



ANNUAL STATEMENT
FOR THE YEAR ENDING DECEMBER 31, 2025
OF THE CONDITION AND AFFAIRS OF THE

CareSource Arkansas Health Plan Co.

(Name)

NAIC Group Code 03683, 03683 NAIC Company Code 17271 Employer's ID Number 84-4476729

Organized under the Laws of Arkansas, State of Domicile or Port of Entry Arkansas

Country of Domicile United States

Licensed as business type: Life, Accident & Health [], Property/Casualty [], Hospital, Medical & Dental Service or Indemnity [], Dental Service Corporation [], Vision Service Corporation [], Health Maintenance Organization [X], Other [], Is HMO, Federally Qualified? Yes [] No [X]

Incorporated/Organized 01/28/2020 Commenced Business 03/25/2022

Statutory Home Office 425 West Capitol Ave., Suite 3000, Little Rock, AR, US 72201

Main Administrative Office 230 N. Main St, Dayton, OH, US 45402, 937-224-3300

Mail Address 230 N. Main St., Dayton, OH, US 45402

Primary Location of Books and Records 230 N. Main St., Dayton, OH, US 45402, 937-224-3300

Internet Web Site Address www.caresource.com

Statutory Statement Contact Rachel Ainslie, 517-331-3100, Rachel.Ainslie@caresource.com, 937-487-1744

OFFICERS

Table with 4 columns: Name, Title, Name, Title. Includes David M. Donohue (President), Edward L. Stubbers (Secretary), Lawrence R. Smart (Chief Financial Officer/Treasurer), and Stephanie A. Williams (Assistant Treasurer).

OTHER OFFICERS

Empty line for other officers.

DIRECTORS OR TRUSTEES

Scott R. Markovich, Lawrence R. Smart, Edward L. Stubbers

State of Ohio, County of Montgomery

ss

The officers of this reporting entity being duly sworn, each depose and say that they are the described officers of said reporting entity, and that on the reporting period stated above, all of the herein described assets were the absolute property of the said reporting entity, free and clear from any liens or claims thereon, except as herein stated, and that this statement, together with related exhibits, schedules and explanations therein contained, annexed or referred to, is a full and true statement of all the assets and liabilities and of the condition and affairs of the said reporting entity as of the reporting period stated above, and of its income and deductions therefrom for the period ended, and have been completed in accordance with the NAIC Annual Statement Instructions and Accounting Practices and Procedures manual except to the extent that: (1) state law may differ; or, (2) that state rules or regulations require differences in reporting not related to accounting practices and procedures, according to the best of their information, knowledge and belief, respectively. Furthermore, the scope of this attestation by the described officers also includes the related corresponding electronic filing with the NAIC, when required, that is an exact copy (except for formatting differences due to electronic filing) of the enclosed statement. The electronic filing may be requested by various regulators in lieu of or in addition to the enclosed statement.

Stephanie A. Williams, Assistant Treasurer

Lawrence R. Smart, Chief Financial Officer/Treasurer

Subscribed and sworn to before me this day of

- a. Is this an original filing? Yes [X] No []
b. If no:
1. State the amendment number
2. Date filed
3. Number of pages attached

ANNUAL STATEMENT FOR THE YEAR 2025 OF THE CareSource Arkansas Health Plan Co.

ASSETS

	Current Year			Prior Year
	1 Assets	2 Nonadmitted Assets	3 Net Admitted Assets (Cols. 1 - 2)	4 Net Admitted Assets
1. Bonds (Schedule D).....	110,785		110,785	124,390
2. Stocks (Schedule D):				
2.1 Preferred stocks	0		0	0
2.2 Common stocks	0		0	0
3. Mortgage loans on real estate (Schedule B):				
3.1 First liens			0	0
3.2 Other than first liens			0	0
4. Real estate (Schedule A):				
4.1 Properties occupied by the company (less \$0 encumbrances).....			0	0
4.2 Properties held for the production of income (less \$0 encumbrances)			0	0
4.3 Properties held for sale (less \$0 encumbrances)			0	0
5. Cash (\$1,584,589 , Schedule E-Part 1), cash equivalents (\$0 , Schedule E-Part 2) and short-term investments (\$0 , Schedule DA).....	1,584,589		1,584,589	1,516,449
6. Contract loans (including \$ premium notes).....			0	0
7. Derivatives (Schedule DB).....	0		0	0
8. Other invested assets (Schedule BA)	0	0	0	0
9. Receivables for securities			0	0
10. Securities lending reinvested collateral assets (Schedule DL).....			0	0
11. Aggregate write-ins for invested assets	0	0	0	0
12. Subtotals, cash and invested assets (Lines 1 to 11)	1,695,374	0	1,695,374	1,640,840
13. Title plants less \$ charged off (for Title insurers only).....			0	0
14. Investment income due and accrued	643		643	316
15. Premiums and considerations:				
15.1 Uncollected premiums and agents' balances in the course of collection	0	0	0	0
15.2 Deferred premiums, agents' balances and installments booked but deferred and not yet due (including \$ earned but unbilled premiums).....			0	0
15.3 Accrued retrospective premiums (\$) and contracts subject to redetermination (\$)			0	0
16. Reinsurance:				
16.1 Amounts recoverable from reinsurers	0		0	0
16.2 Funds held by or deposited with reinsured companies			0	0
16.3 Other amounts receivable under reinsurance contracts			0	0
17. Amounts receivable relating to uninsured plans			0	0
18.1 Current federal and foreign income tax recoverable and interest thereon	8,171		8,171	8,171
18.2 Net deferred tax asset.....			0	0
19. Guaranty funds receivable or on deposit			0	0
20. Electronic data processing equipment and software.....			0	0
21. Furniture and equipment, including health care delivery assets (\$)			0	0
22. Net adjustment in assets and liabilities due to foreign exchange rates			0	0
23. Receivables from parent, subsidiaries and affiliates			0	0
24. Health care (\$) and other amounts receivable.....			0	0
25. Aggregate write-ins for other-than-invested assets	0	0	0	0
26. Total assets excluding Separate Accounts, Segregated Accounts and Protected Cell Accounts (Lines 12 to 25).....	1,704,188	0	1,704,188	1,649,327
27. From Separate Accounts, Segregated Accounts and Protected Cell Accounts.....			0	0
28. Total (Lines 26 and 27)	1,704,188	0	1,704,188	1,649,327
DETAILS OF WRITE-INS				
1101.				
1102.				
1103.				
1198. Summary of remaining write-ins for Line 11 from overflow page	0	0	0	0
1199. Totals (Lines 1101 through 1103 plus 1198) (Line 11 above)	0	0	0	0
2501.				
2502.				
2503.				
2598. Summary of remaining write-ins for Line 25 from overflow page	0	0	0	0
2599. Totals (Lines 2501 through 2503 plus 2598) (Line 25 above)	0	0	0	0

LIABILITIES, CAPITAL AND SURPLUS

	Current Year			Prior Year
	1 Covered	2 Uncovered	3 Total	4 Total
1. Claims unpaid (less \$0 reinsurance ceded)			0	0
2. Accrued medical incentive pool and bonus amounts			0	0
3. Unpaid claims adjustment expenses			0	0
4. Aggregate health policy reserves, including the liability of \$ for medical loss ratio rebate per the Public Health Service Act.....			0	0
5. Aggregate life policy reserves			0	0
6. Property/casualty unearned premium reserves			0	0
7. Aggregate health claim reserves.....			0	0
8. Premiums received in advance			0	0
9. General expenses due or accrued			0	0
10.1 Current federal and foreign income tax payable and interest thereon (including \$ on realized capital gains (losses)).....			0	0
10.2 Net deferred tax liability			0	0
11. Ceded reinsurance premiums payable			0	0
12. Amounts withheld or retained for the account of others			0	0
13. Remittances and items not allocated			0	0
14. Borrowed money (including \$ current) and interest thereon \$ (including \$ current)			0	0
15. Amounts due to parent, subsidiaries and affiliates			0	0
16. Derivatives.....		0	0	0
17. Payable for securities			0	0
18. Payable for securities lending			0	0
19. Funds held under reinsurance treaties (with \$ authorized reinsurers, \$ unauthorized reinsurers and \$ certified reinsurers).....			0	0
20. Reinsurance in unauthorized and certified (\$) companies.....			0	0
21. Net adjustments in assets and liabilities due to foreign exchange rates			0	0
22. Liability for amounts held under uninsured plans			0	0
23. Aggregate write-ins for other liabilities (including \$ current)	0	0	0	0
24. Total liabilities (Lines 1 to 23).....	0	0	0	0
25. Aggregate write-ins for special surplus funds	XXX	XXX	0	0
26. Common capital stock	XXX	XXX		0
27. Preferred capital stock	XXX	XXX		0
28. Gross paid in and contributed surplus	XXX	XXX	760,000	760,000
29. Surplus notes	XXX	XXX	750,000	750,000
30. Aggregate write-ins for other-than-special surplus funds	XXX	XXX	0	0
31. Unassigned funds (surplus)	XXX	XXX	194,188	139,327
32. Less treasury stock, at cost:				
32.1 shares common (value included in Line 26 \$)	XXX	XXX		0
32.2 shares preferred (value included in Line 27 \$)	XXX	XXX		0
33. Total capital and surplus (Lines 25 to 31 minus Line 32)	XXX	XXX	1,704,188	1,649,327
34. Total liabilities, capital and surplus (Lines 24 and 33)	XXX	XXX	1,704,188	1,649,327
DETAILS OF WRITE-INS				
2301.				
2302.				
2303.				
2398. Summary of remaining write-ins for Line 23 from overflow page	0	0	0	0
2399. Totals (Lines 2301 through 2303 plus 2398) (Line 23 above)	0	0	0	0
2501.	XXX	XXX		0
2502.	XXX	XXX		
2503.	XXX	XXX		
2598. Summary of remaining write-ins for Line 25 from overflow page	XXX	XXX	0	0
2599. Totals (Lines 2501 through 2503 plus 2598) (Line 25 above)	XXX	XXX	0	0
3001.	XXX	XXX		
3002.	XXX	XXX		
3003.	XXX	XXX		
3098. Summary of remaining write-ins for Line 30 from overflow page	XXX	XXX	0	0
3099. Totals (Lines 3001 through 3003 plus 3098) (Line 30 above)	XXX	XXX	0	0

STATEMENT OF REVENUE AND EXPENSES

	Current Year		Prior Year
	1 Uncovered	2 Total	3 Total
1. Member months.....	XXX	0	0
2. Net premium income (including \$0 non-health premium income).....	XXX	0	0
3. Change in unearned premium reserves and reserve for rate credits	XXX		0
4. Fee-for-service (net of \$ medical expenses)	XXX		0
5. Risk revenue	XXX		0
6. Aggregate write-ins for other health care related revenues	XXX	0	0
7. Aggregate write-ins for other non-health revenues	XXX	0	0
8. Total revenues (Lines 2 to 7)	XXX	0	0
Hospital and Medical:			
9. Hospital/medical benefits			0
10. Other professional services			0
11. Outside referrals			0
12. Emergency room and out-of-area			0
13. Prescription drugs			0
14. Aggregate write-ins for other hospital and medical	0	0	0
15. Incentive pool, withhold adjustments and bonus amounts.....			0
16. Subtotal (Lines 9 to 15)	0	0	0
Less:			
17. Net reinsurance recoveries			0
18. Total hospital and medical (Lines 16 minus 17)	0	0	0
19. Non-health claims (net).....			0
20. Claims adjustment expenses, including \$0 cost containment expenses.....		0	0
21. General administrative expenses.....		615	450
22. Increase in reserves for life and accident and health contracts (including \$ increase in reserves for life only).....		0	0
23. Total underwriting deductions (Lines 18 through 22)	0	615	450
24. Net underwriting gain or (loss) (Lines 8 minus 23)	XXX	(615)	(450)
25. Net investment income earned (Exhibit of Net Investment Income, Line 17).....		55,476	72,229
26. Net realized capital gains (losses) less capital gains tax of \$			0
27. Net investment gains (losses) (Lines 25 plus 26)	0	55,476	72,229
28. Net gain or (loss) from agents' or premium balances charged off [(amount recovered \$) (amount charged off \$)]		0	0
29. Aggregate write-ins for other income or expenses	0	0	0
30. Net income or (loss) after capital gains tax and before all other federal income taxes (Lines 24 plus 27 plus 28 plus 29).....	XXX	54,861	71,779
31. Federal and foreign income taxes incurred	XXX		29
32. Net income (loss) (Lines 30 minus 31)	XXX	54,861	71,750
DETAILS OF WRITE-INS			
0601.	XXX		
0602.	XXX		
0603.	XXX		
0698. Summary of remaining write-ins for Line 6 from overflow page	XXX	0	0
0699. Totals (Lines 0601 through 0603 plus 0698) (Line 6 above)	XXX	0	0
0701.	XXX		
0702.	XXX		
0703.	XXX		
0798. Summary of remaining write-ins for Line 7 from overflow page	XXX	0	0
0799. Totals (Lines 0701 through 0703 plus 0798) (Line 7 above)	XXX	0	0
1401.			
1402.			
1403.			
1498. Summary of remaining write-ins for Line 14 from overflow page	0	0	0
1499. Totals (Lines 1401 through 1403 plus 1498) (Line 14 above)	0	0	0
2901.			
2902.			
2903.			
2998. Summary of remaining write-ins for Line 29 from overflow page	0	0	0
2999. Totals (Lines 2901 through 2903 plus 2998) (Line 29 above)	0	0	0

STATEMENT OF REVENUE AND EXPENSES (Continued)

	1 Current Year	2 Prior Year
CAPITAL & SURPLUS ACCOUNT		
33. Capital and surplus prior reporting year	1,649,327	1,577,577
34. Net income or (loss) from Line 32	54,861	71,750
35. Change in valuation basis of aggregate policy and claim reserves		0
36. Change in net unrealized capital gains (losses) less capital gains tax of \$		0
37. Change in net unrealized foreign exchange capital gain or (loss)		0
38. Change in net deferred income tax	(18,348)	2,478
39. Change in nonadmitted assets	18,348	(2,478)
40. Change in unauthorized and certified reinsurance	0	0
41. Change in treasury stock	0	0
42. Change in surplus notes	0	0
43. Cumulative effect of changes in accounting principles		0
44. Capital Changes:		
44.1 Paid in	0	0
44.2 Transferred from surplus (stock dividend)		0
44.3 Transferred to surplus		0
45. Surplus adjustments:		
45.1 Paid in	0	0
45.2 Transferred to capital (stock dividend)	0	0
45.3 Transferred from capital		0
46. Dividends to stockholders		0
47. Aggregate write-ins for gains or (losses) in surplus	0	0
48. Net change in capital and surplus (Lines 34 to 47)	54,861	71,750
49. Capital and surplus end of reporting year (Line 33 plus 48)	1,704,188	1,649,327
DETAILS OF WRITE-INS		
4701.		
4702.		
4703.		
4798. Summary of remaining write-ins for Line 47 from overflow page	0	0
4799. Totals (Lines 4701 through 4703 plus 4798) (Line 47 above)	0	0

CASH FLOW

	1 Current Year	2 Prior Year
Cash from Operations		
1. Premiums collected net of reinsurance	0	0
2. Net investment income	54,864	70,786
3. Miscellaneous income	0	0
4. Total (Lines 1 through 3)	54,864	70,786
5. Benefit and loss related payments	0	0
6. Net transfers to Separate Accounts, Segregated Accounts and Protected Cell Accounts	0	0
7. Commissions, expenses paid and aggregate write-ins for deductions	615	450
8. Dividends paid to policyholders	0	0
9. Federal and foreign income taxes paid (recovered) net of \$ tax on capital gains (losses)	0	0
10. Total (Lines 5 through 9)	615	450
11. Net cash from operations (Line 4 minus Line 10)	54,249	70,336
Cash from Investments		
12. Proceeds from investments sold, matured or repaid:		
12.1 Bonds	125,000	0
12.2 Stocks	0	0
12.3 Mortgage loans	0	0
12.4 Real estate	0	0
12.5 Other invested assets	0	0
12.6 Net gains or (losses) on cash, cash equivalents and short-term investments	0	0
12.7 Miscellaneous proceeds	0	0
12.8 Total investment proceeds (Lines 12.1 to 12.7)	125,000	0
13. Cost of investments acquired (long-term only exclude cash equivalents and short-term investments):		
13.1 Bonds	111,109	0
13.2 Stocks	0	0
13.3 Mortgage loans	0	0
13.4 Real estate	0	0
13.5 Other invested assets	0	0
13.6 Miscellaneous applications	0	0
13.7 Total investments acquired (Lines 13.1 to 13.6)	111,109	0
14. Net increase/(decrease) in contract loans and premium notes	0	0
15. Net cash from investments (Line 12.8 minus Line 13.7 minus Line 14)	13,891	0
Cash from Financing and Miscellaneous Sources		
16. Cash provided (applied):		
16.1 Surplus notes, capital notes	0	0
16.2 Capital and paid in surplus, less treasury stock	0	0
16.3 Borrowed funds	0	0
16.4 Net deposits on deposit-type contracts and other insurance liabilities	0	0
16.5 Dividends to stockholders	0	0
16.6 Other cash provided (applied)	0	0
17. Net cash from financing and miscellaneous sources (Lines 16.1 to 16.4 minus Line 16.5 plus Line 16.6)	0	0
RECONCILIATION OF CASH, CASH EQUIVALENTS AND SHORT-TERM INVESTMENTS		
18. Net change in cash, cash equivalents and short-term investments (Line 11, plus Lines 15 and 17)	68,140	70,336
19. Cash, cash equivalents and short-term investments:		
19.1 Beginning of year	1,516,449	1,446,112
19.2 End of year (Line 18 plus Line 19.1)	1,584,589	1,516,449

ANNUAL STATEMENT FOR THE YEAR 2025 OF THE CareSource Arkansas Health Plan Co.

ANALYSIS OF OPERATIONS BY LINES OF BUSINESS

	1 Total	Comprehensive (Hospital & Medical)		4 Medicare Supplement	5 Vision Only	6 Dental Only	7 Federal Employees Health Benefit Plan	8 Title XVIII Medicare	9 Title XIX Medicaid	10 Credit A&H	11 Disability Income	12 Long-Term Care	13 Other Health	14 Other Non-Health
		2 Individual	3 Group											
1. Net premium income	0	0	0	0	0	0	0	0	0	0	0	0	0	0
2. Change in unearned premium reserves and reserve for rate credit	0													
3. Fee-for-service (net of \$ medical expenses)	0													XXX
4. Risk revenue	0													XXX
5. Aggregate write-ins for other health care related revenues	0	0	0	0	0	0	0	0	0	0	0	0	0	XXX
6. Aggregate write-ins for other non-health care related revenues	0	XXX	XXX	XXX	XXX	XXX	XXX	XXX	XXX	XXX	XXX	XXX	XXX	0
7. Total revenues (Lines 1 to 6)	0	0	0	0	0	0	0	0	0	0	0	0	0	0
8. Hospital/medical benefits	0													XXX
9. Other professional services	0													XXX
10. Outside referrals	0													XXX
11. Emergency room and out-of-area	0													XXX
12. Prescription drugs	0													XXX
13. Aggregate write-ins for other hospital and medical	0	0	0	0	0	0	0	0	0	0	0	0	0	XXX
14. Incentive pool, withhold adjustments and bonus amounts	0													XXX
15. Subtotal (Lines 8 to 14)	0	0	0	0	0	0	0	0	0	0	0	0	0	XXX
16. Net reinsurance recoveries	0													XXX
17. Total hospital and medical (Lines 15 minus 16)	0	0	0	0	0	0	0	0	0	0	0	0	0	XXX
18. Non-health claims (net)	0	XXX	XXX	XXX	XXX	XXX	XXX	XXX	XXX	XXX	XXX	XXX	XXX	0
19. Claims adjustment expenses including \$ cost containment expenses	0													
20. General administrative expenses	615												615	
21. Increase in reserves for accident and health contracts	0													XXX
22. Increase in reserves for life contracts	0	XXX	XXX	XXX	XXX	XXX	XXX	XXX	XXX	XXX	XXX	XXX	XXX	
23. Total underwriting deductions (Lines 17 to 22)	615	0	0	0	0	0	0	0	0	0	0	0	615	0
24. Net underwriting gain or (loss) (Line 7 minus Line 23)	(615)	0	0	0	0	0	0	0	0	0	0	0	(615)	0
DETAILS OF WRITE-INS														
0501.														XXX
0502.														XXX
0503.														XXX
0598. Summary of remaining write-ins for Line 5 from overflow page	0	0	0	0	0	0	0	0	0	0	0	0	0	XXX
0599. Totals (Lines 0501 through 0503 plus 0598) (Line 5 above)	0	0	0	0	0	0	0	0	0	0	0	0	0	XXX
0601.		XXX	XXX	XXX	XXX	XXX	XXX	XXX	XXX	XXX	XXX	XXX	XXX	
0602.		XXX	XXX	XXX	XXX	XXX	XXX	XXX	XXX	XXX	XXX	XXX	XXX	
0603.		XXX	XXX	XXX	XXX	XXX	XXX	XXX	XXX	XXX	XXX	XXX	XXX	
0698. Summary of remaining write-ins for Line 6 from overflow page	0	XXX	XXX	XXX	XXX	XXX	XXX	XXX	XXX	XXX	XXX	XXX	XXX	0
0699. Totals (Lines 0601 through 0603 plus 0698) (Line 6 above)	0	XXX	XXX	XXX	XXX	XXX	XXX	XXX	XXX	XXX	XXX	XXX	XXX	0
1301.														XXX
1302.														XXX
1303.														XXX
1398. Summary of remaining write-ins for Line 13 from overflow page	0	0	0	0	0	0	0	0	0	0	0	0	0	XXX
1399. Totals (Lines 1301 through 1303 plus 1398) (Line 13 above)	0	0	0	0	0	0	0	0	0	0	0	0	0	XXX

Part 1 - Premiums

NONE

Part 2 - Claims Incurred During the Year

NONE

Part 2A - Claims Liability

NONE

Part 2B - Analysis of Claims

NONE

Pt 2C - Sn A - Paid Claims - Comp

NONE

Pt 2C - Sn A - Paid Claims - MS

NONE

Pt 2C - Sn A - Paid Claims - DO

NONE

Pt 2C - Sn A - Paid Claims - VO

NONE

Pt 2C - Sn A - Paid Claims - FE

NONE

Pt 2C - Sn A - Paid Claims - XV

NONE

Pt 2C - Sn A - Paid Claims - XI

NONE

Pt 2C - Sn A - Paid Claims - OT

NONE

Pt 2C - Sn A - Paid Claims - GT

NONE

Pt 2C - Sn B - Incurred Claims - Comp

NONE

Pt 2C - Sn B - Incurred Claims - MS

NONE

Pt 2C - Sn B - Incurred Claims - DO

NONE

Pt 2C - Sn B - Incurred Claims - VO

NONE

Pt 2C - Sn B - Incurred Claims - FE

NONE

Pt 2C - Sn B - Incurred Claims - XV

NONE

Pt 2C - Sn B - Incurred Claims - XI

NONE

Pt 2C - Sn B - Incurred Claims - OT

NONE

Pt 2C - Sn B - Incurred Claims - GT

NONE

Part 2C - Sn C - Claims Expense Ratio Co

NONE

Part 2C - Sn C - Claims Expense Ratio MS

NONE

Part 2C - Sn C - Claims Expense Ratio DO

NONE

Part 2C - Sn C - Claims Expense Ratio VO

NONE

Part 2C - Sn C - Claims Expense Ratio FE

NONE

Part 2C - Sn C - Claims Expense Ratio XV

NONE

Part 2C - Sn C - Claims Expense Ratio XI

NONE

Part 2C - Sn C - Claims Expense Ratio OT

NONE

Part 2C - Sn C - Claims Expense Ratio GT

NONE

Part 2D - Aggregate Reserve for A&H Contracts Only

NONE

UNDERWRITING AND INVESTMENT EXHIBIT
PART 3 - ANALYSIS OF EXPENSES

	Claim Adjustment Expenses		3 General Administrative Expenses	4 Investment Expenses	5 Total
	1 Cost Containment Expenses	2 Other Claim Adjustment Expenses			
1. Rent (\$for occupancy of own building)					0
2. Salaries, wages and other benefits					0
3. Commissions (less \$ceded plus \$assumed)					0
4. Legal fees and expenses					0
5. Certifications and accreditation fees					0
6. Auditing, actuarial and other consulting services					0
7. Traveling expenses					0
8. Marketing and advertising					0
9. Postage, express and telephone					0
10. Printing and office supplies					0
11. Occupancy, depreciation and amortization					0
12. Equipment					0
13. Cost or depreciation of EDP equipment and software					0
14. Outsourced services including EDP, claims, and other services					0
15. Boards, bureaus and association fees					0
16. Insurance, except on real estate					0
17. Collection and bank service charges					0
18. Group service and administration fees					0
19. Reimbursements by uninsured plans					0
20. Reimbursements from fiscal intermediaries					0
21. Real estate expenses					0
22. Real estate taxes					0
23. Taxes, licenses and fees:					
23.1 State and local insurance taxes					0
23.2 State premium taxes					0
23.3 Regulatory authority licenses and fees			615		615
23.4 Payroll taxes					0
23.5 Other (excluding federal income and real estate taxes)					0
24. Investment expenses not included elsewhere				5,042	5,042
25. Aggregate write-ins for expenses	0	0	0	0	0
26. Total expenses incurred (Lines 1 to 25)	0	0	615	5,042	5,657 (a)
27. Less expenses unpaid December 31, current year					0
28. Add expenses unpaid December 31, prior year	0	0	0	0	0
29. Amounts receivable relating to uninsured plans, prior year	0	0	0	0	0
30. Amounts receivable relating to uninsured plans, current year					0
31. Total expenses paid (Lines 26 minus 27 plus 28 minus 29 plus 30)	0	0	615	5,042	5,657
DETAILS OF WRITE-INS					
2501.					0
2502.					0
2503.					0
2598. Summary of remaining write-ins for Line 25 from overflow page	0	0	0	0	0
2599. Totals (Line 2501 through 2503 plus 2598) (Line 25 above)	0	0	0	0	0

(a) Includes management fees of \$to affiliates and \$to non-affiliates.

EXHIBIT OF NET INVESTMENT INCOME

	1 Collected During Year	2 Earned During Year
1. U.S. Government bonds	(a) 4,356	4,683
1.1 Bonds exempt from U.S. tax	(a)	
1.2 Other bonds (unaffiliated)	(a)	
1.3 Bonds of affiliates	(a)	
2.1 Preferred stocks (unaffiliated)	(b) 0	
2.11 Preferred stocks of affiliates	(b) 0	
2.2 Common stocks (unaffiliated)	0	
2.21 Common stocks of affiliates	0	
3. Mortgage loans	(c)	
4. Real estate	(d)	0
5. Contract loans		
6. Cash, cash equivalents and short-term investments	(e) 55,835	55,835
7. Derivative instruments	(f)	
8. Other invested assets		
9. Aggregate write-ins for investment income	0	0
10. Total gross investment income	60,191	60,518
11. Investment expenses		(g) 5,042
12. Investment taxes, licenses and fees, excluding federal income taxes		(g)
13. Interest expense		(h)
14. Depreciation on real estate and other invested assets		(i)
15. Aggregate write-ins for deductions from investment income		0
16. Total deductions (Lines 11 through 15)		5,042
17. Net investment income (Line 10 minus Line 16)		55,476
DETAILS OF WRITE-INS		
0901.		
0902.		
0903.		
0998. Summary of remaining write-ins for Line 9 from overflow page	0	0
0999. Totals (Lines 0901 through 0903 plus 0998) (Line 9 above)	0	0
1501.		
1502.		
1503.		
1598. Summary of remaining write-ins for Line 15 from overflow page		0
1599. Totals (Lines 1501 through 1503 plus 1598) (Line 15 above)		0

- (a) Includes \$ 610 accrual of discount less \$ 324 amortization of premium and less \$ 202 paid for accrued interest on purchases.
- (b) Includes \$ accrual of discount less \$ amortization of premium and less \$ 0 paid for accrued dividends on purchases.
- (c) Includes \$ 0 accrual of discount less \$ 0 amortization of premium and less \$ paid for accrued interest on purchases.
- (d) Includes \$ for company's occupancy of its own buildings; and excludes \$ interest on encumbrances.
- (e) Includes \$ 0 accrual of discount less \$ 0 amortization of premium and less \$ paid for accrued interest on purchases.
- (f) Includes \$ accrual of discount less \$ amortization of premium.
- (g) Includes \$ investment expenses and \$ investment taxes, licenses and fees, excluding federal income taxes, attributable to segregated and Separate Accounts.
- (h) Includes \$ interest on surplus notes and \$ interest on capital notes.
- (i) Includes \$ depreciation on real estate and \$ depreciation on other invested assets.

EXHIBIT OF CAPITAL GAINS (LOSSES)

	1 Realized Gain (Loss) On Sales or Maturity	2 Other Realized Adjustments	3 Total Realized Capital Gain (Loss) (Columns 1 + 2)	4 Change in Unrealized Capital Gain (Loss)	5 Change in Unrealized Foreign Exchange Capital Gain (Loss)
1. U.S. Government bonds			0		
1.1 Bonds exempt from U.S. tax			0		
1.2 Other bonds (unaffiliated)			0		
1.3 Bonds of affiliates			0		
2.1 Preferred stocks (unaffiliated)	0	0	0	0	0
2.11 Preferred stocks of affiliates	0	0	0	0	0
2.2 Common stocks (unaffiliated)	0	0	0	0	0
2.21 Common stocks of affiliates	0	0	0	0	0
3. Mortgage loans	0	0	0	0	0
4. Real estate	0	0	0	0	0
5. Contract loans			0		
6. Cash, cash equivalents and short-term investments			0	0	0
7. Derivative instruments			0		
8. Other invested assets	0	0	0	0	0
9. Aggregate write-ins for capital gains (losses)	0	0	0	0	0
10. Total capital gains (losses)	0	0	0	0	0
DETAILS OF WRITE-INS					
0901.					
0902.					
0903.					
0998. Summary of remaining write-ins for Line 9 from overflow page	0	0	0	0	0
0999. Totals (Lines 0901 through 0903 plus 0998) (Line 9 above)	0	0	0	0	0

NONE

EXHIBIT OF NONADMITTED ASSETS

	1	2	3
	Current Year Total Nonadmitted Assets	Prior Year Total Nonadmitted Assets	Change in Total Nonadmitted Assets (Col. 2 - Col. 1)
1. Bonds (Schedule D).....	.0	.0	.0
2. Stocks (Schedule D):			
2.1 Preferred stocks0	.0	.0
2.2 Common stocks0	.0	.0
3. Mortgage loans on real estate (Schedule B):			
3.1 First liens0	.0	.0
3.2 Other than first liens0	.0	.0
4. Real estate (Schedule A):			
4.1 Properties occupied by the company0	.0	.0
4.2 Properties held for the production of income.....	.0	.0	.0
4.3 Properties held for sale0	.0	.0
5. Cash (Schedule E-Part 1), cash equivalents (Schedule E-Part 2) and short-term investments (Schedule DA).....	.0	.0	.0
6. Contract loans0	.0	.0
7. Derivatives (Schedule DB).....	.0	.0	.0
8. Other invested assets (Schedule BA)0	.0	.0
9. Receivables for securities0	.0	.0
10. Securities lending reinvested collateral assets (Schedule DL).....	.0	.0	.0
11. Aggregate write-ins for invested assets0	.0	.0
12. Subtotals, cash and invested assets (Lines 1 to 11)0	.0	.0
13. Title plants (for Title insurers only).....	.0	.0	.0
14. Investment income due and accrued0	.0	.0
15. Premiums and considerations:			
15.1 Uncollected premiums and agents' balances in the course of collection.....	.0	.0	.0
15.2 Deferred premiums, agents' balances and installments booked but deferred and not yet due.....	.0	.0	.0
15.3 Accrued retrospective premiums and contracts subject to redetermination0	.0	.0
16. Reinsurance:			
16.1 Amounts recoverable from reinsurers0	.0	.0
16.2 Funds held by or deposited with reinsured companies0	.0	.0
16.3 Other amounts receivable under reinsurance contracts0	.0	.0
17. Amounts receivable relating to uninsured plans0	.0	.0
18.1 Current federal and foreign income tax recoverable and interest thereon0	.0	.0
18.2 Net deferred tax asset.....	.0	18,348	18,348
19. Guaranty funds receivable or on deposit0	.0	.0
20. Electronic data processing equipment and software.....	.0	.0	.0
21. Furniture and equipment, including health care delivery assets0	.0	.0
22. Net adjustment in assets and liabilities due to foreign exchange rates0	.0	.0
23. Receivables from parent, subsidiaries and affiliates0	.0	.0
24. Health care and other amounts receivable.....	.0	.0	.0
25. Aggregate write-ins for other-than-invested assets0	.0	.0
26. Total assets excluding Separate Accounts, Segregated Accounts and Protected Cell Accounts (Lines 12 to 25).....	.0	18,348	18,348
27. From Separate Accounts, Segregated Accounts and Protected Cell Accounts.....	0	0	0
28. Total (Lines 26 and 27)	0	18,348	18,348
DETAILS OF WRITE-INS			
1101.			
1102.			
1103.			
1198. Summary of remaining write-ins for Line 11 from overflow page0	.0	.0
1199. Totals (Lines 1101 through 1103 plus 1198) (Line 11 above)	0	0	0
2501.			
2502.			
2503.			
2598. Summary of remaining write-ins for Line 25 from overflow page0	.0	.0
2599. Totals (Lines 2501 through 2503 plus 2598) (Line 25 above)	0	0	0

EXHIBIT 1 - ENROLLMENT BY PRODUCT TYPE FOR HEALTH BUSINESS ONLY

Source of Enrollment	Total Members at End of					6 Current Year Member Months
	1 Prior Year	2 First Quarter	3 Second Quarter	4 Third Quarter	5 Current Year	
1. Health Maintenance Organizations.....	.0					
2. Provider Service Organizations.....	.0					
3. Preferred Provider Organizations.....	.0					
4. Point of Service.....	.0					
5. Indemnity Only.....	.0					
6. Aggregate write-ins for other lines of business.....	.0	.0	.0	.0	.0	.0
7. Total	0	0	0	0	0	0
DETAILS OF WRITE-INS						
0601.						
0602.						
0603.						
0698. Summary of remaining write-ins for Line 6 from overflow page0	.0	.0	.0	.0	.0
0699. Totals (Lines 0601 through 0603 plus 0698) (Line 6 above)	0	0	0	0	0	0

NONE

ANNUAL STATEMENT FOR THE YEAR 2025 OF THE CareSource Arkansas Health Plan Co.

NOTES TO FINANCIAL STATEMENTS

Note 1 - Summary of Significant Accounting Policies and Going Concern

A. Accounting Practices
The financial statements of CareSource Arkansas Health Plan Co. (the "Company"), domiciled in the State of Arkansas, are presented on the basis of accounting practices prescribed or permitted by the Arkansas Insurance Department (AID).

The Department recognizes only statutory accounting practices prescribed or permitted by the State of Arkansas for determining and reporting the financial condition, results of operations, and cash flow of an insurance company for determining its solvency under Arkansas insurance law. The National Association of Insurance Commissioners' ("NAIC") Accounting Practices and Procedures manual, ("NAIC AP&P") has been adopted as a component of prescribed or permitted practices by the State of Arkansas.

A reconciliation of the Company's net income and capital and surplus between NAIC AP&P and practices prescribed and permitted by the State of Arkansas is shown below:

	SSAP #	F/S Page	F/S Line #	2025	2024
NET INCOME					
(1) Company state basis (Page 4, Line 32, Columns 2 & 3)	XXX	XXX	XXX	\$ 54,861	\$ 71,750
(2) State Prescribed Practices that are an increase/(decrease) from NAIC SAP:					
(3) State Permitted Practices that are an increase/(decrease) from NAIC SAP:					
(4) NAIC SAP (1-2-3=4)	XXX	XXX	XXX	\$ 54,861	\$ 71,750
SURPLUS					
(5) Company state basis (Page 3, Line 33, Columns 3 & 4)	XXX	XXX	XXX	\$ 1,704,188	\$ 1,649,327
(6) State Prescribed Practices that are an increase/(decrease) from NAIC SAP:					
(7) State Permitted Practices that are an increase/(decrease) from NAIC SAP:					
(8) NAIC SAP (5-6-7=8)	XXX	XXX	XXX	\$ 1,704,188	\$ 1,649,327

B. Use of Estimates in the Preparation of the Financial Statements

None

C. Accounting Policy

- (1) Not Applicable
- (2) Bonds not backed by other loans are principally stated at amortized cost using the interest method. Realized capital gains and losses are determined using the first in, first out method.
- (3) Not Applicable
- (4) Not Applicable
- (5) Not Applicable
- (6) Not Applicable
- (7) Not Applicable
- (8) Not Applicable
- (9) Not Applicable
- (10) Not Applicable
- (11) Not Applicable
- (12) Not Applicable
- (13) Not Applicable

D. Going Concern

Management has evaluated the company's abilities to continue as a going concern. There is no substantial doubt about its ability to continue as a going concern.

Note 2 - Accounting Changes and Corrections of Errors

Not Applicable

Note 3 - Business Combinations and Goodwill

Not Applicable

Note 4 - Discontinued Operations

Not Applicable

Note 5 - Investments

- A. Mortgage Loans, including Mezzanine Real Estate Loans
Not Applicable
- B. Debt Restructuring
Not Applicable
- C. Reverse Mortgages
Not Applicable
- D. Asset-Backed Securities
Not Applicable
- E. Dollar Repurchase Agreements and/or Securities Lending Transactions
Not Applicable
- F. Repurchase Agreements Transactions Accounted for as Secured Borrowing
Not Applicable
- G. Reverse Repurchase Agreements Transactions Accounted for as Secured Borrowing
Not Applicable
- H. Repurchase Agreements Transactions Accounted for as a Sale
Not Applicable
- I. Reverse Repurchase Agreements Transactions Accounted for as a Sale
Not Applicable
- J. Real Estate
Not Applicable
- K. Investments in Tax Credit Structures (tax credit investments)
Not Applicable
- L. Restricted Assets

(1) Restricted Assets (Including Pledged)

As of December 31, 2025, the Company has \$110,785 on deposit with the State of Arkansas, in accordance with the State's minimum surplus and collateral requirements. The funds are held in the form of a bond and represent 6.5% of the Company's total assets.

	1	2	3	4	5	6	7	8	9	10
Restricted Asset Category	Total Gross (Admitted & Nonadmitted) Restricted from Current Year	Total Gross (Admitted & Nonadmitted) Restricted from Prior Year	Increase/ (Decrease) (1 minus 2)	Total Current Year Nonadmitted Restricted	Total Current Year Admitted Restricted (1 minus 4)	Gross (Admitted & Nonadmitted) Restricted to Total Assets (a)	Admitted Restricted to Total Admitted Assets (b)	Amount Reported in General Interrogatories	Difference from Note and GI	GI Ref
a. Subject to contractual obligation for which liability is not shown	\$	\$ 0	\$ 0	\$	\$ 0	0.0 %	0.0 %	XXX	XXX	XXX

ANNUAL STATEMENT FOR THE YEAR 2025 OF THE CareSource Arkansas Health Plan Co.

Restricted Asset Category	1 Total Gross (Admitted & Nonadmitted) Restricted from Current Year	2 Total Gross (Admitted & Nonadmitted) Restricted from Prior Year	3 Increase/ (Decrease) (1 minus 2)	4 Total Current Year Nonadmitted Restricted	5 Total Current Year Admitted Restricted (1 minus 4)	6 Gross (Admitted & Nonadmitted) Restricted to Total Assets (a)	7 Admitted Restricted to Total Admitted Assets (b)	8 Amount Reported in General Interrogatories	9 Difference from Note and GI	10 GI Ref
b. Collateral held under security lending agreements		0	0		0	0.0	0.0	0	0	25.04 + 25.05
c. Subject to repurchase agreements		0	0		0	0.0	0.0	0	0	26.21
d. Subject to reverse repurchase agreements		0	0		0	0.0	0.0	0	0	26.22
e. Subject to dollar repurchase agreements		0	0		0	0.0	0.0	0	0	26.23
f. Subject to dollar reverse repurchase agreements		0	0		0	0.0	0.0	0	0	26.24
g. Placed under option contracts		0	0		0	0.0	0.0	0	0	26.25
h. Letter stock or securities restricted as to sale – excluding FHLB capital stock		0	0		0	0.0	0.0	0	0	26.26
i. FHLB capital stock		0	0		0	0.0	0.0	0	0	26.27
j. On deposit with states	110,785	124,391	(13,606)		110,785	6.5	6.5	110,785	0	26.28
k. On deposit with other regulatory bodies		0	0		0	0.0	0.0	0	0	26.29
l. Pledged as collateral to FHLB (including assets backing funding agreements)		0	0		0	0.0	0.0	0	0	26.31
m. Pledged as collateral not captured in other categories	0	0	0		0	0.0	0.0	0	0	26.30
n. Other restricted assets	0	0	0		0	0.0	0.0	0	0	26.32
o. Collateral assets received and on balance sheet			0		0	0.0	0.0	XXX	XXX	XXX
p. Assets held under modco reinsurance agreements			0		0	0.0	0.0	XXX	XXX	XXX
q. Assets held under funds withheld reinsurance agreements			0		0	0.0	0.0	XXX	XXX	XXX
r. Total restricted assets (Sum of a through q)	\$ 110,785	\$ 124,391	\$ (13,606)	\$ 0	\$ 110,785	6.5 %	6.5 %	XXX	XXX	XXX

(a) Column 1 divided by Asset Page, Column 1, Line 28

(b) Column 5 divided by Asset Page, Column 3, Line 28

Reporting entities shall explain the differences between amounts reported in Note 5L(1) and the general interrogatories. This shall include all instances in which an amount is reported in column 9 above.

GI Reference	Difference between Note and GI (Per Column 9 above)	Explanation
25.04 + 25.05	0	
26.21	0	
26.22	0	
26.23	0	
26.24	0	
26.25	0	
26.26	0	
26.27	0	
26.28	0	
26.29	0	
26.31	0	
26.30	0	
26.32	0	

M. Working Capital Finance Investments

Not Applicable

N. Offsetting and Netting of Assets and Liabilities

Not Applicable

O. 5GI Securities

Not Applicable

P. Short Sales

Not Applicable

Q. Prepayment Penalty and Acceleration Fees

Not Applicable

R. Reporting Entity's Share of Cash Pool by Asset type.

Not Applicable

S. Aggregate Collateral Loans by Qualifying Investment Collateral

Not Applicable

Note 6 - Joint Ventures, Partnerships and Limited Liability Companies

Not Applicable

Note 7 - Investment Income

A. Due and Accrued Income that was Excluded from Surplus on the following basis

The Company non-admits any investment income that is more than 90 days past due, except for investment income related to mortgage loans that is more than 180 days past due.

B. Total Amount Excluded

The Company has not excluded any investment income.

C. Gross, nonadmitted and admitted amounts for interest income due and accrued.

Interest Income Due and Accrued	Amount
1. Gross	\$ 643
2. Nonadmitted	\$
3. Admitted	\$ 643

D. Aggregate deferred interest.

Not Applicable

E. Cumulative amounts of paid-in-kind (PIK) interest included in the current principal balance.

Not Applicable

Note 8 - Derivative Instruments

Not Applicable

Note 9 - Income Taxes

A. The components of the net deferred tax asset/(liability) at December 31 are as follows:

ANNUAL STATEMENT FOR THE YEAR 2025 OF THE CareSource Arkansas Health Plan Co.

1.

12/31/2025			
(1)	(2)	(3)	
Ordinary	Capital	(Col 1+2) Total	
(a) Gross Deferred Tax Assets	\$ 22,970	\$	\$ 22,970
(b) Statutory Valuation Allowance Adjustments	\$ 22,970	\$	\$ 22,970
(c) Adjusted Gross Deferred Tax Assets (1a - 1b)	\$ 0	\$ 0	\$ 0
(d) Deferred Tax Assets Nonadmitted	\$	\$	\$ 0
(e) Subtotal Net Admitted Deferred Tax Asset (1c - 1d)	\$ 0	\$ 0	\$ 0
(f) Deferred Tax Liabilities	\$	\$	\$ 0
(g) Net Admitted Deferred Tax Asset/(Net Deferred Tax Liability) (1e - 1f)	\$ 0	\$ 0	\$ 0

12/31/2024			
(4)	(5)	(6)	
Ordinary	Capital	(Col 4+5) Total	
(a) Gross Deferred Tax Assets	\$ 18,348	\$	\$ 18,348
(b) Statutory Valuation Allowance Adjustments	\$ 0	\$ 0	\$ 0
(c) Adjusted Gross Deferred Tax Assets (1a - 1b)	\$ 18,348	\$ 0	\$ 18,348
(d) Deferred Tax Assets Nonadmitted	\$ 18,348	\$ 0	\$ 18,348
(e) Subtotal Net Admitted Deferred Tax Asset (1c - 1d)	\$ 0	\$ 0	\$ 0
(f) Deferred Tax Liabilities	\$ 0	\$ 0	\$ 0
(g) Net Admitted Deferred Tax Asset/(Net Deferred Tax Liability) (1e - 1f)	\$ 0	\$ 0	\$ 0

Change			
(7)	(8)	(9)	
(Col 1-4) Ordinary	(Col 2-5) Capital	(Col 7+8) Total	
(a) Gross Deferred Tax Assets	\$ 4,622	\$ 0	\$ 4,622
(b) Statutory Valuation Allowance Adjustments	\$ 22,970	\$ 0	\$ 22,970
(c) Adjusted Gross Deferred Tax Assets (1a - 1b)	\$ (18,348)	\$ 0	\$ (18,348)
(d) Deferred Tax Assets Nonadmitted	\$ (18,348)	\$ 0	\$ (18,348)
(e) Subtotal Net Admitted Deferred Tax Asset (1c - 1d)	\$ 0	\$ 0	\$ 0
(f) Deferred Tax Liabilities	\$ 0	\$ 0	\$ 0
(g) Net Admitted Deferred Tax Asset/(Net Deferred Tax Liability) (1e - 1f)	\$ 0	\$ 0	\$ 0

2. Not Applicable

3.

	2025	2024
(a) Ratio Percentage Used To Determine Recovery Period And Threshold Limitation Amount.	56,448.758	55,272.353
(b) Amount Of Adjusted Capital And Surplus Used To Determine Recovery Period And Threshold Limitation In 2(b)2 Above.	\$ 1,704,189.000	\$ 1,649,327.000

4. Not Applicable

B. Deferred Tax Liabilities Not Recognized

Not Applicable

C. Current income taxes incurred consist of the following major components

(1)	(2)	(3)	
12/31/2025	12/31/2024	(Col 1-2) Change	
1. Current Income Tax			
(a) Federal	\$	\$ 0	\$ 0
(b) Foreign	\$	\$ 0	\$ 0
(c) Subtotal (1a+1b)	\$ 0	\$ 0	\$ 0
(d) Federal income tax on net capital gains	\$	\$ 0	\$ 0
(e) Utilization of capital loss carry-forwards	\$	\$ 0	\$ 0
(f) Other	\$	\$ 0	\$ 0
(g) Federal and foreign income taxes incurred (1c+1d+1e+1f)	\$ 0	\$ 0	\$ 0
2. Deferred Tax Assets:			
(a) Ordinary			
(1) Discounting of unpaid losses	\$	\$ 0	\$ 0
(2) Unearned premium reserve	\$	\$ 0	\$ 0
(3) Policyholder reserves	\$	\$ 0	\$ 0
(4) Investments	\$	\$ 0	\$ 0
(5) Deferred acquisition costs	\$	\$ 0	\$ 0
(6) Policyholder dividends accrual	\$	\$ 0	\$ 0
(7) Fixed assets	\$	\$ 0	\$ 0
(8) Compensation and benefits accrual	\$	\$ 0	\$ 0
(9) Pension accrual	\$	\$ 0	\$ 0
(10) Receivables - nonadmitted	\$	\$ 0	\$ 0
(11) Net operating loss carry-forward	\$ 1,645	\$ 518	\$ 1,127
(12) Tax credit carry-forward	\$	\$ 0	\$ 0
(13) Other	\$ 21,325	\$ 17,830	\$ 3,495
(99) Subtotal (sum of 2a1 through 2a13)	\$ 22,970	\$ 18,348	\$ 4,622
(b) Statutory valuation allowance adjustment	\$ 22,970	\$ 0	\$ 22,970
(c) Nonadmitted	\$	\$ 18,348	\$ (18,348)
(d) Admitted ordinary deferred tax assets (2a99 - 2b - 2c)	\$ 0	\$ 0	\$ 0
(e) Capital:			
(1) Investments	\$	\$ 0	\$ 0
(2) Net capital loss carry-forward	\$	\$ 0	\$ 0
(3) Real estate	\$	\$ 0	\$ 0
(4) Other	\$	\$ 0	\$ 0
(99) Subtotal (2e1+2e2+2e3+2e4)	\$ 0	\$ 0	\$ 0
(f) Statutory valuation allowance adjustment	\$	\$ 0	\$ 0
(g) Nonadmitted	\$	\$ 0	\$ 0
(h) Admitted capital deferred tax assets (2e99 - 2f - 2g)	\$ 0	\$ 0	\$ 0
(i) Admitted deferred tax assets (2d + 2h)	\$ 0	\$ 0	\$ 0
3. Deferred Tax Liabilities:			
(a) Ordinary			
(1) Investments	\$	\$ 0	\$ 0
(2) Fixed assets	\$	\$ 0	\$ 0
(3) Deferred and uncollected premium	\$	\$ 0	\$ 0
(4) Policyholder reserves	\$	\$ 0	\$ 0
(5) Other	\$	\$ 0	\$ 0
(99) Subtotal (3a1+3a2+3a3+3a4+3a5)	\$ 0	\$ 0	\$ 0
(b) Capital:			
(1) Investments	\$	\$ 0	\$ 0
(2) Real estate	\$	\$ 0	\$ 0
(3) Other	\$	\$ 0	\$ 0
(99) Subtotal (3b1+3b2+3b3)	\$ 0	\$ 0	\$ 0
(c) Deferred tax liabilities (3a99 + 3b99)	\$ 0	\$ 0	\$ 0
4. Net deferred tax assets/liabilities (2i - 3c)	\$ 0	\$ 0	\$ 0

D. Among the more significant book to tax adjustments were the following:

For tax purposes, accrued surplus note interest is considered deductible up to the limits imposed by IRC Section 163(j). For book purposes, surplus note interest is not expensed until it has been approved for payment.

E. Operating Loss and Tax Credit Carryforwards

(1) The Company has net operating loss carryforwards of \$7,835.

ANNUAL STATEMENT FOR THE YEAR 2025 OF THE CareSource Arkansas Health Plan Co.

(2) Not Applicable

(3) Not Applicable

F. Consolidated Federal Income Tax Return

Not Applicable

G. Federal or Foreign Income Tax Loss Contingencies

Not Applicable

H. Repatriation Transition Tax (RTT)

Not Applicable

I. Alternative Minimum Tax Credit

Not Applicable

Note 10 - Information Concerning Parent, Subsidiaries, Affiliates and Other Related Parties

A. Nature of the Relationship Involved

The Company's ultimate parent is CareSource (CS). CS owns CareSource Holding LLC (CSH), which subsequently has 100% ownership of the Company.

B. Detail of Transactions

CareSource provided a capital infusion to the Company of \$360,000 and \$400,000 in 2020 and 2022, respectively. The Company issued a surplus note to CareSource in the amount of \$750,000 on February 18, 2022.

C. Transactions with related party who are not reported on Schedule Y

Not Applicable

D. Amounts Due From or To Related Parties

Not Applicable

E. Material Management or Service Contracts and Cost-Sharing Arrangements

Not Applicable

F. Guarantees or Undertakings

Not Applicable

G. Nature of the Control Relationship

The Company is a wholly owned subsidiary of CareSource Holding LLC, which subsequently is owned by CareSource.

H. Amount Deducted for Investment in Upstream Intermediate Entity or Ultimate Parent Owned

Not Applicable

I. Investments in SCA that Exceed 10% of Admitted Assets

Not Applicable

J. Investments in Impaired SCAs

Not Applicable

K. Investment in Foreign Insurance Subsidiary

Not Applicable

L. Investment in Downstream Noninsurance Holding Company

Not Applicable

M. All SCA Investments

Not Applicable

N. Investment in Insurance SCAs

Not Applicable

O. SCA or SSAP No. 48 Entity Loss Tracking

Not Applicable

Note 11 - Debt

Not Applicable

Note 12 - Retirement Plans, Deferred Compensation, Postemployment Benefits and Compensated Absences and Other Postretirement Benefit Plans

Not Applicable

Note 13 - Capital and Surplus, Dividend Restrictions and Quasi-Reorganizations

A. Number of Shares of Each Class of Capital Stock, Authorized, Issued and Outstanding and the Par or Stated Value of Each Class

The Company is authorized to issue 500 shares of common stock at no par value. As of December 31, 2025, the Company has 500 issued and outstanding shares.

B. Dividend Rate, Liquidation Value and Redemption Schedule of Preferred Stock Issues

Not Applicable

C. Dividend Restrictions

Not Applicable

D. Dates and Amounts of Dividends Paid

Not Applicable

E. Profits that may be Paid as Ordinary Dividends to Stockholders

Not Applicable

F. Restrictions on Unassigned Funds (Surplus)

Not Applicable

G. Mutual Reciprocal Amounts of Advances to Surplus not Repaid

Not Applicable

H. Amount of Stock Held for Special Purposes

Not Applicable

I. Reasons for Changes in Balance of Special Surplus Funds from Prior Period

Not Applicable

J. Changes in Unassigned Funds

Not Applicable

K. The Company issued the following surplus debentures or similar obligations:

The Company entered into a \$750,000 surplus note arrangement with its parent CareSource effective February 18, 2022 to ensure capital requirements were maintained. The surplus note was issued pursuant to Rule 144A under the Securities Act of 1933 in the form of cash, underwritten by CS, in the ownership percentage of 100%. Interest was calculated with an effective rate of 9.75% as of December 31, 2025.

The surplus note repayments of interest and principal may only be made with prior approval of the State of Arkansas and only to the extent the Company has sufficient surplus earnings to make such payment.

The surplus notes have the following repayment conditions and restrictions: The amount payable in each Calendar Year of the Term shall be determined by Borrower, subject to the provisions of this Surplus Note. Notwithstanding the above, no repayment of principal or payment of accrued interest shall be made by Borrower except out of Borrower's earned surplus in excess of the greater of the minimum surplus required of Borrower in order to transact the kinds of insurance for which Borrower is authorized under the laws of the State of Arkansas or Borrower's surplus at the time the loan was made, and any such repayment of principal or payment of accrued interest to be made by Borrower must be submitted to, and approved by, the Commissioner prior to Borrower making such payment or repayment.

The surplus notes have the following subordination terms: This Surplus Note shall be subordinate to policyholder claims, to other claimant and beneficiary claims and to all other classes of Borrower's creditors other than Surplus Note holders.

The liquidation preference to the insurer's common and preferred shareholders are not applicable.

ANNUAL STATEMENT FOR THE YEAR 2025 OF THE CareSource Arkansas Health Plan Co.

The Company has outstanding \$750,000 or 100% debentures due in 2032 issued on 02/18/2022. The carrying amount of the debt is \$750,000 with an effective rate of 6.25% or 3% above NY Prime at the end of each quarter. The debentures may be repaid early by Borrower without penalty. The Company is not required to make annual sinking fund payments that will provide sufficient funds for the retirement of debentures at maturity. Interest paid during 2025 was \$0.

The Company has an outstanding liability for borrowed money in the amount of \$1,052,233 due to CS on 02/20/2032. At the option of the Company, early repayment may be made. The Company is not required to maintain a collateral security deposit with the lender. As of December 31, 2025, no assets having an admitted value and a fair value were on deposit with the lender.

1 Item Number	2 Date Issued	3 Interest Rate	4 Original Issue Amount of Note	5 Is Surplus Note Holder a Related Party (Y/N)	6 Carrying Value of Note Prior Year	7 Carrying Value of Note Current Year *	8 Unapproved Interest And/Or Principal
1	02/18/2022	9.750	750,000	YES	750,000	750,000	302,233
Total	XXX	XXX	\$ 750,000	XXX	\$ 750,000	\$ 750,000	\$ 302,233

* Total should agree with Page 3, Line 29.

1 Item Number	9 Current Year Interest Expense Recognized	10 Life-To-Date Interest Expense Recognized	11 Current Year Interest Offset Percentage (not including amounts paid to 3 rd party liquidity provider).	12 Current Year Principal Paid	13 Life-To-Date Principal Paid	14 Date of Maturity
1	0	0	0.000	0	0	02/20/2032
Total	\$ 0	\$ 0	XXX	\$ 0	\$ 0	XXX

1 Item Number	15 Are Surplus Note payments contractually linked? (Y/N)	16 Surplus Note payments subject to administrative offsetting provisions? (Y/N)	17 Were Surplus Note proceeds used to purchase an asset directly from the holder of the surplus note? (Y/N)	18 Is Asset Issuer a Related Party (Y/N)	19 Type of Assets Received Upon Issuance
1	NO	NO	NO	YES	Cash
Total	XXX	XXX	XXX	XXX	XXX

1 Item Number	20 Principal Amount of Assets Received Upon Issuance	21 Book/Adjusted Carry Value of Assets	22 Is Liquidity Source a Related Party to the Surplus Note Issuer? (Y/N)
1	750,000	750,000	NO
Total	750,000	750,000	XXX

L. The Impact of any Restatement Due to Prior Quasi-Reorganizations

Not Applicable

M. Effective Date of Quasi-Reorganization for a Period of Ten Years Following Reorganization

Not Applicable

Note 14 - Liabilities, Contingencies and Assessments

Not Applicable

Note 15 - Leases

Not Applicable

Note 16 - Information About Financial Instruments With Off-Balance-Sheet Risk And Financial Instruments With Concentrations of Credit Risk

Not Applicable

Note 17 - Sale, Transfer and Servicing of Financial Assets and Extinguishments of Liabilities

Not Applicable

A. Transfers of Receivables Reported as Sales

Not Applicable

B. Transfer and Servicing of Financial Assets

Not Applicable

C. Wash Sales

Not Applicable

Note 18 - Gain or Loss to the Reporting Entity from Uninsured Plans and the Uninsured Portion of Partially Insured Plans

Not Applicable

Note 19 - Direct Premium Written/Produced by Managing General Agents/Third-Party Administrators

Not Applicable

Note 20 - Fair Value Measurements

A. Assets and Liabilities Measured at Fair Value

The Company had cash of \$1,584,589 and \$1,516,449, respectively, as of December 31, 2025 and December 31, 2024.

B. Other Fair Value Disclosures

Not Applicable

C. Fair Value of Financial Instruments

Type of Financial Instrument	Aggregate Fair Value	Admitted Assets	(Level 1)	(Level 2)	(Level 3)	Net Asset Value (NAV)	Not Practicable (Carrying Value)
Bonds - ICO	\$ 111,461	\$ 110,785	\$ 0	\$ 111,461	\$ 0		
Cash, Cash Equivalents, and Short-Term Investments	\$ 1,584,589	\$ 1,584,589	\$ 1,584,589	\$ 0	\$ 0		

D. Not Practicable to Estimate Fair Value

Not Applicable

E. Investments Measured using the NAV as Practical Expedient

Not Applicable

Note 21 - Other Items

Not Applicable

Note 22 - Events Subsequent

Subsequent events have been considered through February 27, 2026 for the statutory statements issued on February 27, 2026.

- a. Type I – Recognized Subsequent Events - None
- b. Type II – Nonrecognized Subsequent Events – None

Note 23 - Reinsurance

Not Applicable

Note 24 - Retrospectively Rated Contracts & Contracts Subject to Redetermination

Not Applicable

Note 25 - Changes in Incurred Claims and Claim Adjustment Expenses

The company did not have any unpaid claims or claims adjustments expenses as of December 31, 2025, and December 31, 2024.

Note 26 - Intercompany Pooling Arrangements

Not Applicable

Note 27 - Structured Settlements

Health Entities should not complete this Note.

Note 28 - Health Care Receivables

Not Applicable

Note 29 - Participating Policies

Not Applicable

Note 30 - Premium Deficiency Reserves

Not Applicable

Note 31 - Anticipated Salvage and Subrogation

Not Applicable

ANNUAL STATEMENT FOR THE YEAR 2025 OF THE CareSource Arkansas Health Plan Co.

GENERAL INTERROGATORIES

PART 1 - COMMON INTERROGATORIES

GENERAL

- 1.1 Is the reporting entity a member of an Insurance Holding Company System consisting of two or more affiliated persons, one or more of which is an insurer? Yes [X] No []
 If yes, complete Schedule Y, Parts 1, 1A, 2 and 3.
- 1.2 If yes, did the reporting entity register and file with its domiciliary State Insurance Commissioner, Director or Superintendent or with such regulatory official of the state of domicile of the principal insurer in the Holding Company System, a registration statement providing disclosure substantially similar to the standards adopted by the National Association of Insurance Commissioners (NAIC) in its Model Insurance Holding Company System Regulatory Act and model regulations pertaining thereto, or is the reporting entity subject to standards and disclosure requirements substantially similar to those required by such Act and regulations? Yes [X] No [] N/A []
- 1.3 State Regulating? Arkansas.....
- 1.4 Is the reporting entity publicly traded or a member of a publicly traded group? Yes [] No [X]
- 1.5 If the response to 1.4 is yes, provide the CIK (Central Index Key) code issued by the SEC for the entity/group.
- 2.1 Has any change been made during the year of this statement in the charter, by-laws, articles of incorporation, or deed of settlement of the reporting entity? Yes [] No [X]
- 2.2 If yes, date of change:
- 3.1 State as of what date the latest financial examination of the reporting entity was made or is being made.12/31/9999
- 3.2 State the as of date that the latest financial examination report became available from either the state of domicile or the reporting entity. This date should be the date of the examined balance sheet and not the date the report was completed or released.12/31/9999
- 3.3 State as of what date the latest financial examination report became available to other states or the public from either the state of domicile or the reporting entity. This is the release date or completion date of the examination report and not the date of the examination (balance sheet date).12/31/9999
- 3.4 By what department or departments? Arkansas Insurance Department.....
- 3.5 Have all financial statement adjustments within the latest financial examination report been accounted for in a subsequent financial statement filed with Departments? Yes [] No [] N/A [X]
- 3.6 Have all of the recommendations within the latest financial examination report been complied with? Yes [] No [] N/A [X]
- 4.1 During the period covered by this statement, did any agent, broker, sales representative, non-affiliated sales/service organization or any combination thereof under common control (other than salaried employees of the reporting entity) receive credit or commissions for or control a substantial part (more than 20 percent of any major line of business measured on direct premiums) of:
- 4.11 sales of new business? Yes [] No [X]
- 4.12 renewals? Yes [] No [X]
- 4.2 During the period covered by this statement, did any sales/service organization owned in whole or in part by the reporting entity or an affiliate, receive credit or commissions for or control a substantial part (more than 20 percent of any major line of business measured on direct premiums) of:
- 4.21 sales of new business? Yes [] No [X]
- 4.22 renewals? Yes [] No [X]
- 5.1 Has the reporting entity been a party to a merger or consolidation during the period covered by this statement? Yes [] No [X]
 If yes, complete and file the merger history data file with the NAIC.
- 5.2 If yes, provide the name of the entity, NAIC company code, and state of domicile (use two letter state abbreviation) for any entity that has ceased to exist as a result of the merger or consolidation.

1 Name of Entity	2 NAIC Company Code	3 State of Domicile
.....
.....

- 6.1 Has the reporting entity had any Certificates of Authority, licenses or registrations (including corporate registration, if applicable) suspended or revoked by any governmental entity during the reporting period? Yes [] No [X]
- 6.2 If yes, give full information
- 7.1 Does any foreign (non-United States) person or entity directly or indirectly control 10% or more of the reporting entity? Yes [] No [X]
- 7.2 If yes,0.0 %
- 7.21 State the percentage of foreign control
- 7.22 State the nationality(s) of the foreign person(s) or entity(s); or if the entity is a mutual or reciprocal, the nationality of its manager or attorney-in-fact and identify the type of entity(s) (e.g., individual, corporation, government, manager or attorney-in-fact).

1 Nationality	2 Type of Entity
.....
.....

- 8.1 Is the company a subsidiary of a depository institution holding company (DIHC) or a DIHC itself, regulated by the Federal Reserve Board? Yes [] No [X]
- 8.2 If response to 8.1 is yes, please identify the name of the DIHC.
- 8.3 Is the company affiliated with one or more banks, thrifts or securities firms? Yes [] No [X]
- 8.4 If response to 8.3 is yes, please provide the names and locations (city and state of the main office) of any affiliates regulated by a federal financial regulatory services agency [i.e. the Federal Reserve Board (FRB), the Office of the Comptroller of the Currency (OCC), the Federal Deposit Insurance Corporation (FDIC) and the Securities Exchange Commission (SEC)] and identify the affiliate's primary federal regulator.

1 Affiliate Name	2 Location (City, State)	3 FRB	4 OCC	5 FDIC	6 SEC
.....

- 8.5 Is the reporting entity a depository institution holding company with significant insurance operations as defined by the Board of Governors of Federal Reserve System or a subsidiary of the depository institution holding company? Yes [] No [X]
- 8.6 If response to 8.5 is no, is the reporting entity a company or subsidiary of a company that has otherwise been made subject to the Federal Reserve Board's capital rule? Yes [] No [X] N/A []
9. What is the name and address of the independent certified public accountant or accounting firm retained to conduct the annual audit? Ernst & Young LLP, 111 Monument Circle, Suite 4000, Indianapolis, Indiana, 46204.....
- 10.1 Has the insurer been granted any exemptions to the prohibited non-audit services provided by the certified independent public accountant requirements as allowed in Section 7H of the Annual Financial Reporting Model Regulation (Model Audit Rule), or substantially similar state law or regulation? Yes [] No [X]
- 10.2 If the response to 10.1 is yes, provide information related to this exemption:
- 10.3 Has the insurer been granted any exemptions related to the other requirements of the Annual Financial Reporting Model Regulation as allowed for in Section 18A of the Model Regulation, or substantially similar state law or regulation? Yes [X] No []

ANNUAL STATEMENT FOR THE YEAR 2025 OF THE CareSource Arkansas Health Plan Co.

GENERAL INTERROGATORIES

PART 1 - COMMON INTERROGATORIES

- 10.4 If the response to 10.3 is yes, provide information related to this exemption:
Business not written.....
- 10.5 Has the reporting entity established an Audit Committee in compliance with the domiciliary state insurance laws? Yes [X] No [] N/A []
- 10.6 If the response to 10.5 is no or n/a, please explain
11. What is the name, address and affiliation (officer/employee of the reporting entity or actuary/consultant associated with an actuarial consulting firm) of the individual providing the statement of actuarial opinion/certification?
Stephanie Williams, 230 N. Main St, Dayton, OH 45402, Employee of CareSource Management Services.....
- 12.1 Does the reporting entity own any securities of a real estate holding company or otherwise hold real estate indirectly? Yes [] No [X]
- 12.11 Name of real estate holding company
- 12.12 Number of parcels involved0
- 12.13 Total book/adjusted carrying value \$.....
- 12.2 If yes, provide explanation
13. FOR UNITED STATES BRANCHES OF ALIEN REPORTING ENTITIES ONLY:
- 13.1 What changes have been made during the year in the United States manager or the United States trustees of the reporting entity?
- 13.2 Does this statement contain all business transacted for the reporting entity through its United States Branch on risks wherever located? Yes [] No [X]
- 13.3 Have there been any changes made to any of the trust indentures during the year? Yes [] No [X]
- 13.4 If answer to (13.3) is yes, has the domiciliary or entry state approved the changes? Yes [] No [] N/A [X]
- 14.1 Are the senior officers (principal executive officer, principal financial officer, principal accounting officer or controller, or persons performing similar functions) of the reporting entity subject to a code of ethics, which includes the following standards?
Yes [X] No []
- a. Honest and ethical conduct, including the ethical handling of actual or apparent conflicts of interest between personal and professional relationships;
- b. Full, fair, accurate, timely and understandable disclosure in the periodic reports required to be filed by the reporting entity;
- c. Compliance with applicable governmental laws, rules and regulations;
- d. The prompt internal reporting of violations to an appropriate person or persons identified in the code; and
- e. Accountability for adherence to the code.
- 14.11 If the response to 14.1 is no, please explain:
- 14.2 Has the code of ethics for senior managers been amended? Yes [X] No []
- 14.21 If the response to 14.2 is yes, provide information related to amendment(s).
Code of Conduct is updated and approved by Board of Directors annually.....
- 14.3 Have any provisions of the code of ethics been waived for any of the specified officers? Yes [] No [X]
- 14.31 If the response to 14.3 is yes, provide the nature of any waiver(s).
- 15.1 Is the reporting entity the beneficiary of a Letter of Credit that is unrelated to reinsurance where the issuing or confirming bank is not on the SVO Bank List? Yes [] No [X]
- 15.2 If the response to 15.1 is yes, indicate the American Bankers Association (ABA) Routing Number and the name of the issuing or confirming bank of the Letter of Credit and describe the circumstances in which the Letter of Credit is triggered.

1	2	3	4
American Bankers Association (ABA) Routing Number	Issuing or Confirming Bank Name	Circumstances That Can Trigger the Letter of Credit	Amount

BOARD OF DIRECTORS

16. Is the purchase or sale of all investments of the reporting entity passed upon either by the board of directors or a subordinate committee thereof? Yes [X] No []
17. Does the reporting entity keep a complete permanent record of the proceedings of its board of directors and all subordinate committees thereof? Yes [X] No []
18. Has the reporting entity an established procedure for disclosure to its board of directors or trustees of any material interest or affiliation on the part of any of its officers, directors, trustees or responsible employees that is in conflict or is likely to conflict with the official duties of such person? Yes [X] No []

FINANCIAL

19. Has this statement been prepared using a basis of accounting other than Statutory Accounting Principles (e.g., Generally Accepted Accounting Principles)? Yes [] No [X]
- 20.1 Total amount loaned during the year (inclusive of Separate Accounts, exclusive of policy loans):
- 20.11 To directors or other officers \$.....
- 20.12 To stockholders not officers \$.....
- 20.13 Trustees, supreme or grand (Fraternal only) \$.....
- 20.2 Total amount of loans outstanding at the end of year (inclusive of Separate Accounts, exclusive of policy loans):
- 20.21 To directors or other officers \$.....
- 20.22 To stockholders not officers \$.....
- 20.23 Trustees, supreme or grand (Fraternal only) \$.....
- 21.1 Were any assets reported in this statement subject to a contractual obligation to transfer to another party without the liability for such obligation being reported in the statement? Yes [] No [X]
- 21.2 If yes, state the amount thereof at December 31 of the current year:
- 21.21 Rented from others \$.....
- 21.22 Borrowed from others \$.....
- 21.23 Leased from others \$.....
- 21.24 Other \$.....
- 22.1 Does this statement include payments for assessments as described in the *Annual Statement Instructions* other than guaranty fund or guaranty association assessments? Yes [] No [X]
- 22.2 If answer is yes:
- 22.21 Amount paid as losses or risk adjustment \$.....
- 22.22 Amount paid as expenses \$.....
- 22.23 Other amounts paid \$.....
- 23.1 Does the reporting entity report any amounts due from parent, subsidiaries or affiliates on Page 2 of this statement? Yes [] No [X]
- 23.2 If yes, indicate any amounts receivable from parent included in the Page 2 amount: \$.....
- 24.1 Does the insurer utilize third parties to pay agent commissions in which the amounts advanced by the third parties are not settled in full within 90 days? Yes [] No [X]
- 24.2 If the response to 24.1 is yes, identify the third-party that pays the agents and whether they are a related party.

1	2
Name of Third-Party	Is the Third-Party Agent a Related Party (Yes/No)

GENERAL INTERROGATORIES

PART 1 - COMMON INTERROGATORIES

INVESTMENT

- 25.01 Were all the stocks, bonds and other securities owned December 31 of current year, over which the reporting entity has exclusive control, in the actual possession of the reporting entity on said date? (other than securities lending programs addressed in 25.03) Yes [X] No []
- 25.02 If no, give full and complete information, relating thereto
- 25.03 For securities lending programs, provide a description of the program including value for collateral and amount of loaned securities, and whether collateral is carried on or off-balance sheet. (an alternative is to reference Note 17 where this information is also provided)
- 25.04 For the reporting entity's securities lending program, report amount of collateral for conforming programs as outlined in the Risk-Based Capital Instructions. \$.....0
- 25.05 For the reporting entity's securities lending program, report amount of collateral for other programs. \$.....0
- 25.06 Does your securities lending program require 102% (domestic securities) and 105% (foreign securities) from the counterparty at the outset of the contract? Yes [] No [] NA [X]
- 25.07 Does the reporting entity non-admit when the collateral received from the counterparty falls below 100%? Yes [] No [] NA [X]
- 25.08 Does the reporting entity or the reporting entity's securities lending agent utilize the Master Securities Lending Agreement (MSLA) to conduct securities lending? Yes [] No [] NA [X]
- 25.09 For the reporting entity's securities lending program, state the amount of the following as of December 31 of the current year:
- 25.091 Total fair value of reinvested collateral assets reported on Schedule DL, Parts 1 and 2 \$.....0
- 25.092 Total book/adjusted carrying value of reinvested collateral assets reported on Schedule DL, Parts 1 and 2 \$.....0
- 25.093 Total payable for securities lending reported on the liability page \$.....0
- 26.1 Were any of the stocks, bonds or other assets of the reporting entity owned at December 31 of the current year not exclusively under the control of the reporting entity or has the reporting entity sold or transferred any assets subject to a put option contract that is currently in force? (Exclude securities subject to Interrogatory 24.1 and 25.03). Yes [X] No []
- 26.2 If yes, state the amount thereof at December 31 of the current year:
- 26.21 Subject to repurchase agreements \$.....
- 26.22 Subject to reverse repurchase agreements \$.....
- 26.23 Subject to dollar repurchase agreements \$.....
- 26.24 Subject to reverse dollar repurchase agreements \$.....
- 26.25 Placed under option agreements \$.....
- 26.26 Letter stock or securities restricted as to sale – excluding FHLB Capital Stock \$.....
- 26.27 FHLB Capital Stock \$.....
- 26.28 On deposit with states \$.....110,785
- 26.29 On deposit with other regulatory bodies \$.....
- 26.30 Pledged as collateral – excluding collateral pledged to an FHLB \$.....
- 26.31 Pledged as collateral to FHLB – including assets backing funding agreements \$.....
- 26.32 Other \$.....

26.3 For category (26.26) provide the following:

1 Nature of Restriction	2 Description	3 Amount

- 27.1 Does the reporting entity have any hedging transactions reported on Schedule DB? Yes [] No [X]
- 27.2 If yes, has a comprehensive description of the hedging program been made available to the domiciliary state? Yes [] No [] N/A []
If no, attach a description with this statement.

LINES 27.3 through 27.5: FOR LIFE/FRATERNAL REPORTING ENTITIES ONLY:

- 27.3 Does the reporting entity utilize derivatives to hedge variable annuity guarantees subject to fluctuations as a result of interest rate sensitivity? Yes [] No [X]
- 27.4 If the response to 27.3 is YES, does the reporting entity utilize:
- 27.41 Special accounting provision of SSAP No. 108 Yes [] No []
- 27.42 Permitted accounting practice Yes [] No []
- 27.43 Other accounting guidance Yes [] No []
- 27.5 By responding YES to 27.41 regarding utilizing the special accounting provisions of SSAP No. 108, the reporting entity attests to the following: Yes [] No []
- The reporting entity has obtained explicit approval from the domiciliary state.
 - Hedging strategy subject to the special accounting provisions is consistent with the requirements of VM-21.
 - Actuarial certification has been obtained which indicates that the hedging strategy is incorporated within the establishment of VM-21 reserves and provides the impact of the hedging strategy within the Actuarial Guideline Conditional Tail Expectation Amount.
 - Financial Officer Certification has been obtained which indicates that the hedging strategy meets the definition of a Clearly Defined Hedging Strategy within VM-21 and that the Clearly Defined Hedging Strategy is the hedging strategy being used by the company in its actual day-to-day risk mitigation efforts.

- 28.1 Were any preferred stocks or bonds owned as of December 31 of the current year mandatorily convertible into equity, or, at the option of the issuer, convertible into equity? Yes [] No [X]
- 28.2 If yes, state the amount thereof at December 31 of the current year. \$.....

29. Excluding items in Schedule E – Part 3 – Special Deposits, real estate, mortgage loans and investments held physically in the reporting entity's offices, vaults or safety deposit boxes, were all stocks, bonds and other securities, owned throughout the current year held pursuant to a custodial agreement with a qualified bank or trust company in accordance with Section 1, III – General Examination Considerations, F. Outsourcing of Critical Functions, Custodial or Safekeeping agreements of the NAIC *Financial Condition Examiners Handbook*? Yes [X] No []

29.01 For agreements that comply with the requirements of the NAIC *Financial Condition Examiners Handbook*, complete the following:

1 Name of Custodian(s)	2 Custodian's Address
Regions Bank.....	250 Riverchase Parkway Birmingham, AL 35244.....

29.02 For all agreements that do not comply with the requirements of the NAIC *Financial Condition Examiners Handbook*, provide the name, location and a complete explanation:

1 Name(s)	2 Location(s)	3 Complete Explanation(s)

- 29.03 Have there been any changes, including name changes, in the custodian(s) identified in 29.01 during the current year? Yes [] No [X]
- 29.04 If yes, give full and complete information relating thereto:

1 Old Custodian	2 New Custodian	3 Date of Change	4 Reason

29.05 Investment management – Identify all investment advisors, investment managers, broker/dealers, including individuals that have the

ANNUAL STATEMENT FOR THE YEAR 2025 OF THE CareSource Arkansas Health Plan Co.

GENERAL INTERROGATORIES

PART 1 - COMMON INTERROGATORIES

authority to make investment decisions on behalf of the reporting entity. This includes both primary and sub-advisors. For assets that are managed internally by employees of the reporting entity, note as such. [...that have access to the investment accounts"; "...handle securities"]

1 Name of Firm or Individual	2 Affiliation
Just in Bell.....
Jared Hillenbrand.....

29.0597 For those firms/individuals listed in the table for Question 29.05, do any firms/individuals unaffiliated with the reporting entity (i.e., designated with a "U") manage more than 10% of the reporting entity's invested assets? Yes [] No [X] NA []

29.0598 For firms/individuals unaffiliated with the reporting entity (i.e., designated with a "U") listed in the table for Question 29.05, does the total assets under management aggregate to more than 50% of the reporting entity's invested assets? Yes [] No [X] NA []

29.06 For those firms or individuals listed in the table for 29.05 with an affiliation code of "A" (affiliated) or "U" (unaffiliated), provide the information for the table below.

1 Central Registration Depository Number	2 Name of Firm or Individual	3 Registered With	4 Investment Management Agreement (IMA) Filed
.....
.....
.....

30.1 Does the reporting entity have any diversified mutual funds reported in Schedule D - Part 2 (diversified according to the Securities and Exchange Commission (SEC) in the Investment Company Act of 1940 [Section 5 (b) (1)])? Yes [] No [X]

30.2 If yes, complete the following schedule:

1 CUSIP #	2 Name of Mutual Fund	3 Book/Adjusted Carrying Value
.....
.....
.....
30.2999 TOTAL		0

30.3 For each mutual fund listed in the table above, complete the following schedule:

1 Name of Mutual Fund (from above table)	2 Name of Significant Holding of the Mutual Fund	3 Amount of Mutual Fund's Book/Adjusted Carrying Value Attributable to the Holding	4 Date of Valuation
.....
.....
.....

31. Provide the following information for all short-term and long-term bonds and all preferred stocks. Do not substitute amortized value or statement value for fair value.

	1 Statement (Admitted) Value	2 Fair Value	3 Excess of Statement over Fair Value (-), or Fair Value over Statement (+)
31.1 Issuer Credit Obligations.....	110,785	111,461	676
31.2 Asset-Backed Securities.....			0
31.3 Preferred Stocks.....	0		0
31.4 Totals	110,785	111,461	676

31.5 Describe the sources or methods utilized in determining the fair values:
Fair value estimates are made at a specific point in time, based on available market information and judgments about the financial instrument, including discount rates, estimates of timing, amount of expected future cash flows, and the credit standing of the issuer.....

32.1 Was the rate used to calculate fair value determined by a broker or custodian for any of the securities in Schedule D? Yes [] No [X]

32.2 If the answer to 32.1 is yes, does the reporting entity have a copy of the broker's or custodian's pricing policy (hard copy or electronic copy) for all brokers or custodians used as a pricing source? Yes [] No []

32.3 If the answer to 32.2 is no, describe the reporting entity's process for determining a reliable pricing source for purposes of disclosure of fair value for Schedule D:

33.1 Have all the filing requirements of the *Purposes and Procedures Manual of the NAIC Investment Analysis Office* been followed? Yes [X] No []

33.2 If no, list exceptions:

34. By self-designating 5GI securities, the reporting entity is certifying the following elements of each self-designated 5GI security:
a. Documentation necessary to permit a full credit analysis of the security does not exist or an NAIC CRP credit rating for an FE or PL security is not available.
b. Issuer or obligor is current on all contracted interest and principal payments.
c. The insurer has an actual expectation of ultimate payment of all contracted interest and principal.
Has the reporting entity self-designated 5GI securities? Yes [] No [X]

35. By self-designating PLGI securities, the reporting entity is certifying its compliance with the requirements as specified in the *Purposes and Procedures Manual of the NAIC Investment Analysis Office* (P&P Manual) for private letter rating (PLR) securities and the following elements of each self-designated PLGI security:
a. The security was either:
i. issued prior to January 1, 2018 (which is exempt from PLR filing requirements pursuant to the P&P Manual), or
ii. issued from January 1, 2018 to December 31, 2021 and subject to a confidentiality agreement executed prior to January 1, 2022 which confidentiality agreement remains in force, for which an insurance company cannot provide a copy of a private letter rating rationale report to the SVO due to confidentiality or other contractual reasons ("waived submission PLR securities").
b. The reporting entity is holding capital commensurate with the NAIC Designation and NAIC Designation Category reported for the security.
c. The NAIC Designation and NAIC Designation Category were derived from the credit rating assigned by an NAIC CRP in its legal capacity as an NRSRO which is shown on a current private letter rating, dated during the financial statement year, held by the insurer and available for examination by state insurance regulators.
d. Other than for waived submission PLR securities, defined above, on or after January 1, 2024 for any PLR securities issued on or after January 1, 2022, if the reporting entity is not permitted to share this private credit rating or the private rating letter rationale report of the PL security with the SVO, it certifies that it is reporting it as an NAIC 5.B GI and may not assign any other self-designation.
Has the reporting entity self-designated PLGI to securities, all of which meet the above requirement and as specified in the P&P Manual? Yes [] No [X]

36. By assigning FE to a Schedule BA non-registered private fund, the reporting entity is certifying the following elements of each self-designated FE fund:
a. The shares were purchased prior to January 1, 2019.
b. The reporting entity is holding capital commensurate with the NAIC Designation reported for the security.
c. The security had a public credit rating(s) with annual surveillance assigned by an NAIC CRP in its legal capacity as an NRSRO prior
Yes [] No [X]

ANNUAL STATEMENT FOR THE YEAR 2025 OF THE CareSource Arkansas Health Plan Co.

GENERAL INTERROGATORIES

PART 1 - COMMON INTERROGATORIES

to January 1, 2019.

- d. The fund only or predominantly holds bonds in its portfolio.
- e. The current reported NAIC Designation was derived from the public credit rating(s) with annual surveillance assigned by an NAIC CRP in its legal capacity as an NRSRO.
- f. The public credit rating(s) with annual surveillance assigned by an NAIC CRP has not lapsed.

Has the reporting entity assigned FE to Schedule BA non-registered private funds that complied with the above criteria?

37. By rolling/renewing short-term or cash equivalent investments with continued reporting on Schedule DA, Part 1 or Schedule E Part 2 (identified through a code (%) in those investment schedules), the reporting entity is certifying to the following:

- a. The investment is a liquid asset that can be terminated by the reporting entity on the current maturity date.
- b. If the investment is with a nonrelated party or nonaffiliated then it reflects an arms-length transaction with renewal completed at the discretion of all involved parties.
- c. If the investment is with a related party or affiliate, then the reporting entity has completed robust re-underwriting of the transaction for which documentation is available for regulator review.
- d. Short-term and cash equivalent investments that have been renewed/rolled from the prior period that do not meet the criteria in 37.a -37.c are reported as long-term investments.

Has the reporting entity rolled/renewed short-term or cash equivalent investments in accordance with these criteria?

Yes [X] No [] NA []

38.1 Does the reporting entity directly hold cryptocurrencies? Yes [] No [X]

Yes [] No [X]

38.2 If the response to 38.1 is yes, on what schedule are they reported?

39.1 Does the reporting entity directly or indirectly accept cryptocurrencies as payments for premiums on policies? Yes [] No [X]

Yes [] No [X]

39.2 If the response to 39.1 is yes, are the cryptocurrencies held directly or are they immediately converted to U.S. dollars?

39.21 Held directly

Yes [] No []

39.22 Immediately converted to U.S. dollars

Yes [] No []

39.3 If the response to 38.1 or 39.1 is yes, list all cryptocurrencies accepted for payments of premiums or that are held directly.

1 Name of Cryptocurrency	2 Immediately Converted to USD, Directly Held, or Both	3 Accepted for Payment of Premiums

OTHER

40.1 Amount of payments to trade associations, service organizations and statistical or rating bureaus, if any? \$

\$

40.2 List the name of the organization and the amount paid if any such payment represented 25% or more of the total payments to trade associations, service organizations, and statistical or rating bureaus during the period covered by this statement.

1 Name	2 Amount Paid
.....	\$
.....	\$
.....	\$

41.1 Amount of payments for legal expenses, if any? \$

\$

41.2 List the name of the firm and the amount paid if any such payment represented 25% or more of the total payments for legal expenses during the period covered by this statement.

1 Name	2 Amount Paid
.....	\$
.....	\$
.....	\$

42.1 Amount of payments for expenditures in connection with matters before legislative bodies, officers, or departments of government, if any? \$

\$

42.2 List the name of the firm and the amount paid if any such payment represented 25% or more of the total payment expenditures in connection with matters before legislative bodies, officers, or departments of government during the period covered by this statement.

1 Name	2 Amount Paid
.....	\$
.....	\$
.....	\$

GENERAL INTERROGATORIES

PART 2 - HEALTH INTERROGATORIES

- 1.1 Does the reporting entity have any direct Medicare Supplement Insurance in force? Yes [] No [X]
- 1.2 If yes, indicate premium earned on U.S. business only. \$0
- 1.3 What portion of Item (1.2) is not reported on the Medicare Supplement Insurance Experience Exhibit? \$
- 1.31 Reason for excluding
- 1.4 Indicate amount of earned premium attributable to Canadian and/or Other Alien not included in Item (1.2) above \$
- 1.5 Indicate total incurred claims on all Medicare Supplement insurance. \$0
- 1.6 Individual policies:
- Most current three years:
- 1.61 Total premium earned \$0
- 1.62 Total incurred claims \$0
- 1.63 Number of covered lives0
- All years prior to most current three years:
- 1.64 Total premium earned \$0
- 1.65 Total incurred claims \$0
- 1.66 Number of covered lives0
- 1.7 Group policies:
- Most current three years:
- 1.71 Total premium earned \$0
- 1.72 Total incurred claims \$0
- 1.73 Number of covered lives0
- All years prior to most current three years:
- 1.74 Total premium earned \$0
- 1.75 Total incurred claims \$0
- 1.76 Number of covered lives0

2. Health Test:

		1		2
		Current Year		Prior Year
2.1	Premium Numerator	\$0	\$0
2.2	Premium Denominator	\$0	\$0
2.3	Premium Ratio (2.1/2.2)0.000	0.000
2.4	Reserve Numerator	\$0	\$0
2.5	Reserve Denominator	\$0	\$0
2.6	Reserve Ratio (2.4/2.5)0.000	0.000

- 3.1 Has the reporting entity received any endowment or gift from contracting hospitals, physicians, dentists, or others that is agreed will be returned when, as and if the earnings of the reporting entity permits? Yes [] No [X]
- 3.2 If yes, give particulars:
- 4.1 Have copies of all agreements stating the period and nature of hospitals', physicians', and dentists' care offered to subscribers and dependents been filed with the appropriate regulatory agency? Yes [X] No []
- 4.2 If not previously filed, furnish herewith a copy(ies) of such agreement(s). Do these agreements include additional benefits offered? Yes [] No []
- 5.1 Does the reporting entity have stop-loss reinsurance? Yes [] No [X]
- 5.2 If no, explain:
No business is currently being written in Caresource Arkansas Health Plan
- 5.3 Maximum retained risk (see instructions)
- 5.31 Comprehensive Medical \$
- 5.32 Medical Only \$
- 5.33 Medicare Supplement \$
- 5.34 Dental and Vision \$
- 5.35 Other Limited Benefit Plan \$
- 5.36 Other \$
6. Describe arrangement which the reporting entity may have to protect subscribers and their dependents against the risk of insolvency including hold harmless provisions, conversion privileges with other carriers, agreements with providers to continue rendering services, and any other agreements:
- 7.1 Does the reporting entity set up its claim liability for provider services on a service date basis? Yes [] No [X]
- 7.2 If no, give details
No claims liability has been established as Caresource Arkansas Health Plan has not begun writing premiums
8. Provide the following information regarding participating providers:
- 8.1 Number of providers at start of reporting year0
- 8.2 Number of providers at end of reporting year
- 9.1 Does the reporting entity have business subject to premium rate guarantees? Yes [] No [X]
- 9.2 If yes, direct premium earned:
- 9.21 Business with rate guarantees between 15-36 months
- 9.22 Business with rate guarantees over 36 months

GENERAL INTERROGATORIES

PART 2 - HEALTH INTERROGATORIES

- 10.1 Does the reporting entity have Incentive Pool, Withhold or Bonus Arrangements in its provider contracts? Yes [] No [X]
- 10.2 If yes:
- 10.21 Maximum amount payable bonuses \$.....
- 10.22 Amount actually paid for year bonuses \$.....
- 10.23 Maximum amount payable withholds \$.....
- 10.24 Amount actually paid for year withholds \$.....
- 11.1 Is the reporting entity organized as:
- 11.12 A Medical Group/Staff Model, Yes [] No [X]
- 11.13 An Individual Practice Association (IPA), or, Yes [] No [X]
- 11.14 A Mixed Model (combination of above) ? Yes [] No [X]
- 11.2 Is the reporting entity subject to Statutory Minimum Capital and Surplus Requirements? Yes [X] No []
- 11.3 If yes, show the name of the state requiring such minimum capital and surplus. Arkansas.....
- 11.4 If yes, show the amount required. \$.....1,500,000
- 11.5 Is this amount included as part of a contingency reserve in stockholder's equity? Yes [] No [X]
- 11.6 If the amount is calculated, show the calculation

12. List service areas in which reporting entity is licensed to operate:

1
Name of Service Area

- 13.1 Do you act as a custodian for health savings accounts? Yes [] No [X]
- 13.2 If yes, please provide the amount of custodial funds held as of the reporting date. \$.....
- 13.3 Do you act as an administrator for health savings accounts? Yes [] No [X]
- 13.4 If yes, please provide the balance of the funds administered as of the reporting date. \$.....
- 14.1 Are any of the captive affiliates reported on Schedule S, Part 3 as authorized reinsurers? Yes [] No [] N/A [X]
- 14.2 If the answer to 14.1 is yes, please provide the following:

1 Company Name	2 NAIC Company Code	3 Domiciliary Jurisdiction	4 Reserve Credit	Assets Supporting Reserve Credit		
				5 Letters of Credit	6 Trust Agreements	7 Other

15. Provide the following for individual ordinary life insurance* policies (U.S. business only) for the current year (prior to reinsurance assumed or ceded).

- 15.1 Direct Premium Written \$.....
- 15.2 Total Incurred Claims \$.....
- 15.3 Number of Covered Lives

*Ordinary Life Insurance Includes
Term (whether full underwriting, limited underwriting, jet issue, "short form app")
Whole Life (whether full underwriting, limited underwriting, jet issue, "short form app")
Variable Life (with or without secondary guarantee)
Universal Life (with or without secondary guarantee)
Variable Universal Life (with or without secondary guarantee)

16. Is the reporting entity licensed or chartered, registered, qualified, eligible or writing business in at least two states? Yes [] No [X]
- 16.1 If no, does the reporting entity assume reinsurance business that covers risks residing in at least one state other than the state of domicile of the reporting entity? Yes [] No [X]

FIVE - YEAR HISTORICAL DATA

	1 2025	2 2024	3 2023	4 2022	5 2021
Balance Sheet (Pages 2 and 3)					
1. Total admitted assets (Page 2, Line 28)	1,704,188	1,649,327	1,577,578	1,518,286	0
2. Total liabilities (Page 3, Line 24)	0	0	0	0	0
3. Statutory minimum capital and surplus requirement	1,500,000	1,500,000	1,500,000	1,500,000	0
4. Total capital and surplus (Page 3, Line 33)	1,704,188	1,649,327	1,577,577	1,518,286	0
Income Statement (Page 4)					
5. Total revenues (Line 8)	0	0	0	0	0
6. Total medical and hospital expenses (Line 18)	0	0	0	0	0
7. Claims adjustment expenses (Line 20)	0	0	0	0	0
8. Total administrative expenses (Line 21)	615	450	450	198	0
9. Net underwriting gain (loss) (Line 24)	(615)	(450)	(450)	(198)	0
10. Net investment gain (loss) (Line 27)	55,476	72,229	59,741	7,255	0
11. Total other income (Lines 28 plus 29)	0	0	0	0	0
12. Net income or (loss) (Line 32)	54,861	71,750	59,291	7,057	0
Cash Flow (Page 6)					
13. Net cash from operations (Line 11).....	54,249	70,336	50,114	6,826	0
Risk-Based Capital Analysis					
14. Total adjusted capital.....	1,704,188	1,649,327	1,577,577	1,518,286	0
15. Authorized control level risk-based capital.....	3,019	2,984	2,867	4,149	0
Enrollment (Exhibit 1)					
16. Total members at end of period (Column 5, Line 7)	0	0	0	0	0
17. Total members months (Column 6, Line 7)	0	0	0	0	0
Operating Percentage (Page 4)					
(Item divided by Page 4, sum of Lines 2, 3, and 5) x 100.0					
18. Premiums earned plus risk revenue (Line 2 plus Lines 3 and 5)	100.0	100.0	100.0	100.0	100.0
19. Total hospital and medical plus other non-health (Lines 18 plus Line 19)	0.0	0.0	0.0	0.0	0.0
20. Cost containment expenses	0.0	0.0	0.0	0.0	0.0
21. Other claims adjustment expenses	0.0	0.0	0.0	0.0	0.0
22. Total underwriting deductions (Line 23)	0.0	0.0	0.0	0.0	0.0
23. Total underwriting gain (loss) (Line 24)	0.0	0.0	0.0	0.0	0.0
Unpaid Claims Analysis					
(U&I Exhibit, Part 2B)					
24. Total claims incurred for prior years (Line 17, Col. 5)	0	0	0	0	0
25. Estimated liability of unpaid claims – [prior year (Line 17, Col. 6)]	0	0	0	0	0
Investments in Parent, Subsidiaries and Affiliates					
26. Affiliated bonds (Sch. D Summary, Line 9 + 15, Col. 1)	0	0	0	0	0
27. Affiliated preferred stocks (Sch. D Summary, Line 22, Col. 1)	0	0	0	0	0
28. Affiliated common stocks (Sch. D Summary, Line 28, Col. 1)	0	0	0	0	0
29. Affiliated mortgage loans on real estate	0	0	0	0	0
30. All other affiliated	0	0	0	0	0
31. Total of above Lines 26 to 30.....	0	0	0	0	0
32. Total investment in parent included in Lines 26 to 30 above	0	0	0	0	0

NOTE: If a party to a merger, have the two most recent years of this exhibit been restated due to a merger in compliance with the disclosure requirements of SSAP No. 3 - Accounting Changes and Corrections of Errors?..... Yes [] No []

If no, please explain

SCHEDULE T - PREMIUMS AND OTHER CONSIDERATIONS

Allocated by States and Territories

State, Etc.	1 Active Status (a)	Direct Business Only									
		2 Accident & Health Premiums	3 Medicare Title XVIII	4 Medicaid Title XIX	5 CHIP Title XXI	6 Federal Employees Health Benefits Plan Premiums	7 Life & Annuity Premiums & Other Considerations	8 Property/Casualty Premiums	9 Total Columns 2 Through 8	10 Deposit-Type Contracts	
1. Alabama	AL	N								0	0
2. Alaska	AK	N								0	0
3. Arizona	AZ	N								0	0
4. Arkansas	AR	L								0	0
5. California	CA	N								0	0
6. Colorado	CO	N								0	0
7. Connecticut	CT	N								0	0
8. Delaware	DE	N								0	0
9. District of Columbia	DC	N								0	0
10. Florida	FL	N								0	0
11. Georgia	GA	N								0	0
12. Hawaii	HI	N								0	0
13. Idaho	ID	N								0	0
14. Illinois	IL	N								0	0
15. Indiana	IN	N								0	0
16. Iowa	IA	N								0	0
17. Kansas	KS	N								0	0
18. Kentucky	KY	N								0	0
19. Louisiana	LA	N								0	0
20. Maine	ME	N								0	0
21. Maryland	MD	N								0	0
22. Massachusetts	MA	N								0	0
23. Michigan	MI	N								0	0
24. Minnesota	MN	N								0	0
25. Mississippi	MS	N								0	0
26. Missouri	MO	N								0	0
27. Montana	MT	N								0	0
28. Nebraska	NE	N								0	0
29. Nevada	NV	N								0	0
30. New Hampshire	NH	N								0	0
31. New Jersey	NJ	N								0	0
32. New Mexico	NM	N								0	0
33. New York	NY	N								0	0
34. North Carolina	NC	N								0	0
35. North Dakota	ND	N								0	0
36. Ohio	OH	N								0	0
37. Oklahoma	OK	N								0	0
38. Oregon	OR	N								0	0
39. Pennsylvania	PA	N								0	0
40. Rhode Island	RI	N								0	0
41. South Carolina	SC	N								0	0
42. South Dakota	SD	N								0	0
43. Tennessee	TN	N								0	0
44. Texas	TX	N								0	0
45. Utah	UT	N								0	0
46. Vermont	VT	N								0	0
47. Virginia	VA	N								0	0
48. Washington	WA	N								0	0
49. West Virginia	WV	N								0	0
50. Wisconsin	WI	N								0	0
51. Wyoming	WY	N								0	0
52. American Samoa	AS	N								0	0
53. Guam	GU	N								0	0
54. Puerto Rico	PR	N								0	0
55. U.S. Virgin Islands	VI	N								0	0
56. Northern Mariana Islands	MP	N								0	0
57. Canada	CAN	N								0	0
58. Aggregate other alien	OT	XXX	0	0	0	0	0	0	0	0	0
59. Subtotal		XXX	0	0	0	0	0	0	0	0	0
60. Reporting entity contributions for employee benefit plans		XXX								0	0
61. Total (direct business)		XXX	0	0	0	0	0	0	0	0	0
DETAILS OF WRITE-INS											
58001.		XXX									
58002.		XXX									
58003.		XXX									
58998. Summary of remaining write-ins for Line 58 from overflow page		XXX	0	0	0	0	0	0	0	0	0
58999. Totals (Lines 58001 through 58003 plus 58998) (Line 58 above)		XXX	0	0	0	0	0	0	0	0	0

(a) Active Status Counts

1. L – Licensed or Chartered – Licensed insurance carrier or domiciled RRG	1	4. Q – Qualified – Qualified or accredited reinsurer	0
2. R – Registered – Non-domiciled RRGs	0	5. N – None of the above – Not allowed to write business in the state.	56
3. E – Eligible – Reporting entities eligible or approved to write surplus lines in the state	0		

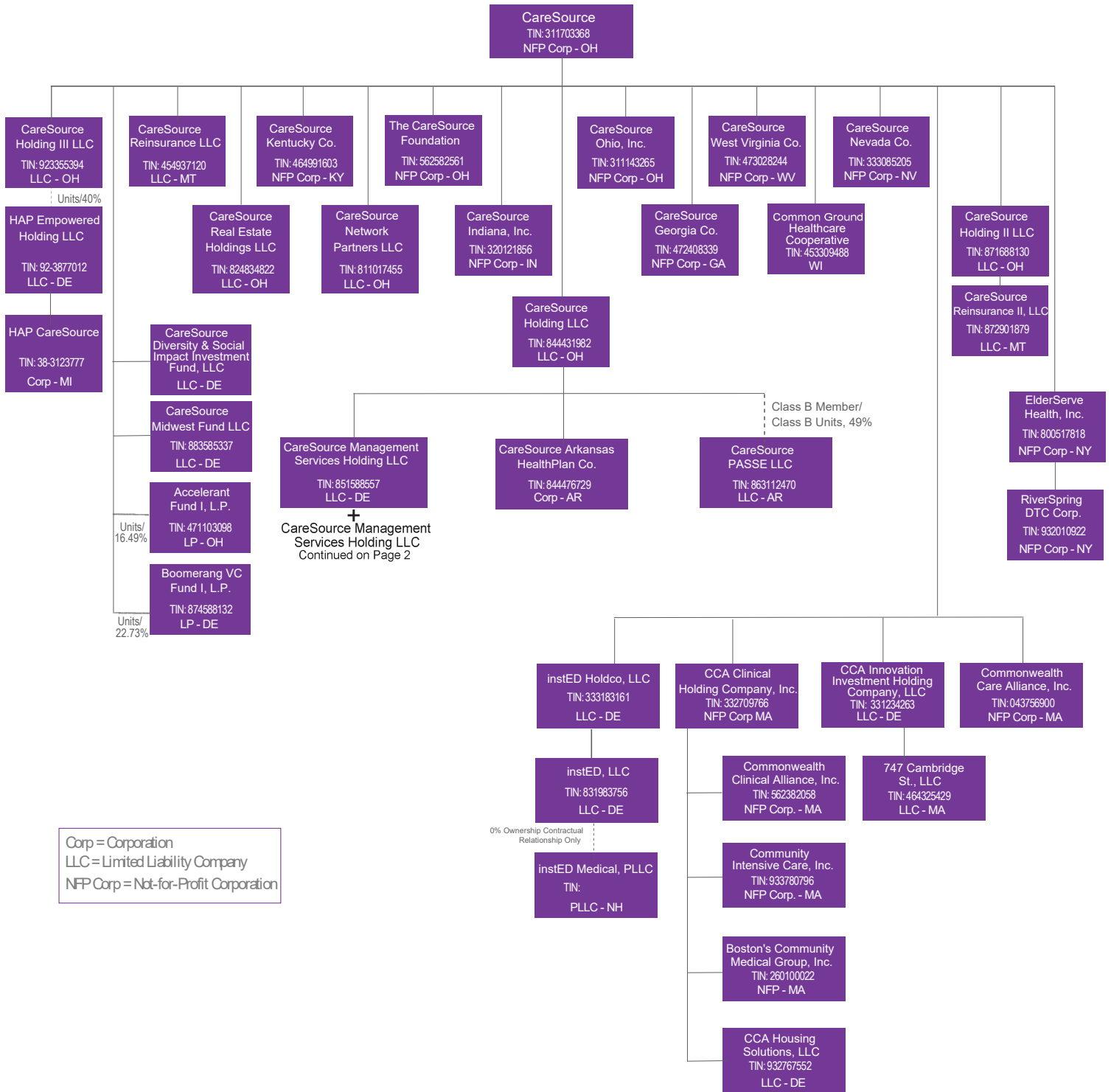
(b) Explanation of basis of allocation by states, premiums by states, etc.

STATEMENT AS OF December 31, 2025 OF THE CareSource Arkansas Health Plan Co.

SCHEDULE Y - INFORMATION CONCERNING ACTIVITIES OF INSURER MEMBERS
OF A HOLDING COMPANY GROUP
PART 1 - ORGANIZATIONAL CHART

CareSource Organization Chart

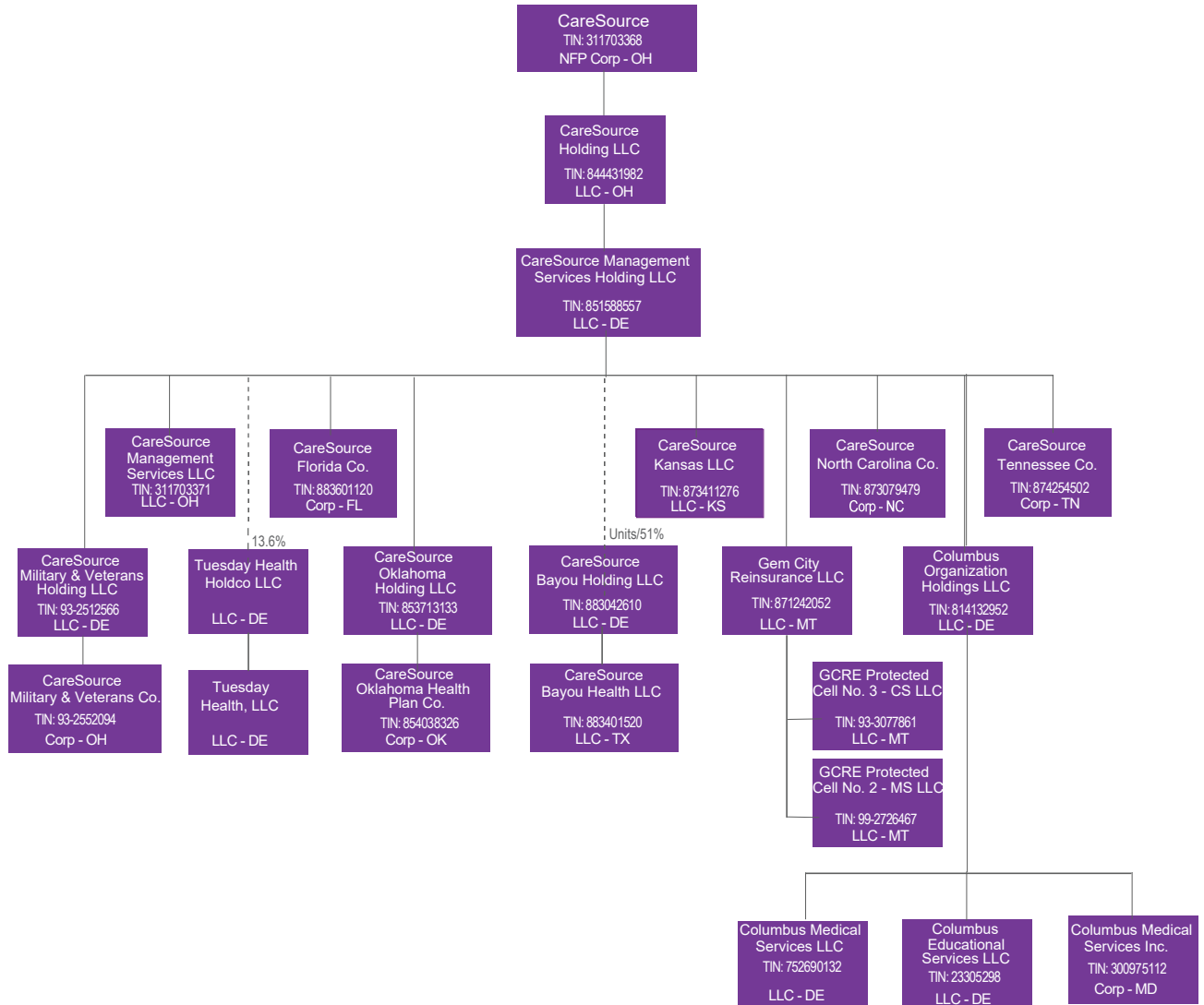
Ownership is 100% unless otherwise indicated.



Confidential & Proprietary

CareSource Organization Chart

Ownership is 100% unless otherwise indicated.



Corp = Corporation
 LLC = Limited Liability Company
 NFP Corp = Not-for-Profit Corporation

Confidential & Proprietary