



# HEALTH QUARTERLY STATEMENT

AS OF MARCH 31, 2026

OF THE CONDITION AND AFFAIRS OF THE

## USAbLe PPO Insurance Company

NAIC Group Code 0876 0876 NAIC Company Code 16750 Employer's ID Number 84-4586338  
(Current) (Prior)

Organized under the Laws of Arkansas, State of Domicile or Port of Entry AR

Country of Domicile United States of America

Licensed as business type: Life, Accident & Health

Is HMO Federally Qualified? Yes [ ] No [ ]

Incorporated/Organized 12/04/2019 Commenced Business 01/01/2021

Statutory Home Office 601 S. Gaines, Little Rock, AR, US 72201  
(Street and Number) (City or Town, State, Country and Zip Code)

Main Administrative Office 601 S. Gaines  
(Street and Number)  
Little Rock, AR, US 72201, 501-378-2000  
(City or Town, State, Country and Zip Code) (Area Code) (Telephone Number)

Mail Address 601 S. Gaines, Little Rock, AR, US 72201  
(Street and Number or P.O. Box) (City or Town, State, Country and Zip Code)

Primary Location of Books and Records 601 S. Gaines  
(Street and Number)  
Little Rock, AR, US 72201, 501-378-2000  
(City or Town, State, Country and Zip Code) (Area Code) (Telephone Number)

Internet Website Address www.arkbluemedicare.com

Statutory Statement Contact Samuel Patterson Wenger, 501-294-5030  
(Name) (Area Code) (Telephone Number)  
SPWenger@arkbluecross.com, 501-378-3258  
(E-mail Address) (FAX Number)

### OFFICERS

President Gray Donald Dillard Secretary Timothy Gerard Gauger  
Treasurer Samuel Patterson Wenger

### OTHER

Calvin Eugene Kellogg, Chairman of the Board

### DIRECTORS OR TRUSTEES

Gray Donald Dillard Calvin Eugene Kellogg Philip Eugene Sherrill  
Matthew Dennis Vannatta Scott Bradley Winter

State of Arkansas SS:  
County of Pulaski

The officers of this reporting entity being duly sworn, each depose and say that they are the described officers of said reporting entity, and that on the reporting period stated above, all of the herein described assets were the absolute property of the said reporting entity, free and clear from any liens or claims thereon, except as herein stated, and that this statement, together with related exhibits, schedules and explanations therein contained, annexed or referred to, is a full and true statement of all the assets and liabilities and of the condition and affairs of the said reporting entity as of the reporting period stated above, and of its income and deductions therefrom for the period ended, and have been completed in accordance with the NAIC Annual Statement Instructions and Accounting Practices and Procedures manual except to the extent that: (1) state law may differ; or, (2) that state rules or regulations require differences in reporting not related to accounting practices and procedures, according to the best of their information, knowledge and belief, respectively. Furthermore, the scope of this attestation by the described officers also includes the related corresponding electronic filing with the NAIC, when required, that is an exact copy (except for formatting differences due to electronic filing) of the enclosed statement. The electronic filing may be requested by various regulators in lieu of or in addition to the enclosed statement.

Gray Donald Dillard  
President

Samuel Patterson Wenger  
Treasurer

Timothy Gerard Gauger  
Secretary

Subscribed and sworn to before me this \_\_\_\_\_ day of \_\_\_\_\_

- a. Is this an original filing? ..... Yes [ X ] No [ ]  
b. If no,  
1. State the amendment number.....  
2. Date filed .....  
3. Number of pages attached.....

STATEMENT AS OF MARCH 31, 2026 OF THE USABLE PPO Insurance Company

**ASSETS**

	Current Statement Date			4 December 31 Prior Year Net Admitted Assets
	1 Assets	2 Nonadmitted Assets	3 Net Admitted Assets (Cols. 1 - 2)	
1. Bonds .....	4,840,365		4,840,365	4,808,690
2. Stocks:				
2.1 Preferred stocks .....			0	0
2.2 Common stocks .....			0	0
3. Mortgage loans on real estate:				
3.1 First liens .....			0	0
3.2 Other than first liens.....			0	0
4. Real estate:				
4.1 Properties occupied by the company (less \$ encumbrances) .....			0	0
4.2 Properties held for the production of income (less \$ ..... encumbrances) .....			0	0
4.3 Properties held for sale (less \$ encumbrances) .....			0	0
5. Cash (\$ ..... 10,874,401 ), cash equivalents (\$ ..... 12,269,008 ) and short-term investments (\$ ..... ) .....	23,143,410		23,143,410	22,022,597
6. Contract loans (including \$ ..... premium notes) .....			0	0
7. Derivatives .....			0	0
8. Other invested assets .....			0	0
9. Receivables for securities .....			0	0
10. Securities lending reinvested collateral assets .....			0	0
11. Aggregate write-ins for invested assets .....	0	0	0	0
12. Subtotals, cash and invested assets (Lines 1 to 11) .....	27,983,775	0	27,983,775	26,831,287
13. Title plants less \$ ..... charged off (for Title insurers only) .....			0	0
14. Investment income due and accrued .....	57,864		57,864	37,500
15. Premiums and considerations:				
15.1 Uncollected premiums and agents' balances in the course of collection .....			0	0
15.2 Deferred premiums, agents' balances and installments booked but deferred and not yet due (including \$ ..... earned but unbilled premiums) .....			0	0
15.3 Accrued retrospective premiums (\$ ..... ) and contracts subject to redetermination (\$ ..... ) .....			0	0
16. Reinsurance:				
16.1 Amounts recoverable from reinsurers .....	(1,290,740)		(1,290,740)	6,876,363
16.2 Funds held by or deposited with reinsured companies .....			0	0
16.3 Other amounts receivable under reinsurance contracts .....			0	0
17. Amounts receivable relating to uninsured plans .....			0	0
18.1 Current federal and foreign income tax recoverable and interest thereon ....			0	0
18.2 Net deferred tax asset .....	(59,213)		(59,213)	0
19. Guaranty funds receivable or on deposit .....			0	0
20. Electronic data processing equipment and software .....			0	0
21. Furniture and equipment, including health care delivery assets (\$ ..... ) .....			0	0
22. Net adjustment in assets and liabilities due to foreign exchange rates .....			0	0
23. Receivables from parent, subsidiaries and affiliates .....			0	0
24. Health care (\$ ..... 3,179,521 ) and other amounts receivable .....			0	0
25. Aggregate write-ins for other-than-invested assets .....	0	0	0	0
26. Total assets excluding Separate Accounts, Segregated Accounts and Protected Cell Accounts (Lines 12 to 25) .....	26,691,686	0	26,691,686	33,745,150
27. From Separate Accounts, Segregated Accounts and Protected Cell Accounts .....			0	0
28. Total (Lines 26 and 27)	26,691,686	0	26,691,686	33,745,150
<b>DETAILS OF WRITE-INS</b>				
1101. ....				
1102. ....				
1103. ....				
1198. Summary of remaining write-ins for Line 11 from overflow page .....	0	0	0	0
1199. Totals (Lines 1101 through 1103 plus 1198)(Line 11 above)	0	0	0	0
2501. ....				
2502. ....				
2503. ....				
2598. Summary of remaining write-ins for Line 25 from overflow page .....	0	0	0	0
2599. Totals (Lines 2501 through 2503 plus 2598)(Line 25 above)	0	0	0	0

**LIABILITIES, CAPITAL AND SURPLUS**

	Current Period			Prior Year
	1 Covered	2 Uncovered	3 Total	4 Total
1. Claims unpaid (less \$ .....2,281,296 reinsurance ceded) .....	0		0	0
2. Accrued medical incentive pool and bonus amounts .....			0	0
3. Unpaid claims adjustment expenses .....			0	0
4. Aggregate health policy reserves, including the liability of \$ .....0 for medical loss ratio rebate per the Public Health Service Act .....			0	0
5. Aggregate life policy reserves .....			0	0
6. Property/casualty unearned premium reserve .....			0	0
7. Aggregate health claim reserves .....			0	0
8. Premiums received in advance .....			0	0
9. General expenses due or accrued .....			0	0
10.1 Current federal and foreign income tax payable and interest thereon (including \$ ..... on realized gains (losses)) .....	263,520		263,520	232,180
10.2 Net deferred tax liability .....			0	59,213
11. Ceded reinsurance premiums payable .....	(988,069)		(988,069)	5,510,218
12. Amounts withheld or retained for the account of others.....			0	0
13. Remittances and items not allocated .....			0	0
14. Borrowed money (including \$ ..... current) and interest thereon \$ ..... (including \$ ..... current) .....			0	0
15. Amounts due to parent, subsidiaries and affiliates .....	1,481,692		1,481,692	2,166,495
16. Derivatives .....			0	0
17. Payable for securities .....			0	0
18. Payable for securities lending .....			0	0
19. Funds held under reinsurance treaties (with \$ ..... authorized reinsurers, \$ ..... unauthorized reinsurers and \$ ..... certified reinsurers).....			0	0
20. Reinsurance in unauthorized and certified (\$ ..... ) companies .....			0	0
21. Net adjustments in assets and liabilities due to foreign exchange rates .....			0	0
22. Liability for amounts held under uninsured plans .....			0	0
23. Aggregate write-ins for other liabilities (including \$ ..... current) .....	0	0	0	0
24. Total liabilities (Lines 1 to 23) .....	757,143	0	757,143	7,968,106
25. Aggregate write-ins for special surplus funds .....	XXX	XXX	0	0
26. Common capital stock .....	XXX	XXX	31,320,610	31,320,610
27. Preferred capital stock .....	XXX	XXX		
28. Gross paid in and contributed surplus .....	XXX	XXX		
29. Surplus notes .....	XXX	XXX		
30. Aggregate write-ins for other-than-special surplus funds .....	XXX	XXX	0	0
31. Unassigned funds (surplus) .....	XXX	XXX	(5,386,069)	(5,543,567)
32. Less treasury stock, at cost:				
32.1 ..... shares common (value included in Line 26 \$ ..... ) .....	XXX	XXX		
32.2 ..... shares preferred (value included in Line 27 \$ ..... ) .....	XXX	XXX		
33. Total capital and surplus (Lines 25 to 31 minus Line 32) .....	XXX	XXX	25,934,542	25,777,043
34. Total liabilities, capital and surplus (Lines 24 and 33)	XXX	XXX	26,691,685	33,745,149
<b>DETAILS OF WRITE-INS</b>				
2301. ....				
2302. ....				
2303. ....				
2398. Summary of remaining write-ins for Line 23 from overflow page .....	0	0	0	0
2399. Totals (Lines 2301 through 2303 plus 2398)(Line 23 above)	0	0	0	0
2501. ....	XXX	XXX		
2502. ....	XXX	XXX		
2503. ....	XXX	XXX		
2598. Summary of remaining write-ins for Line 25 from overflow page .....	XXX	XXX	0	0
2599. Totals (Lines 2501 through 2503 plus 2598)(Line 25 above)	XXX	XXX	0	0
3001. ....	XXX	XXX		
3002. ....	XXX	XXX		
3003. ....	XXX	XXX		
3098. Summary of remaining write-ins for Line 30 from overflow page .....	XXX	XXX	0	0
3099. Totals (Lines 3001 through 3003 plus 3098)(Line 30 above)	XXX	XXX	0	0

**STATEMENT OF REVENUE AND EXPENSES**

	Current Year To Date		Prior Year To Date	Prior Year Ended December 31
	1 Uncovered	2 Total	3 Total	4 Total
1. Member Months .....	XXX	0	25,517	102,549
2. Net premium income ( including \$ ..... non-health premium income).....	XXX			0
3. Change in unearned premium reserves and reserve for rate credits.....	XXX			0
4. Fee-for-service (net of \$ ..... medical expenses) .....	XXX			0
5. Risk revenue .....	XXX			0
6. Aggregate write-ins for other health care related revenues .....	XXX	0	0	0
7. Aggregate write-ins for other non-health revenues .....	XXX	0	0	0
8. Total revenues (Lines 2 to 7) .....	XXX	0	0	0
<b>Hospital and Medical:</b>				
9. Hospital/medical benefits .....		(2,275,247)	18,727,433	74,300,626
10. Other professional services .....		(94,364)	460,394	1,768,185
11. Outside referrals .....		0		0
12. Emergency room and out-of-area .....		545,231	882,947	3,702,235
13. Prescription drugs .....		269,402	6,546,481	31,824,560
14. Aggregate write-ins for other hospital and medical .....	0	0	0	0
15. Incentive pool, withhold adjustments and bonus amounts .....		0	0	0
16. Subtotal (Lines 9 to 15) .....	0	(1,554,978)	26,617,254	111,595,606
<b>Less:</b>				
17. Net reinsurance recoveries .....		(1,554,979)	26,617,254	111,595,606
18. Total hospital and medical (Lines 16 minus 17) .....	0	1	0	0
19. Non-health claims (net) .....				
20. Claims adjustment expenses, including \$ ..... cost containment expenses .....				0
21. General administrative expenses .....				0
22. Increase in reserves for life and accident and health contracts (including \$ ..... increase in reserves for life only) .				0
23. Total underwriting deductions (Lines 18 through 22).....	0	1	0	0
24. Net underwriting gain or (loss) (Lines 8 minus 23) .....	XXX	(1)	0	0
25. Net investment income earned .....		188,839	389,832	1,554,006
26. Net realized capital gains (losses) less capital gains tax of \$ .....				(309,057)
27. Net investment gains (losses) (Lines 25 plus 26) .....	0	188,839	389,832	1,244,949
28. Net gain or (loss) from agents' or premium balances charged off [(amount recovered \$ ..... ) (amount charged off \$ ..... )].....				
29. Aggregate write-ins for other income or expenses .....	0	0	0	0
30. Net income or (loss) after capital gains tax and before all other federal income taxes (Lines 24 plus 27 plus 28 plus 29) .....	XXX	188,838	389,832	1,244,949
31. Federal and foreign income taxes incurred .....	XXX	31,340	81,865	231,336
32. Net income (loss) (Lines 30 minus 31) .....	XXX	157,498	307,967	1,013,613
<b>DETAILS OF WRITE-INS</b>				
0601. ....	XXX			
0602. ....	XXX			
0603. ....	XXX			
0698. Summary of remaining write-ins for Line 6 from overflow page .....	XXX	0	0	0
0699. Totals (Lines 0601 through 0603 plus 0698)(Line 6 above) .....	XXX	0	0	0
0701. ....	XXX			
0702. ....	XXX			
0703. ....	XXX			
0798. Summary of remaining write-ins for Line 7 from overflow page .....	XXX	0	0	0
0799. Totals (Lines 0701 through 0703 plus 0798)(Line 7 above) .....	XXX	0	0	0
1401. ....				
1402. ....				
1403. ....				
1498. Summary of remaining write-ins for Line 14 from overflow page .....	0	0	0	0
1499. Totals (Lines 1401 through 1403 plus 1498)(Line 14 above) .....	0	0	0	0
2901. ....				
2902. ....				
2903. ....				
2998. Summary of remaining write-ins for Line 29 from overflow page .....	0	0	0	0
2999. Totals (Lines 2901 through 2903 plus 2998)(Line 29 above) .....	0	0	0	0

**STATEMENT OF REVENUE AND EXPENSES (Continued)**

	1 Current Year to Date	2 Prior Year to Date	3 Prior Year Ended December 31
<b>CAPITAL AND SURPLUS ACCOUNT</b>			
33. Capital and surplus prior reporting year.....	25,777,044	39,793,542	39,793,542
34. Net income or (loss) from Line 32.....	157,498	307,967	1,013,613
35. Change in valuation basis of aggregate policy and claim reserves.....			
36. Change in net unrealized capital gains (losses) less capital gains tax of \$.....			
37. Change in net unrealized foreign exchange capital gain or (loss).....			
38. Change in net deferred income tax.....			(30,111)
39. Change in nonadmitted assets.....			
40. Change in unauthorized and certified reinsurance.....	0	0	0
41. Change in treasury stock.....	0	0	0
42. Change in surplus notes.....	0	0	0
43. Cumulative effect of changes in accounting principles.....			
44. Capital Changes:			
44.1 Paid in.....			(15,000,000)
44.2 Transferred from surplus (stock dividend).....	0	0	0
44.3 Transferred to surplus.....			
45. Surplus adjustments:			
45.1 Paid in.....	0	0	0
45.2 Transferred to capital (stock dividend).....			
45.3 Transferred from capital.....			
46. Dividends to stockholders.....			
47. Aggregate write-ins for gains or (losses) in surplus.....	0	0	0
48. Net change in capital & surplus (Lines 34 to 47).....	157,498	307,967	(14,016,498)
49. Capital and surplus end of reporting period (Line 33 plus 48)	25,934,542	40,101,509	25,777,044
<b>DETAILS OF WRITE-INS</b>			
4701. ....			0
4702. ....			
4703. ....			
4798. Summary of remaining write-ins for Line 47 from overflow page.....	0	0	0
4799. Totals (Lines 4701 through 4703 plus 4798)(Line 47 above)	0	0	0

STATEMENT AS OF MARCH 31, 2026 OF THE USABLE PPO Insurance Company

**CASH FLOW**

	1 Current Year To Date	2 Prior Year To Date	3 Prior Year Ended December 31
<b>Cash from Operations</b>			
1. Premiums collected net of reinsurance .....	(6,498,287)	7,352,860	(1,823,043)
2. Net investment income .....	136,800	241,646	1,469,661
3. Miscellaneous income .....	0	0	0
4. Total (Lines 1 to 3) .....	(6,361,487)	7,594,505	(353,382)
5. Benefit and loss related payments .....	(8,167,102)	7,123,271	738,958
6. Net transfers to Separate Accounts, Segregated Accounts and Protected Cell Accounts .....			
7. Commissions, expenses paid and aggregate write-ins for deductions .....	0	0	0
8. Dividends paid to policyholders .....			
9. Federal and foreign income taxes paid (recovered) net of \$ ..... tax on capital gains (losses) .....	0	0	296,463
10. Total (Lines 5 through 9) .....	(8,167,102)	7,123,271	1,035,421
11. Net cash from operations (Line 4 minus Line 10) .....	1,805,615	471,234	(1,388,803)
<b>Cash from Investments</b>			
12. Proceeds from investments sold, matured or repaid:			
12.1 Bonds .....	0	0	19,660,100
12.2 Stocks .....	0	0	0
12.3 Mortgage loans .....	0	0	0
12.4 Real estate .....	0	0	0
12.5 Other invested assets .....	0	0	0
12.6 Net gains or (losses) on cash, cash equivalents and short-term investments .....	0	0	0
12.7 Miscellaneous proceeds .....	0	0	0
12.8 Total investment proceeds (Lines 12.1 to 12.7) .....	0	0	19,660,100
13. Cost of investments acquired (long-term only):			
13.1 Bonds .....	0	0	0
13.2 Stocks .....	0	0	0
13.3 Mortgage loans .....	0	0	0
13.4 Real estate .....	0	0	0
13.5 Other invested assets .....	0	0	0
13.6 Miscellaneous applications .....	0	0	0
13.7 Total investments acquired (Lines 13.1 to 13.6) .....	0	0	0
14. Net increase/(decrease) in contract loans and premium notes .....	0	0	0
15. Net cash from investments (Line 12.8 minus Line 13.7 and Line 14) .....	0	0	19,660,100
<b>Cash from Financing and Miscellaneous Sources</b>			
16. Cash provided (applied):			
16.1 Surplus notes, capital notes .....	0	0	0
16.2 Capital and paid in surplus, less treasury stock .....	0	0	(15,000,000)
16.3 Borrowed funds .....	0	0	0
16.4 Net deposits on deposit-type contracts and other insurance liabilities .....	0	0	0
16.5 Dividends to stockholders .....	0	0	0
16.6 Other cash provided (applied) .....	(684,803)	2,623,375	814,571
17. Net cash from financing and miscellaneous sources (Line 16.1 through Line 16.4 minus Line 16.5 plus Line 16.6) .....	(684,803)	2,623,375	(14,185,429)
<b>RECONCILIATION OF CASH, CASH EQUIVALENTS AND SHORT-TERM INVESTMENTS</b>			
18. Net change in cash, cash equivalents and short-term investments (Line 11, plus Lines 15 and 17) .....	1,120,812	3,094,609	4,085,868
19. Cash, cash equivalents and short-term investments:			
19.1 Beginning of year .....	22,022,599	17,936,730	17,936,730
19.2 End of period (Line 18 plus Line 19.1) .....	23,143,411	21,031,339	22,022,599

Note: Supplemental disclosures of cash flow information for non-cash transactions:

--	--	--	--

STATEMENT AS OF MARCH 31, 2026 OF THE USABLE PPO Insurance Company

**EXHIBIT OF PREMIUMS, ENROLLMENT AND UTILIZATION**

	1 Total	Comprehensive (Hospital & Medical)		4 Medicare Supplement	5 Vision Only	6 Dental Only	7 Federal Employees Health Benefits Plan	8 Title XVIII Medicare	9 Title XIX Medicaid	10 Credit A&H	11 Disability Income	12 Long-Term Care	13 Other Health	14 Other Non-Health
		2 Individual	3 Group											
<b>Total Members at end of:</b>														
1. Prior year .....	8,519	0	0	0	0	0	0	8,519	0	0	0	0	0	0
2. First quarter .....	0							0						
3. Second quarter .....	0													
4. Third quarter .....	0													
5. Current year	0													
6. Current year member months	0							0						
<b>Total Member Ambulatory Encounters for Period:</b>														
7. Physician .....	0													
8. Non-physician .....	0													
9. Total	0	0	0	0	0	0	0	0	0	0	0	0	0	0
10. Hospital patient days incurred	0							0						
11. Number of inpatient admissions	0							0						
12. Health premiums written (a) .....	195,411							195,411						
13. Life premiums direct .....	0													
14. Property/casualty premiums written .....	0													
15. Health premiums earned.....	245,468							245,468						
16. Property/casualty premiums earned	0													
17. Amount paid for provision of health care services.....	9,381,488							9,381,488						
18. Amount incurred for provision of health care services	(1,554,979)							(1,554,979)						

(a) For health premiums written: amount of Medicare Title XVIII exempt from state taxes or fees \$ ..... 195,411



## UNDERWRITING AND INVESTMENT EXHIBIT

### ANALYSIS OF CLAIMS UNPAID - PRIOR YEAR - NET OF REINSURANCE

Line of Business	Claims Paid Year to Date		Liability End of Current Quarter		5 Claims Incurred in Prior Years (Columns 1 + 3)	6 Estimated Claim Reserve and Claim Liability December 31 of Prior Year
	1 On Claims Incurred Prior to January 1 of Current Year	2 On Claims Incurred During the Year	3 On Claims Unpaid Dec. 31 of Prior Year	4 On Claims Incurred During the Year		
1. Comprehensive (hospital and medical) individual .....					0	0
2. Comprehensive (hospital and medical) group .....					0	0
3. Medicare Supplement .....					0	0
4. Vision only .....					0	0
5. Dental only .....					0	0
6. Federal Employees Health Benefits Plan .....					0	0
7. Title XVIII - Medicare .....					0	0
8. Title XIX - Medicaid .....					0	0
9. Credit A&H .....					0	0
10. Disability income .....					0	0
11. Long-term care .....					0	0
12. Other health .....					0	0
13. Health subtotal (Lines 1 to 12) .....	0	0	0	0	0	0
14. Health care receivables (a) .....					0	0
15. Other non-health .....					0	0
16. Medical incentive pools and bonus amounts .....					0	0
17. Totals (Lines 13 - 14 + 15 + 16)	0	0	0	0	0	0

(a) Excludes \$ ..... loans or advances to providers not yet expensed.

## NOTES TO FINANCIAL STATEMENTS

**NOTE 1 Summary of Significant Accounting Policies and Going Concern****A. Accounting Practices**

The financial statements of USABLE PPO Insurance Company, are presented on the basis of accounting practices prescribed or permitted by the Arkansas Insurance Department.

The state of Arkansas requires insurance companies domiciled in the state of Arkansas to prepare their statutory financial statements in accordance with the National Association of Insurance Commissioners' (NAIC) Accounting Practices and Procedures manual subject to any deviations prescribed or permitted by the Arkansas Insurance Department. The Company does not have any permitted practices.

Reconciliation of net income and policyholders' surplus between the amounts reported in the accompanying financial statements and NAIC SAP follow:

	SSAP #	F/S Page	F/S Line #		2026		2025
NET INCOME							
(1) State basis (Page 4, Line 32, Columns 2 & 4)	XXX	XXX	XXX	\$	157,498	\$	1,013,613
(2) State Prescribed Practices that are an increase/ (decrease) from NAIC SAP:							
(3) State Permitted Practices that are an increase/(decrease) from NAIC SAP:							
(4) NAIC SAP (1-2-3=4)	XXX	XXX	XXX	\$	157,498	\$	1,013,613
SURPLUS							
(5) State basis (Page 3, Line 33, Columns 3 & 4)	XXX	XXX	XXX	\$	25,934,542	\$	25,777,043
(6) State Prescribed Practices that are an increase/(decrease) from NAIC SAP:							
(7) State Permitted Practices that are an increase/(decrease) from NAIC SAP:							
(8) NAIC SAP (5-6-7=8)	XXX	XXX	XXX	\$	25,934,542	\$	25,777,043

**B. Use of Estimates in the Preparation of the Financial Statements**

The preparation of financial statements in conformity with Statutory Accounting Principles requires management to make estimates and assumptions that affect the reported amounts of assets and liabilities. It also requires disclosure of contingent assets and liabilities at the date of the financial statements and the reported amounts of revenue and expenses during the period. Actual results could differ from those estimates.

## NOTES TO FINANCIAL STATEMENTS

### C. Accounting Policy

Health premiums are earned ratably over the terms of the related insurance and reinsurance contracts or policies. Expenses incurred in connection with acquiring new insurance business are charged to operations as incurred.

In addition, the Company uses the following accounting policies:

- (1) **Basis for Short-Term Investments**  
Short-term investments are stated at amortized cost.
- (2) **Basis for Bonds, Mandatory Convertible Securities, SVO-Identified Investments and Amortization Method**  
Bonds not backed by other loans are stated at amortized cost using the effective interest method.
- (3) **Basis for Common Stocks**  
The Company does not have common stock.
- (4) **Basis for Preferred Stocks**  
The Company does not have preferred stock.
- (5) **Basis for Mortgage Loans**  
The Company does not have mortgage loans.
- (6) **Basis for Asset-Backed Securities and Adjustment Methodology**  
The Company does not have asset-backed securities.
- (7) **Accounting Policies for Investments in Subsidiaries, Controlled and Affiliated Entities**  
The Company does not have any investments in subsidiaries, controlled, or affiliated entities.
- (8) **Accounting Policies for Investments in Joint Ventures, Partnerships and Limited Liability Entities**  
The Company does not have any investments in joint ventures, partnerships and limited liabilities entities.
- (9) **Accounting Policies for Derivatives**  
The Company does not have any derivatives.
- (10) **Anticipated Investment Income Used in Premium Deficiency Calculation**  
The Company includes anticipated investment income as a factor in the premium deficiency calculation.
- (11) **Management's Policies and Methodologies for Estimating Liabilities for Losses and Loss/Claim Adjustment Expenses**  
When setting reserves, the Company employs the five methods that are described below. Based on the estimates of these methods and also retrospective considerations, the Company sets a best estimate and then an explicit margin is added to ensure that the estimate is sufficient. The average of the methods, as well as the spread of the estimates, is also considered when setting the respective liabilities. Aggregate liabilities are tested against other aggregate estimation methods to check for reasonableness, and any additional margin or adjustments are made.
  - (a) **Aggregate Method:** 12 months of paid claims are subtracted from 12 months of estimated incurred claims to get the liability estimate.
  - (b) **3 Month Average Method:** For the base liability estimate, the average liability of the third, fourth, and fifth month prior to the current month is used. Adjustments are made for trend, membership change, and backlog to determine the current month's estimate of liability.
  - (c) **Previous Year's IBNR Method:** This method is similar to the Three Month Average Method, except that the actual reserve from one year ago is used as the base estimate of liability. This is projected forward using adjustments for trend, membership change, and backlog.
  - (d) **CY Lag Method:** This method calculates completion factors by incurred year. Completion factors used for the current year are based on the previous year's experience. Completion factors for the most recent 3 years are set manually.
  - (e) **12 Month CF Method:** This method is identical to the CY Lag Method, except that historical completion factors are based on 12 months of rolling data.
- (12) **Changes in the Capitalization Policy and Predefined Thresholds from Prior Period**  
The Company has not modified its capitalization policy from the prior period.
- (13) **Method Used to Estimate Pharmaceutical Rebate Receivables**  
Pharmacy rebate receivables are estimated based upon the following methods: prior quarter's invoiced amounts, estimates provided by the Pharmacy Benefit Manager, or estimates using a percentage of year-to-date estimates from the Pharmacy Benefit Manager to year-to-date allowed claims.

### D. Going Concern

Management has evaluated the Company's ability to continue as a going concern as of March 31, 2026. Management has concluded that there is not substantial doubt that the Company can continue as a going concern, therefore, there are no policies in place to alleviate such situations.

#### NOTE 2 Accounting Changes and Corrections of Errors

Not Applicable - There were no accounting changes or corrections of errors during the reporting periods.

#### NOTE 3 Business Combinations and Goodwill

Not Applicable - The Company has not entered into any business combination transactions and does not have a goodwill asset as a result of business combinations or assumption reinsurance transactions.

#### NOTE 4 Discontinued Operations

Not Applicable - The Company does not have a discontinued operation that has been disposed of or that is classified as held for sale under SSAP No. 24 - Discontinued Operations and Unusual or Infrequent Items.



STATEMENT AS OF MARCH 31, 2026 OF THE USABLE PPO Insurance Company  
**NOTES TO FINANCIAL STATEMENTS**

- I. Reverse Repurchase Agreements Transactions Accounted for as a Sale  
 Not Applicable - The Company has no repurchase agreements or reverse repurchase agreements at this time. No change from prior year-end 2025.
- J. Real Estate  
 Not applicable - The Company has no investments in real estate. No significant changes from prior year-end 2025.
- L. Restricted Assets

1. Restricted Assets (Including Pledged)

Restricted Asset Category	1 Total Gross (Admitted & Non- admitted) Restricted from Current Year	2 Total Gross (Admitted & Non- admitted) Restricted from Prior Year	3 Increase/ (Decrease) (1 minus 2)	4 Total Current Year Non- admitted Restricted	5 Total Current Year Admitted Restricted (1 minus 4)	6 Gross (Admitted & Non- admitted) Restricted to Total Assets (a)	7 Admitted Restricted to Total Admitted Assets (b)
a. Subject to contractual obligation for which liability is not shown			\$ -		\$ -	0.000%	0.000%
b. Collateral held under security lending agreements			\$ -		\$ -	0.000%	0.000%
c. Subject to repurchase agreements			\$ -		\$ -	0.000%	0.000%
d. Subject to reverse repurchase agreements			\$ -		\$ -	0.000%	0.000%
e. Subject to dollar repurchase agreements			\$ -		\$ -	0.000%	0.000%
f. Subject to dollar reverse repurchase agreements			\$ -		\$ -	0.000%	0.000%
g. Placed under option contracts			\$ -		\$ -	0.000%	0.000%
h. Letter stock or securities restricted as to sale - excluding FHLB capital stock			\$ -		\$ -	0.000%	0.000%
i. FHLB capital stock			\$ -		\$ -	0.000%	0.000%
j. On deposit with states	\$ 124,780	\$ 124,747	\$ 33		\$ 124,780	0.467%	0.467%
k. On deposit with other regulatory bodies			\$ -		\$ -	0.000%	0.000%
l. Pledged collateral to FHLB (including assets backing funding agreements)			\$ -		\$ -	0.000%	0.000%
m. Pledged as collateral not captured in other categories			\$ -		\$ -	0.000%	0.000%
n. Other restricted assets			\$ -		\$ -	0.000%	0.000%
o. Collateral assets received and on balance sheet			\$ -		\$ -	0.000%	0.000%
p. Assets held under modco reinsurance agreements			\$ -		\$ -	0.000%	0.000%
q. Assets held under funds withheld reinsurance agreements			\$ -		\$ -	0.000%	0.000%
r. Total restricted assets (Sum of a through q)	\$ 124,780	\$ 124,747	\$ 33	\$ -	\$ 124,780	0.467%	0.467%

Restricted Asset Category	8 Amount Reported in General Interrogatories	9 Difference from Note and GI	10 GI Ref
a. Subject to contractual obligation for which liability is not shown	XXX	XXX	XXX
b. Collateral held under security lending agreements			25.04 + 25.05
c. Subject to repurchase agreements			26.21
d. Subject to reverse repurchase agreements			26.22
e. Subject to dollar repurchase agreements			26.23
f. Subject to dollar reverse repurchase agreements			26.24
g. Placed under option contracts			26.25
h. Letter stock or securities restricted as to sale - excluding FHLB capital stock			26.26
i. FHLB capital stock			26.27
j. On deposit with states			26.28
k. On deposit with other regulatory bodies			26.29
l. Pledged collateral to FHLB (including assets backing funding agreements)			26.31
m. Pledged as collateral not captured in other categories			26.30
n. Other restricted assets			26.32
o. Collateral assets received and on balance sheet	XXX	XXX	XXX
p. Assets held under modco reinsurance agreements	XXX	XXX	XXX
q. Assets held under funds withheld reinsurance agreements	XXX	XXX	XXX
r. Total restricted assets (Sum of a through q)	XXX	XXX	XXX

(a) Column 1 divided by Asset Page, Column 1, Line 28  
 (b) Column 5 divided by Asset Page, Column 3, Line 28

## NOTES TO FINANCIAL STATEMENTS

GI Reference	Difference between Note and GI (Per Column 9 above)	Explanation
25.04 + 25.05	\$ -	
26.21	\$ -	
26.22	\$ -	
26.23	\$ -	
26.24	\$ -	
26.25	\$ -	
26.26	\$ -	
26.27	\$ -	
26.28	\$ -	
26.29	\$ -	
26.31	\$ -	
26.30	\$ -	
26.32	\$ -	

2. Detail of Assets Pledged as Collateral Not Captured in Other Categories (Contracts that Share Similar Characteristics, Such as Reinsurance (excluding Modco/FWH) and Derivatives, Are Reported in the Aggregate)

Description of Assets	1 Total Gross (Admitted & Non-admitted) Restricted from Current Year	2 Total Gross (Admitted & Non-admitted) Restricted from Prior Year	3 Increase/ (Decrease) (1 minus 2)	4 Total Current Year Admitted Restricted	5 Gross (Admitted & Non-admitted) Restricted to Total Assets	6 Admitted Restricted to Total Admitted Assets
Total (a)	\$ -	\$ -	\$ -	\$ -	0.000%	0.000%
Amount of Total pledged under derivative contracts			\$ -	\$ -	XXX	XXX
Total Excluding Derivative Collateral (Total minus Amt of Total pledged under derivative contracts)			\$ -	\$ -	XXX	XXX

(a) Total Line for Columns 1 through 3 should equal 5L(1)m Columns 1 through 3 respectively and Total Line for Column 4 should equal 5L(1)m Column 5.

3. Detail of Other Restricted Assets (Contracts that Share Similar Characteristics, Such as Reinsurance (exclude Modco/FWH) and Derivatives, Are Reported in the Aggregate)

Description of Assets	1 Total Gross (Admitted & Non-admitted) Restricted from Current Year	2 Total Gross (Admitted & Non-admitted) Restricted from Prior Year	3 Increase/ (Decrease) (1 minus 2)	4 Total Current Year Admitted Restricted	5 Gross (Admitted & Non-admitted) Restricted to Total Assets	6 Admitted Restricted to Total Admitted Assets
Total (a)	\$ -	\$ -	\$ -	\$ -	XXX	XXX

(a) Total Line for Columns 1 through 3 should equal 5L(1)n Columns 1 through 3 respectively and Total Line for Column 4 should equal 5L(1)n Column 5.

4. Collateral Received and Assets Held under Modco/Funds Withheld (FWH) Reinsurance Agreements Reflected as Assets Within the Reporting Entity's Financial Statements

Assets	1 (BACV) Collateral ***	2 (BACV) Modco ****	3 (BACV) FWH *****	4 Fair Value Collateral	5 Fair Value Modco	6 Fair Value FWH	7 % of BACV to Total Assets (Admitted and Nonadmitted)*	8 % of BACV to Total Admitted Assets **
a. Cash, Cash Equivalents and Short-Term Investments							0.000%	0.000%
b. Schedule D, Part 1, Section 1							0.000%	0.000%
c. Schedule D, Part 1, Section 2							0.000%	0.000%
d. Schedule D, Part 2, Section 1							0.000%	0.000%
e. Schedule D, Part 2, Section 2							0.000%	0.000%
f. Schedule B							0.000%	0.000%
g. Schedule A							0.000%	0.000%
h. Schedule BA, Part 1							0.000%	0.000%
i. Schedule DL, Part 1							0.000%	0.000%
j. Other							0.000%	0.000%
k. Total Assets (a+b+c+d+e+f+g+h+i+j)	\$ -	\$ -	\$ -	\$ -	\$ -	\$ -	0.000%	0.000%
l. Percentage to Total FWH Assets (including Modco)	XXX	XXX	XXX	XXX	XXX	XXX	XXX	XXX

\* Sum of Columns 1, 2, and 3 divided by Asset Page, Line 26 (Column 1)

\*\* Sum of Columns 1, 2, and 3 divided by Asset Page, Line 26 (Column 3)

\*\*\* k (Collateral BACV) should equal Note 5L(1) Column 1, Line o

\*\*\*\* k (Modco BACV) should equal Note 5L(1) Column 1, Line p

\*\*\*\*\* k (FWH BACV) should equal Note 5L(1) Column 1, Line q

## NOTES TO FINANCIAL STATEMENTS

Assets	9	10	11	12	13	14	15
	Book/Adjusted Carrying Value (BACV)	Related Party Code					
	FWH Including Modco	1	2	3	4	5	6
a. Cash, Cash Equivalents and Short-Term Investments	\$ -						
b. Schedule D, Part 1, Section 1	\$ -						
c. Schedule D, Part 1, Section 2	\$ -						
d. Schedule D, Part 2, Section 1	\$ -						
e. Schedule D, Part 2, Section 2	\$ -						
f. Schedule B	\$ -						
g. Schedule A	\$ -						
h. Schedule BA, Part 1	\$ -						
i. Schedule DL, Part 1	\$ -						
j. Other	\$ -						
k. Total Assets (a+b+c+d+e+f+g+h+i+j)	\$ -	\$ -	\$ -	\$ -	\$ -	\$ -	\$ -
l. Percentage to Total FWH Assets (including Modco)	0.000%	0.000%	0.000%	0.000%	0.000%	0.000%	0.000%

	1	2
	Amount	% of Liability to Total Liabilities #
m. Recognized Obligation to Return Collateral Asset		0.000%
n. Recognized Obligation for Modco assets		0.000%
o. Recognized Obligation for FWH (excluding Modco) assets		0.000%
# m + n + o = Column 1 divided by Liability Page, Line 24 (Column 3)		

5. Disclose whether any of the assets held as collateral or under modified coinsurance (Modco) or funds withheld reinsurance (FWH) agreements have been pledged for another purpose specific to the insurance reporting entity (not for the benefit of the reinsurer). For example, if the insurance reporting entity has used these assets as the collateral in a securities lending agreement, a repo transaction, pledged as collateral to the FHLB, etc. (For Modco/FWH assets, items pledged on behalf of the reinsurer shall not be captured.)

	Collateral Held	Modco	FWH
a. Securities Lending			
b. Repo / repurchase Agreements			
c. Placed under option contracts			
d. On deposit with states			
e. On deposit with other regulatory bodies			
f. Pledged as collateral to FHLB (including assets backing funding agreements)			
g. Pledged as collateral not captured in other categories			
h. Total (a+b+c+d+e+f+g)	\$ -	\$ -	\$ -

- M. Working Capital Finance Investments  
Not Applicable - The Company has no Working Capital Finance Investments (WCFI) at this time. No change from prior year-end 2025.
- N. Offsetting and Netting of Assets and Liabilities  
Not Applicable - The Company does not have assets or liabilities with a valid right to offset subject to SSAP No. 64. No change from prior year-end 2025.
- O. 5GI Securities  
Not Applicable - The Company does not hold any 5GI securities at this time. No change from prior year-end 2025.
- P. Short Sales  
Not Applicable - The Company did not have any short sales during the reporting periods. No change from prior year-end 2025.
- Q. Prepayment Penalty and Acceleration Fees

	<u>General Account</u>
1. Number of CUSIPs	0
2. Aggregate Amount of Investment Income	\$ -

- R. Reporting Entity's Share of Cash Pool by Asset Type  
Not Applicable - The Company does not participate in a cash pool. No change from prior year-end 2025.
- S. Aggregate Collateral Loans by Qualifying Investment Collateral  
Not Applicable - The Company does not have any aggregate collateral loans at this time. No change from prior year-end 2025.

**NOTE 6 Joint Ventures, Partnerships and Limited Liability Companies**

Not Applicable - The Company does not have any investments in joint ventures, partnerships and limited liabilities entities. No change from prior year-end 2025.

## NOTES TO FINANCIAL STATEMENTS

**NOTE 7 Investment Income**

- A. The bases, by category of investment income, for excluding (nonadmitting) any investment income due and accrued: All investment income due and accrued is included in investment income.
- B. The total amount excluded was -0- for the year-to-date 2026 and 2025.
- C. The gross, nonadmitted and admitted amounts for interest income due and accrued.

	Amount
Interest Income Due and Accrued	
1. Gross	\$ 57,864
2. Nonadmitted	\$ -
3. Admitted	\$ 57,864

- D. The aggregate deferred interest.

	Amount
Aggregate Deferred Interest	\$ -

- E. The cumulative amounts of paid-in-kind (PIK) interest included in the current principal balance.

	Amount
Cumulative amounts of PIK interest included in the current principal balance	\$ -

**NOTE 8 Derivative Instruments**

Not Applicable - The Company did not have any derivative instruments. No change from prior year-end 2025.

**NOTE 9 Income Taxes**

No significant changes from prior year-end 2025.

**NOTE 10 Information Concerning Parent, Subsidiaries, Affiliates and Other Related Parties**

No significant changes from prior year-end 2025.

**NOTE 11 Debt**

- A. Debt Including Capital Notes  
Not Applicable - The Company has no debt including capital notes.
- B. FHLB (Federal Home Loan Bank) Agreements  
Not Applicable - The Company had no FHLB agreements.  
(1) Nature of the Agreement, Type of Borrowing (advances, lines of credit, borrowed money, etc) and Use of the Funding
- C. Unused commitments and lines of credit for financing arrangements:  
Not Applicable - The Company had no unused commitments and lines of credit for financing arrangements.

**NOTE 12 Retirement Plans, Deferred Compensation, Postemployment Benefits and Compensated Absences and Other Postretirement Benefit Plans**

Not Applicable - The Company does not have any employees.

**NOTE 13 Capital and Surplus, Dividend Restrictions and Quasi-Reorganizations**

No significant changes from prior year-end 2025.

**NOTE 14 Liabilities, Contingencies and Assessments**

No significant changes from prior year-end 2025.

**NOTE 15 Leases**

No significant changes from prior year-end 2025.

**NOTE 16 Information About Financial Instruments With Off-Balance Sheet Risk and Financial Instruments With Concentrations of Credit Risk**

Not Applicable - The Company did not have any financial instruments with off-balance sheet risk or financial instruments with concentration of credit risk during the reporting periods. No change from the prior year-end 2025.

**NOTE 17 Sale, Transfer and Servicing of Financial Assets and Extinguishments of Liabilities**

Not Applicable - The Company did not engage in these types of transactions during the reporting periods. No change from prior year-end 2025.

**NOTE 18 Gain or Loss to the Reporting Entity from Uninsured Plans and the Uninsured Portion of Partially Insured Plans**

No significant changes from prior year-end 2025.

**NOTE 19 Direct Premium Written/Produced by Managing General Agents/Third Party Administrators**

Not Applicable - The Company does not currently have any direct premium written/produced by managing general agents or third party administrators. No significant changes from prior year-end 2025.

**NOTE 20 Fair Value Measurements**

A.

**(1) Fair Value Measurements at Reporting Date**

Description for each class of asset or liability	(Level 1)	(Level 2)	(Level 3)	Net Asset Value (NAV)	Total
a. Assets at fair value					
Exempt MM Mutual Fund		\$ 12,269,008			\$ 12,269,008
<b>Total assets at fair value/NAV</b>	\$ -	\$ 12,269,008	\$ -	\$ -	\$ 12,269,008

Description for each class of asset or liability	(Level 1)	(Level 2)	(Level 3)	Net Asset Value (NAV)	Total
b. Liabilities at fair value					
<b>Total liabilities at fair value</b>	\$ -	\$ -	\$ -	\$ -	\$ -

## NOTES TO FINANCIAL STATEMENTS

## (2) Fair Value Measurements in (Level 3) of the Fair Value hierarchy

Description	Ending Balance as of Prior Quarter End	Transfers into Level 3	Transfers out of Level 3	Total gains and (losses) included in Net Income	Total gains and (losses) included in Surplus	Purchases	Issuances	Sales	Settlements	Ending Balance for Current Quarter End
a. Assets										
<b>Total Assets</b>	\$ -	\$ -	\$ -	\$ -	\$ -	\$ -	\$ -	\$ -	\$ -	\$ -

Description	Ending Balance as of Prior Quarter End	Transfers into Level 3	Transfers out of Level 3	Total gains and (losses) included in Net Income	Total gains and (losses) included in Surplus	Purchases	Issuances	Sales	Settlements	Ending Balance for Current Quarter End
b. Liabilities										
<b>Total Liabilities</b>	\$ -	\$ -	\$ -	\$ -	\$ -	\$ -	\$ -	\$ -	\$ -	\$ -

## (3) Policies when Transfers Between Levels are Recognized

The Company does not have any transfers between levels of fair value measurement.

## (4) Description of Valuation Techniques and Inputs Used in Fair Value Measurement

Fair Value pricing obtained, where applicable from market prices provided by US Bank, Institutional Trust and Custody, custodian for investment assets, or where applicable, from the NAIC Valuation of Securities database, for assets not priced by US Bank. There has been no change in this valuation technique.

## (5) Fair Value Disclosures

Not Applicable - The Company does not have any derivative assets or liabilities.

## B. Fair Value Reporting under SSAP 100 and Other Accounting Pronouncements

Not Applicable

## C. Aggregate fair value for all financial instruments and the level within the fair value hierarchy in which the fair value measurements in their entirety fall.

Type of Financial Instrument	Aggregate Fair Value	Admitted Assets	(Level 1)	(Level 2)	(Level 3)	Net Asset Value (NAV)	Not Practicable (Carrying Value)
Exempt MM Mutual Fund	\$ 12,269,008	\$ 12,269,008		\$ 12,269,008			

## D. Not Practicable to Estimate Fair Value

Not Applicable

Type or Class of Financial Instrument	Carrying Value	Effective Interest Rate	Maturity Date	Explanation

## E. NAV Practical Expedient Investments

Not Applicable - The Company did not have any investments measured at NAV.

**NOTE 21 Other Items**

Except as noted below in Section C. Other Disclosures, no significant changes from prior year-end 2025.

## A. Unusual or Infrequent Items

The Company had no unusual or infrequent items as of March 31, 2026.

## B. Troubled Debt Restructuring: Debtors

The Company had no troubled debt restructuring as of March 31, 2026.

## C. Other Disclosures

Effective January 1, 2026, the Company ceased issuing new business and all in-force membership terminated as of that date. The Company is now in run-off, with operations limited to administration and settlement of existing obligations. Substantially all of the Company's insurance risk is ceded to USABLE Mutual Insurance Company pursuant to a reinsurance agreement effective January 1, 2022. As a result, the Company does not retain underwriting risk associated with its historical insurance business.

## D. Business Interruption Insurance Recoveries

Not Applicable

## E. State and Federal Tax Credits

Not Applicable

## F. Subprime Mortgage Related Risk Exposure

Not Applicable - The Company did not have subprime mortgage related exposure as of March 31, 2026.

## G. Retained Assets

Not Applicable - The Company did not have retained assets during the reporting periods.

## H. Insurance-Linked Securities (ILS) Contracts

Not Applicable

## I. The Amount That Could Be Realized on Life Insurance Where the Reporting Entity is Owner and Beneficiary or Has Otherwise Obtained Rights to Control the Policy

Not Applicable

**NOTE 22 Events Subsequent**

No significant changes from prior year-end 2025.

**NOTE 23 Reinsurance**

No significant changes from prior year-end 2025.

**NOTES TO FINANCIAL STATEMENTS**

**NOTE 24 Retrospectively Rated Contracts & Contracts Subject to Redetermination**

**A. Method Used to Estimate Accrued Retrospective Premium Adjustments**

The Company estimates accrued retrospective premium adjustments for its health insurance business through a mathematical approach using an algorithm of the company's underwriting rules and experience rating practices.

**B. Retrospective Premiums Recorded Through Written Premium or as an Adjustment to Earned Premium**

The Company records accrued retrospective premium as an adjustment to earned premium.

**C. Amount and Percentage of Net Premiums Written Subject to Retrospective Rating Features**

The amount of net premiums written by the Company at March 31, 2026 that are subject to retrospective rating features was \$0 that represented 100% of the total net premium written. No other net premiums written by the Company are subject to retrospective rating features.

**D. Medical loss ratio rebates required pursuant to the Public Health Service Act.**

No significant changes from prior year-end 2025.

	1	2	3	4	5
	Individual	Small Group Employer	Large Group Employer	Other Categories with Rebates	Total
Prior Reporting Year					
(1) Medical loss ratio rebates incurred	\$ -	\$ -	\$ -	\$ -	\$ -
(2) Medical loss ratio rebates paid					\$ -
(3) Medical loss ratio rebates unpaid					\$ -
(4) Plus reinsurance assumed amounts	XXX	XXX	XXX	XXX	
(5) Less reinsurance ceded amounts	XXX	XXX	XXX	XXX	
(6) Rebates unpaid net of reinsurance	XXX	XXX	XXX	XXX	\$ -
Current Reporting Year-to-Date					
(7) Medical loss ratio rebates incurred	\$ -	\$ -	\$ -	\$ -	\$ -
(8) Medical loss ratio rebates paid					\$ -
(9) Medical loss ratio rebates unpaid					\$ -
(10) Plus reinsurance assumed amounts	XXX	XXX	XXX	XXX	
(11) Less reinsurance ceded amounts	XXX	XXX	XXX	XXX	
(12) Rebates unpaid net of reinsurance	XXX	XXX	XXX	XXX	\$ -

**E. Risk Sharing Provisions of the Affordable Care Act**

(1) Did the reporting entity write accident and health insurance premium which is subject to the Affordable Care Act risk sharing provisions (YES/NO)?

Yes [ ] No [X]

(2) Impact of Risk Sharing Provisions of the Affordable Care Act on Admitted Assets, Liabilities and Revenue for the Current Year

Amount

a. Permanent ACA Risk Adjustment Program

Assets

1. Premium adjustments receivable due to ACA Risk Adjustment (including high risk pool payments) \$ -

Liabilities

2. Risk adjustment user fees payable for ACA Risk Adjustment \$ -

3. Premium adjustments payable due to ACA Risk Adjustment (including high risk pool premium) \$ -

Operations (Revenue & Expense)

4. Reported as revenue in premium for accident and health contracts (written/collected) due to ACA Risk Adjustment \$ -

5. Reported in expenses as ACA risk adjustment user fees (incurred/paid) \$ -

(3) Roll forward of prior year ACA risk sharing provisions for the following asset (gross of any nonadmission) and liability balances along with the reasons for adjustments to prior year balance.

	Accrued During the Prior Year on Business Written Before December 31 of the Prior Year		Received or Paid as of the Current Year on Business Written Before December 31 of the Prior Year		Differences		Adjustments		Unsettled Balances as of the Reporting Date		
					Prior Year Accrued Less Payments (Col 1 - 3)	Prior Year Accrued Less Payments (Col 2 - 4)	To Prior Year Balances	To Prior Year Balances	Cumulative Balance from Prior Years (Col 1-3+7)	Cumulative Balance from Prior Years (Col 2-4+8)	
	1	2	3	4	5	6	7	8	Ref	9	10
	Receivable	Payable	Receivable	Payable	Receivable	Payable	Receivable	Payable		Receivable	Payable
a. Permanent ACA Risk Adjustment Program											
1. Premium adjustments receivable (including high risk pool payments)					\$ -	\$ -			A	\$ -	\$ -
2. Premium adjustments (payable) (including high risk pool premium)					\$ -	\$ -			B	\$ -	\$ -
3. Subtotal ACA Permanent Risk Adjustment Program	\$ -	\$ -	\$ -	\$ -	\$ -	\$ -	\$ -	\$ -		\$ -	\$ -

Explanations of Adjustments

A.

B.

**NOTE 25 Change in Incurred Claims and Claim Adjustment Expenses**

**A. Change in Incurred Losses and Loss Adjustment Expenses**

Subject to a Reinsurance agreement between USABLE PPO Insurance Company (UPPO) and USABLE Mutual Insurance Company (UMIC), UMIC has agreed to reinsure 100% of the UPPO business pursuant to an affiliated reinsurance agreement as submitted to the Arkansas Insurance Department. Therefore the Incurred Claims and Claims Adjustment Expenses have been ceded by UPPO and assumed by UMIC.

**B. Information about Significant Changes in Methodologies and Assumptions**

There have been no significant changes in methodologies and assumptions.

**NOTE 26 Intercompany Pooling Arrangements**

Not Applicable - The Company has no intercompany pooling arrangements.

## NOTES TO FINANCIAL STATEMENTS

---

**NOTE 27 Structured Settlements**

Not Applicable - No changes from the prior year-end 2025.

**NOTE 28 Health Care Receivables**

No significant changes from prior year-end 2025.

**NOTE 29 Participating Policies**

Not Applicable - The Company does not have participating contracts.

**NOTE 30 Premium Deficiency Reserves**

1. Liability carried for premium deficiency reserves

\$

-

2. Date of the most recent evaluation of this liability

03/31/2026

3. Was anticipated investment income utilized in the calculation?

Yes [X] No []

**NOTE 31 Anticipated Salvage and Subrogation**

No significant changes from prior year-end 2025.

# GENERAL INTERROGATORIES

## PART 1 - COMMON INTERROGATORIES

### GENERAL

- 1.1 Did the reporting entity experience any material transactions requiring the filing of Disclosure of Material Transactions with the State of Domicile, as required by the Model Act? ..... Yes [ ] No [ X ]
- 1.2 If yes, has the report been filed with the domiciliary state? ..... Yes [ ] No [ ]
- 2.1 Has any change been made during the year of this statement in the charter, by-laws, articles of incorporation, or deed of settlement of the reporting entity? ..... Yes [ ] No [ X ]
- 2.2 If yes, date of change: .....
- 3.1 Is the reporting entity a member of an Insurance Holding Company System consisting of two or more affiliated persons, one or more of which is an insurer? ..... Yes [ X ] No [ ]  
If yes, complete Schedule Y, Parts 1 and 1A.
- 3.2 Have there been any substantial changes in the organizational chart since the prior quarter end? ..... Yes [ ] No [ X ]
- 3.3 If the response to 3.2 is yes, provide a brief description of those changes.  
.....
- 3.4 Is the reporting entity publicly traded or a member of a publicly traded group? ..... Yes [ ] No [ X ]
- 3.5 If the response to 3.4 is yes, provide the CIK (Central Index Key) code issued by the SEC for the entity/group. ....
- 4.1 Has the reporting entity been a party to a merger or consolidation during the period covered by this statement? ..... Yes [ ] No [ X ]
- 4.2 If yes, provide the name of the entity, NAIC Company Code, and state of domicile (use two letter state abbreviation) for any entity that has ceased to exist as a result of the merger or consolidation.

1	2	3
Name of Entity	NAIC Company Code	State of Domicile

5. If the reporting entity is subject to a management agreement, including third-party administrator(s), managing general agent(s), attorney-in-fact, or similar agreement, have there been any significant changes regarding the terms of the agreement or principals involved? ..... Yes [ ] No [ X ] N/A [ ]  
If yes, attach an explanation.  
.....
- 6.1 State as of what date the latest financial examination of the reporting entity was made or is being made. .... 12/31/2022
- 6.2 State the as of date that the latest financial examination report became available from either the state of domicile or the reporting entity. This date should be the date of the examined balance sheet and not the date the report was completed or released. .... 12/31/2022
- 6.3 State as of what date the latest financial examination report became available to other states or the public from either the state of domicile or the reporting entity. This is the release date or completion date of the examination report and not the date of the examination (balance sheet date). .... 07/22/2024
- 6.4 By what department or departments?  
Arkansas Insurance Department .....
- 6.5 Have all financial statement adjustments within the latest financial examination report been accounted for in a subsequent financial statement filed with Departments? ..... Yes [ ] No [ ] N/A [ X ]
- 6.6 Have all of the recommendations within the latest financial examination report been complied with? ..... Yes [ ] No [ ] N/A [ X ]
- 7.1 Has this reporting entity had any Certificates of Authority, licenses or registrations (including corporate registration, if applicable) suspended or revoked by any governmental entity during the reporting period? ..... Yes [ ] No [ X ]
- 7.2 If yes, give full information:  
.....
- 8.1 Is the company a subsidiary of a bank holding company regulated by the Federal Reserve Board? ..... Yes [ ] No [ X ]
- 8.2 If response to 8.1 is yes, please identify the name of the bank holding company.  
.....
- 8.3 Is the company affiliated with one or more banks, thrifts or securities firms? ..... Yes [ ] No [ X ]
- 8.4 If response to 8.3 is yes, please provide below the names and location (city and state of the main office) of any affiliates regulated by a federal regulatory services agency [i.e. the Federal Reserve Board (FRB), the Office of the Comptroller of the Currency (OCC), the Federal Deposit Insurance Corporation (FDIC) and the Securities Exchange Commission (SEC)] and identify the affiliate's primary federal regulator.

1	2	3	4	5	6
Affiliate Name	Location (City, State)	FRB	OCC	FDIC	SEC

STATEMENT AS OF MARCH 31, 2026 OF THE USABLE PPO Insurance Company

**GENERAL INTERROGATORIES**

- 9.1 Are the senior officers (principal executive officer, principal financial officer, principal accounting officer or controller, or persons performing similar functions) of the reporting entity subject to a code of ethics, which includes the following standards? ..... Yes [ X ] No [ ]
- (a) Honest and ethical conduct, including the ethical handling of actual or apparent conflicts of interest between personal and professional relationships;
- (b) Full, fair, accurate, timely and understandable disclosure in the periodic reports required to be filed by the reporting entity;
- (c) Compliance with applicable governmental laws, rules and regulations;
- (d) The prompt internal reporting of violations to an appropriate person or persons identified in the code; and
- (e) Accountability for adherence to the code.
- 9.11 If the response to 9.1 is no, please explain: .....
- 9.2 Has the code of ethics for senior managers been amended? ..... Yes [ ] No [ X ]
- 9.21 If the response to 9.2 is yes, provide information related to amendment(s). .....
- 9.3 Have any provisions of the code of ethics been waived for any of the specified officers? ..... Yes [ ] No [ X ]
- 9.31 If the response to 9.3 is yes, provide the nature of any waiver(s). .....

**FINANCIAL**

- 10.1 Does the reporting entity report any amounts due from parent, subsidiaries or affiliates on Page 2 of this statement? ..... Yes [ ] No [ X ]
- 10.2 If yes, indicate any amounts receivable from parent included in the Page 2 amount: ..... \$ ..... 0

**INVESTMENT**

- 11.1 Were any of the stocks, bonds, or other assets of the reporting entity loaned, placed under option agreement, or otherwise made available for use by another person? (Exclude securities under securities lending agreements.) ..... Yes [ ] No [ X ]
- 11.2 If yes, give full and complete information relating thereto: .....
12. Amount of real estate and mortgages held in other invested assets in Schedule BA: ..... \$ ..... 0
- 13.1 Does the reporting entity have any investments in parent, subsidiaries and affiliates? ..... Yes [ ] No [ X ]
- 13.2 If yes, please complete the following:
- |   | 1<br>Prior Year-End<br>Book/Adjusted<br>Carrying Value | 2<br>Current Quarter<br>Book/Adjusted<br>Carrying Value |
|---|--|---|
| 13.21 Bonds .....   | \$ ..... 0   | \$ ..... 0  |
| 13.22 Preferred Stock .....   | \$ ..... 0   | \$ ..... 0  |
| 13.23 Common Stock .....  | \$ ..... 0   | \$ ..... 0  |
| 13.24 Short-Term Investments .....  | \$ ..... 0   | \$ ..... 0  |
| 13.25 Mortgage Loans on Real Estate .....   | \$ ..... 0   | \$ ..... 0  |
| 13.26 All Other .....   | \$ ..... 0   | \$ ..... 0  |
| 13.27 Total Investment in Parent, Subsidiaries and Affiliates (Subtotal Lines 13.21 to 13.26) ..... | \$ ..... 0   | \$ ..... 0  |
| 13.28 Total Investment in Parent included in Lines 13.21 to 13.26 above .....                       | \$ ..... 0   | \$ ..... 0  |
- 14.1 Has the reporting entity entered into any hedging transactions reported on Schedule DB? ..... Yes [ ] No [ X ]
- 14.2 If yes, has a comprehensive description of the hedging program been made available to the domiciliary state? ..... Yes [ ] No [ ] N/A [ X ]  
If no, attach a description with this statement. ....
15. For the reporting entity's security lending program, state the amount of the following as of the current statement date:
- 15.1 Total fair value of reinvested collateral assets reported on Schedule DL, Parts 1 and 2 ..... \$ ..... 0
- 15.2 Total book/adjusted carrying value of reinvested collateral assets reported on Schedule DL, Parts 1 and 2 ..... \$ ..... 0
- 15.3 Total payable for securities lending reported on the liability page. .... \$ ..... 0

STATEMENT AS OF MARCH 31, 2026 OF THE USABLE PPO Insurance Company

**GENERAL INTERROGATORIES**

16. Excluding items in Schedule E - Part 3 - Special Deposits, real estate, mortgage loans and investments held physically in the reporting entity's offices, vaults or safety deposit boxes, were all stocks, bonds and other securities, owned throughout the current year held pursuant to a custodial agreement with a qualified bank or trust company in accordance with Section 1, III - General Examination Considerations, F. Outsourcing of Critical Functions, Custodial or Safekeeping Agreements of the NAIC Financial Condition Examiners Handbook? ..... Yes [ X ] No [ ]
- 16.1 For all agreements that comply with the requirements of the NAIC Financial Condition Examiners Handbook, complete the following:

1 Name of Custodian(s)	2 Custodian Address
US Bank Institutional Trust and Custody .....	PO Box 387, St. Louis, MO 61366-0387 .....

- 16.2 For all agreements that do not comply with the requirements of the NAIC Financial Condition Examiners Handbook, provide the name, location and a complete explanation:

1 Name(s)	2 Location(s)	3 Complete Explanation(s)

- 16.3 Have there been any changes, including name changes, in the custodian(s) identified in 16.1 during the current quarter? ..... Yes [ ] No [ X ]
- 16.4 If yes, give full information relating thereto:

1 Old Custodian	2 New Custodian	3 Date of Change	4 Reason

- 16.5 Investment management – Identify all investment advisors, investment managers, broker/dealers, including individuals that have the authority to make investment decisions on behalf of the reporting entity. This includes both primary and sub-advisors. For assets that are managed internally by employees of the reporting entity, note as such. ["...that have access to the investment accounts"; "...handle securities"]

1 Name of Firm or Individual	2 Affiliation
Gray D. Dillard .....	I.....

16.5097 For those firms/individuals listed in the table for Question 16.5, do any firms/individuals unaffiliated with the reporting entity (i.e. designated with a "U") manage more than 10% of the reporting entity's invested assets?..... Yes [ ] No [ X ] N/A [ ]

16.5098 For firms/individuals unaffiliated with the reporting entity (i.e. designated with a "U") listed in the table for Question 16.5, does the total assets under management aggregate to more than 50% of the reporting entity's invested assets?..... Yes [ ] No [ X ] N/A [ ]

- 16.6 For those firms or individuals listed in the table for 16.5 with an affiliation code of "A" (affiliated) or "U" (unaffiliated), provide the information for the table below.

1 Central Registration Depository Number	2 Name of Firm or Individual	3 Registered With	4 Investment Management Agreement (IMA) Filed

- 17.1 Have all the filing requirements of the Purposes and Procedures Manual of the NAIC Investment Analysis Office been followed? ..... Yes [ X ] No [ ]
- 17.2 If no, list exceptions: .....

18. By self-designating 5GI securities, the reporting entity is certifying the following elements for each self-designated 5GI security:
- a. Documentation necessary to permit a full credit analysis of the security does not exist or an NAIC CRP credit rating for an FE or PL security is not available.
  - b. Issuer or obligor is current on all contracted interest and principal payments.
  - c. The insurer has an actual expectation of ultimate payment of all contracted interest and principal.
- Has the reporting entity self-designated 5GI securities? ..... Yes [ ] No [ X ]

## GENERAL INTERROGATORIES

19. By self-designating PLGI securities, the reporting entity is certifying its compliance with the requirements as specified in the Purposes and Procedures Manual of the NAIC Investment Analysis Office (P&P Manual) for private letter rating (PLR) securities and the following elements of each self-designated PLGI security:
- a. The security was either:
    - i. issued prior to January 1, 2018 (which is exempt from PLR filing requirements pursuant to the P&P Manual), or
    - ii. issued from January 1, 2018 to December 31, 2021 and subject to a confidentiality agreement executed prior to January 1, 2022 which confidentiality agreement remains in force, for which an insurance company cannot provide a copy of a private letter rating rationale report to the SVO due to confidentiality or other contractual reasons ("waived submission PLR securities").
  - b. The reporting entity is holding capital commensurate with the NAIC Designation and NAIC Designation Category reported for the security.
  - c. The NAIC Designation and NAIC Designation Category were derived from the credit rating assigned by an NAIC CRP in its legal capacity as a NRSRO which is shown on a current private letter rating, dated during the financial statement year, held by the insurer and available for examination by state insurance regulators.
  - d. Other than for waived submission PLR securities, defined above, on or after January 1, 2024 for any PLR securities issued on or after January 1, 2022, if the reporting entity is not permitted to share this private credit rating or the private rating letter rationale report of the PL security with the SVO, it certifies that it is reporting it as an NAIC 5.B GI and may not assign any other self-designation.
- Has the reporting entity self-designated PLGI to securities, all of which meet the above requirement and as specified in the P&P Manual? ..... Yes [  ] No [  ]
20. By assigning FE to a Schedule BA non-registered private fund, the reporting entity is certifying the following elements of each self-designated FE fund:
- a. The shares were purchased prior to January 1, 2019.
  - b. The reporting entity is holding capital commensurate with the NAIC Designation reported for the security.
  - c. The security had a public credit rating(s) with annual surveillance assigned by an NAIC CRP in its legal capacity as an NRSRO prior to January 1, 2019.
  - d. The fund only or predominantly holds bonds in its portfolio.
  - e. The current reported NAIC Designation was derived from the public credit rating(s) with annual surveillance assigned by an NAIC CRP in its legal capacity as an NRSRO.
  - f. The public credit rating(s) with annual surveillance assigned by an NAIC CRP has not lapsed.
- Has the reporting entity assigned FE to Schedule BA non-registered private funds that complied with the above criteria? ..... Yes [  ] No [  ]

# GENERAL INTERROGATORIES

## PART 2 - HEALTH

1. Operating Percentages:
- 1.1 A&H loss percent .....0.000 %
  - 1.2 A&H cost containment percent .....0.000 %
  - 1.3 A&H expense percent excluding cost containment expenses .....0.000 %
- 2.1 Do you act as a custodian for health savings accounts? ..... Yes [ ] No [ X ]
- 2.2 If yes, please provide the amount of custodial funds held as of the reporting date ..... \$.....
- 2.3 Do you act as an administrator for health savings accounts? ..... Yes [ ] No [ X ]
- 2.4 If yes, please provide the balance of the funds administered as of the reporting date ..... \$.....
3. Is the reporting entity licensed or chartered, registered, qualified, eligible or writing business in at least two states? ..... Yes [ ] No [ X ]
- 3.1 If no, does the reporting entity assume reinsurance business that covers risks residing in at least one state other than the state of domicile of the reporting entity? ..... Yes [ ] No [ X ]

**SCHEDULE S - CEDED REINSURANCE**

Showing All New Reinsurance Treaties - Current Year to Date

1 NAIC Company Code	2 ID Number	3 Effective Date	4 Name of Reinsurer	5 Domiciliary Jurisdiction	6 Type of Reinsurance Ceded	7 Type of Business Ceded	8 Type of Reinsurer	9 Certified Reinsurer Rating (1 through 6)	10 Effective Date of Certified Reinsurer Rating
<b>NONE</b>									

**SCHEDULE T - PREMIUMS AND OTHER CONSIDERATIONS**

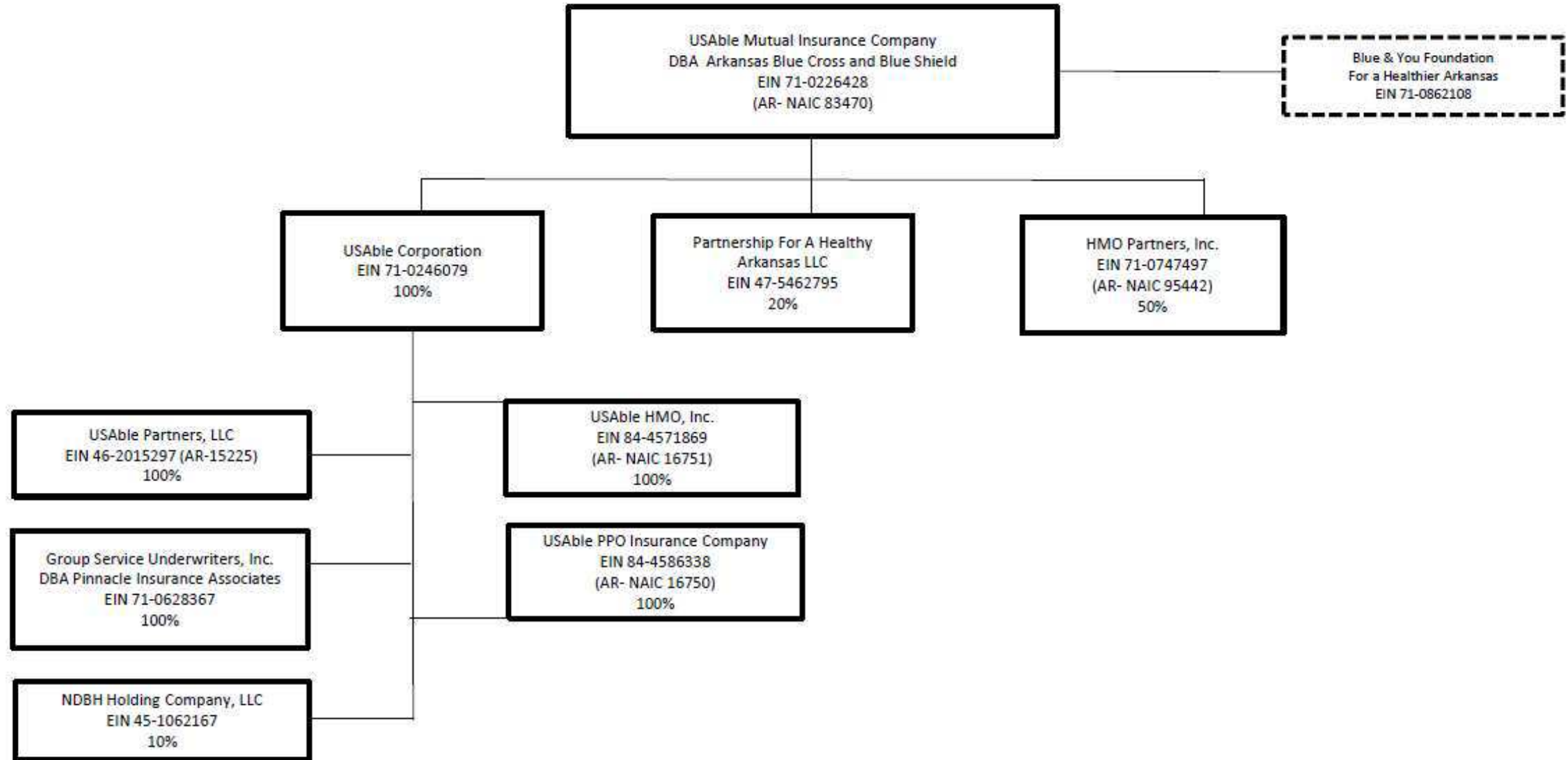
Current Year to Date - Allocated by States and Territories

States, etc.	1 Active Status (a)	Direct Business Only									
		2 Accident and Health Premiums	3 Medicare Title XVIII	4 Medicaid Title XIX	5 CHIP Title XXI	6 Federal Employees Health Benefits Program Premiums	7 Life and Annuity Premiums & Other Considerations	8 Property/Casualty Premiums	9 Total Columns 2 Through 8	10 Deposit-Type Contracts	
1. Alabama	AL	N								0	
2. Alaska	AK	N								0	
3. Arizona	AZ	N								0	
4. Arkansas	AR	L	195,411							195,411	
5. California	CA	N								0	
6. Colorado	CO	N								0	
7. Connecticut	CT	N								0	
8. Delaware	DE	N								0	
9. District of Columbia	DC	N								0	
10. Florida	FL	N								0	
11. Georgia	GA	N								0	
12. Hawaii	HI	N								0	
13. Idaho	ID	N								0	
14. Illinois	IL	N								0	
15. Indiana	IN	N								0	
16. Iowa	IA	N								0	
17. Kansas	KS	N								0	
18. Kentucky	KY	N								0	
19. Louisiana	LA	N								0	
20. Maine	ME	N								0	
21. Maryland	MD	N								0	
22. Massachusetts	MA	N								0	
23. Michigan	MI	N								0	
24. Minnesota	MN	N								0	
25. Mississippi	MS	N								0	
26. Missouri	MO	N								0	
27. Montana	MT	N								0	
28. Nebraska	NE	N								0	
29. Nevada	NV	N								0	
30. New Hampshire	NH	N								0	
31. New Jersey	NJ	N								0	
32. New Mexico	NM	N								0	
33. New York	NY	N								0	
34. North Carolina	NC	N								0	
35. North Dakota	ND	N								0	
36. Ohio	OH	N								0	
37. Oklahoma	OK	N								0	
38. Oregon	OR	N								0	
39. Pennsylvania	PA	N								0	
40. Rhode Island	RI	N								0	
41. South Carolina	SC	N								0	
42. South Dakota	SD	N								0	
43. Tennessee	TN	N								0	
44. Texas	TX	N								0	
45. Utah	UT	N								0	
46. Vermont	VT	N								0	
47. Virginia	VA	N								0	
48. Washington	WA	N								0	
49. West Virginia	WV	N								0	
50. Wisconsin	WI	N								0	
51. Wyoming	WY	N								0	
52. American Samoa	AS	N								0	
53. Guam	GU	N								0	
54. Puerto Rico	PR	N								0	
55. U.S. Virgin Islands	VI	N								0	
56. Northern Mariana Islands	MP	N								0	
57. Canada	CAN	N								0	
58. Aggregate Other Aliens	OT	XXX	0	0	0	0	0	0	0	0	0
59. Subtotal	XXX	0	195,411	0	0	0	0	0	195,411	0	0
60. Reporting Entity Contributions for Employee Benefit Plans	XXX									0	
61. Totals (Direct Business)	XXX	0	195,411	0	0	0	0	0	195,411	0	0
DETAILS OF WRITE-INS											
58001.	XXX										
58002.	XXX										
58003.	XXX										
58998. Summary of remaining write-ins for Line 58 from overflow page	XXX	0	0	0	0	0	0	0	0	0	0
58999. Totals (Lines 58001 through 58003 plus 58998)(Line 58 above)	XXX	0	0	0	0	0	0	0	0	0	0

(a) Active Status Counts:

- 1. L - Licensed or Chartered - Licensed insurance carrier or domiciled RRG..... 1
- 2. R - Registered - Non-domiciled RRGs..... 0
- 3. E - Eligible - Reporting entities eligible or approved to write surplus lines in the state. .... 0
- 4. Q - Qualified - Qualified or accredited reinsurer..... 0
- 5. N - None of the above - Not allowed to write business in the state..... 56

**SCHEDULE Y - INFORMATION CONCERNING ACTIVITIES OF INSURER MEMBERS OF A HOLDING COMPANY GROUP  
PART 1 - ORGANIZATIONAL CHART**



NOTE: Life & Specialty Ventures, LLC formed its own holding company group (Group 5050) in May 2023 and is no longer a member of the Arkansas BCBS GRP #876.

STATEMENT AS OF MARCH 31, 2026 OF THE USAbLe PPO Insurance Company

**SCHEDULE Y**

**PART 1A - DETAILS OF INSURANCE HOLDING COMPANY SYSTEM**

1	2	3	4	5	6	7	8	9	10	11	12	13	14	15	16
Group Code	Group Name	NAIC Company Code	ID Number	Federal RSSD	CIK	Name of Securities Exchange if Publicly Traded (U.S. or International)	Names of Parent, Subsidiaries Or Affiliates	Domi-ciliary Loca-tion	Relation-ship to Reporting Entity	Directly Controlled by (Name of Entity/Person)	Type of Control (Ownership, Board, Management, Attorney-in-Fact, Influence, Other)	If Control is Ownership Provide Percen-tage	Ultimate Controlling Entity(ies)/Person(s)	Is an SCA Filing Re-quired? (Yes/No)	*
.0876	Arkansas BCBS Group	83470	71-0226428				USAbLe Mutal Insurance Company	AR	UIP	USAbLe Mutual Insurance Company	Board of Directors		USAbLe Mutual Insurance Company	NO	
.0876	Arkansas BCBS Group		71-0862108				Blue & You Foundation	AR	NIA	USAbLe Mutual Insurance Company	Board, Influence		USAbLe Mutual Insurance Company	NO	
.0876	Arkansas BCBS Group		71-0246079				USAbLe Corporation	AR	UDP	USAbLe Mutual Insurance Company	Ownership, Board, Influence	100.000	USAbLe Mutual Insurance Company	YES	
.0876	Arkansas BCBS Group		47-5462795				Partnership for a Healthy Arkansas LLC	AR	NIA	USAbLe Mutual Insurance Company	Ownership, Board, Influence	20.000	USAbLe Mutual Insurance Company	NO	
.0876	Arkansas BCBS Group	95442	71-0747497				HMO Partners, Inc.	AR	IA	USAbLe Mutual Insurance Company	Ownership, Board, Influence	50.000	USAbLe Mutual Insurance Company	NO	
.0876	Arkansas BCBS Group		71-0628367				Group Service Underwriters, Inc	AR	NIA	USAbLe Corporation	Ownership, Board, Influence	100.000	USAbLe Mutual Insurance Company	NO	
.0876	Arkansas BCBS Group		46-2015297				USAbLe Partners, LLC	AR	IA	USAbLe Corporation	Ownership, Board, Influence	100.000	USAbLe Mutual Insurance Company	NO	
.0876	Arkansas BCBS Group		45-1062167				NDBH Holding Company, LLC	AR	NIA	USAbLe Corporation	Ownership, Board, Influence	10.000	USAbLe Mutual Insurance Company	NO	
.0876	Arkansas BCBS Group	16751	84-4571869				USAbLe HMO, Inc.	AR	IA	USAbLe Corporation	Ownership, Board, Influence	100.000	USAbLe Mutual Insurance Company	NO	
.0876	Arkansas BCBS Group	16750	84-4586338				USAbLe PPO Insurance Company	AR	RE	USAbLe Corporation	Ownership, Board, Influence	100.000	USAbLe Mutual Insurance Company	NO	

Asterisk	Explanation
----------	-------------

# SUPPLEMENTAL EXHIBITS AND SCHEDULES INTERROGATORIES

The following supplemental reports are required to be filed as part of your statement filing. However, in the event that your company does not transact the type of business for which the special report must be filed, your response of NO to the specific interrogatory will be accepted in lieu of filing a "NONE" report and a bar code will be printed below. If the supplement is required of your company but is not being filed for whatever reason enter SEE EXPLANATION and provide an explanation following the interrogatory questions.

	Response
1. Will the Medicare Part D Coverage Supplement be filed with the state of domicile and the NAIC with this statement? .....	NO

**AUGUST FILING**

2. Will the regulator-only (non-public) Communication of Internal Control Related Matters Noted in Audit be filed with the state of domicile and electronically with the NAIC (as a regulator-only non-public document) by August 1? The response for 1st and 3rd quarters should be N/A. A NO response resulting with a bar code is only appropriate in the 2nd quarter. ....	N/A
--	-----

Explanation:

1. No Medicare Part D business written or assumed by UPPO.

Bar Code:

1. Medicare Part D Coverage Supplement [Document Identifier 365]



**OVERFLOW PAGE FOR WRITE-INS**

**NONE**

STATEMENT AS OF MARCH 31, 2026 OF THE US Able PPO Insurance Company

**SCHEDULE A - VERIFICATION**

Real Estate

	1 Year to Date	2 Prior Year Ended December 31
1. Book/adjusted carrying value, December 31 of prior year .....		
2. Cost of acquired:		
2.1 Actual cost at time of acquisition .....		
2.2 Additional investment made after acquisition .....		
3. Current year change in encumbrances .....		
4. Total gain (loss) on disposals .....		
5. Deduct amounts received on disposals .....		
6. Total foreign exchange change in book/adjusted carrying value .....		
7. Deduct current year's other than temporary impairment recognized .....		
8. Deduct current year's depreciation .....		
9. Book/adjusted carrying value at the end of current period (Lines 1+2+3+4-5+6-7-8) .....		
10. Deduct total nonadmitted amounts .....		
11. Statement value at end of current period (Line 9 minus Line 10)		

**NONE**

**SCHEDULE B - VERIFICATION**

Mortgage Loans

	1 Year to Date	2 Prior Year Ended December 31
1. Book value/recorded investment excluding accrued interest, December 31 of prior year .....		
2. Cost of acquired:		
2.1 Actual cost at time of acquisition .....		
2.2 Additional investment made after acquisition .....		
3. Capitalized deferred interest and other .....		
4. Accrual of discount .....		
5. Unrealized valuation increase/(decrease) .....		
6. Total gain (loss) on disposals .....		
7. Deduct amounts received on disposals .....		
8. Deduct amortization of premium and mortgage interest paid and commitment fees .....		
9. Total foreign exchange change in book value/recorded investment excluding accrued interest .....		
10. Deduct current year's other than temporary impairment recognized .....		
11. Book value/recorded investment excluding accrued interest at end of current period (Lines 1+2+3+4+5+6-7-8+9-10) .....		
12. Total valuation allowance .....		
13. Subtotal (Line 11 plus Line 12) .....		
14. Deduct total nonadmitted amounts .....		
15. Statement value at end of current period (Line 13 minus Line 14)		

**NONE**

**SCHEDULE BA - VERIFICATION**

Other Long-Term Invested Assets

	1 Year to Date	2 Prior Year Ended December 31
1. Book/adjusted carrying value, December 31 of prior year .....		
2. Cost of acquired:		
2.1 Actual cost at time of acquisition .....		
2.2 Additional investment made after acquisition .....		
3. Capitalized deferred interest and other .....		
4. Accrual of discount .....		
5. Unrealized valuation increase/(decrease) .....		
6. Total gain (loss) on disposals .....		
7. Deduct amounts received on disposals .....		
8. Deduct amortization of premium, depreciation and proportional amortization .....		
9. Total foreign exchange change in book/adjusted carrying value .....		
10. Deduct current year's other than temporary impairment recognized .....		
11. Book/adjusted carrying value at end of current period (Lines 1+2+3+4+5+6-7-8+9-10) .....		
12. Deduct total nonadmitted amounts .....		
13. Statement value at end of current period (Line 11 minus Line 12)		

**NONE**

**SCHEDULE D - VERIFICATION**

Bonds and Stocks

	1 Year to Date	2 Prior Year Ended December 31
1. Book/adjusted carrying value of bonds and stocks, December 31 of prior year .....	4,808,690	24,632,017
2. Cost of bonds and stocks acquired .....	0	0
3. Accrual of discount .....	31,675	145,830
4. Unrealized valuation increase/(decrease) .....	0	0
5. Total gain (loss) on disposals .....	0	(309,057)
6. Deduct consideration for bonds and stocks disposed of .....	0	19,660,100
7. Deduct amortization of premium .....	0	0
8. Total foreign exchange change in book/adjusted carrying value .....	0	0
9. Deduct current year's other than temporary impairment recognized .....	0	0
10. Total investment income recognized as a result of prepayment penalties and/or acceleration fees .....	0	0
11. Book/adjusted carrying value at end of current period (Lines 1+2+3+4+5-6-7+8-9+10) .....	4,840,365	4,808,690
12. Deduct total nonadmitted amounts .....	0	0
13. Statement value at end of current period (Line 11 minus Line 12)	4,840,365	4,808,690

STATEMENT AS OF MARCH 31, 2026 OF THE USABLE PPO Insurance Company

**SCHEDULE D - PART 1B**

Showing the Acquisitions, Dispositions and Non-Trading Activity  
During the Current Quarter for all Bonds and Preferred Stock by NAIC Designation

NAIC Designation	1 Book/Adjusted Carrying Value Beginning of Current Quarter	2 Acquisitions During Current Quarter	3 Dispositions During Current Quarter	4 Non-Trading Activity During Current Quarter	5 Book/Adjusted Carrying Value End of First Quarter	6 Book/Adjusted Carrying Value End of Second Quarter	7 Book/Adjusted Carrying Value End of Third Quarter	8 Book/Adjusted Carrying Value December 31 Prior Year
<b>ISSUER CREDIT OBLIGATIONS (ICO)</b>								
1. NAIC 1 (a) .....	4,808,690	0	0	31,675	4,840,365	0	0	4,808,690
2. NAIC 2 (a) .....	0	0	0	0	0	0	0	0
3. NAIC 3 (a) .....	0	0	0	0	0	0	0	0
4. NAIC 4 (a) .....	0	0	0	0	0	0	0	0
5. NAIC 5 (a) .....	0	0	0	0	0	0	0	0
6. NAIC 6 (a) .....	0	0	0	0	0	0	0	0
7. Total ICO	4,808,690	0	0	31,675	4,840,365	0	0	4,808,690
<b>ASSET-BACKED SECURITIES (ABS)</b>								
8. NAIC 1 .....	0	0	0	0	0	0	0	0
9. NAIC 2 .....	0	0	0	0	0	0	0	0
10. NAIC 3 .....	0	0	0	0	0	0	0	0
11. NAIC 4 .....	0	0	0	0	0	0	0	0
12. NAIC 5 .....	0	0	0	0	0	0	0	0
13. NAIC 6 .....	0	0	0	0	0	0	0	0
14. Total ABS	0	0	0	0	0	0	0	0
<b>PREFERRED STOCK</b>								
15. NAIC 1 .....	0	0	0	0	0	0	0	0
16. NAIC 2 .....	0	0	0	0	0	0	0	0
17. NAIC 3 .....	0	0	0	0	0	0	0	0
18. NAIC 4 .....	0	0	0	0	0	0	0	0
19. NAIC 5 .....	0	0	0	0	0	0	0	0
20. NAIC 6 .....	0	0	0	0	0	0	0	0
21. Total Preferred Stock	0	0	0	0	0	0	0	0
22. Total ICO, ABS & Preferred Stock	4,808,690	0	0	31,675	4,840,365	0	0	4,808,690

(a) Book/Adjusted Carrying Value column for the end of the current reporting period includes the following amount of short-term and cash equivalent bonds by NAIC designation:

NAIC 1 \$ .....0 ; NAIC 2 \$ .....0 ; NAIC 3 \$ .....0 NAIC 4 \$ .....0 ; NAIC 5 \$ .....0 ; NAIC 6 \$ .....0

S102

**SCHEDULE DA - PART 1**

Short-Term Investments

	1	2	3	4	5
	Book/Adjusted Carrying Value	Premium	Actual Cost	Interest Collected Year-to-Date	Paid for Accrued Interest Year-to-Date
7709999999 Totals		XX			

**NONE**

**SCHEDULE DA - VERIFICATION**

Short-Term Investments

	1	2
	Year To Date	Prior Year Ended December 31
1. Book/adjusted carrying value, December 31 of prior year .....	0	4,954,175
2. Cost of short-term investments acquired .....	0	2,967,953
3. Accrual of discount .....	0	77,872
4. Unrealized valuation increase/(decrease) .....	0	0
5. Total gain (loss) on disposals .....	0	0
6. Deduct consideration received on disposals .....	0	8,000,000
7. Deduct amortization of premium .....	0	0
8. Total foreign exchange change in book/adjusted carrying value .....	0	0
9. Deduct current year's other than temporary impairment recognized .....	0	0
10. Book/adjusted carrying value at end of current period (Lines 1+2+3+4+5-6-7+8-9) .....	0	0
11. Deduct total nonadmitted amounts .....	0	0
12. Statement value at end of current period (Line 10 minus Line 11)	0	0

Schedule DB - Part A - Verification - Options, Caps, Floors, Collars, Swaps and Forwards

**N O N E**

Schedule DB - Part B - Verification - Futures Contracts

**N O N E**

Schedule DB - Part C - Section 1 - Replication (Synthetic Asset) Transactions (RSATs) Open

**N O N E**

Schedule DB-Part C-Section 2-Reconciliation of Replication (Synthetic Asset) Transactions Open

**N O N E**

Schedule DB - Verification - Book/Adjusted Carrying Value, Fair Value and Potential Exposure of  
Derivatives

**N O N E**

## STATEMENT AS OF MARCH 31, 2026 OF THE USAble PPO Insurance Company

**SCHEDULE E - PART 2 - VERIFICATION**

(Cash Equivalents)

	1	2
	Year To Date	Prior Year Ended December 31
1. Book/adjusted carrying value, December 31 of prior year .....	8,347,950	4,982,216
2. Cost of cash equivalents acquired .....	3,921,289	20,266,731
3. Accrual of discount .....	0	0
4. Unrealized valuation increase/(decrease) .....	0	0
5. Total gain (loss) on disposals .....	0	0
6. Deduct consideration received on disposals .....	231	16,900,997
7. Deduct amortization of premium .....	0	0
8. Total foreign exchange change in book/adjusted carrying value .....	0	0
9. Deduct current year's other than temporary impairment recognized .....	0	0
10. Book/adjusted carrying value at end of current period (Lines 1+2+3+4+5-6-7+8-9) .....	12,269,008	8,347,950
11. Deduct total nonadmitted amounts .....	0	0
12. Statement value at end of current period (Line 10 minus Line 11)	12,269,008	8,347,950

Schedule A - Part 2 - Real Estate Acquired and Additions Made

**NONE**

Schedule A - Part 3 - Real Estate Disposed

**NONE**

Schedule B - Part 2 - Mortgage Loans Acquired and Additions Made

**NONE**

Schedule B - Part 3 - Mortgage Loans Disposed, Transferred or Repaid

**NONE**

Schedule BA - Part 2 - Other Long-Term Invested Assets Acquired and Additions Made

**NONE**

Schedule BA - Part 3 - Other Long-Term Invested Assets Disposed, Transferred or Repaid

**NONE**

Schedule D - Part 3 - Long-Term Bonds and Stocks Acquired

**NONE**

Schedule D - Part 4 - Long-Term Bonds and Stocks Sold, Redeemed or Otherwise Disposed Of

**NONE**

Schedule DB - Part A - Section 1 - Options, Caps, Floors, Collars, Swaps and Forwards Open

**NONE**

Schedule DB - Part B - Section 1 - Futures Contracts Open

**NONE**

Schedule DB - Part B - Section 1B - Brokers with whom cash deposits have been made

**NONE**

Schedule DB - Part D - Section 1 - Counterparty Exposure for Derivative Instruments Open

**NONE**

Schedule DB - Part D-Section 2 - Collateral for Derivative Instruments Open - Pledged By

**NONE**

Schedule DB - Part D-Section 2 - Collateral for Derivative Instruments Open - Pledged To

**NONE**

Schedule DB - Part E - Derivatives Hedging Variable Annuity Guarantees

**N O N E**

Schedule DL - Part 1 - Reinvested Collateral Assets Owned

**N O N E**

Schedule DL - Part 2 - Reinvested Collateral Assets Owned

**N O N E**



STATEMENT AS OF MARCH 31, 2026 OF THE USABLE PPO Insurance Company

**SCHEDULE E - PART 2 - CASH EQUIVALENTS**

Show Investments Owned End of Current Quarter

1 CUSIP	2 Description	3 Restricted Asset Code	4 Date Acquired	5 Stated Rate of Interest	6 Maturity Date	7 Book/Adjusted Carrying Value	8 Amount of Interest Due and Accrued	9 Amount Received During Year
0489999999. Total - issuer credit obligations (unaffiliated)						0	0	0
0499999999. Total - issuer credit obligations (affiliated)						0	0	0
0509999999. Total - issuer credit obligations						0	0	0
60934N-50-0	FEDERATED HPMS TRS INST		03/03/2026	3.520		12,269,008	36,780	77,574
8209999999. Subtotal - exempt money market mutual funds - as identified by the SVO						12,269,008	36,780	77,574
8589999999. Total cash equivalents (unaffiliated)						12,269,008	36,780	77,574
8599999999. Total cash equivalents (affiliated)						0	0	0
8609999999 - Total cash equivalents						12,269,008	36,780	77,574

E14