



# HEALTH QUARTERLY STATEMENT

AS OF MARCH 31, 2022  
OF THE CONDITION AND AFFAIRS OF THE

## SilverScript Insurance Company

NAIC Group Code 0001 0001 NAIC Company Code 12575 Employer's ID Number 20-2833904  
(Current) (Prior)

Organized under the Laws of Tennessee State of Domicile or Port of Entry TN

Country of Domicile United States of America

Licensed as business type: Life, Accident & Health

Is HMO Federally Qualified? Yes [ ] No [ ]

Incorporated/Organized 05/11/2005 Commenced Business 01/01/2006

Statutory Home Office 1021 Reams Fleming Boulevard Franklin, TN, US 37064  
(Street and Number) (City or Town, State, Country and Zip Code)

Main Administrative Office 1021 Reams Fleming Boulevard Franklin, TN, US 37064  
(Street and Number) (City or Town, State, Country and Zip Code)  
615-807-7500  
(Area Code) (Telephone Number)

Mail Address 1021 Reams Fleming Boulevard Franklin, TN, US 37064  
(Street and Number or P.O. Box) (City or Town, State, Country and Zip Code)

Primary Location of Books and Records 1021 Reams Fleming Boulevard Franklin, TN, US 37064  
(Street and Number) (City or Town, State, Country and Zip Code)  
615-807-7500  
(Area Code) (Telephone Number)

Internet Website Address www.silverscript.com

Statutory Statement Contact Xiaoqi Wang 401-770-9669  
(Name) (Area Code) (Telephone Number)  
Xiaoqi.Wang@CVSCaremark.com 401-733-0136  
(E-mail Address) (FAX Number)

### OFFICERS

President Terri Ann Swanson Controller Xiaoqi Wang  
Vice President and Secretary Edward Chung-I Lee

### OTHER

Derek Scott Blunt, Senior Investment Officer Jeffrey James Drzazgowski, Appointed Actuary Tracy Louise Smith, Vice President and Treasurer

### DIRECTORS OR TRUSTEES

Peter Andrew Charles Robert Sean Healy Tracy Louise Smith  
Terri Ann Swanson

The officers of this reporting entity being duly sworn, each depose and say that they are the described officers of said reporting entity, and that on the reporting period stated above, all of the herein described assets were the absolute property of the said reporting entity, free and clear from any liens or claims thereon, except as herein stated, and that this statement, together with related exhibits, schedules and explanations therein contained, annexed or referred to, is a full and true statement of all the assets and liabilities and of the condition and affairs of the said reporting entity as of the reporting period stated above, and of its income and deductions therefrom for the period ended, and have been completed in accordance with the NAIC Annual Statement Instructions and Accounting Practices and Procedures manual except to the extent that: (1) state law may differ; or, (2) that state rules or regulations require differences in reporting not related to accounting practices and procedures, according to the best of their information, knowledge and belief, respectively. Furthermore, the scope of this attestation by the described officers also includes the related corresponding electronic filing with the NAIC, when required, that is an exact copy (except for formatting differences due to electronic filing) of the enclosed statement. The electronic filing may be requested by various regulators in lieu of or in addition to the enclosed statement.

Terri Ann Swanson  
Terri Ann Swanson  
President

Edward Chung-I Lee  
Edward Chung-I Lee  
Vice President and Secretary

Xiaoqi Wang  
Xiaoqi Wang  
Controller

State of..... Pennsylvania  
County of..... Montgomery  
Subscribed and sworn to before me this  
15<sup>th</sup> day of April, 2022  
K  
NOTARY PUBLIC (Seal)

State of..... Connecticut  
County of..... Hartford  
Subscribed and sworn to before me this  
22<sup>nd</sup> day of April, 2022  
Cynthia Montano  
NOTARY PUBLIC (Seal)

State of..... Pennsylvania  
County of..... Montgomery  
Subscribed and sworn to before me this  
3<sup>rd</sup> day of May, 2022  
K  
NOTARY PUBLIC (Seal)

Commonwealth of Pennsylvania - Notary Seal  
KIM E. ROTH, Notary Public  
Montgomery County  
My Commission Expires April 25, 2025  
Commission Number 1141410

CYNTHIA MONTANO  
Notary Public, State of Connecticut  
My Commission Expires Mar. 31, 2026

Commonwealth of Pennsylvania - Notary Seal  
KIM E. ROTH, Notary Public  
Montgomery County  
My Commission Expires April 25, 2025  
Commission Number 1141410

- a. Is this an original filing? ..... Yes [X] No [ ]  
b. If no,  
1. State the amendment number.....  
2. Date filed .....  
3. Number of pages attached.....

## STATEMENT AS OF MARCH 31, 2022 OF THE SilverScript Insurance Company

**ASSETS**

	Current Statement Date			4 December 31 Prior Year Net Admitted Assets
	1 Assets	2 Nonadmitted Assets	3 Net Admitted Assets (Cols. 1 - 2)	
1. Bonds .....	4,029,025		4,029,025	3,914,481
2. Stocks:				
2.1 Preferred stocks .....			0	0
2.2 Common stocks .....			0	0
3. Mortgage loans on real estate:				
3.1 First liens .....			0	0
3.2 Other than first liens.....			0	0
4. Real estate:				
4.1 Properties occupied by the company (less \$ encumbrances) .....			0	0
4.2 Properties held for the production of income (less \$ ..... encumbrances) .....			0	0
4.3 Properties held for sale (less \$ encumbrances) .....			0	0
5. Cash (\$ .....(23,589,028) ), cash equivalents (\$ .....596,705,674 ) and short-term investments (\$ ..... ) .....	573,116,646		573,116,646	304,700,555
6. Contract loans (including \$ ..... premium notes) .....			0	0
7. Derivatives .....			0	0
8. Other invested assets .....			0	0
9. Receivables for securities .....			0	0
10. Securities lending reinvested collateral assets .....			0	0
11. Aggregate write-ins for invested assets .....	0	0	0	0
12. Subtotals, cash and invested assets (Lines 1 to 11) .....	577,145,671	0	577,145,671	308,615,036
13. Title plants less \$ ..... charged off (for Title insurers only) .....			0	0
14. Investment income due and accrued .....	36,996		36,996	26,218
15. Premiums and considerations:				
15.1 Uncollected premiums and agents' balances in the course of collection .....	32,475,477	9,305,126	23,170,351	21,574,692
15.2 Deferred premiums, agents' balances and installments booked but deferred and not yet due (including \$ ..... earned but unbilled premiums) .....			0	0
15.3 Accrued retrospective premiums (\$ ..... ) and contracts subject to redetermination (\$ .....136,948,133 ) .....	136,948,133		136,948,133	20,914,093
16. Reinsurance:				
16.1 Amounts recoverable from reinsurers .....			0	0
16.2 Funds held by or deposited with reinsured companies .....	115,939,657		115,939,657	69,324,189
16.3 Other amounts receivable under reinsurance contracts .....			0	0
17. Amounts receivable relating to uninsured plans .....	1,820,490,020	163,875	1,820,326,145	2,452,276,226
18.1 Current federal and foreign income tax recoverable and interest thereon .....	1,347,825		1,347,825	0
18.2 Net deferred tax asset .....	101,822,857	1,741,220	100,081,637	100,081,637
19. Guaranty funds receivable or on deposit .....			0	0
20. Electronic data processing equipment and software .....			0	0
21. Furniture and equipment, including health care delivery assets (\$ ..... ) .....			0	0
22. Net adjustment in assets and liabilities due to foreign exchange rates .....			0	0
23. Receivables from parent, subsidiaries and affiliates .....	120,870,310	266,111	120,604,199	157,883,778
24. Health care (\$ .....439,917,661 ) and other amounts receivable .....	359,808,332	9,842,754	349,965,578	192,884,659
25. Aggregate write-ins for other than invested assets .....	44,402,906	44,402,906	0	0
26. Total assets excluding Separate Accounts, Segregated Accounts and Protected Cell Accounts (Lines 12 to 25) .....	3,311,288,184	65,721,992	3,245,566,192	3,323,580,528
27. From Separate Accounts, Segregated Accounts and Protected Cell Accounts .....			0	0
28. Total (Lines 26 and 27)	3,311,288,184	65,721,992	3,245,566,192	3,323,580,528
<b>DETAILS OF WRITE-INS</b>				
1101. ....				
1102. ....				
1103. ....				
1198. Summary of remaining write-ins for Line 11 from overflow page .....	0	0	0	0
1199. Totals (Lines 1101 through 1103 plus 1198)(Line 11 above)	0	0	0	0
2501. Prepaid Expenses .....	44,402,906	44,402,906	0	0
2502. ....				
2503. ....				
2598. Summary of remaining write-ins for Line 25 from overflow page .....	0	0	0	0
2599. Totals (Lines 2501 through 2503 plus 2598)(Line 25 above)	44,402,906	44,402,906	0	0

**LIABILITIES, CAPITAL AND SURPLUS**

	Current Period			Prior Year
	1 Covered	2 Uncovered	3 Total	4 Total
1. Claims unpaid (less \$ ..... reinsurance ceded) .....	164		164	24
2. Accrued medical incentive pool and bonus amounts .....			0	0
3. Unpaid claims adjustment expenses .....			0	0
4. Aggregate health policy reserves, including the liability of \$ ..... for medical loss ratio rebate per the Public Health Service Act .....	27,176,006		27,176,006	32,193,615
5. Aggregate life policy reserves .....			0	0
6. Property/casualty unearned premium reserve .....			0	0
7. Aggregate health claim reserves .....			0	0
8. Premiums received in advance .....	62,583,672		62,583,672	33,160,290
9. General expenses due or accrued .....	934,962		934,962	6,941,321
10.1 Current federal and foreign income tax payable and interest thereon (including \$ ..... on realized gains (losses)) .....			0	16,297,613
10.2 Net deferred tax liability .....			0	0
11. Ceded reinsurance premiums payable .....	33,268,734		33,268,734	45,785,884
12. Amounts withheld or retained for the account of others .....			0	0
13. Remittances and items not allocated .....			0	0
14. Borrowed money (including \$ ..... current) and interest thereon \$ ..... (including \$ ..... current) .....			0	0
15. Amounts due to parent, subsidiaries and affiliates .....			0	0
16. Derivatives .....			0	0
17. Payable for securities .....			0	0
18. Payable for securities lending .....			0	0
19. Funds held under reinsurance treaties (with \$ ..... authorized reinsurers, \$ ..... unauthorized reinsurers and \$ ..... certified reinsurers) .....			0	0
20. Reinsurance in unauthorized and certified (\$ ..... ) companies .....			0	0
21. Net adjustments in assets and liabilities due to foreign exchange rates .....			0	0
22. Liability for amounts held under uninsured plans .....	2,128,634,164		2,128,634,164	2,145,192,518
23. Aggregate write-ins for other liabilities (including \$ ..... current) .....	0	0	0	0
24. Total liabilities (Lines 1 to 23) .....	2,252,597,702	0	2,252,597,702	2,279,571,265
25. Aggregate write-ins for special surplus funds .....	XXX	XXX	0	0
26. Common capital stock .....	XXX	XXX	2,750,000	2,750,000
27. Preferred capital stock .....	XXX	XXX		
28. Gross paid in and contributed surplus .....	XXX	XXX	124,750,000	124,750,000
29. Surplus notes .....	XXX	XXX		
30. Aggregate write-ins for other than special surplus funds .....	XXX	XXX	0	0
31. Unassigned funds (surplus) .....	XXX	XXX	865,468,490	916,509,263
32. Less treasury stock, at cost:				
32.1 ..... shares common (value included in Line 26 \$ ..... ) .....	XXX	XXX		
32.2 ..... shares preferred (value included in Line 27 \$ ..... ) .....	XXX	XXX		
33. Total capital and surplus (Lines 25 to 31 minus Line 32) .....	XXX	XXX	992,968,490	1,044,009,263
34. Total liabilities, capital and surplus (Lines 24 and 33) .....	XXX	XXX	3,245,566,192	3,323,580,528
<b>DETAILS OF WRITE-INS</b>				
2301. ....				
2302. ....				
2303. ....				
2398. Summary of remaining write-ins for Line 23 from overflow page .....	0	0	0	0
2399. Totals (Lines 2301 through 2303 plus 2398)(Line 23 above) .....	0	0	0	0
2501. Section 9010 Special Surplus .....	XXX	XXX		0
2502. ....	XXX	XXX		
2503. ....	XXX	XXX		
2598. Summary of remaining write-ins for Line 25 from overflow page .....	XXX	XXX	0	0
2599. Totals (Lines 2501 through 2503 plus 2598)(Line 25 above) .....	XXX	XXX	0	0
3001. ....	XXX	XXX		
3002. ....	XXX	XXX		
3003. ....	XXX	XXX		
3098. Summary of remaining write-ins for Line 30 from overflow page .....	XXX	XXX	0	0
3099. Totals (Lines 3001 through 3003 plus 3098)(Line 30 above) .....	XXX	XXX	0	0

STATEMENT AS OF MARCH 31, 2022 OF THE SilverScript Insurance Company

**STATEMENT OF REVENUE AND EXPENSES**

	Current Year To Date		Prior Year To Date	Prior Year Ended December 31
	1 Uncovered	2 Total	3 Total	4 Total
1. Member Months	XXX	14,284,481	13,327,596	53,237,344
2. Net premium income ( including \$ non-health premium income)	XXX	402,295,327	399,931,983	1,636,739,792
3. Change in unearned premium reserves and reserve for rate credits	XXX	121,051,650	236,795,059	13,595,305
4. Fee-for-service (net of \$ medical expenses)	XXX			
5. Risk revenue	XXX			
6. Aggregate write-ins for other health care related revenues	XXX	(4,529)	4,207,154	16,257,334
7. Aggregate write-ins for other non-health revenues	XXX	0	0	0
8. Total revenues (Lines 2 to 7)	XXX	523,342,448	640,934,196	1,666,592,431
<b>Hospital and Medical:</b>				
9. Hospital/medical benefits		824	1,422	2,876
10. Other professional services				0
11. Outside referrals				
12. Emergency room and out-of-area				
13. Prescription drugs		653,169,609	788,763,973	1,528,454,926
14. Aggregate write-ins for other hospital and medical	0	0	0	0
15. Incentive pool, withhold adjustments and bonus amounts				173,946
16. Subtotal (Lines 9 to 15)	0	653,170,433	788,765,395	1,528,631,748
<b>Less:</b>				
17. Net reinsurance recoveries		124,742,590	153,967,787	287,767,934
18. Total hospital and medical (Lines 16 minus 17)	0	528,427,843	634,797,608	1,240,863,814
19. Non-health claims (net)				
20. Claims adjustment expenses, including \$ 2,422,807 cost containment expenses		36,504,370	37,513,609	158,478,536
21. General administrative expenses		41,017,780	39,479,346	167,392,628
22. Increase in reserves for life and accident and health contracts (including \$ increase in reserves for life only)				0
23. Total underwriting deductions (Lines 18 through 22)	0	605,949,993	711,790,563	1,566,734,978
24. Net underwriting gain or (loss) (Lines 8 minus 23)	XXX	(82,607,545)	(70,856,367)	99,857,453
25. Net investment income earned		51,272	34,412	124,917
26. Net realized capital gains (losses) less capital gains tax of \$		43		(28,022)
27. Net investment gains (losses) (Lines 25 plus 26)	0	51,315	34,412	96,895
28. Net gain or (loss) from agents' or premium balances charged off [(amount recovered \$ 35,378 ) (amount charged off \$ (1,505,044) )]		(1,469,666)	(319,577)	(38,706,085)
29. Aggregate write-ins for other income or expenses	0	0	0	0
30. Net income or (loss) after capital gains tax and before all other federal income taxes (Lines 24 plus 27 plus 28 plus 29)	XXX	(84,025,896)	(71,141,532)	61,248,263
31. Federal and foreign income taxes incurred	XXX	(17,645,438)	(14,939,721)	16,297,612
32. Net income (loss) (Lines 30 minus 31)	XXX	(66,380,458)	(56,201,811)	44,950,651
<b>DETAILS OF WRITE-INS</b>				
0601. Enhanced Medication Therapy Management (eMTM) revenue from CMS	XXX	(4,529)	4,207,154	16,257,334
0602.	XXX			
0603.	XXX			
0698. Summary of remaining write-ins for Line 6 from overflow page	XXX	0	0	0
0699. Totals (Lines 0601 through 0603 plus 0698)(Line 6 above)	XXX	(4,529)	4,207,154	16,257,334
0701.	XXX			0
0702.	XXX			
0703.	XXX			
0798. Summary of remaining write-ins for Line 7 from overflow page	XXX	0	0	0
0799. Totals (Lines 0701 through 0703 plus 0798)(Line 7 above)	XXX	0	0	0
1401.				0
1402.			0	0
1403.				
1498. Summary of remaining write-ins for Line 14 from overflow page	0	0	0	0
1499. Totals (Lines 1401 through 1403 plus 1498)(Line 14 above)	0	0	0	0
2901.				0
2902.			0	0
2903.				
2998. Summary of remaining write-ins for Line 29 from overflow page	0	0	0	0
2999. Totals (Lines 2901 through 2903 plus 2998)(Line 29 above)	0	0	0	0

**STATEMENT OF REVENUE AND EXPENSES (Continued)**

	1 Current Year to Date	2 Prior Year to Date	3 Prior Year Ended December 31
<b>CAPITAL AND SURPLUS ACCOUNT</b>			
33. Capital and surplus prior reporting year.....	1,044,009,263	1,006,719,503	1,006,719,503
34. Net income or (loss) from Line 32.....	(66,380,458)	(56,201,811)	44,950,651
35. Change in valuation basis of aggregate policy and claim reserves.....			
36. Change in net unrealized capital gains (losses) less capital gains tax of \$.....			
37. Change in net unrealized foreign exchange capital gain or (loss).....			
38. Change in net deferred income tax.....			6,455,566
39. Change in nonadmitted assets.....	15,339,685	(49,344,090)	(14,116,458)
40. Change in unauthorized and certified reinsurance.....	0	0	0
41. Change in treasury stock.....	0	0	0
42. Change in surplus notes.....	0	0	0
43. Cumulative effect of changes in accounting principles.....			
44. Capital Changes:			
44.1 Paid in.....			0
44.2 Transferred from surplus (Stock Dividend).....	0	0	0
44.3 Transferred to surplus.....			
45. Surplus adjustments:			
45.1 Paid in.....	0	0	0
45.2 Transferred to capital (Stock Dividend).....			
45.3 Transferred from capital.....			
46. Dividends to stockholders.....			
47. Aggregate write-ins for gains or (losses) in surplus.....	0	0	1
48. Net change in capital & surplus (Lines 34 to 47).....	(51,040,773)	(105,545,901)	37,289,760
49. Capital and surplus end of reporting period (Line 33 plus 48)	992,968,490	901,173,602	1,044,009,263
<b>DETAILS OF WRITE-INS</b>			
4701. Rounding.....		0	1
4702. ....			
4703. ....			
4798. Summary of remaining write-ins for Line 47 from overflow page.....	0	0	0
4799. Totals (Lines 4701 through 4703 plus 4798)(Line 47 above)	0	0	1

STATEMENT AS OF MARCH 31, 2022 OF THE SilverScript Insurance Company

**CASH FLOW**

	1 Current Year To Date	2 Prior Year To Date	3 Prior Year Ended December 31
<b>Cash from Operations</b>			
1. Premiums collected net of reinsurance .....	431,047,193	435,739,044	1,642,714,898
2. Net investment income .....	43,868	36,188	145,955
3. Miscellaneous income .....	(4,529)	4,207,154	16,257,334
4. Total (Lines 1 to 3) .....	431,086,532	439,982,386	1,659,118,187
5. Benefit and loss related payments .....	631,046,003	850,706,134	940,232,595
6. Net transfers to Separate Accounts, Segregated Accounts and Protected Cell Accounts .....			
7. Commissions, expenses paid and aggregate write-ins for deductions .....	(468,493,437)	(399,579,501)	568,160,882
8. Dividends paid to policyholders .....			
9. Federal and foreign income taxes paid (recovered) net of \$ ..... tax on capital gains (losses) .....	0	0	62,558,645
10. Total (Lines 5 through 9) .....	162,552,566	451,126,633	1,570,952,122
11. Net cash from operations (Line 4 minus Line 10) .....	268,533,966	(11,144,247)	88,166,065
<b>Cash from Investments</b>			
12. Proceeds from investments sold, matured or repaid:			
12.1 Bonds .....	0	0	3,500,000
12.2 Stocks .....	0	0	0
12.3 Mortgage loans .....	0	0	0
12.4 Real estate .....	0	0	0
12.5 Other invested assets .....	0	0	0
12.6 Net gains or (losses) on cash, cash equivalents and short-term investments .....	43	0	(3)
12.7 Miscellaneous proceeds .....	0	0	0
12.8 Total investment proceeds (Lines 12.1 to 12.7) .....	43	0	3,499,997
13. Cost of investments acquired (long-term only):			
13.1 Bonds .....	117,918	0	3,330,085
13.2 Stocks .....	0	0	0
13.3 Mortgage loans .....	0	0	0
13.4 Real estate .....	0	0	0
13.5 Other invested assets .....	0	0	0
13.6 Miscellaneous applications .....	0	0	0
13.7 Total investments acquired (Lines 13.1 to 13.6) .....	117,918	0	3,330,085
14. Net increase (or decrease) in contract loans and premium notes .....	0	0	0
15. Net cash from investments (Line 12.8 minus Line 13.7 and Line 14) .....	(117,875)	0	169,912
<b>Cash from Financing and Miscellaneous Sources</b>			
16. Cash provided (applied):			
16.1 Surplus notes, capital notes .....	0	0	0
16.2 Capital and paid in surplus, less treasury stock .....	0	0	0
16.3 Borrowed funds .....	0	0	0
16.4 Net deposits on deposit-type contracts and other insurance liabilities .....	0	0	0
16.5 Dividends to stockholders .....	0	0	0
16.6 Other cash provided (applied) .....	0	0	0
17. Net cash from financing and miscellaneous sources (Line 16.1 through Line 16.4 minus Line 16.5 plus Line 16.6) .....	0	0	0
<b>RECONCILIATION OF CASH, CASH EQUIVALENTS AND SHORT-TERM INVESTMENTS</b>			
18. Net change in cash, cash equivalents and short-term investments (Line 11, plus Lines 15 and 17) .....	268,416,091	(11,144,247)	88,335,977
19. Cash, cash equivalents and short-term investments:			
19.1 Beginning of year .....	304,700,555	216,364,578	216,364,578
19.2 End of period (Line 18 plus Line 19.1) .....	573,116,646	205,220,331	304,700,555

Note: Supplemental disclosures of cash flow information for non-cash transactions:

--	--	--	--

**EXHIBIT OF PREMIUMS, ENROLLMENT AND UTILIZATION**

	1 Total	Comprehensive (Hospital & Medical)		4 Medicare Supplement	5 Vision Only	6 Dental Only	7 Federal Employees Health Benefit Plan	8 Title XVIII Medicare	9 Title XIX Medicaid	10 Other
		2 Individual	3 Group							
<b>Total Members at end of:</b>										
1. Prior Year .....	4,481,262	0	0	5	0	0	0	0	0	4,481,257
2. First Quarter .....	4,769,191			5						4,769,186
3. Second Quarter .....	0									
4. Third Quarter .....	0									
5. Current Year	0									
6. Current Year Member Months	14,284,481			15						14,284,466
<b>Total Member Ambulatory Encounters for Period:</b>										
7. Physician .....	0									
8. Non-Physician .....	0									
9. Total	0	0	0	0	0	0	0	0	0	0
10. Hospital Patient Days Incurred	0									
11. Number of Inpatient Admissions	0									
12. Health Premiums Written (a) .....	507,021,922			2,300						507,019,622
13. Life Premiums Direct .....	0									
14. Property/Casualty Premiums Written .....	0									
15. Health Premiums Earned .....	655,593,487			2,300						655,591,187
16. Property/Casualty Premiums Earned .....	0									
17. Amount Paid for Provision of Health Care Services.....	781,443,169			684						781,442,485
18. Amount Incurred for Provision of Health Care Services	653,170,433			824						653,169,609

(a) For health premiums written: amount of Medicare Title XVIII exempt from state taxes or fees \$ .....507,019,622



**UNDERWRITING AND INVESTMENT EXHIBIT**

**ANALYSIS OF CLAIMS UNPAID - PRIOR YEAR - NET OF REINSURANCE**

Line of Business	Claims Paid Year to Date		Liability End of Current Quarter		5 Claims Incurred in Prior Years (Columns 1 + 3)	6 Estimated Claim Reserve and Claim Liability December 31 of Prior Year
	1 On Claims Incurred Prior to January 1 of Current Year	2 On Claims Incurred During the Year	3 On Claims Unpaid Dec. 31 of Prior Year	4 On Claims Incurred During the Year		
1. Comprehensive (hospital and medical) .....					0	0
2. Medicare Supplement .....	42	642	33	131	75	24
3. Dental Only .....					0	0
4. Vision Only .....					0	0
5. Federal Employees Health Benefits Plan .....					0	0
6. Title XVIII - Medicare .....					0	0
7. Title XIX - Medicaid .....					0	0
8. Other health .....	(214,313,181)	845,358,500			(214,313,181)	0
9. Health subtotal (Lines 1 to 8) .....	(214,313,139)	845,359,142	33	131	(214,313,106)	24
10. Healthcare receivables (a) .....	1,745,538	358,062,794			1,745,538	257,190,032
11. Other non-health .....					0	0
12. Medical incentive pools and bonus amounts .....					0	0
13. Totals (Lines 9-10+11+12)	(216,058,677)	487,296,348	33	131	(216,058,644)	(257,190,008)

(a) Excludes \$ ..... loans or advances to providers not yet expensed.

# Notes to Financial Statement

## 1. Summary of Significant Accounting Policies and Going Concern

### A. Accounting Practices

SilverScript Insurance Company (the “Company”), a Tennessee domiciled insurance company, is a wholly owned subsidiary of Part D Holding Company, L.L.C. (the “Parent”), and a wholly owned indirect subsidiary of CVS Health Corporation (the “Ultimate Parent”). The financial statements of the Company are presented on the basis of accounting practices prescribed or permitted by the Tennessee Department of Commerce and Insurance (the “Department” or (TDCI)).

The Department recognizes only statutory accounting practices prescribed or permitted by the State of Tennessee for determining and reporting the financial condition and results of operations of an insurance company and for determining its solvency under Tennessee Insurance Law. The National Association of Insurance Commissioners’ (“NAIC”) *Accounting Practices and Procedures Manual* has been adopted as a component of prescribed or permitted practices by the State of Tennessee.

A reconciliation of the Company’s net income and capital and surplus between NAIC SAP and its practices prescribed and permitted by the State of Tennessee is shown below:

<u>NET INCOME:</u>	<u>SSAP#</u>	<u>F/S Page</u>	<u>F/S Line#</u>	<u>Three months Ending March 31, 2022</u>	<u>Year Ending December 31, 2021</u>
(1) SilverScript State Basis (Page 4, Line 32, Column 2 & 4)				\$ (66,380,458)	\$ 44,950,651
(2) State Prescribed Practices that increase (decrease) NAIC SAP					
(3) State Permitted Practices that increase (decrease) NAIC SAP					
(4) NAIC SAP (1-2-3=4)				\$ (66,380,458)	\$ 44,950,651
<u>SURPLUS:</u>				<u>March 31, 2022</u>	<u>December 31, 2021</u>
(5) SilverScript State Basis (Page 3, Line 33, Column 3 & 4)				\$ 992,968,490	\$ 1,044,009,263
(6) State Prescribed Practices that increase (decrease) NAIC SAP					
(7) State Permitted Practices that increase (decrease) NAIC SAP					
(8) NAIC SAP (5-6-7=8)				\$ 992,968,490	\$ 1,044,009,263

### B. Use of Estimates in the Preparation of the Financial Statements

The preparation of financial statements in conformity with the *Annual Statement Instructions* and Statutory Accounting Principles requires management to make estimates and assumptions that affect amounts reported on the financial statements and accompanying notes. Such estimates and assumptions could change in the future as more information becomes known, which could impact the amounts reported and disclosed herein. It also requires disclosure of contingent assets and liabilities at the date of the financial statements and the reported amounts of revenue and expenses during the period.

### C. Accounting Policy

The Company has adopted accounting policies with respect to particular accounts or transactions which could materially affect its assets, liabilities, capital and surplus or results of operations as follows:

- (1) Short-term investments, including bonds with an original purchase maturity date of less than one year but greater than three months, are stated at amortized cost using the scientific interest method of amortization on premiums or discounts. Cash Equivalents include money market holdings that are stated at fair value, and bonds with an original purchase maturity date of less than three months that are stated at amortized cost using the scientific interest method of amortization on premiums or discounts and are classified as cash equivalents.

# Notes to Financial Statement

## 1. Summary of Significant Accounting Policies and Going Concern (continued)

- (2) Bonds with an original purchase maturity date greater than one year are stated at amortized cost using the scientific interest method of amortization on premiums or discounts.
- (3) As of March 31, 2022 and December 31, 2021, the Company had 10.0 million shares, (\$1 par), of Class A common capital stock authorized, and 2.75 million of such shares issued and outstanding.
- (4) Preferred Stocks: None
- (5) Mortgage Loans: None
- (6) Loan-backed Securities: None
- (7) Investment in Subsidiaries, Controlled and Affiliated Companies: None
- (8) Joint Ventures, Partnerships, and Limited Liability Companies: None
- (9) Derivatives: None
- (10) The Company does not utilize anticipated investment income as a factor in determining premium deficiencies.
- (11) The Company has recorded estimates of incurred but not reported claims for claims paid by external entities and subsequently billed to the Company. Incurred but not reported claims (IBNR) are estimated based on historical experience. Prescription drug claims under Medicare Part D business are typically reported and adjudicated within a very short period of time and the unreported claims are negligible.
- (12) The Company has not modified its capitalization policy from the prior period.
- (13) Amounts recorded in the Company's financial statements for pharmaceutical rebates are determined based on the amounts CVS Caremark Part D Services, L.L.C. ("Part D Services"), an affiliate of the Parent Company, expects to collect from various pharmaceutical manufacturers.

D. Going Concern: Not Applicable

## 2. Accounting Changes and Corrections of Errors

Accounting Changes: None

Corrections of Errors: None

## 3. Business Combinations and Goodwill

- A. Statutory Purchase Method: None
- B. Statutory Merger: None
- C. Assumption Reinsurance: None
- D. Impairment Loss: None
- E. Subcomponents and Calculation of Adjusted Surplus and Total Admitted Goodwill: None

## 4. Discontinued Operations

None

## 5. Investments

- A. Mortgage Loans, including Mezzanine Real Estate Loans: None
- B. Debt Restructuring: None
- C. Reverse Mortgages: None
- D. Loan Backed Securities: None
- E. Dollar Repurchase Agreements and/or Securities Lending Transactions: None
- F. Repurchase Agreements Transactions Accounted for as Secured Borrowing: None
- G. Reverse Repurchase Agreements Transactions Accounted for as Secured Borrowing: None
- H. Repurchase Agreements Transactions Accounted for as a Sale: None

# Notes to Financial Statement

## 5. Investments (continued)

- I. Reverse Repurchase Agreements Transactions Accounted for as a Sale: None
- J. Real Estate: None
- K. Low-Income Housing Tax Credits (“LIHTC”): None
- L. Restricted Assets:

Restricted Asset Category	1 Total Gross (Admitted & Nonadmitted) Restricted from Current Year	2 Total Gross (Admitted & Nonadmitted) Restricted from Prior Year	3 Increase/(Decrease) (1 minus 2)	4 Total Current Year Nonadmitted Restricted	5 Total Current Year Admitted Restricted (1 minus 4)	6 Gross (Admitted & Nonadmitted) Restricted to Total Assets	7 Admitted Restricted to Total Admitted Assets
a. Subject to contractual obligation for which liability is not shown	\$ 0	\$ 0	\$ 0	\$ 0	\$ 0	0.000 %	0.000 %
b. Collateral held under security lending agreements	0	0	0	0	0	0.000	0.000
c. Subject to repurchase agreements	0	0	0	0	0	0.000	0.000
d. Subject to reverse repurchase agreements	0	0	0	0	0	0.000	0.000
e. Subject to dollar repurchase agreements	0	0	0	0	0	0.000	0.000
f. Subject to dollar reverse repurchase agreements	0	0	0	0	0	0.000	0.000
g. Placed under option contracts	0	0	0	0	0	0.000	0.000
h. Letter stock or securities restricted as to sale – excluding FHLB capital stock	0	0	0	0	0	0.000	0.000
i. FHLB capital stock	0	0	0	0	0	0.000	0.000
j. On deposit with states	3,389,643	3,034,125	85,518	0	3,389,643	0.102	0.000
k. On deposit with other regulatory bodies	605,056	610,356	(5,300)	0	605,056	0.018	0.000
l. Pledged collateral to FHLB (including assets backing funding agreements)	0	0	0	0	0	0.000	0.000
m. Pledged as collateral not captured in other categories	0	0	0	0	0	0.000	0.000
n. Other restricted assets	0	0	0	0	0	0.000	0.000
o. Total Restricted Assets	\$ 3,994,699	\$ 3,914,481	\$ (54,461)	0	\$ 3,914,481	0.121%	0.000%

- (1) Restricted Assets (Including Pledged)
- (2) Detail of Assets Pledged as Collateral Not Captured in Other categories: None
- (3) Detail of Other Restricted Assets: None
- (4) Collateral received and reflected as assets within the reporting entity’s financial statements: None

- M. Working Capital Finance Investments: None
- N. Offsetting and Netting of Assets and Liabilities: None
- O. 5GI Securities: None
- P. Short Sales: None

# Notes to Financial Statement

## 5. Investments (continued)

- Q. Prepayment Penalty and Acceleration Fees: None
- R. Reporting Entity's Share of Cash Pool by Asset Type.

Asset Type	Percent Share
(1) Cash	-4.12%
(2) Cash Equivalents	104.12%
(3) Short Term Investments	0.0%
(4) Total	100.0%

## 6. Joint Ventures, Partnerships and Limited Liability Companies

- A. The Company has no investments in Joint Ventures, Partnerships or Limited Liability Companies that exceed 10% of its admitted assets.
- B. The Company did not recognize any impairment write-down for its investments in Joint Ventures, Partnerships and Limited Liability Companies during the statement periods.

## 7. Investment Income

- A. Due and accrued income was excluded from surplus on the following basis:
- All investment income due and accrued with amounts over 90 days past due are excluded from surplus.
- B. The total amount excluded was: None

## 8. Derivative Instruments

None

## 9. Income Taxes

No material changes

## 10. Information Concerning Parent, Subsidiaries, Affiliates and Other Related Parties

- A & B. In December 2021, the Company received a prepaid performance net rebate in the amount of \$500 million from Part D Services with approval from the Department. The Company did not have any other material transactions during the first three months of 2022 and the year ending December 31, 2021 with its parent, subsidiaries, and affiliates. Reinsurance transactions, non-insurance transactions involving less than ½ of 1% of the Company's total admitted assets, and cost allocation transactions are excluded.
- C. Transactions with related parties who are not reported on Schedule Y: No other material transactions with related parties which are not reported on Schedule Y.
- D. The Company reported a gross receivable of \$120.9 million and \$158.1 million from affiliates on line 23 of page 2 as of March 31, 2022 and December 31, 2021, respectively.
- E. The following is a description of management and service contracts and cost sharing agreements involving the Company and any related party:

In general, the Company relies on its Parent Company and other affiliates under common control of the Ultimate Parent for all support and operations functions. For specific owner/affiliate relationships, please refer to the Organizational Chart contained in Schedule Y.

For the Company's Medicare Part D business, except for amounts due to PDPs, all claims paid and incurred are based on amounts billed by the Parent Company and its affiliates for pharmacy claims filled by pharmacies in the Parent Company's pharmacy network or claims submitted to the Parent Company for pharmacy claims paid by state agencies. Additionally, all pharmaceutical rebates are received or are recorded as a receivable from Part D Services, which contracts with pharmaceutical manufacturers for such rebates.

Aetna Health Management, L.L.C. ("Aetna Health Management"), an affiliate, provides the services or arranges services from third parties to manage and support the Company's Medicare Supplement business and certain Medicare Part D functions.

As of March 31, 2022 and December 31, 2021, the Company reported a net receivable of \$89.6 million and \$94.9 million due from the Parent Company and its affiliates, respectively.

# Notes to Financial Statement

## 10. Information Concerning Parent, Subsidiaries, Affiliates and Other Related Parties (continued)

The following is a summary of the financial statement presentation of amounts due from and to the Company's Parent and affiliates.

<b>Assets, Liabilities, Capital and Surplus</b>	<b><u>March 31, 2022</u></b>	<b><u>December 31, 2021</u></b>
<i>Taxes payable (lines 9 &amp; 10.1)/(tax recoverable, line 18.1)</i>	\$ (2,009,930)	\$ 17,464,211
<i>Ceded reinsurance premiums payable (line 11) / (amounts recoverable from reinsurers) (line 16.1)</i>	33,268,734	45,785,884
<i>Amounts due / (from) to parent, subsidiaries and affiliates (Page 2, Line 23, Column 1)</i>	(120,870,310)	(158,149,889)
	<u>\$ (89,611,506)</u>	<u>\$ (94,899,794)</u>

*Amounts due (from) and to parent, subsidiaries and affiliates* is primarily comprised of amounts due for pharmacy claims processed, management fees from Part D Services and intercompany funding. As of March 31, 2022, the Company reported a receivable from affiliates of \$120.9 million, primarily as a result of prefunding of claims activity from Part D Services, offset by unsettled intercompany payables. The prefunding amount was released with the claim's payments in the first week of April 2022. As of December 31, 2021, the Company reported a receivable from affiliates of \$158.1 million, primarily as a result of prefunding of claims activity from Part D Services. The prefunding amount was released with the claim's payments in the first week of January of the following year. *Ceded reinsurance premiums payable* or *amounts recoverable from reinsurers* is related to the Company's reinsurance agreement with CVS Caremark Indemnity, Ltd. and Accendo Insurance Company (Accendo). Both are affiliates of the Company.

Before January 1, 2020, the Company paid Part D Services management fees for sales, accounting, tax, legal, information technology, compliance, claims processing and other administrative functions under a management services agreement that had been filed with the Department. Effective January 1, 2020, the Company amended the management services agreement with Part D Services, kept most of services intact but removed the services related to finance, actuarial and underwriting, and Medicare Part D management operations, etc. from its administrative services agreement with Part D Services. The management fee was assessed on a per-member, per-month ("pmpm") and a per claim basis. Effective January 1, 2021, management fee is primarily assessed on a per claim basis based on amended services agreement. A new administrative services agreement was entered with Aetna Health Management, effective January 1, 2020. Per this new agreement, Aetna Health Management, replaced Part D Services to provide the services, or arrange services from third parties related to finance, actuarial and underwriting, and Medicare Part D management operations to the Company. Additional services have been provided by Aetna Health Management according to the Amendment, effective January 1, 2021. The fees charged by Aetna Health Management are primarily based on the full time equivalent (FTE) time allocation or actual expenses incurred. Management agreements have been filed with the Department.

In addition, related to the Company's reinsurance agreement with CVS Caremark Indemnity, Ltd. and Accendo, the Company recognizes a reduction of expenses related to ceded expenses.

The following is a summary of the financial statement presentation of management fees incurred from Part D Services and reinsurance expenses ceded to the CVS Caremark Indemnity, Ltd. and Accendo.

<b>Statement of Revenue and Expenses</b>	<b><u>March 31, 2022</u></b>	<b><u>March 31, 2021</u></b>
Management fee		
<i>Claims adjustment expenses(line 20)</i>	\$ 62,464,376	\$ 68,755,725
<i>General and administrative expenses (line 21)</i>	60,088,504	48,242,192
Total management fee	<u>\$ 122,552,880</u>	<u>\$ 116,997,917</u>
Reinsurance expenses ceded		
<i>Claims adjustment expenses(line 20)</i>	\$ 4,251,074	\$ 9,730,129
<i>General and administrative expenses (line 21)</i>	15,768,863	10,217,332
Total reinsurance expenses ceded	<u>\$ 20,019,937</u>	<u>\$ 19,947,462</u>

Payment terms require the Company to settle with Part D Services all invoiced amounts for claims and service fees thirty days in arrears after the Company receives an invoice. The settlement of pharmaceutical rebates happens within ninety days of the beginning of the calendar quarter following receipt of such rebates by Part D Services.

# Notes to Financial Statement

## 10. Information Concerning Parent, Subsidiaries, Affiliates and Other Related Parties (continued)

Payment terms related to performance network rebates require Part D Services to collect network performance rebates from participating pharmacies and providers and remit them

to the Company. Effective starting with calendar year 2021, the Company has an option to receive performance network rebates earlier based on Part D Services' estimate prior to the end of each calendar year. Part D Services will calculate the actual Performance Rebates upon receipt of the payments from the participating pharmacies and providers. The Company will true up the payments with Part D Services based on actual Performance Rebates earned during the calendar year. In December 2021, the Company received a prepaid performance network rebate in the amount of \$500 million from Part D Services. No prepaid performance network rebate was received in the first three months of 2022.

Payment terms require the Company to settle with Aetna Health Management within 15 calendar days after the end of each calendar month and in no event more than 45 calendar days after the end of each calendar quarter.

The Company has a written tax-sharing agreement with the Ultimate Parent, and its allocation of the Ultimate Parent's federal and state income and premium taxes is based on the Company's federal and state tax liability determined as if the Company were filing its own separate tax return each year. The Company's tax sharing agreement with the Ultimate Parent provides that the Ultimate Parent will pay the Company for its net operating losses to the extent that such net operating loss is utilized in the reduction of the consolidated federal income tax liability.

As of March 31, 2022 the Company was owed \$1.3 million from the Ultimate Parent and as of December 31 2021 the Company owed the Ultimate Parent \$16.3 million, for federal income taxes, which is reported as *Current federal and foreign income tax recoverable and current federal and foreign income tax payable* in the Statement of Liabilities, Capital and Surplus, respectively. As of March 31, 2022 the Company was owed \$0.7 million from the Ultimate Parent and as of December 31 2021 the Company owed the Ultimate Parent \$1.2 million, for state taxes, which is reported as *general expenses due or accrued* in the Statement of Liabilities, Capital and Surplus. Intercompany tax balances are settled annually. During the first quarter of 2022 and the year ending December 31, 2021, the Company didn't enter any Sale and Purchase Agreement with its affiliates.

- F. The Company does not have any guarantees or undertakings for the benefit of an affiliate, which result in a material contingent exposure of the Company's or any related party's assets or liabilities.
- G. All outstanding shares of the Company are owned by the Parent Company.
- H. The Company does not own shares of stock of its Parent Company.
- I. The Company does not hold any interest in another company or limited partnership.
- J. The Company did not recognize any impairment write-down for its investments in Subsidiary, Controlled or Affiliated Companies during the statement period.
- K. The Company does not have any investments in a foreign insurance subsidiary.
- L. The Company did not have any investments in a downstream non-insurance holding company.
- M. The Company does not have any subsidiary, controlled and affiliated (SCA) investments.
- N. The Company does not have any investments in insurance SCA's.
- O. SCA and SSAP No.48 Loss Tracking: Not applicable

## 11. Debt

None

## 12. Retirement Plans, Deferred Compensation, Postemployment Benefits and Compensated Absences and Other Postretirement Benefit Plans

No change.

## 13. Capital and Surplus, Shareholders' Dividend Restrictions and Quasi-Reorganizations

- A. As of March 31, 2022 and December 31, 2021, the Company had 10.0 million shares, (\$1 par), of Class A common c capital stock authorized, and 2.75 million of such shares issued and outstanding.
- B. The Company has no preferred stock outstanding.
- C. Without prior approval of the domiciliary commissioner, dividends to shareholders are limited by the laws of Tennessee and are based on the restrictions relating to statutory surplus.
- D. No dividends were declared and paid by the Company during the first three months of 2022 and the year of 2021.

# Notes to Financial Statement

## 13. Capital and Surplus, Shareholders' Dividend Restrictions and Quasi-Reorganizations (continued)

- E. The portion of the Company's profits that may be paid as ordinary dividends is limited by the laws of Tennessee. Tennessee law states that ordinary dividends must follow Tennessee Code Ann. § 56-11-105(e) and Tennessee Code Ann. § 56-11-106(b) for extraordinary dividends. Ordinary dividends are limited to the greater of ten percent of surplus or the net gain from operations for previous twelve months.
- F. The Company is subject to certain Risk-Based Capital ("RBC") requirements as specified by the NAIC. Under those requirements, the amount of capital and surplus maintained by a life/health insurance company is to be determined based on the various risk factors related to it. As of March 31, 2022 and December 31, 2021, there were no restrictions placed on the unassigned funds (surplus).
- G. The Company has no mutual reciprocals or any similarly organized entities.
- H. The Company does not hold any stock of the Ultimate Parent, including stock of affiliated entities for special purposes.
- I. The Company had no special surplus as of March 31, 2022 and December 31, 2021.
- J. As of March 31, 2022 and December 31, 2021, the Company had no unrealized gains or losses.
- K. The Company did not issue any surplus debenture of similar obligations.
- L. The Company did not experience an impact of any restatement due to prior quasi-reorganization.
- M. Not applicable.

## 14. Liabilities, Contingencies and Assessments

- A. Contingent Commitments: None
- B. Assessments: None
- C. Gain Contingencies: None
- D. Claims Related Extra Contractual Obligation and Bad Faith Losses Stemming from Lawsuits: None
- E. Joint and Several Liabilities: None
- F. All Other Contingencies:
  - a. Bad debt write-offs, net of recoveries, totaled \$1.5 million and \$320 thousand for the first quarter of March 31, 2022 and 2021, respectively. These balances were previously reported as non-admitted assets.

## 15. Leases

- A. Lessee Operating Lease: None
- B. Lessor Leases: None

## 16. Information about Financial Instruments with Off-Balance-Sheet Risk and Financial Instruments with Concentrations of Credit Risk

None

## 17. Sale, Transfer and Servicing of Financial Assets and Extinguishments of Liabilities

- A. Transfers of Receivables Reported as Sales: None
- B. Transfer and Servicing of Financial Assets: None
- C. Wash Sales: None

## 18. Gain or Loss to the Reporting Entity from Uninsured Plans and the Uninsured Portion of Partially Insured Plans

- A. ASO Plans: None
- B. ASC Plans

The Company has several Administrative Services Contracts ("ASC") with Self-Funded Employer Group Waiver Plans ("SF EGWPs").

For the first three months ending March 31, 2022 and 2021 the gain from operations from ASC uninsured plans is as follows:

# Notes to Financial Statement

## 18. Gain or Loss to the Reporting Entity from Uninsured Plans and the Uninsured Portion of Partially Insured Plans (continued)

### March 31, 2022

	<u>ASC Uninsured Plans</u>	<u>Uninsured Portion of Partially Insured Plans</u>	<u>Total ASC</u>
a. Gross reimbursement for medical costs incurred	\$ 1,163,535,874	\$ -	\$ 1,163,535,874
b. Gross administrative fees accrued	26,934,159	-	26,934,159
c. Other income or expense (including interest paid to or received from plans)	-	-	-
d. Gross expenses incurred (claims and administrative)	<u>(1,189,506,549)</u>	<u>-</u>	<u>(1,189,506,549)</u>
e. Total Net Operations	<u>\$ 963,484</u>	<u>\$ -</u>	<u>\$ 963,484</u>

### March 31, 2021

	<u>ASC Uninsured Plans</u>	<u>Uninsured Portion of Partially Insured Plans</u>	<u>Total ASC</u>
a. Gross reimbursement for medical costs incurred	\$ 1,079,817,055	\$ -	\$ 1,079,817,055
b. Gross administrative fees accrued	26,976,459	-	26,976,459
c. Other income or expense (including interest paid to or received from plans)	-	-	-
d. Gross expenses incurred (claims and administrative)	<u>(1,105,798,223)</u>	<u>-</u>	<u>(1,105,798,223)</u>
e. Total Net Operations	<u>\$ 995,291</u>	<u>\$ -</u>	<u>\$ 995,291</u>

### C. Medicare and other Similarly Structured Cost Based Reimbursement Contract:

- (1) Revenue and prescription drug amounts for the three months ending March 31, 2022 and 2021, exclude \$2,582.0 million and \$2,433.8 million, respectively, in subsidies from the Centers for Medicare and Medicaid Services ("CMS") for catastrophic reinsurance subsidies, low-income cost sharing subsidies ("LICS") and the coverage gap discount program ("CGDP") pursuant to the Company's contracts with CMS.
- (2) As of March 31, 2022 and December 31, 2021, the admitted *amounts receivable relating to uninsured plans* includes the following:

	<u>03/31/2022</u>	<u>12/31/2021</u>
CMS settlements - 2020	\$ 28,769,360	\$ 671,157,661
CMS settlements- 2021	1,097,940,818	783,116,525
Coverage gap discount receivable	376,486,723	703,378,799
Unbilled group receivable	317,129,244	291,200,705
Rx Rebate Receivable for uninsured plan	<u>-</u>	<u>3,422,536</u>
Total amounts receivable related to uninsured plans	<u>\$ 1,820,326,145</u>	<u>\$ 2,452,276,226</u>

These CMS settlements are related to LICS, drugs covered by the catastrophic reinsurance feature and unsettled coverage discount payments from CMS. Settlement amounts due to or from CMS for a plan year for LICS and drugs covered by the catastrophic reinsurance feature are typically settled in the fourth quarter of the following year. As of March 31, 2022 and December 31, 2021, the Company recorded a CMS settlement receivable of \$1,097.9 million and \$783.1 million for the plan year 2021, respectively. As of March 31, 2022, and December 31, 2021, the Company recorded a CMS settlement receivable of \$28.8 million and \$671.2 million for the plan year 2020, respectively. The CMS settlement for plan year 2020 wasn't settled until January 2022 in accordance with CMS settlement calendar.

Coverage gap discount receivable represents amounts invoiced or to be invoiced by CMS to pharmaceutical manufacturers on the Company's behalf. Fluctuations in this balance are due to the timing of when CMS invoices the pharmaceutical manufacturers and when collections are received by the Company.

Unbilled group receivables primarily represent the last week of claims for the month that are billed to the respective SF EGWPs the first week of the following month.

As of March 31, 2022 and December 31, 2021, *amounts payable relating to uninsured plans* includes the following:

# Notes to Financial Statement

## 18. Gain or Loss to the Reporting Entity from Uninsured Plans and the Uninsured Portion of Partially Insured Plans (continued)

	<u>3/31/2022</u>	<u>12/31/2021</u>
CMS Settlement - 2022	\$ 853,870,261	\$ -
Reopener payables	71,550,025	82,205,605
SF EGWP client payables	1,203,213,878	2,062,986,913
Total amounts payable related to uninsured plans	<u>\$ 2,128,634,164</u>	<u>\$ 2,145,192,518</u>

Reopener payables represent accruals for prior plan years that are due back to CMS and are the results of retroactivities that happen after the initial settlement with CMS. Reopeners are settled with CMS according to CMS timetable which is approximately 5 years after the initial settlement with CMS.

SF EGWP client payables represent the amounts due back to SF EGWP clients for LICS and reinsurance subsidies the Company will collect from CMS on their behalf. The Company expects to collect the LICS and reinsurance subsidies in the fourth quarter of the following plan year and the Company will settle the payable to SF EGWPs at that time. The balance also includes the rebates collected from pharmaceutical manufacturers on the client's behalf.

- (3) As of March 31, 2022 and 2021, there were no allowances or reserves for adjustment of recorded revenues.
- (4) The Company has made no adjustment to revenue resulting from audits of receivables related to revenues recorded in the prior period.

## 19. Direct Premium Written/Produced by Managing General Agents/Third Party Administrators

None

## 20. Fair Value Measurements

SSAP 100R, *Fair Value*, defines fair value, establishes a framework for measuring fair value under accounting principles generally accepted in the United States, and enhances disclosures about fair value measurements. SSAP 100R provides guidance on how to measure fair value when required under existing accounting standards.

The Statement establishes a fair value hierarchy that prioritizes the inputs to valuation techniques used to measure fair value into three broad levels ("Level 1, 2 and 3") and net asset value (NAV) after initial recognition.

Level 1 inputs are observable inputs that reflect quoted prices for identical assets or liabilities in active markets the Company has the ability to access at the measurement date. Level 2 inputs are observable inputs, other than quoted prices included in Level 1, for the asset or liability. Level 3 inputs are unobservable inputs reflecting the Company's estimates of the assumptions that market participants would use in pricing the asset or liability (including assumptions about risk).

The hierarchy requires the use of market observable information when available for assessing fair value. As the fair value of the Company's U.S. Treasury securities are based on unadjusted market prices, they are classified within Level 1.

The following methods and assumptions were used by the Company in estimating the "fair value" disclosures for financial instruments in the accompanying financial statements and notes thereto:

*Cash, cash equivalents and short-term investments:* The carrying amounts reported in the accompany balance sheets for these financial instruments approximate their fair values.

*Investment Securities:* Fair values for bonds are based on the price that would be received to sell an asset or would be paid to transfer a liability in an orderly transaction between market participants at the measurement date.

The Company utilizes the three-level valuation hierarchy for the recognition and disclosure of fair value measurements. The categorization of assets and liabilities within this hierarchy is based upon the lowest level of input that is significant to the measurement of fair value. The three levels of the hierarchy consist of the following

- *Level 1* - Inputs to the valuation methodology are unadjusted quoted prices in active markets for identical assets or liabilities that the Company has the ability to access at the measurement date.
- *Level 2* - Inputs to the valuation methodology are quoted prices for similar assets and liabilities in active markets, quoted prices in markets that are not active or inputs that are observable for the asset or liability, either directly or indirectly, for substantially the full term of the instrument.
- *Level 3* - Inputs to the valuation methodology are unobservable inputs based upon management's best estimate of inputs market participants could use in pricing the asset or liability at the measurement date, including assumptions about risk.

Investment reported at NAV is not captured within fair value hierarchy, but separately identified.

# Notes to Financial Statement

## 20. Fair Value Measurements (continued)

A.

(1) Fair Value Measurements at Reporting Date:

### March 31, 2022

Description for each class of asset or liability	(Level 1)	(Level 2)	(Level 3)	Net Asset Value (NAV)	Total
Assets at fair value					
Cash	\$ (23,589,028)	\$ -	\$ -	\$ -	\$ (23,589,028)
Cash equivalents	596,690,797	14,877	-	-	596,705,674
Total Assets at fair value/NAV	\$ 573,101,769	\$ 14,877	\$ -	\$ -	\$ 573,116,646

### December 31, 2021

Description for each class of asset or liability	(Level 1)	(Level 2)	(Level 3)	Net Asset Value (NAV)	Total
Assets at fair value					
Cash	\$ (20,623,320)	\$ -	\$ -	\$ -	\$ (20,623,320)
Cash equivalents	325,320,866	3,009	-	-	325,323,875
Total Assets at fair value/NAV	\$ 304,697,546	\$ 3,009	\$ -	\$ -	\$ 304,700,555

There have been no transfers between Level 1 and Level 2 of the Fair Value Hierarchy in the current reporting period.

- (2) Fair Value Measurement (Level 3) of the Fair Value Hierarchy: Not Applicable
- (3) Fair Value Measurement (Level 3) Transfers: Not Applicable
- (4) Inputs for Valuation of Fair Value of Level 2 and Level 3 Investments: Bank valuation provided in monthly statements is utilized to estimate fair market value.
- (5) Fair Value of Derivative Assets and Liabilities: Not Applicable

B. Other Accounting Pronouncements: Not Applicable

C. Aggregate fair value for all financial instruments at reporting date:

### March 31, 2022

Type of Financial Instrument	Aggregate Fair Value	Admitted Assets	(Level 1)	(Level 2)	(Level 3)	Net Asset Value (NAV)	Not Practicable (Carrying Value)
Bonds	\$ 3,797,839	\$ 4,029,025	\$ 3,210,821	\$ 587,018	\$ -	\$ -	\$ -
Cash	\$ (23,589,028)	\$ (23,589,028)	\$ (23,589,028)	\$ -	\$ -	\$ -	\$ -
Cash equivalents	\$ 596,705,674	\$ 596,705,674	\$ 596,690,797	\$ 14,877	\$ -	\$ -	\$ -

### December 31, 2021

Type of Financial Instrument	Aggregate Fair Value	Admitted Assets	(Level 1)	(Level 2)	(Level 3)	Net Asset Value (NAV)	Not Practicable (Carrying Value)
Bonds	\$ 3,892,932	\$ 3,914,481	\$ 3,266,676	\$ 626,255	\$ -	\$ -	\$ -
Cash	\$ (20,623,320)	\$ (20,623,320)	\$ (20,623,320)	\$ -	\$ -	\$ -	\$ -
Cash equivalents	\$ 325,323,875	\$ 321,694,136	\$ 325,320,866	\$ 3,009	\$ -	\$ -	\$ -

D. Not Practicable to Estimate Fair Value

As of March 31, 2022 and December 31, 2021, the Company did not own any financial instruments that were not practicable to estimate fair value.

# Notes to Financial Statement

## 20. Fair Value Measurements (continued)

Money market funds in active markets are classified within Level 1 as fair values are based on quoted market prices.

As of March 31, 2022 and December 31, 2021 and bonds with an admitted asset value of \$4.0 million and \$3.9 million, respectively, were on deposit with state insurance and other departments to satisfy regulatory requirements.

Management regularly reviews the value of the Company's investments. If the value of any investment falls below its cost basis, the decline is analyzed to determine whether it is an other-than-temporary decline in value. To make this determination for each security, the following is considered:

- The length of time and the extent to which the fair value has been below cost;
- The financial condition and near-term prospects of the issuer of the security, including any specific events that may affect its operations or earnings potential; and
- Management's intent and ability to hold the security long enough for it to recover its value.

Based on that analysis, management makes a judgment as to whether the loss is other-than-temporary. If the loss is other-than-temporary, an impairment charge is recorded within net realized investment gains (losses) in the statements of operations in the period the determination is made. During the first quarter of 2022 and 2021, the Company did not recognize any capital gains or losses related to long term bonds.

E. Investments Measured Using the NAV Practical Expedient: Not applicable

## 21. Other Items

- A. Unusual or Infrequent Items: None
- B. Troubled Debt Restructuring - Debtors: None
- C. Other Disclosures: The Coronavirus Disease 2019 ("COVID-19") pandemic continues to evolve. The Company believes COVID-19's impact on the Company's businesses, operating results, cash flows and/or financial condition primarily will be driven by the geographies impacted and the severity and duration of the pandemic; the pandemic's impact on the U.S. and global economies and consumer behavior and health care utilization patterns; and the timing, scope and impact of stimulus legislation as well as other federal, state and local governmental responses to the pandemic. Those primary drivers are beyond the Company's knowledge and control. As a result, the impact COVID-19 will have on the Company's businesses, operating results, cash flows and/or financial condition is uncertain, but the impact could be adverse and material. COVID-19 also may result in legal and regulatory proceedings, investigations and claims against the Company.
- D. Business Interruption Insurance Recoveries: None
- E. State Transferable and Non-transferable Tax Credits: None
- F. Subprime-Mortgage-Related Risk Exposure: None
- G. Retained Assets: None
- H. Insurance Linked Securities (ILS) Contracts: None
- I. The Amount That Could Be Realized on Life Insurance Where the Reporting Entity is Owner and Beneficiary or Has Otherwise Obtained Rights to Control the Policy: Not Applicable

## 22. Events Subsequent

### Type I - Recognized Subsequent Events

Subsequent events have been considered through May 11, 2022 for the statutory statement issued on May 12, 2022.

The Company had no known reportable recognized subsequent events.

### Type II - Nonrecognized Subsequent Events

Subsequent events have been considered through May 11, 2022 for the statutory statement issued on May 12, 2022.

# Notes to Financial Statement

## 23. Reinsurance

### A. Ceded Reinsurance Report

#### Section 1 – General Interrogatories

(1) Are any of the reinsurers, listed in Schedule S as non-affiliated, owned in excess of 10% or controlled, either directly or indirectly, by the company or by any representative, officer, trustee, or director of the company?

Yes ( ) No (X)

If yes, give full details. N/A

(2) Have any policies issued by the company been reinsured with a company chartered in a country other than the United States (excluding U.S. branches of such companies) that is owned in excess of 10% or controlled directly or indirectly by an insured, a beneficiary, a creditor or an insured or any other person not primarily engaged in the insurance business?

Yes ( ) No (X)

If yes, give full details. N/A

#### Section 2 – Ceded Reinsurance Report – Part A

(1) Does the company have any reinsurance agreements in effect under which the reinsurer may unilaterally cancel any reinsurance for reasons other than nonpayment of premium or other similar credit?

Yes ( ) No (X)

(2) Does the reporting entity have any reinsurance agreements in effect such that the amount of losses paid or accrued through the statement date may result in a payment to the reinsurer of amounts that, in aggregate and allowing for offset of mutual credits from other reinsurance agreements with the same reinsurer, exceed the total direct premium collected under the reinsured policies?

Yes ( ) No (X)

#### Section 3 – Ceded Reinsurance Report – Part B

(1) What is the estimated amount of the aggregate reduction in surplus, (for agreements other than those under which the insurer may unilaterally cancel for reasons other than for nonpayment of premium or other similar credits that are reflected in Section 2 above) of termination of ALL reinsurance agreements, by either party, as of the date of this statement? Where necessary, the company may consider the current or anticipated experience of the business reinsured in making this estimate. N/A.

(2) Have any new agreements been executed or existing agreements amended, since January 1 of the year of this statement, to include policies or contracts that were in force or which had existing reserves established by the company as of the effective date of the agreement?

Yes ( ) No (X)

The Company has a quota share reinsurance agreement with an affiliate of the Parent Company, CVS Caremark Indemnity, Ltd., a Bermuda domiciled insurer. Under the terms of this agreement, the Company cedes a percentage of the Company's share of the risk associated with individual and group premiums, claims and administrative expenses. This agreement was amended in 2017. The percentage risk ceded decreased from 20% to 15%, effective January 1, 2018. The original agreement was approved by the Department on August 15, 2011 and was retroactive to January 1, 2011.

The Company also has a quota share reinsurance agreement with another affiliate of the Parent Company, Accendo Insurance Company, a Utah domiciled insurer. Under the terms of this agreement, the Company cedes 5% of the Company's share of the risk associated with individual and group premiums, claims and administrative expenses. This agreement was effective January 1, 2018.

The following is a financial summary of the ceded amounts and related expenses under these agreements:

# Notes to Financial Statement

## 23. Reinsurance (continued)

	<u>Month ending</u> <u>March 31, 2022</u>	<u>Year ending</u> <u>December 31, 2021</u>
<b>Statement of Revenue and Expense:</b>		
Premiums and other revenue	\$ 132,245,378	\$ 416,769,508
Benefits	(124,742,591)	(287,767,934)
Commission expenses	(20,148,315)	(81,904,867)
Interest expense	128,378	82,418
Total revenue and expense ceded	\$ (12,517,150)	\$ 47,179,125

### Balance Sheet:

Aggregate Health Policy Reserve	\$ 595,235	\$ 366,064
Accrued retrospective premiums	(34,237,033)	(6,487,947)
Premiums received in advance	13,446,783	6,488,846
Premiums receivable	(5,792,558)	(5,393,644)
Healthcare Receivable	(89,952,084)	(64,297,508)
Total ceded balance sheet Items	\$ (115,939,657)	\$ (69,324,189)

<b>Unsettled Prior Year Balance</b>	\$ 45,785,884	\$ (1,393,242)
Funds held by or deposited with reinsured companies	\$ 146,415,774	\$ 423,706,836
Funds held under reinsurance treaties with unauthorized reinsurers	(229,086,697)	(447,245,141)
Amount due from Accendo & CVS Caremark Indemnity, Ltd.	\$ (82,670,923)	\$ (23,538,305)

B. Uncollectible Reinsurance: None

C. Commutation of Ceded Reinsurance:

The Company did not commute any ceded reinsurance, nor did it enter into or engage in any agreement that reinsures policies or contracts that were in-force or had existing reserves as of the effective date of such agreements.

D. Certified Reinsurer Rating Downgraded or Status Subject to Revocation: None

E. Reinsurance Credit: None

## 24. Retrospectively Rated Contracts & Contracts Subject to Redetermination

A. The Company's Medicare Part D contract with CMS contains a risk corridor feature. Due to the risk corridor feature, the Company's business is accounted for as a retrospectively rated contract. The Company estimates retrospective premium adjustments using a mathematical approach based on the Company's underwriting experience. As of March 31, 2022 and December 31, 2021 accrued retroactive premium adjustments were reported as *aggregate health policy reserves* in the amount of \$27.2 million and \$32.2 million, respectively, and as *accrued retrospective premiums and contracts subject to redetermination* of \$136.9 million and \$20.9 million, respectively, for different plan years.

B. The Company records the risk corridor adjustment as an adjustment to earned premiums.

C. The amount of net direct premiums written by the Company during the first three months ending March 31, 2022 and 2021 that was subject to the retrospective rating feature was \$373.0 million and \$476.6 million, respectively, which represented 77.3%, and 90.4%, respectively, of the total premiums written, excluding risk corridor adjustment.

D. Medical loss ratio rebates required pursuant to the Public Health Service Act: There was no MLR recorded during the first three months ending March 31, 2022 and the year ending December 31, 2021.

E. Risk Sharing Provisions of the ACA: The Company only offers health insurance coverage under Medicare Part D and is not a qualified health plan under the definition of the ACA.

## Notes to Financial Statement

### 25. Change in Incurred Claims and Claim Adjustment Expenses

- A. The following table provides a reconciliation of the beginning and ending balances of claims unpaid, accruals for medical incentive pool and bonus, and health care receivables as follows:

	<b>Month Ending March 31, 2022</b>	<b>Year Ending December 31, 2021</b>
<b>Balances as of January 1:</b>		
Reserves for unpaid claims	\$ 24	\$ 22
Health Care Receivable	(257,190,032)	(557,821,249)
	\$ (257,190,008)	\$ (557,821,227)
<b>Incurred related to:</b>		
Current year	\$ 487,296,480	\$ 1,219,465,456
Prior year	41,131,363	21,398,358
	\$ 528,427,843	\$ 1,240,863,814
<b>Paid (received) related to:</b>		
Current year	\$ 845,359,142	\$ 1,476,655,464
Prior year	(214,313,139)	(536,422,869)
	\$ 631,046,003	\$ 940,232,595
<b>Balances as of March 31, 2022 and December 31, 2021:</b>		
Reserves for unpaid claims	\$ 164	\$ 24
Health Care Receivable	(359,808,332)	(257,190,032)
	\$ (359,808,168)	\$ (257,190,008)

Changes in prior year reserves are generally the results of ongoing analysis of recent loss development trends. Original estimates are increased or decreased, as additional information becomes known regarding claims. It is at least reasonably possible that a further change in reserves for prior years could occur within one year from the date of these financial statements and that such a change in these estimates could be material to the financial statements.

During the first quarter of 2022 and the year of 2021, the Company experienced \$41.1 million and \$21.4 million unfavorable prior year claims development, respectively, all of which was related to retrospectively rated policies. In 2022, the unfavorable development was primarily due to unfavorable prior year rebates development. In 2021 the unfavorable development was due to unfavorable performance network rebates related to prior year givebacks, unfavorable self-audit reserve adjustments, and unfavorable pharmacy audit development.

- B. There were no changes in methodologies and assumptions used in calculating the liability for unpaid losses and loss adjustment expense during the first quarter of 2022 and the year of 2021. Prescription drugs claims under Medicare Part D business are typically reported and adjudicated within a very short period of time. The Company considers the potential unreported claims for Medicare Part D business as negligible, and no reserves are deemed as necessary.

### 26. Intercompany Pooling Arrangements

None

### 27. Structured Settlements

None

### 28. Health Care Receivables

The following is a summary of the Company's *Health Care and Other Amounts Receivable* as of March 31, 2022 and December 31, 2021, respectively. The amounts are presented gross of non-admitted receivable, but net of reinsurance ceded:

	<b>3/31/2022</b>	<b>12/31/2021</b>
Pharmaceutical Rebates Receivable	\$ 35,090,078	1,409,627
Performance Network Rebate Receivable	324,718,254	255,780,405
<b>Total Health Care and Other Amounts Receivable</b>	<b>\$ 359,808,332</b>	<b>\$ 257,190,032</b>

# Notes to Financial Statement

## 28. Health Care Receivables (continued)

### A. Pharmaceutical Rebates Receivables:

The Company has contracted with Part D Services for pharmaceutical rebates. Amounts recorded in the Company's financial statements are determined based on the amounts the Part D Services has collected or expects to collect as invoiced or otherwise confirmed by Part D Services.

The Company reported a pharmaceutical rebate receivable of \$35.1 million and \$1.4 million, net of reinsurance ceded, as of March 31, 2022 and December 31, 2021, respectively. All rebates are determined to be received within 90 days after Part D Services receives the payments from manufactures. The pharmaceutical rebates receivables reported below are gross of reinsurance ceded.

Quarter	Estimated Pharmacy Rebates Pertaining to Current Quarter Scripts Filled and as Reported on Financial Statements	Pharmacy Rebates as Billed or Otherwise Confirmed	Actual Rebates Received Within 90 Days of Billing	Actual Rebates Received Within 91 to 180 Days of Billing	Actual Rebates Received More Than 180 Days After Billing
03/31/2021	\$ 1,959,651,194	\$ 1,959,651,194	\$ 1,915,788,596	\$ -	\$ -
12/31/2021	1,918,386,633	1,919,370,152	1,919,370,152	-	-
9/30/2021	1,928,833,659	1,913,905,713	1,913,905,713	-	-
6/30/2021	1,915,535,929	1,901,805,285	1,901,805,285	-	-
3/31/2021	1,813,826,830	1,873,323,664	1,873,323,664	-	-
12/31/2020	1,918,110,145	1,906,106,538	1,906,106,538	-	-
9/30/2020	1,898,800,635	1,895,582,755	1,895,582,755	-	-
6/30/2020	1,878,658,855	1,878,301,924	1,878,301,924	-	-
3/31/2020	1,879,954,111	1,913,492,998	1,913,492,998	-	-
12/31/2019	1,994,126,804	1,970,344,126	1,970,344,126	-	-
9/30/2019	2,028,740,752	2,014,808,370	2,014,808,370	-	-
6/30/2019	2,045,546,398	2,030,165,331	2,030,165,331	-	-

### B. Risk Sharing Receivables:

None

### Other Healthcare Receivables:

CVS Part D Services, the Company's pharmacy benefit manager, has a pharmacy network that includes a retrospective performance network rebate (PNR) program. The PNR is performance based upon whether the participating pharmacies have met certain pre-established criteria in the contract. The PNR agreements for both 2022 and 2021 have three performance measurement periods (measurement period), ending April 30, August 31, and December 31, respectively. The Company also contracted with AHM for a pharmacy network rebate program focusing on generic drugs. The rebate reflects the difference between the contracted generic effective rate discount of average wholesale price (AVP) and the actual AWP discount at point of sale. Most of these rebates are collected monthly on a one-month lag via an automated process administrated by Part D Services. Final settlements with pharmacies will be completed within twelve months after year end. The receivables related to with these programs fit the category of Other Health Care Receivables per SSAP No. 84 *Health Care and Government Insured Plan Receivables*.

## 29. Participating Policies

None

## 30. Premium Deficiency Reserves

None

## 31. Anticipated Salvage and Subrogation

None

# GENERAL INTERROGATORIES

## PART 1 - COMMON INTERROGATORIES

### GENERAL

- 1.1 Did the reporting entity experience any material transactions requiring the filing of Disclosure of Material Transactions with the State of Domicile, as required by the Model Act? ..... Yes [ ] No [ X ]
- 1.2 If yes, has the report been filed with the domiciliary state? ..... Yes [ ] No [ ]
- 2.1 Has any change been made during the year of this statement in the charter, by-laws, articles of incorporation, or deed of settlement of the reporting entity? ..... Yes [ ] No [ X ]
- 2.2 If yes, date of change: .....
- 3.1 Is the reporting entity a member of an Insurance Holding Company System consisting of two or more affiliated persons, one or more of which is an insurer? ..... Yes [ X ] No [ ]  
If yes, complete Schedule Y, Parts 1 and 1A.
- 3.2 Have there been any substantial changes in the organizational chart since the prior quarter end? ..... Yes [ ] No [ X ]
- 3.3 If the response to 3.2 is yes, provide a brief description of those changes.
- 3.4 Is the reporting entity publicly traded or a member of a publicly traded group? ..... Yes [ X ] No [ ]
- 3.5 If the response to 3.4 is yes, provide the CIK (Central Index Key) code issued by the SEC for the entity/group. .... 0000064803
- 4.1 Has the reporting entity been a party to a merger or consolidation during the period covered by this statement? ..... Yes [ ] No [ X ]
- 4.2 If yes, provide the name of the entity, NAIC Company Code, and state of domicile (use two letter state abbreviation) for any entity that has ceased to exist as a result of the merger or consolidation.

1	2	3
Name of Entity	NAIC Company Code	State of Domicile

5. If the reporting entity is subject to a management agreement, including third-party administrator(s), managing general agent(s), attorney-in-fact, or similar agreement, have there been any significant changes regarding the terms of the agreement or principals involved? ..... Yes [ ] No [ X ] N/A [ ]  
If yes, attach an explanation.
- 6.1 State as of what date the latest financial examination of the reporting entity was made or is being made. .... 12/31/2020
- 6.2 State the as of date that the latest financial examination report became available from either the state of domicile or the reporting entity. This date should be the date of the examined balance sheet and not the date the report was completed or released. .... 12/31/2018
- 6.3 State as of what date the latest financial examination report became available to other states or the public from either the state of domicile or the reporting entity. This is the release date or completion date of the examination report and not the date of the examination (balance sheet date). .... 06/29/2020
- 6.4 By what department or departments?  
Tennessee, Department of Commerce and Insurance
- 6.5 Have all financial statement adjustments within the latest financial examination report been accounted for in a subsequent financial statement filed with Departments? ..... Yes [ ] No [ ] N/A [ X ]
- 6.6 Have all of the recommendations within the latest financial examination report been complied with? ..... Yes [ X ] No [ ] N/A [ ]
- 7.1 Has this reporting entity had any Certificates of Authority, licenses or registrations (including corporate registration, if applicable) suspended or revoked by any governmental entity during the reporting period? ..... Yes [ ] No [ X ]
- 7.2 If yes, give full information:
- 8.1 Is the company a subsidiary of a bank holding company regulated by the Federal Reserve Board? ..... Yes [ ] No [ X ]
- 8.2 If response to 8.1 is yes, please identify the name of the bank holding company.
- 8.3 Is the company affiliated with one or more banks, thrifts or securities firms? ..... Yes [ ] No [ X ]
- 8.4 If response to 8.3 is yes, please provide below the names and location (city and state of the main office) of any affiliates regulated by a federal regulatory services agency [i.e. the Federal Reserve Board (FRB), the Office of the Comptroller of the Currency (OCC), the Federal Deposit Insurance Corporation (FDIC) and the Securities Exchange Commission (SEC)] and identify the affiliate's primary federal regulator.

1	2	3	4	5	6
Affiliate Name	Location (City, State)	FRB	OCC	FDIC	SEC

## GENERAL INTERROGATORIES

- 9.1 Are the senior officers (principal executive officer, principal financial officer, principal accounting officer or controller, or persons performing similar functions) of the reporting entity subject to a code of ethics, which includes the following standards? ..... Yes  No
- (a) Honest and ethical conduct, including the ethical handling of actual or apparent conflicts of interest between personal and professional relationships;
- (b) Full, fair, accurate, timely and understandable disclosure in the periodic reports required to be filed by the reporting entity;
- (c) Compliance with applicable governmental laws, rules and regulations;
- (d) The prompt internal reporting of violations to an appropriate person or persons identified in the code; and
- (e) Accountability for adherence to the code.
- 9.11 If the response to 9.1 is No, please explain:
- 9.2 Has the code of ethics for senior managers been amended? ..... Yes  No
- 9.21 If the response to 9.2 is Yes, provide information related to amendment(s).  
Revised definition of PII to be included before PHI
- 9.3 Have any provisions of the code of ethics been waived for any of the specified officers? ..... Yes  No
- 9.31 If the response to 9.3 is Yes, provide the nature of any waiver(s).

### FINANCIAL

- 10.1 Does the reporting entity report any amounts due from parent, subsidiaries or affiliates on Page 2 of this statement? ..... Yes  No
- 10.2 If yes, indicate any amounts receivable from parent included in the Page 2 amount: ..... \$ .....0

### INVESTMENT

- 11.1 Were any of the stocks, bonds, or other assets of the reporting entity loaned, placed under option agreement, or otherwise made available for use by another person? (Exclude securities under securities lending agreements.) ..... Yes  No
- 11.2 If yes, give full and complete information relating thereto:
12. Amount of real estate and mortgages held in other invested assets in Schedule BA: ..... \$ .....0
13. Amount of real estate and mortgages held in short-term investments: ..... \$ .....0
- 14.1 Does the reporting entity have any investments in parent, subsidiaries and affiliates? ..... Yes  No
- 14.2 If yes, please complete the following:
- |   | 1<br>Prior Year-End<br>Book/Adjusted<br>Carrying Value | 2<br>Current Quarter<br>Book/Adjusted<br>Carrying Value |
|---|--|---|
| 14.21 Bonds .....   | \$ .....0  | \$ .....0   |
| 14.22 Preferred Stock .....   | \$ .....0  | \$ .....0   |
| 14.23 Common Stock .....  | \$ .....0  | \$ .....0   |
| 14.24 Short-Term Investments .....  | \$ .....0  | \$ .....0   |
| 14.25 Mortgage Loans on Real Estate .....   | \$ .....0  | \$ .....0   |
| 14.26 All Other .....   | \$ .....0  | \$ .....0   |
| 14.27 Total Investment in Parent, Subsidiaries and Affiliates (Subtotal Lines 14.21 to 14.26) ..... | \$ .....0  | \$ .....0   |
| 14.28 Total Investment in Parent included in Lines 14.21 to 14.26 above .....                       | \$ .....0  | \$ .....0   |
- 15.1 Has the reporting entity entered into any hedging transactions reported on Schedule DB? ..... Yes  No
- 15.2 If yes, has a comprehensive description of the hedging program been made available to the domiciliary state? ..... Yes  No  N/A
- If no, attach a description with this statement.
16. For the reporting entity's security lending program, state the amount of the following as of the current statement date:
- 16.1 Total fair value of reinvested collateral assets reported on Schedule DL, Parts 1 and 2. .... \$ .....0
- 16.2 Total book adjusted/carrying value of reinvested collateral assets reported on Schedule DL, Parts 1 and 2 ..... \$ .....0
- 16.3 Total payable for securities lending reported on the liability page. .... \$ .....0

STATEMENT AS OF MARCH 31, 2022 OF THE SilverScript Insurance Company

**GENERAL INTERROGATORIES**

17. Excluding items in Schedule E - Part 3 - Special Deposits, real estate, mortgage loans and investments held physically in the reporting entity's offices, vaults or safety deposit boxes, were all stocks, bonds and other securities, owned throughout the current year held pursuant to a custodial agreement with a qualified bank or trust company in accordance with Section 1, III - General Examination Considerations, F. Outsourcing of Critical Functions, Custodial or Safekeeping Agreements of the NAIC Financial Condition Examiners Handbook? ..... Yes [ X ] No [ ]
- 17.1 For all agreements that comply with the requirements of the NAIC Financial Condition Examiners Handbook, complete the following:

1 Name of Custodian(s)	2 Custodian Address
Bank of America, N.A. ....	2000 Clayton Rd. 5th floor, Concord, CA 94520 .....
Bank of America, N.A. ....	200 N College Street, Charlotte, NC 28255 .....
Regions Bank .....	400 West Capitol, Little Rock, AR 72201 .....
Wells Fargo .....	1021 E. Cary Steet, Richmond, VA 23219 .....
US Bank .....	225 Water Street, Ste. 700, Jacksonville, FL 32202 .....
State Street Bank and Trust Company .....	State Street Financial Center, One Lincoln Street, Boston, MA 02111-2900 .....
.....	.....

- 17.2 For all agreements that do not comply with the requirements of the NAIC Financial Condition Examiners Handbook, provide the name, location and a complete explanation:

1 Name(s)	2 Location(s)	3 Complete Explanation(s)
.....	.....	.....

- 17.3 Have there been any changes, including name changes, in the custodian(s) identified in 17.1 during the current quarter? ..... Yes [ ] No [ X ]
- 17.4 If yes, give full information relating thereto:

1 Old Custodian	2 New Custodian	3 Date of Change	4 Reason
.....	.....	.....	.....

- 17.5 Investment management – Identify all investment advisors, investment managers, broker/dealers, including individuals that have the authority to make investment decisions on behalf of the reporting entity. For assets that are managed internally by employees of the reporting entity, note as such. ["...that have access to the investment accounts"; "...handle securities"]

1 Name of Firm or Individual	2 Affiliation
David S. Blunt .....	A.....
.....	.....

- 17.5097 For those firms/individuals listed in the table for Question 17.5, do any firms/individuals unaffiliated with the reporting entity (i.e. designated with a "U") manage more than 10% of the reporting entity's invested assets? ..... Yes [ ] No [ X ]
- 17.5098 For firms/individuals unaffiliated with the reporting entity (i.e. designated with a "U") listed in the table for Question 17.5, does the total assets under management aggregate to more than 50% of the reporting entity's invested assets? ..... Yes [ ] No [ X ]

- 17.6 For those firms or individuals listed in the table for 17.5 with an affiliation code of "A" (affiliated) or "U" (unaffiliated), provide the information for the table below.

1 Central Registration Depository Number	2 Name of Firm or Individual	3 Legal Entity Identifier (LEI)	4 Registered With	5 Investment Management Agreement (IMA) Filed
.....	David S. Blunt .....	.....	Not registered .....	.....

- 18.1 Have all the filing requirements of the Purposes and Procedures Manual of the NAIC Investment Analysis Office been followed? ..... Yes [ X ] No [ ]
- 18.2 If no, list exceptions:

19. By self-designating 5GI securities, the reporting entity is certifying the following elements for each self-designated 5GI security:
- a. Documentation necessary to permit a full credit analysis of the security does not exist or an NAIC CRP credit rating for an FE or PL security is not available.
  - b. Issuer or obligor is current on all contracted interest and principal payments.
  - c. The insurer has an actual expectation of ultimate payment of all contracted interest and principal.
- Has the reporting entity self-designated 5GI securities? ..... Yes [ ] No [ X ]

20. By self-designating PLGI securities, the reporting entity is certifying the following elements of each self-designated PLGI security:
- a. The security was purchased prior to January 1, 2018.
  - b. The reporting entity is holding capital commensurate with the NAIC Designation reported for the security.
  - c. The NAIC Designation was derived from the credit rating assigned by an NAIC CRP in its legal capacity as a NRSRO which is shown on a current private letter rating held by the insurer and available for examination by state insurance regulators.
  - d. The reporting entity is not permitted to share this credit rating of the PL security with the SVO.
- Has the reporting entity self-designated PLGI securities? ..... Yes [ ] No [ X ]

21. By assigning FE to a Schedule BA non-registered private fund, the reporting entity is certifying the following elements of each self-designated FE fund:
- a. The shares were purchased prior to January 1, 2019.
  - b. The reporting entity is holding capital commensurate with the NAIC Designation reported for the security.
  - c. The security had a public credit rating(s) with annual surveillance assigned by an NAIC CRP in its legal capacity as an NRSRO prior to January 1, 2019.
  - d. The fund only or predominantly holds bonds in its portfolio.
  - e. The current reported NAIC Designation was derived from the public credit rating(s) with annual surveillance assigned by an NAIC CRP in its legal capacity as an NRSRO.
  - f. The public credit rating(s) with annual surveillance assigned by an NAIC CRP has not lapsed.
- Has the reporting entity assigned FE to Schedule BA non-registered private funds that complied with the above criteria? ..... Yes [ ] No [ X ]

# GENERAL INTERROGATORIES

## PART 2 - HEALTH

1. Operating Percentages:
- 1.1 A&H loss percent .....101.4 %
  - 1.2 A&H cost containment percent .....0.5 %
  - 1.3 A&H expense percent excluding cost containment expenses .....14.4 %
- 2.1 Do you act as a custodian for health savings accounts? ..... Yes [ ] No [ X ]
- 2.2 If yes, please provide the amount of custodial funds held as of the reporting date .....\$ .....
- 2.3 Do you act as an administrator for health savings accounts? ..... Yes [ ] No [ X ]
- 2.4 If yes, please provide the balance of the funds administered as of the reporting date .....\$ .....
3. Is the reporting entity licensed or chartered, registered, qualified, eligible or writing business in at least two states? ..... Yes [ X ] No [ ]
- 3.1 If no, does the reporting entity assume reinsurance business that covers risks residing in at least one state other than the state of domicile of the reporting entity? ..... Yes [ ] No [ ]

**SCHEDULE S - CEDED REINSURANCE**

Showing All New Reinsurance Treaties - Current Year to Date

1 NAIC Company Code	2 ID Number	3 Effective Date	4 Name of Reinsurer	5 Domiciliary Jurisdiction	6 Type of Reinsurance Ceded	7 Type of Business Ceded	8 Type of Reinsurer	9 Certified Reinsurer Rating (1 through 6)	10 Effective Date of Certified Reinsurer Rating
<b>NONE</b>									

**SCHEDULE T - PREMIUMS AND OTHER CONSIDERATIONS**

Current Year to Date - Allocated by States and Territories

States, etc.	1 Active Status (a)	Direct Business Only								
		2 Accident and Health Premiums	3 Medicare Title XVIII	4 Medicaid Title XIX	5 CHIP Title XXI	6 Federal Employees Health Benefits Program Premiums	7 Life and Annuity Premiums & Other Considerations	8 Property/Casualty Premiums	9 Total Columns 2 Through 8	10 Deposit-Type Contracts
1. Alabama AL	L	3,824,040							3,824,040	
2. Alaska AK	L	235,244							235,244	
3. Arizona AZ	L	7,236,985							7,236,985	
4. Arkansas AR	L	6,345,170							6,345,170	
5. California CA	L	54,115,904							54,115,904	
6. Colorado CO	L	4,193,649							4,193,649	
7. Connecticut CT	L	5,678,032							5,678,032	
8. Delaware DE	L	1,997,439							1,997,439	
9. District of Columbia DC	L	1,798,564							1,798,564	
10. Florida FL	L	81,689,233							81,689,233	
11. Georgia GA	L	14,895,413							14,895,413	
12. Hawaii HI	L	546,492							546,492	
13. Idaho ID	L	1,931,983							1,931,983	
14. Illinois IL	L	14,921,328							14,921,328	
15. Indiana IN	L	8,831,857							8,831,857	
16. Iowa IA	L	6,236,907							6,236,907	
17. Kansas KS	L	5,835,722							5,835,722	
18. Kentucky KY	L	6,796,599							6,796,599	
19. Louisiana LA	L	8,072,537							8,072,537	
20. Maine ME	L	995,557							995,557	
21. Maryland MD	L	9,989,334							9,989,334	
22. Massachusetts MA	L	20,424,806							20,424,806	
23. Michigan MI	L	7,013,976							7,013,976	
24. Minnesota MN	L	8,169,332							8,169,332	
25. Mississippi MS	L	6,615,998							6,615,998	
26. Missouri MO	L	10,812,564							10,812,564	
27. Montana MT	L	2,349,151							2,349,151	
28. Nebraska NE	L	3,256,811							3,256,811	
29. Nevada NV	L	1,107,336							1,107,336	
30. New Hampshire NH	L	2,414,649							2,414,649	
31. New Jersey NJ	L	13,390,476							13,390,476	
32. New Mexico NM	L	2,622,660							2,622,660	
33. New York NY	L	46,793,718							46,793,718	
34. North Carolina NC	L	15,546,522							15,546,522	
35. North Dakota ND	L	2,162,685							2,162,685	
36. Ohio OH	L	11,626,784							11,626,784	
37. Oklahoma OK	L	12,238,362							12,238,362	
38. Oregon OR	L	3,562,543							3,562,543	
39. Pennsylvania PA	L	16,897,137							16,897,137	
40. Rhode Island RI	L	1,120,977							1,120,977	
41. South Carolina SC	L	7,499,971							7,499,971	
42. South Dakota SD	L	2,180,597							2,180,597	
43. Tennessee TN	L	8,798,830							8,798,830	
44. Texas TX	L	21,789,877							21,789,877	
45. Utah UT	L	1,383,216							1,383,216	
46. Vermont VT	L	1,494,705							1,494,705	
47. Virginia VA	L	10,386,017							10,386,017	
48. Washington WA	L	7,900,262							7,900,262	
49. West Virginia WV	L	2,685,014							2,685,014	
50. Wisconsin WI	L	7,135,901							7,135,901	
51. Wyoming WY	L	1,430,349							1,430,349	
52. American Samoa AS	N								0	
53. Guam GU	L	1,995							1,995	
54. Puerto Rico PR	L	31,060							31,060	
55. U.S. Virgin Islands VI	L	8,661							8,661	
56. Northern Mariana Islands MP	L	991							991	
57. Canada CAN	N								0	
58. Aggregate Other Aliens OT	XXX	0	0	0	0	0	0	0	0	0
59. Subtotal	XXX	507,021,922	0	0	0	0	0	0	507,021,922	0
60. Reporting Entity Contributions for Employee Benefit Plans	XXX								0	
61. Totals (Direct Business)	XXX	507,021,922	0	0	0	0	0	0	507,021,922	0
DETAILS OF WRITE-INS										
58001.	XXX									
58002.	XXX									
58003.	XXX									
58998. Summary of remaining write-ins for Line 58 from overflow page	XXX	0	0	0	0	0	0	0	0	0
58999. Totals (Lines 58001 through 58003 plus 58998)(Line 58 above)	XXX	0	0	0	0	0	0	0	0	0

(a) Active Status Counts:

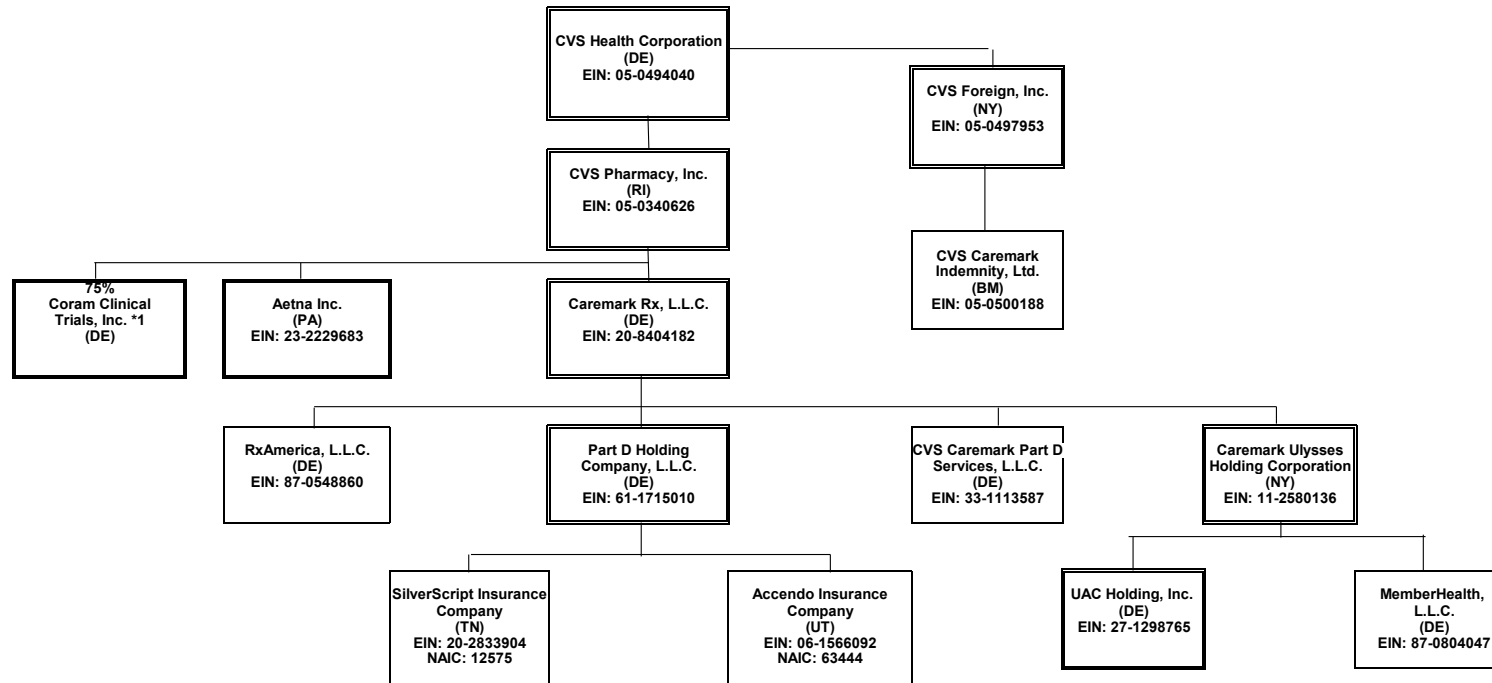
L - Licensed or Chartered - Licensed Insurance carrier or domiciled RRG.....55 R - Registered - Non-domiciled RRGs.....0  
 E - Eligible - Reporting entities eligible or approved to write surplus lines in the state.....0 Q - Qualified - Qualified or accredited reinsurer.....0  
 N - None of the above - Not allowed to write business in the state.....2

The basis of the allocation by state is the residency of the member.

STATEMENT AS OF MARCH 31, 2022 OF THE SilverScript Insurance Company

SCHEDULE Y - INFORMATION CONCERNING ACTIVITIES OF INSURANCE MEMBERS OF A HOLDING COMPANY GROUP

PART 1 - ORGANIZATIONAL CHART



This organizational chart reflects the insurance entity reporting system and identifies the relationship between the ultimate parent and all member insurers. The ultimate controlling company is a Fortune 7 company with numerous subsidiaries, the majority of which do not interact with the insurance entities.

(1) Insurers/HMO's

Percentages are rounded to the nearest whole percent and based on ownership of voting rights.

Double borders indicate entity has subsidiaries shown on the same page.

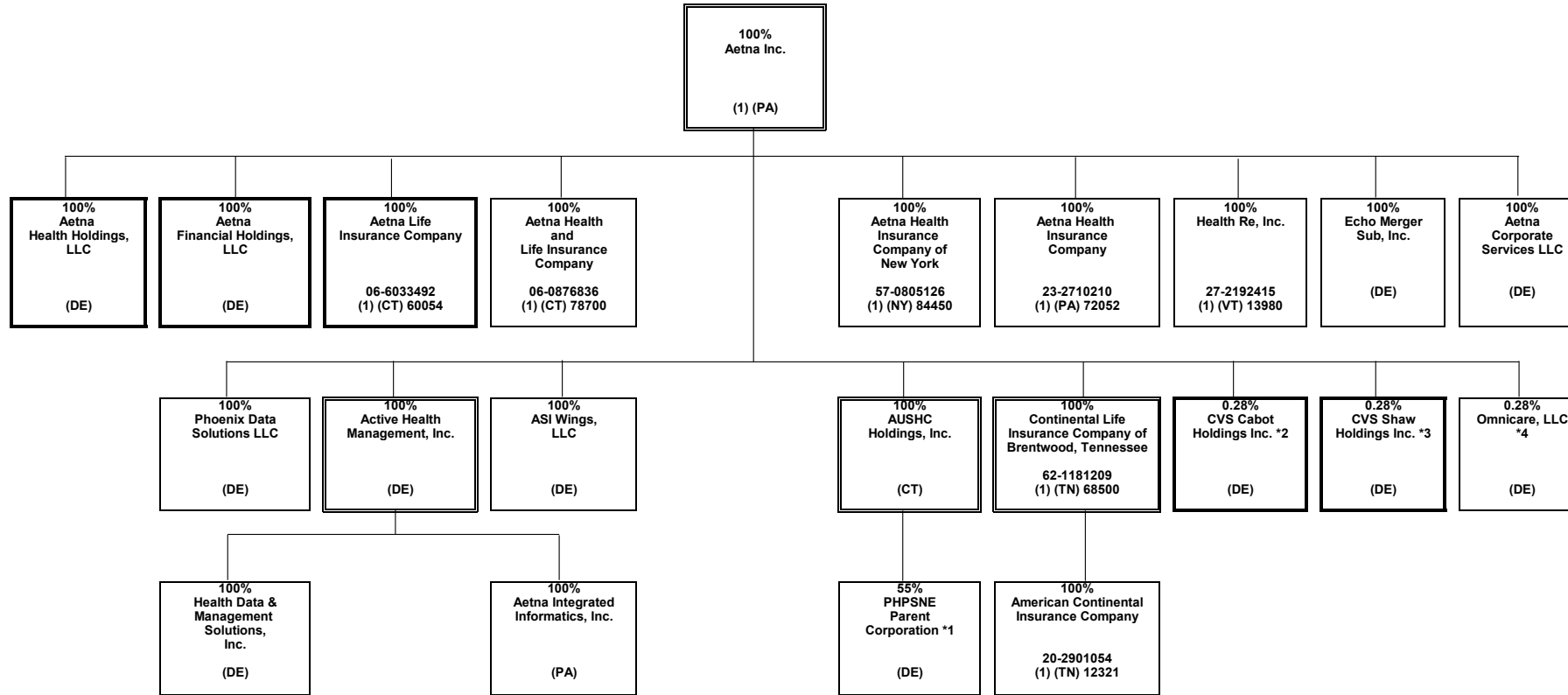
Bold borders indicate entity has subsidiaries shown on a separate page.

\*1 Coram Clinical Trials, Inc. is also 25% owned by Aetna Life Insurance Company

STATEMENT AS OF MARCH 31, 2022 OF THE SilverScript Insurance Company

SCHEDULE Y - INFORMATION CONCERNING ACTIVITIES OF INSURANCE MEMBERS OF A HOLDING COMPANY GROUP

PART 1 - ORGANIZATIONAL CHART

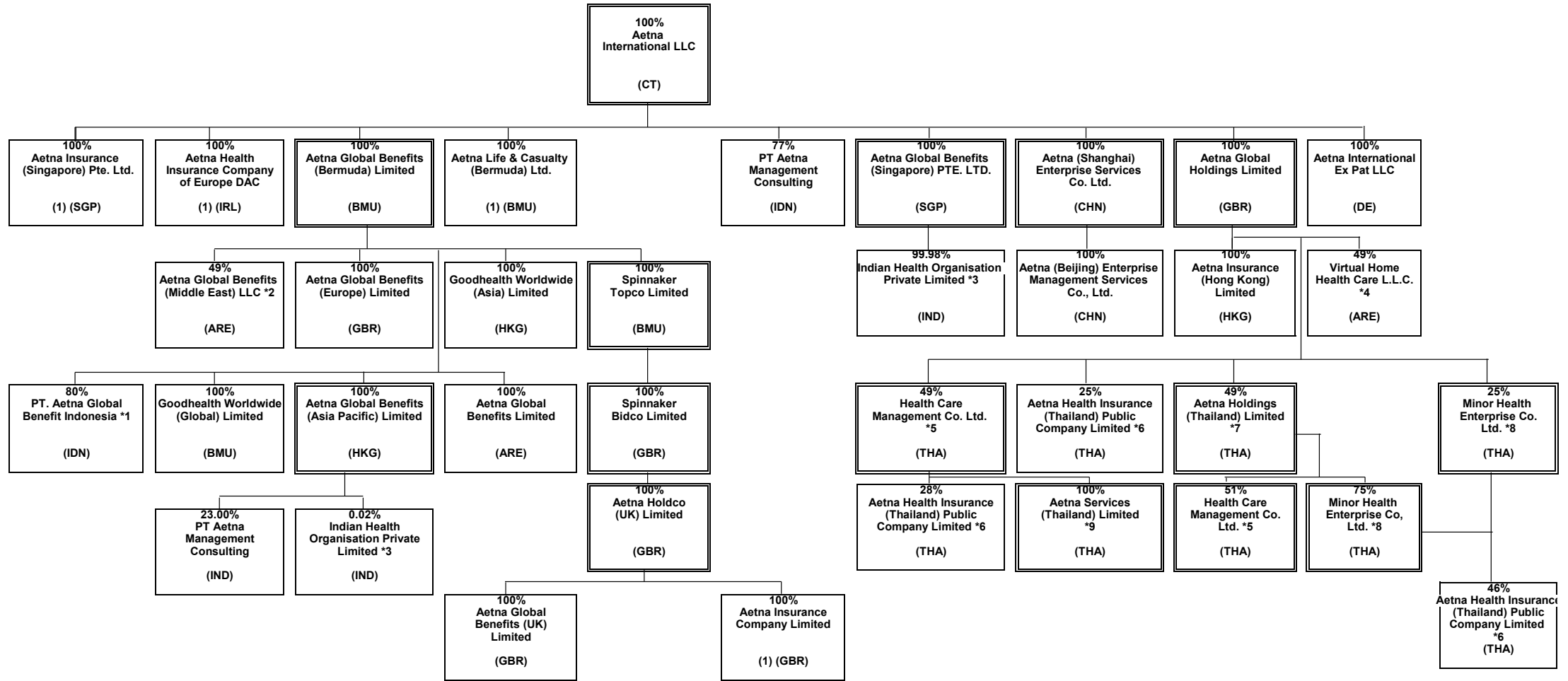


\*1 PHSNE Parent Corporation is also 45% owned by third parties.  
 \*2 CVS Cabot Holdings Inc. is also 99.72% owned by Coram Clinical Trials, Inc.  
 \*3 CVS Shaw Holdings Inc. is also 99.72% owned by Coram Clinical Trials, Inc.  
 \*4 Omnicare, LLC is also owned by CVS Cabot Holdings Inc and CVS Shaw Holdings Inc., each with 49.86% ownership.

STATEMENT AS OF MARCH 31, 2022 OF THE SilverScript Insurance Company

SCHEDULE Y - INFORMATION CONCERNING ACTIVITIES OF INSURANCE MEMBERS OF A HOLDING COMPANY GROUP

PART 1 - ORGANIZATIONAL CHART



\*1 PT. Aetna Global Benefits Indonesia is also 20% owned by Suhatsyah Rivai, Aetna's Nominee.

\*2 Aetna Global Benefits (Middle East) LLC is also 51% is owned by Euro Gulf LLC, Aetna's Nominee.

\*3 Indian Health Organisation Private Limited is 0.019857% owned by Aetna Global Benefits (Asia Pacific) and 99.980143% owned by Aetna Global Benefits (Singapore) PTE. LTD.

\*4 Virtual Home Health Care L.L.C. is also 51% owned by CBD Commercial Brokers LLC, Aetna's Nominee

\*5 Health Care Management Co. Ltd. is also owned by Aetna Global Benefits (Bermuda) Limited (1 share).

\*6 Aetna Health Insurance (Thailand) Public Company Limited is also owned by Aetna Global Benefits (Bermuda) Limited (1 share), Aetna Health Holdings (Thailand) Limited (1 share), Aetna Services (Thailand) Limited (1 share), Ms. Saifon Khongjitngam (1 share), and Mr. Buncha Tanphragorn (1 share)

\*7 Aetna Holdings (Thailand) Limited is also 51% owned by Mr. Paiboon Sutantivorakoon plus Aetna Benefits (Bermuda) Limited owns 1 share.

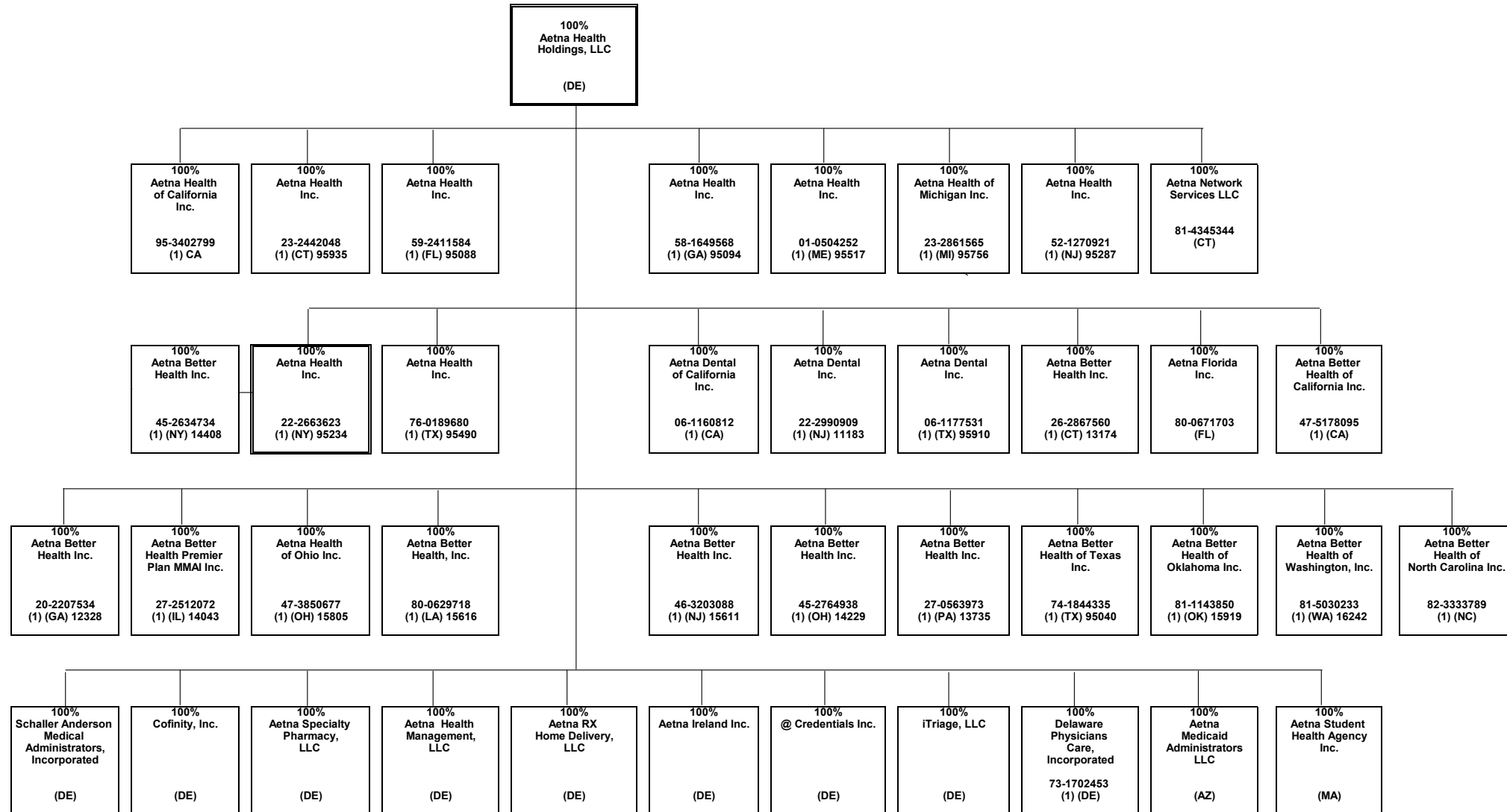
\*8 Minor Health Enterprise Co, Ltd is also (1 share) owned by Aetna Global Benefits (Bermuda) Limited

\*9 Aetna Services (Thailand) Limited is also (1 share) owned by Aetna Global Benefits (Bermuda) Limited and (1 share) owned by Aetna Global Holdings Limited

STATEMENT AS OF MARCH 31, 2022 OF THE SilverScript Insurance Company

SCHEDULE Y - INFORMATION CONCERNING ACTIVITIES OF INSURANCE MEMBERS OF A HOLDING COMPANY GROUP

PART 1 - ORGANIZATIONAL CHART

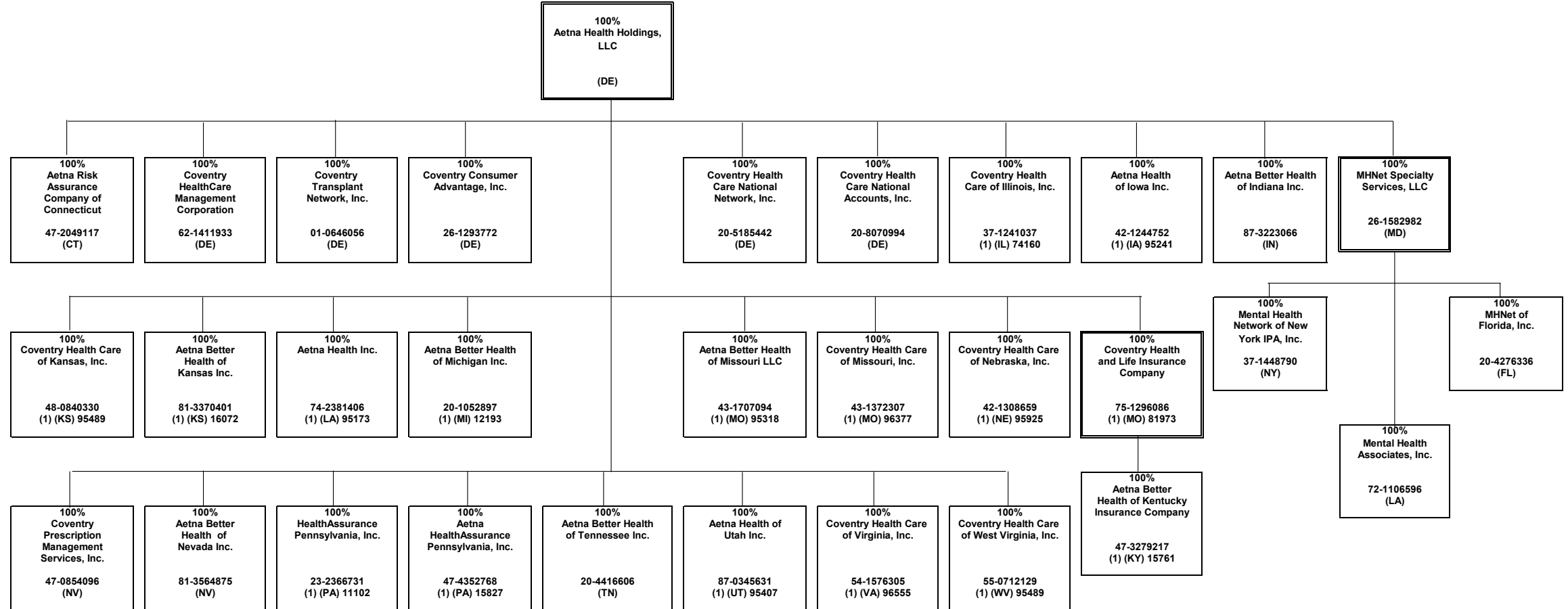


15.3

STATEMENT AS OF MARCH 31, 2022 OF THE SilverScript Insurance Company

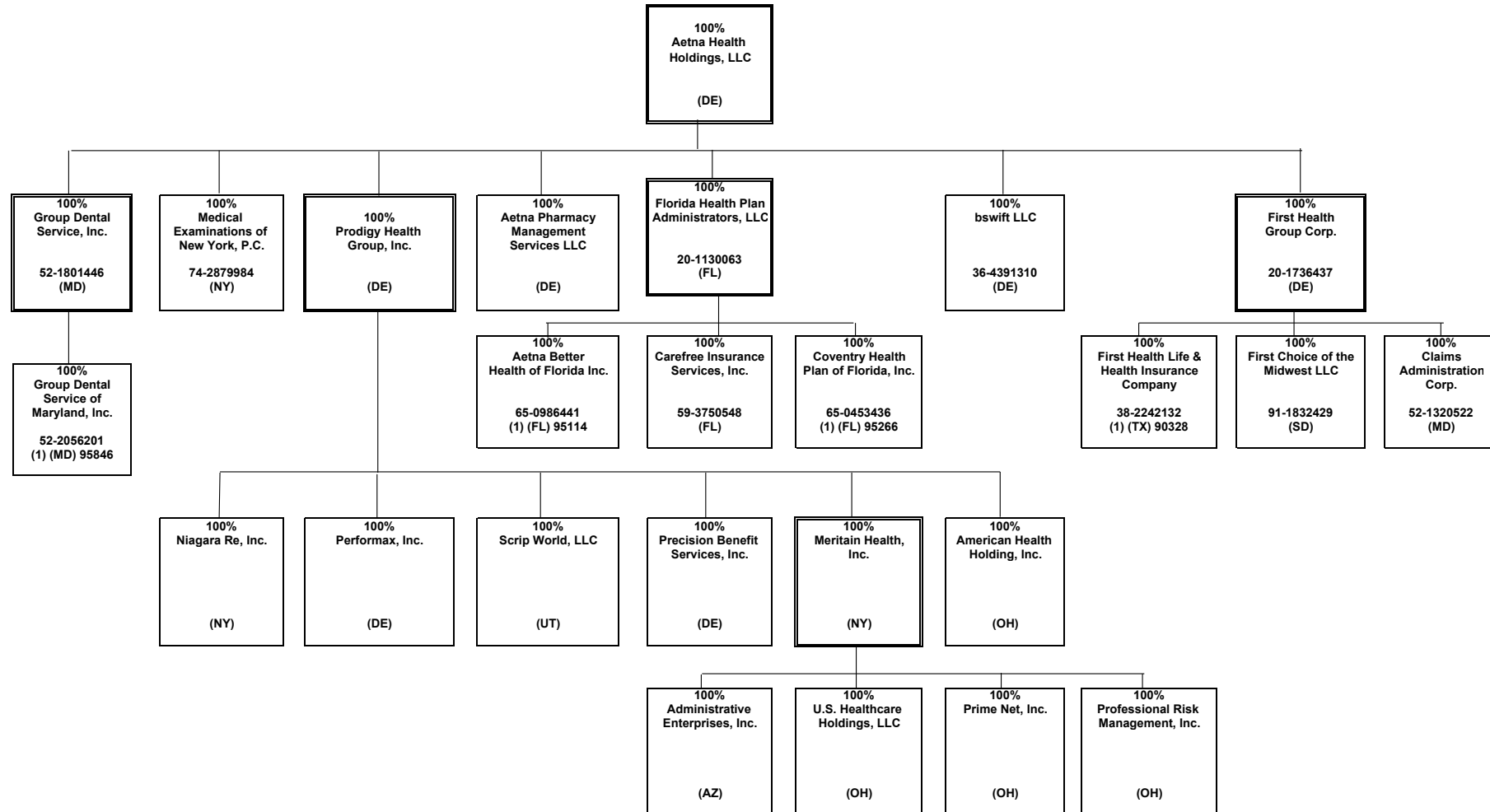
SCHEDULE Y - INFORMATION CONCERNING ACTIVITIES OF INSURANCE MEMBERS OF A HOLDING COMPANY GROUP

PART 1 - ORGANIZATIONAL CHART



15.4

STATEMENT AS OF MARCH 31, 2022 OF THE SilverScript Insurance Company  
**SCHEDULE Y - INFORMATION CONCERNING ACTIVITIES OF INSURANCE MEMBERS OF A HOLDING COMPANY GROUP**  
**PART 1 - ORGANIZATIONAL CHART**

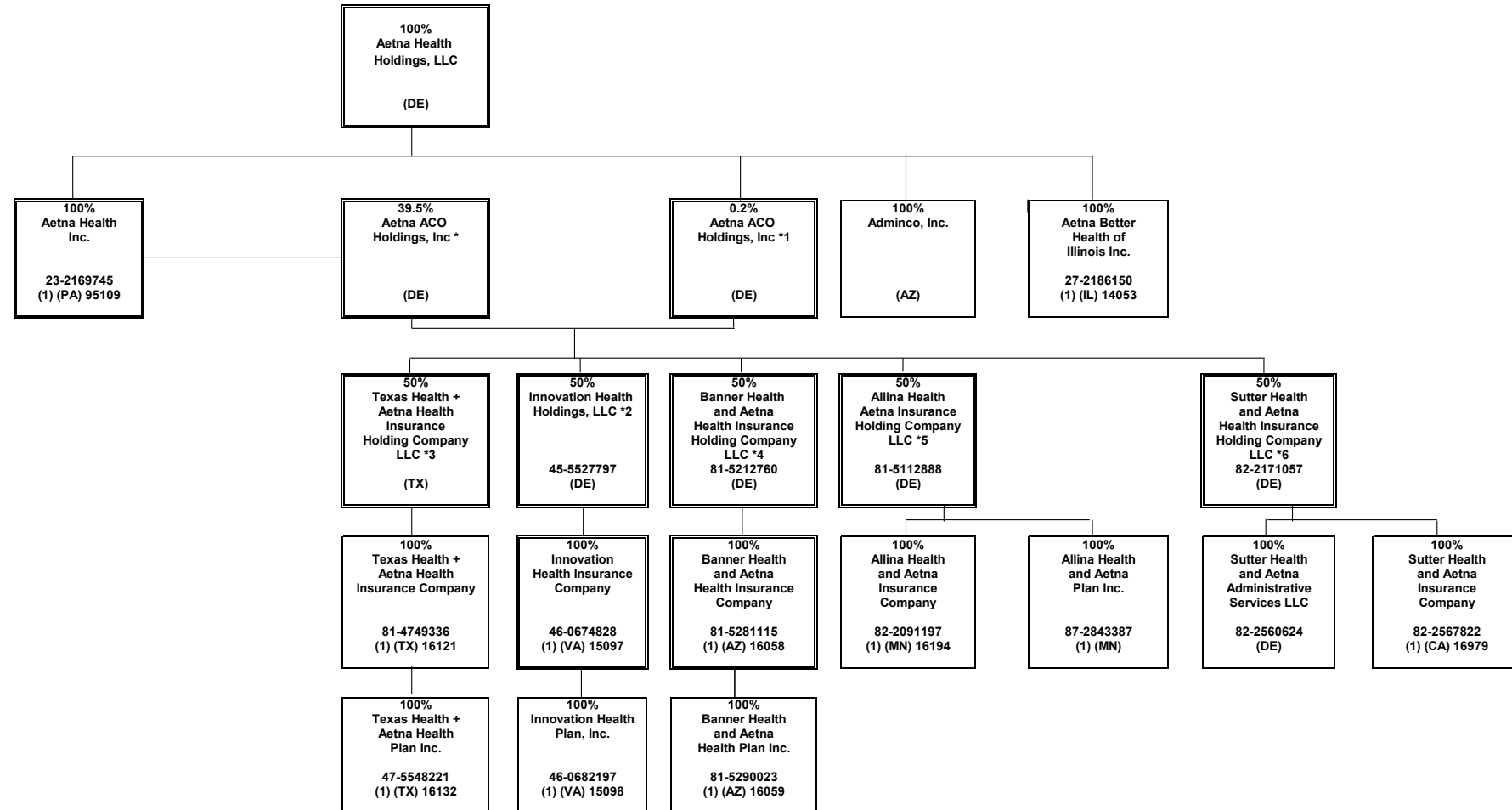


15.5

STATEMENT AS OF MARCH 31, 2022 OF THE SilverScript Insurance Company

SCHEDULE Y - INFORMATION CONCERNING ACTIVITIES OF INSURANCE MEMBERS OF A HOLDING COMPANY GROUP

PART 1 - ORGANIZATIONAL CHART



15.6

\*1 Aetna ACO Holdings Inc. is owned by Aetna Life Insurance Company (302 shares); Aetna Health Inc. (PA) (198 shares); and Aetna Health Holdings, LLC (1 share).

\*2 Innovation Health Holdings, LLC is also 50% owned by Inova Health System Foundation.

\*3 Texas Health + Aetna Health Insurance Holding Company LLC is also 50% owned by Texas Health Resources.

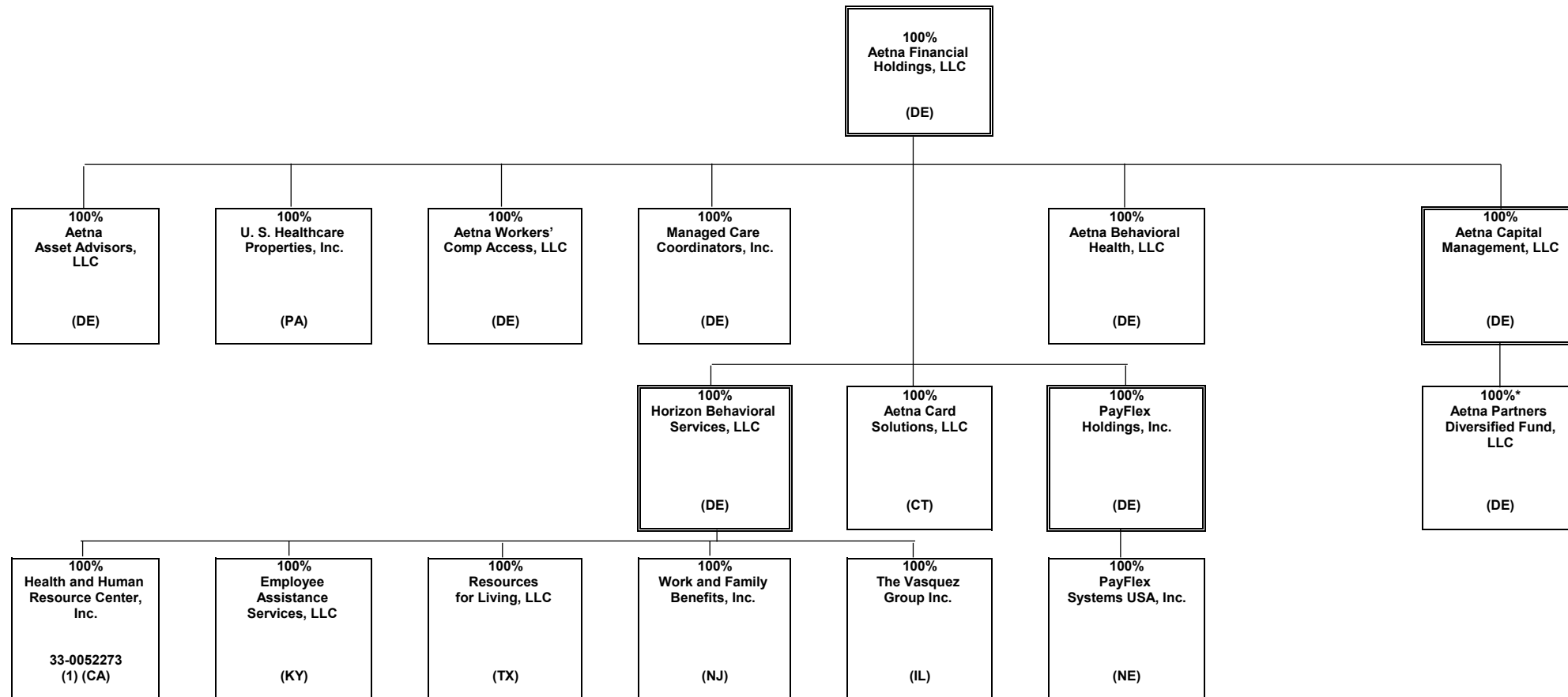
\*4 Banner Health and Aetna Health Insurance Holding Company LLC is also 50% owned by Banner Health.

\*5 Allina Health and Aetna Insurance Holding Company LLC is also 50% owned by Allina Health.

\*6 Sutter Health and Aetna Insurance Holding Company LLC is also 50% owned by Sutter Health Plan Products Organization, LLC.

**SCHEDULE Y - INFORMATION CONCERNING ACTIVITIES OF INSURANCE MEMBERS OF A HOLDING COMPANY GROUP**

**PART 1 - ORGANIZATIONAL CHART**

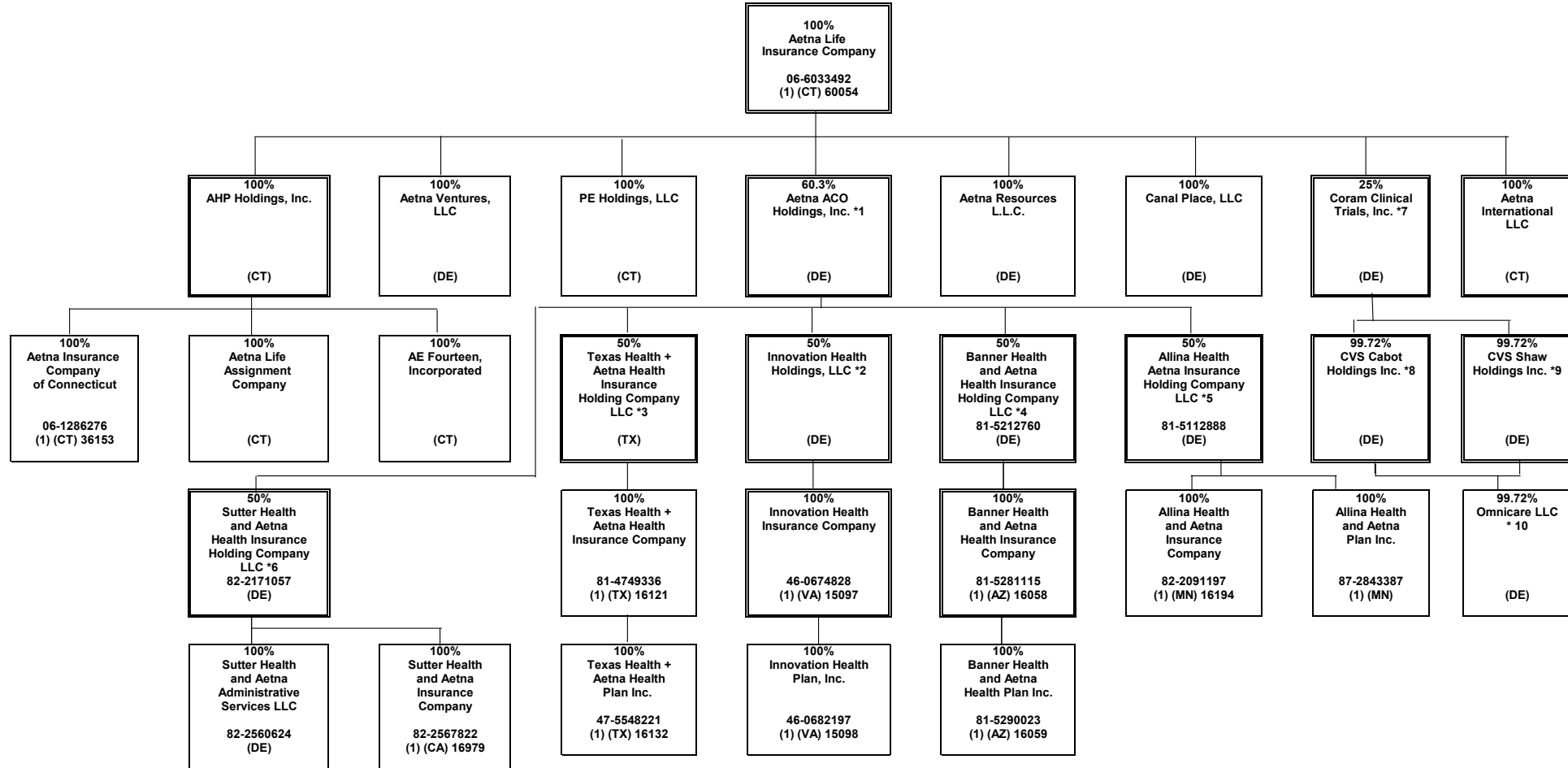


\* Aetna Capital Management, LLC owns 100% of the voting rights of Aetna Partners Diversified Fund, LLC ("APDF"). APDF is a fund of hedge funds and certain subsidiaries of CVS Health Group invest in this fund, which does not confer any managing or controlling ownership interests in APDF.

STATEMENT AS OF MARCH 31, 2022 OF THE SilverScript Insurance Company

SCHEDULE Y - INFORMATION CONCERNING ACTIVITIES OF INSURANCE MEMBERS OF A HOLDING COMPANY GROUP

PART 1 - ORGANIZATIONAL CHART



\*1 Aetna ACO Holdings Inc. is owned by Aetna Life Insurance Company (302 shares); Aetna Health Inc. (PA) (198 shares); and Aetna Health Holdings, LLC (1 share).

\*2 Innovation Health Holdings, LLC is also 50% owned by Inova Health System Foundation.

\*3 Texas Health + Aetna Health Insurance Holding Company LLC is also 50% owned by Texas Health Resources.

\*4 Banner Health and Aetna Health Insurance Holding Company LLC is also 50% owned by Banner Health.

\*5 Allina Health and Aetna Insurance Holding Company LLC is also 50% owned by Allina Health System.

\*6 Sutter Health and Aetna Insurance Holding Company LLC is also 50% owned by Sutter Health Plan Products Organization, LLC.

\*7 Coram Clinical Trials, Inc. is also 75% owned by CVS Pharmacy, Inc.

\*8 CVS Cabot Holdings Inc. is also .28% owned by Aetna Inc.

\*9 CVS Shaw Holdings Inc. is also .28% owned by Aetna Inc.

\*10 Remaining .28% owned by Aetna Inc. CVS Cabot Holdings Inc. and CVS Shaw Holdings Inc. each owning 49.86%.

STATEMENT AS OF MARCH 31, 2022 OF THE SilverScript Insurance Company

**SCHEDULE Y**  
**PART 1A - DETAIL OF INSURANCE HOLDING COMPANY SYSTEM**

1	2	3	4	5	6	7	8	9	10	11	12	13	14	15	16
Group Code	Group Name	NAIC Company Code	ID Number	Federal RSSD	CIK	Name of Securities Exchange if Publicly Traded (U.S. or International)	Names of Parent, Subsidiaries Or Affiliates	Domiciliary Location	Relationship to Reporting Entity	Directly Controlled by (Name of Entity/Person)	Type of Control (Ownership, Board, Management, Attorney-in-Fact, Influence, Other)	If Control is Ownership Provide Percentage	Ultimate Controlling Entity(ies)/Person(s)	Is an SCA Filing Required? (Yes/No)	*
.0001	CVS HEALTH GROUP		05-0494040		0000064803	NYSE	CVS Health Corporation	DE	UIP	Board of Directors	Board of Directors	100.000	CVS Health Corporation	NO	0
.0001	CVS HEALTH GROUP	63444	06-1566092				Accendo Insurance Company	UT	IA	Part D Holding Company, L.L.C.	Ownership	100.000	CVS Health Corporation	NO	0
.0001	CVS HEALTH GROUP	.12575	20-2833904				SilverScript Insurance Company	TN	RE	Part D Holding Company, L.L.C.	Ownership	100.000	CVS Health Corporation	NO	0
.0001	CVS HEALTH GROUP	.00000	05-0340626				CVS Pharmacy, Inc.	RI	UIP	CVS Health Corporation	Ownership	100.000	CVS Health Corporation	NO	0
.0001	CVS HEALTH GROUP	.00000	20-8404182				Caremark Rx, L.L.C.	DE	UIP	CVS Pharmacy, Inc.	Ownership	100.000	CVS Health Corporation	NO	0
.0001	CVS HEALTH GROUP	.00000	61-1715010				Part D Holding Company, L.L.C.	DE	UDP	Caremark Rx, L.L.C.	Ownership	100.000	CVS Health Corporation	NO	0
.0001	CVS HEALTH GROUP	.00000	33-1113587				CVS Caremark Part D Services, L.L.C.	DE	NIA	Caremark Rx, L.L.C.	Ownership	100.000	CVS Health Corporation	NO	0
.0001	CVS HEALTH GROUP	.00000	87-0548860				RxAmerica, L.L.C.	DE	NIA	Caremark Rx, L.L.C.	Ownership	100.000	CVS Health Corporation	NO	0
.0001	CVS HEALTH GROUP	.00000	11-2580136				Caremark Ulysses Holding Corporation	NY	NIA	Caremark Rx, L.L.C.	Ownership	100.000	CVS Health Corporation	NO	0
.0001	CVS HEALTH GROUP	.00000	87-0804047				MemberHealth, L.L.C.	DE	NIA	Caremark Ulysses Holding Corporation	Ownership	100.000	CVS Health Corporation	NO	0
.0001	CVS HEALTH GROUP	.00000	05-0500188				CVS Caremark Indemnity, Ltd.	BMU	IA	CVS Foreign, Inc.	Ownership	100.000	CVS Health Corporation	NO	0
.0001	CVS HEALTH GROUP	.00000	27-1298765				UAC Holding, Inc.	DE	NIA	Caremark Ulysses Holding Corporation	Ownership	100.000	CVS Health Corporation	NO	0
.0001	CVS HEALTH GROUP	.00000	05-0497953				CVS Foreign, Inc.	NY	NIA	CVS Health Corporation	Ownership	100.000	CVS Health Corporation	NO	0
.0001	CVS HEALTH GROUP	.00000	58-2160656				Coram Clinical Trials, Inc.	DE	NIA	CVS Pharmacy, Inc.	Ownership	75.000	CVS Health Corporation	NO	18
.0001	CVS HEALTH GROUP	.00000	23-2229683	3060706	0001122304		Aetna Inc.	PA	NIA	CVS Pharmacy, Inc.	Ownership	100.000	CVS Health Corporation	NO	0
.0001	CVS HEALTH GROUP	.00000	30-0123754				Aetna Health Holdings, LLC	DE	NIA	Aetna Inc.	Ownership	100.000	CVS Health Corporation	NO	0
.0001	CVS HEALTH GROUP	.00000	95-3402799				Aetna Health of California Inc.	CA	IA	Aetna Health Holdings, LLC	Ownership	100.000	CVS Health Corporation	NO	0
.0001	CVS HEALTH GROUP	.95935	23-2442048				Aetna Health Inc.	CT	IA	Aetna Health Holdings, LLC	Ownership	100.000	CVS Health Corporation	NO	0
.0001	CVS HEALTH GROUP	.95088	59-2411584				Aetna Health Inc.	FL	IA	Aetna Health Holdings, LLC	Ownership	100.000	CVS Health Corporation	NO	0
.0001	CVS HEALTH GROUP	.95094	58-1649568				Aetna Health Inc.	GA	IA	Aetna Health Holdings, LLC	Ownership	100.000	CVS Health Corporation	NO	0
.0001	CVS HEALTH GROUP	.95517	01-0504252				Aetna Health Inc.	ME	IA	Aetna Health Holdings, LLC	Ownership	100.000	CVS Health Corporation	NO	0
.0001	CVS HEALTH GROUP	.95756	23-2861565				Aetna Health of Michigan Inc.	MI	IA	Aetna Health Holdings, LLC	Ownership	100.000	CVS Health Corporation	NO	0
.0001	CVS HEALTH GROUP	.95287	52-1270921				Aetna Health Inc.	NJ	IA	Aetna Health Holdings, LLC	Ownership	100.000	CVS Health Corporation	NO	0
.0001	CVS HEALTH GROUP	.95234	22-2663623				Aetna Health Inc.	NY	IA	Aetna Health Holdings, LLC	Ownership	100.000	CVS Health Corporation	NO	0
.0001	CVS HEALTH GROUP	.14408	45-2634734				Aetna Better Health Inc.	NY	IA	Aetna Health Inc. (NY)	Ownership	100.000	CVS Health Corporation	NO	0
.0001	CVS HEALTH GROUP	.95490	76-0189680				Aetna Health Inc.	TX	IA	Aetna Health Holdings, LLC	Ownership	100.000	CVS Health Corporation	NO	0
.0001	CVS HEALTH GROUP	.95040	74-1844335				Aetna Better Health of Texas Inc.	TX	IA	Aetna Health Holdings, LLC	Ownership	100.000	CVS Health Corporation	NO	0
.0001	CVS HEALTH GROUP	.12328	20-2207534				Aetna Better Health Inc.	GA	IA	Aetna Health Holdings, LLC	Ownership	100.000	CVS Health Corporation	NO	0
.0001	CVS HEALTH GROUP	.00000	06-1160812				Aetna Dental of California Inc.	CA	IA	Aetna Health Holdings, LLC	Ownership	100.000	CVS Health Corporation	NO	0
.0001	CVS HEALTH GROUP	.11183	22-2990909				Aetna Dental Inc.	NJ	IA	Aetna Health Holdings, LLC	Ownership	100.000	CVS Health Corporation	NO	0
.0001	CVS HEALTH GROUP	.95910	06-1177531				Aetna Dental Inc.	TX	IA	Aetna Health Holdings, LLC	Ownership	100.000	CVS Health Corporation	NO	0
.0001	CVS HEALTH GROUP	.00000	30-0123760				Aetna Rx Home Delivery, LLC	DE	NIA	Aetna Health Holdings, LLC	Ownership	100.000	CVS Health Corporation	NO	0
.0001	CVS HEALTH GROUP	.00000	13-3670795				Aetna Health Management, LLC	DE	NIA	Aetna Health Holdings, LLC	Ownership	100.000	CVS Health Corporation	NO	0
.0001	CVS HEALTH GROUP	.00000	22-3187443				Aetna Ireland Inc.	DE	NIA	Aetna Health Holdings, LLC	Ownership	100.000	CVS Health Corporation	NO	0
.0001	CVS HEALTH GROUP	.00000	57-1209768				Aetna Specialty Pharmacy, LLC	DE	NIA	Aetna Health Holdings, LLC	Ownership	100.000	CVS Health Corporation	NO	0
.0001	CVS HEALTH GROUP	.00000	20-1274723				Cofinity, Inc.	DE	NIA	Aetna Health Holdings, LLC	Ownership	100.000	CVS Health Corporation	NO	0
.0001	CVS HEALTH GROUP	.00000	23-2671370				@Credentials Inc.	DE	NIA	Aetna Health Holdings, LLC	Ownership	100.000	CVS Health Corporation	NO	0
.0001	CVS HEALTH GROUP	.00000					Aetna Services (Thailand) Limited	THA	NIA	Health Care Management Co. Ltd.	Ownership	100.000	CVS Health Corporation	NO	17
.0001	CVS HEALTH GROUP	.13735	27-0563973				Aetna Better Health Inc.	PA	IA	Aetna Health Holdings, LLC	Ownership	100.000	CVS Health Corporation	NO	0
.0001	CVS HEALTH GROUP	.13174	26-2867560				Aetna Better Health Inc.	CT	IA	Aetna Health Holdings, LLC	Ownership	100.000	CVS Health Corporation	NO	0
.0001	CVS HEALTH GROUP	.00000	47-5178095				Aetna Better Health of California Inc.	CA	IA	Aetna Health Holdings, LLC	Ownership	100.000	CVS Health Corporation	NO	0
.0001	CVS HEALTH GROUP	.14043	27-2512072				Aetna Better Health Premier Plan MMAI Inc.	IL	IA	Aetna Health Holdings, LLC	Ownership	100.000	CVS Health Corporation	NO	0
.0001	CVS HEALTH GROUP	.15805	47-3850677				Aetna Health of Ohio Inc.	OH	IA	Aetna Health Holdings, LLC	Ownership	100.000	CVS Health Corporation	NO	0
.0001	CVS HEALTH GROUP	.15616	80-0629718				Aetna Better Health, Inc.	LA	IA	Aetna Health Holdings, LLC	Ownership	100.000	CVS Health Corporation	NO	0
.0001	CVS HEALTH GROUP	.00000	80-0671703				Aetna Florida Inc.	FL	NIA	Aetna Health Holdings, LLC	Ownership	100.000	CVS Health Corporation	NO	0
.0001	CVS HEALTH GROUP	.14229	45-2764938				Aetna Better Health Inc.	OH	IA	Aetna Health Holdings, LLC	Ownership	100.000	CVS Health Corporation	NO	0
.0001	CVS HEALTH GROUP	.15611	46-3203088				Aetna Better Health Inc.	NJ	IA	Aetna Health Holdings, LLC	Ownership	100.000	CVS Health Corporation	NO	0
.0001	CVS HEALTH GROUP	.15919	81-1143850				Aetna Better Health of Oklahoma Inc.	OK	IA	Aetna Health Holdings, LLC	Ownership	100.000	CVS Health Corporation	NO	0
.0001	CVS HEALTH GROUP	.00000	04-2708160				Aetna Student Health Agency Inc.	MA	NIA	Aetna Health Holdings, LLC	Ownership	100.000	CVS Health Corporation	NO	0
.0001	CVS HEALTH GROUP	.00000	73-1702453				Delaware Physicians Care, Incorporated	DE	NIA	Aetna Health Holdings, LLC	Ownership	100.000	CVS Health Corporation	NO	0
.0001	CVS HEALTH GROUP	.00000	01-0826783				Schaller Anderson Medical Administrators, Incorporated	DE	NIA	Aetna Health Holdings, LLC	Ownership	100.000	CVS Health Corporation	NO	0
.0001	CVS HEALTH GROUP	.00000	86-0842559				Aetna Medicaid Administrators LLC	AZ	NIA	Aetna Health Holdings, LLC	Ownership	100.000	CVS Health Corporation	NO	0
.0001	CVS HEALTH GROUP	.00000	45-2944270				iTriage, LLC	DE	NIA	Aetna Health Holdings, LLC	Ownership	100.000	CVS Health Corporation	NO	0

STATEMENT AS OF MARCH 31, 2022 OF THE SilverScript Insurance Company

**SCHEDULE Y**

**PART 1A - DETAIL OF INSURANCE HOLDING COMPANY SYSTEM**

1	2	3	4	5	6	7	8	9	10	11	12	13	14	15	16
Group Code	Group Name	NAIC Company Code	ID Number	Federal RSSD	CIK	Name of Securities Exchange if Publicly Traded (U.S. or International)	Names of Parent, Subsidiaries Or Affiliates	Domiciliary Location	Relationship to Reporting Entity	Directly Controlled by (Name of Entity/Person)	Type of Control (Ownership, Board, Management, Attorney-in-Fact, Influence, Other)	If Control is Ownership Provide Percentage	Ultimate Controlling Entity(ies)/Person(s)	Is an SCA Filing Required? (Yes/No)	*
0001	CVS HEALTH GROUP	00000	16-1471176				Prodigy Health Group, Inc.	DE	NIA	Aetna Health Holdings, LLC	Ownership	100.000	CVS Health Corporation	NO	0
0001	CVS HEALTH GROUP	00000	45-4901541				Aetna ACO Holdings, Inc.	DE	NIA	Aetna Health Holdings, LLC	Ownership	0.200	CVS Health Corporation	YES	3
0001	CVS HEALTH GROUP	00000	74-2879984				Medical Examinations of New York, P.C.	NY	NIA	Aetna Health Holdings, LLC	Ownership	100.000	CVS Health Corporation	NO	0
0001	CVS HEALTH GROUP	00000	45-5527797				Innovation Health Holdings, LLC	DE	NIA	Aetna ACO Holdings, Inc.	Ownership	50.000	CVS Health Corporation	NO	6
0001	CVS HEALTH GROUP	15097	46-0674828				Innovation Health Insurance Company	VA	IA	Innovation Health Holdings, LLC	Ownership	100.000	CVS Health Corporation	NO	0
0001	CVS HEALTH GROUP	15098	46-0682197				Innovation Health Plan, Inc.	VA	IA	Innovation Health Insurance Company	Ownership	100.000	CVS Health Corporation	NO	0
0001	CVS HEALTH GROUP	00000	81-3789357				Texas Health + Aetna Health Insurance Holding Company LLC	TX	NIA	Aetna ACO Holdings, Inc.	Ownership	50.000	CVS Health Corporation	NO	8
0001	CVS HEALTH GROUP	16121	81-4749336				Texas Health + Aetna Health Insurance Company	TX	IA	Texas Health + Aetna Health Insurance Holding Company LLC	Ownership	100.000	CVS Health Corporation	NO	0
0001	CVS HEALTH GROUP	16132	47-5548221				Texas Health + Aetna Health Plan Inc.	TX	IA	Company	Ownership	100.000	CVS Health Corporation	NO	0
0001	CVS HEALTH GROUP	95109	23-2169745				Aetna Health Inc.	PA	IA	Aetna Health Holdings, LLC	Ownership	100.000	CVS Health Corporation	NO	0
0001	CVS HEALTH GROUP	00000	45-4901541				Aetna ACO Holdings, Inc.	DE	NIA	Aetna Health Inc. (PA)	Ownership	39.500	CVS Health Corporation	YES	3
0001	CVS HEALTH GROUP	00000	20-0438576				Niagara Re, Inc.	NY	NIA	Prodigy Health Group, Inc.	Ownership	100.000	CVS Health Corporation	NO	0
0001	CVS HEALTH GROUP	00000	52-2200070				Performax, Inc.	DE	NIA	Prodigy Health Group, Inc.	Ownership	100.000	CVS Health Corporation	NO	0
0001	CVS HEALTH GROUP	00000	87-0632355				Scrip World, LLC	UT	NIA	Prodigy Health Group, Inc.	Ownership	100.000	CVS Health Corporation	NO	0
0001	CVS HEALTH GROUP	00000	27-1760756				Precision Benefit Services, Inc.	DE	NIA	Prodigy Health Group, Inc.	Ownership	100.000	CVS Health Corporation	NO	0
0001	CVS HEALTH GROUP	00000	31-1368946				American Health Holding, Inc.	OH	NIA	Prodigy Health Group, Inc.	Ownership	100.000	CVS Health Corporation	NO	0
0001	CVS HEALTH GROUP	00000	16-1264154				Meritain Health, Inc.	NY	NIA	Prodigy Health Group, Inc.	Ownership	100.000	CVS Health Corporation	NO	0
0001	CVS HEALTH GROUP	00000	86-0537707				Adminco, Inc.	AZ	NIA	Aetna Health Holdings, LLC	Ownership	100.000	CVS Health Corporation	NO	0
0001	CVS HEALTH GROUP	00000	86-0527428				Administrative Enterprises, Inc.	AZ	NIA	Meritain Health, Inc.	Ownership	100.000	CVS Health Corporation	NO	0
0001	CVS HEALTH GROUP	00000	16-1684061				U.S. Healthcare Holdings, LLC	OH	NIA	Meritain Health, Inc.	Ownership	100.000	CVS Health Corporation	NO	0
0001	CVS HEALTH GROUP	00000	34-1670239				Prime Net, Inc.	OH	NIA	Meritain Health, Inc.	Ownership	100.000	CVS Health Corporation	NO	0
0001	CVS HEALTH GROUP	00000	34-1348032				Professional Risk Management, Inc.	OH	NIA	Meritain Health, Inc.	Ownership	100.000	CVS Health Corporation	NO	0
0001	CVS HEALTH GROUP	68500	62-1181209				Continental Life Insurance Company of Brentwood, Tennessee	TN	IA	Aetna Inc.	Ownership	100.000	CVS Health Corporation	NO	0
0001	CVS HEALTH GROUP	12321	20-2901054				American Continental Insurance Company	TN	IA	Continental Life Insurance Company of Brentwood, Tennessee	Ownership	100.000	CVS Health Corporation	NO	0
0001	CVS HEALTH GROUP	60054	06-6033492				Aetna Life Insurance Company	CT	IA	Aetna Inc.	Ownership	100.000	CVS Health Corporation	NO	0
0001	CVS HEALTH GROUP	00000	45-4901541				Aetna ACO Holdings, Inc.	DE	NIA	Aetna Life Insurance Company	Ownership	60.300	CVS Health Corporation	YES	3
0001	CVS HEALTH GROUP	00000	06-1270755				AHP Holdings, Inc.	CT	NIA	Aetna Life Insurance Company	Ownership	100.000	CVS Health Corporation	NO	0
0001	CVS HEALTH GROUP	36153	06-1286276				Aetna Insurance Company of Connecticut	CT	IA	AHP Holdings, Inc.	Ownership	100.000	CVS Health Corporation	NO	0
0001	CVS HEALTH GROUP	00000	06-1028469				AE Fourteen, Incorporated	CT	NIA	AHP Holdings, Inc.	Ownership	100.000	CVS Health Corporation	NO	0
0001	CVS HEALTH GROUP	00000	06-1373153				Aetna Life Assignment Company	CT	NIA	AHP Holdings, Inc.	Ownership	100.000	CVS Health Corporation	NO	0
0001	CVS HEALTH GROUP	00000	20-3678339				PE Holdings, LLC	CT	NIA	Aetna Life Insurance Company	Ownership	100.000	CVS Health Corporation	NO	0
0001	CVS HEALTH GROUP	00000	06-1423207				Aetna Resources L.L.C.	DE	NIA	Aetna Life Insurance Company	Ownership	100.000	CVS Health Corporation	NO	0
0001	CVS HEALTH GROUP	00000					Canal Place, LLC	DE	NIA	Aetna Life Insurance Company	Ownership	100.000	CVS Health Corporation	NO	0
0001	CVS HEALTH GROUP	00000	20-3180700				Aetna Ventures, LLC	DE	NIA	Aetna Life Insurance Company	Ownership	100.000	CVS Health Corporation	NO	0
0001	CVS HEALTH GROUP	00000	58-2160656				Coram Clinical Trials, Inc.	DE	NIA	Aetna Life Insurance Company	Ownership	25.000	CVS Health Corporation	NO	18
0001	CVS HEALTH GROUP	00000	85-3918720				CVS Cabot Holdings Inc.	DE	NIA	Coram Clinical Trials, Inc.	Ownership	99.720	CVS Health Corporation	NO	19
0001	CVS HEALTH GROUP	00000	85-3918567				CVS Shaw Holdings Inc.	DE	NIA	Coram Clinical Trials, Inc.	Ownership	99.720	CVS Health Corporation	NO	20
0001	CVS HEALTH GROUP	00000	31-1001351				Omnicare, LLC	DE	NIA	CVS Cabot Holdings Inc	Ownership	49.860	CVS Health Corporation	NO	21
0001	CVS HEALTH GROUP	00000	31-1001351				Omnicare, LLC	DE	NIA	CVS Shaw Holdings Inc	Ownership	49.860	CVS Health Corporation	NO	21
0001	CVS HEALTH GROUP	00000	41-2035961				Aetna Financial Holdings, LLC	DE	NIA	Aetna Inc.	Ownership	100.000	CVS Health Corporation	NO	0
0001	CVS HEALTH GROUP	00000	26-2030792				Aetna Asset Advisors, LLC	DE	NIA	Aetna Financial Holdings, LLC	Ownership	100.000	CVS Health Corporation	NO	0
0001	CVS HEALTH GROUP	00000	23-2354500				U.S. Healthcare Properties, Inc.	PA	NIA	Aetna Financial Holdings, LLC	Ownership	100.000	CVS Health Corporation	NO	0
0001	CVS HEALTH GROUP	00000	38-3704481				Aetna Capital Management, LLC	DE	NIA	Aetna Financial Holdings, LLC	Ownership	100.000	CVS Health Corporation	NO	0
0001	CVS HEALTH GROUP	00000	11-3667142		0001314522		Aetna Partners Diversified Fund, LLC	DE	NIA	Aetna Capital Management, LLC	Ownership	100.000	CVS Health Corporation	NO	1
0001	CVS HEALTH GROUP	00000	20-0446676				Aetna Workers' Comp Access, LLC	DE	NIA	Aetna Financial Holdings, LLC	Ownership	100.000	CVS Health Corporation	NO	0
0001	CVS HEALTH GROUP	00000	20-0446713				Aetna Behavioral Health, LLC	DE	NIA	Aetna Financial Holdings, LLC	Ownership	100.000	CVS Health Corporation	NO	0
0001	CVS HEALTH GROUP	00000	23-2670015				Managed Care Coordinators, Inc.	DE	NIA	Aetna Financial Holdings, LLC	Ownership	100.000	CVS Health Corporation	NO	0
0001	CVS HEALTH GROUP	00000	59-3269144				Horizon Behavioral Services, LLC	DE	NIA	Aetna Financial Holdings, LLC	Ownership	100.000	CVS Health Corporation	NO	0
0001	CVS HEALTH GROUP	00000	61-1193498				Employee Assistance Services, LLC	KY	NIA	Horizon Behavioral Services, LLC	Ownership	100.000	CVS Health Corporation	NO	0

STATEMENT AS OF MARCH 31, 2022 OF THE SilverScript Insurance Company

**SCHEDULE Y**

**PART 1A - DETAIL OF INSURANCE HOLDING COMPANY SYSTEM**

1	2	3	4	5	6	7	8	9	10	11	12	13	14	15	16
Group Code	Group Name	NAIC Company Code	ID Number	Federal RSSD	CIK	Name of Securities Exchange if Publicly Traded (U.S. or International)	Names of Parent, Subsidiaries Or Affiliates	Domiciliary Location	Relationship to Reporting Entity	Directly Controlled by (Name of Entity/Person)	Type of Control (Ownership, Board, Management, Attorney-in-Fact, Influence, Other)	If Control is Ownership Provide Percentage	Ultimate Controlling Entity(ies)/Person(s)	Is an SCA Filing Required? (Yes/No)	*
0001	CVS HEALTH GROUP	00000	33-0052273				Health and Human Resource Center, Inc.	CA	IA	Horizon Behavioral Services, LLC	Ownership	100.000	CVS Health Corporation	NO	0
0001	CVS HEALTH GROUP	00000	75-2420973				Resources for Living, LLC	TX	NIA	Horizon Behavioral Services, LLC	Ownership	100.000	CVS Health Corporation	NO	0
0001	CVS HEALTH GROUP	00000	36-3681261				The Vasquez Group Inc.	IL	NIA	Horizon Behavioral Services, LLC	Ownership	100.000	CVS Health Corporation	NO	0
0001	CVS HEALTH GROUP	00000	22-3178125				Work and Family Benefits, Inc.	NJ	NIA	Horizon Behavioral Services, LLC	Ownership	100.000	CVS Health Corporation	NO	0
0001	CVS HEALTH GROUP	00000	27-1773021				Aetna Card Solutions, LLC	CT	NIA	Aetna Financial Holdings, LLC	Ownership	100.000	CVS Health Corporation	NO	0
0001	CVS HEALTH GROUP	00000	20-5216478				PayFlex Holdings, Inc.	DE	NIA	Aetna Financial Holdings, LLC	Ownership	100.000	CVS Health Corporation	NO	0
0001	CVS HEALTH GROUP	00000	91-1774434				PayFlex Systems USA, Inc.	NE	NIA	PayFlex Holdings, Inc.	Ownership	100.000	CVS Health Corporation	NO	0
0001	CVS HEALTH GROUP	78700	06-0876836				Aetna Health and Life Insurance Company	CT	IA	Aetna Inc.	Ownership	100.000	CVS Health Corporation	NO	0
0001	CVS HEALTH GROUP	72052	23-2710210				Aetna Health Insurance Company	PA	IA	Aetna Inc.	Ownership	100.000	CVS Health Corporation	NO	0
0001	CVS HEALTH GROUP	84450	57-0805126				Aetna Health Insurance Company of New York	NY	IA	Aetna Inc.	Ownership	100.000	CVS Health Corporation	NO	0
0001	CVS HEALTH GROUP	00000	06-1571642				Aetna International LLC	CT	NIA	Aetna Life Insurance Company	Ownership	100.000	CVS Health Corporation	NO	0
0001	CVS HEALTH GROUP	00000	98-0211470				Aetna Life & Casualty (Bermuda) Ltd.	BMU	IA	Aetna International LLC	Ownership	100.000	CVS Health Corporation	NO	0
0001	CVS HEALTH GROUP	00000					Aetna Insurance (Singapore) PTE. LTD.	SGP	IA	Aetna International LLC	Ownership	100.000	CVS Health Corporation	NO	0
0001	CVS HEALTH GROUP	00000	86-1455140				Aetna International Ex Pat LLC	DE	NIA	Aetna International LLC	Ownership	100.000	CVS Health Corporation	NO	0
0001	CVS HEALTH GROUP	00000					Aetna Global Benefits (Bermuda) Limited	BMU	NIA	Aetna International LLC	Ownership	100.000	CVS Health Corporation	NO	0
0001	CVS HEALTH GROUP	00000					Goodhealth Worldwide (Global) Limited	BMU	NIA	Aetna Global Benefits (Bermuda) Limited	Ownership	100.000	CVS Health Corporation	NO	0
0001	CVS HEALTH GROUP	00000					Aetna Global Benefits (Europe) Limited	GBR	NIA	Aetna Global Benefits (Bermuda) Limited	Ownership	100.000	CVS Health Corporation	NO	0
0001	CVS HEALTH GROUP	00000					Goodhealth Worldwide (Asia) Limited	HKG	NIA	Aetna Global Benefits (Bermuda) Limited	Ownership	100.000	CVS Health Corporation	NO	0
0001	CVS HEALTH GROUP	00000					Aetna Global Benefits Limited	ARE	NIA	Aetna Global Benefits (Bermuda) Limited	Ownership	100.000	CVS Health Corporation	NO	0
0001	CVS HEALTH GROUP	00000					PT. Aetna Global Benefits Indonesia	IDN	NIA	Aetna Global Benefits (Bermuda) Limited	Ownership	80.000	CVS Health Corporation	NO	4
0001	CVS HEALTH GROUP	00000					Aetna Global Benefits (Middle East) LLC	ARE	NIA	Aetna Global Benefits (Bermuda) Limited	Ownership	49.000	CVS Health Corporation	NO	5
0001	CVS HEALTH GROUP	00000					Aetna Global Benefits (Asia Pacific) Limited	HKG	NIA	Aetna Global Benefits (Bermuda) Limited	Ownership	100.000	CVS Health Corporation	NO	0
0001	CVS HEALTH GROUP	00000					PT Aetna Management Consulting	IDN	NIA	Aetna International LLC	Ownership	77.000	CVS Health Corporation	NO	0
0001	CVS HEALTH GROUP	00000					Spinnaker Topco Limited	BMU	NIA	Aetna Global Benefits (Bermuda) Limited	Ownership	100.000	CVS Health Corporation	NO	0
0001	CVS HEALTH GROUP	00000					Spinnaker Bidco Limited	GBR	NIA	Spinnaker Topco Limited	Ownership	100.000	CVS Health Corporation	NO	0
0001	CVS HEALTH GROUP	00000					Aetna Holdco (UK) Limited	GBR	NIA	Spinnaker Bidco Limited	Ownership	100.000	CVS Health Corporation	NO	0
0001	CVS HEALTH GROUP	00000					PT Aetna Management Consulting	IDN	NIA	Aetna Global Benefits (Asia Pacific) Limited	Ownership	23.000	CVS Health Corporation	NO	0
0001	CVS HEALTH GROUP	00000					Aetna Global Benefits (UK) Limited	GBR	NIA	Aetna Holdco (UK) Limited	Ownership	100.000	CVS Health Corporation	NO	0
0001	CVS HEALTH GROUP	00000					Aetna Insurance Company Limited	GBR	IA	Aetna Holdco (UK) Limited	Ownership	100.000	CVS Health Corporation	NO	0
0001	CVS HEALTH GROUP	00000					Indian Health Organisation Private Limited	IND	NIA	Aetna Global Benefits (Asia Pacific) Limited	Ownership	0.020	CVS Health Corporation	NO	2
0001	CVS HEALTH GROUP	00000					Aetna Health Insurance Company of Europe DAC	IRL	IA	Aetna International LLC	Ownership	100.000	CVS Health Corporation	NO	0
0001	CVS HEALTH GROUP	00000					Aetna (Shanghai) Enterprise Services Co. Ltd.	CHN	NIA	Aetna International LLC	Ownership	100.000	CVS Health Corporation	NO	0
0001	CVS HEALTH GROUP	00000					Aetna (Beijing) Enterprise Management Services Co., Ltd.	CHN	NIA	Aetna (Shanghai) Enterprise Services Co. Ltd.	Ownership	100.000	CVS Health Corporation	NO	0
0001	CVS HEALTH GROUP	00000					Aetna Global Benefits (Singapore) PTE. LTD.	SGP	NIA	Aetna International LLC	Ownership	100.000	CVS Health Corporation	NO	0
0001	CVS HEALTH GROUP	00000					Indian Health Organisation Private Limited	IND	NIA	Aetna Global Benefits (Singapore) PTE, LTD.	Ownership	99.980	CVS Health Corporation	NO	2
0001	CVS HEALTH GROUP	00000	22-2578985				AUSHC Holdings, Inc.	CT	NIA	Aetna Inc.	Ownership	100.000	CVS Health Corporation	NO	0
0001	CVS HEALTH GROUP	00000					Aetna Global Holdings Limited	GBR	NIA	Aetna International LLC	Ownership	100.000	CVS Health Corporation	NO	0
0001	CVS HEALTH GROUP	00000					Aetna Insurance (Hong Kong) Limited	HKG	IA	Aetna Global Holdings Limited	Ownership	100.000	CVS Health Corporation	NO	0
0001	CVS HEALTH GROUP	00000	06-1182176				PHPSNE Parent Corporation	DE	NIA	AUSHC Holdings, Inc.	Ownership	55.000	CVS Health Corporation	NO	7
0001	CVS HEALTH GROUP	00000	52-2182411				Active Health Management, Inc.	DE	NIA	Aetna Inc.	Ownership	100.000	CVS Health Corporation	NO	0
0001	CVS HEALTH GROUP	00000	47-0970432				Health Data & Management Solutions, Inc.	DE	NIA	Active Health Management, Inc.	Ownership	100.000	CVS Health Corporation	NO	0
0001	CVS HEALTH GROUP	00000	23-2604867				Aetna Integrated Informatics, Inc.	PA	NIA	Active Health Management, Inc.	Ownership	100.000	CVS Health Corporation	NO	0
0001	CVS HEALTH GROUP	13980	27-2192415				Health Re, Inc.	VT	IA	Aetna Inc.	Ownership	100.000	CVS Health Corporation	NO	0
0001	CVS HEALTH GROUP	00000	81-0579372				Phoenix Data Solutions LLC	DE	NIA	Aetna Inc.	Ownership	100.000	CVS Health Corporation	NO	0
0001	CVS HEALTH GROUP	00000	51-0029326				ASI Wings, LLC	DE	NIA	Aetna Inc.	Ownership	100.000	CVS Health Corporation	NO	0
0001	CVS HEALTH GROUP	00000	47-4556274				Echo Merger Sub, Inc.	DE	NIA	Aetna Inc.	Ownership	100.000	CVS Health Corporation	NO	0
0001	CVS HEALTH GROUP	00000	47-4547145				Aetna Corporate Services, LLC	DE	NIA	Aetna Inc.	Ownership	100.000	CVS Health Corporation	NO	0

STATEMENT AS OF MARCH 31, 2022 OF THE SilverScript Insurance Company

**SCHEDULE Y**  
**PART 1A - DETAIL OF INSURANCE HOLDING COMPANY SYSTEM**

1	2	3	4	5	6	7	8	9	10	11	12	13	14	15	16
Group Code	Group Name	NAIC Company Code	ID Number	Federal RSSD	CIK	Name of Securities Exchange if Publicly Traded (U.S. or International)	Names of Parent, Subsidiaries Or Affiliates	Domiciliary Location	Relationship to Reporting Entity	Directly Controlled by (Name of Entity/Person)	Type of Control (Ownership, Board, Management, Attorney-in-Fact, Influence, Other)	If Control is Ownership Provide Percentage	Ultimate Controlling Entity(ies)/Person(s)	Is an SCA Filing Required? (Yes/No)	*
.0001	CVS HEALTH GROUP	.00000	85-3918720				CVS Cabot Holdings Inc.	DE	NIA	Aetna Inc.	Ownership	0.280	CVS Health Corporation	NO	19
.0001	CVS HEALTH GROUP	.00000	85-3918567				CVS Shaw Holdings Inc.	DE	NIA	Aetna Inc.	Ownership	0.280	CVS Health Corporation	NO	20
.0001	CVS HEALTH GROUP	.00000	31-1001351				Omnicare, LLC	DE	NIA	Aetna Inc.	Ownership	0.280	CVS Health Corporation	NO	21
.0001	CVS HEALTH GROUP	.81973	75-1296086				Coventry Health and Life Insurance Company	MO	IA	Aetna Health Holdings, LLC	Ownership	100.000	CVS Health Corporation	NO	0
.0001	CVS HEALTH GROUP	.15761	47-3279217				Aetna Better Health of Kentucky Insurance Company	KY	IA	Coventry Health and Life Insurance Company	Ownership	100.000	CVS Health Corporation	NO	0
.0001	CVS HEALTH GROUP	.00000	52-1801446				Group Dental Service, Inc.	MD	NIA	Aetna Health Holdings, LLC	Ownership	100.000	CVS Health Corporation	NO	0
.0001	CVS HEALTH GROUP	.95846	52-2056201				Group Dental Service of Maryland, Inc.	MD	IA	Aetna Health Holdings, LLC	Ownership	100.000	CVS Health Corporation	NO	0
.0001	CVS HEALTH GROUP	.00000	81-4345344				Aetna Network Services LLC	CT	NIA	Aetna Health Holdings, LLC	Ownership	100.000	CVS Health Corporation	NO	0
.0001	CVS HEALTH GROUP	.95241	42-1244752				Aetna Health of Iowa Inc.	IA	IA	Aetna Health Holdings, LLC	Ownership	100.000	CVS Health Corporation	NO	0
.0001	CVS HEALTH GROUP	.95925	42-1308659				Coventry Health Care of Nebraska, Inc.	NE	IA	Aetna Health Holdings, LLC	Ownership	100.000	CVS Health Corporation	NO	0
.0001	CVS HEALTH GROUP	.00000	47-2049117				Aetna Risk Assurance Company of Connecticut Inc.	CT	IA	Aetna Health Holdings, LLC	Ownership	100.000	CVS Health Corporation	NO	0
.0001	CVS HEALTH GROUP	.95173	74-2381406				Aetna Health Inc.	LA	IA	Aetna Health Holdings, LLC	Ownership	100.000	CVS Health Corporation	NO	0
.0001	CVS HEALTH GROUP	.11102	23-2366731				HealthAssurance Pennsylvania, Inc.	PA	RE	Aetna Health Holdings, LLC	Ownership	100.000	CVS Health Corporation	NO	0
.0001	CVS HEALTH GROUP	.00000	47-0854096				Coventry Prescription Management Services, Inc.	NV	NIA	Aetna Health Holdings, LLC	Ownership	100.000	CVS Health Corporation	NO	0
.0001	CVS HEALTH GROUP	.16148	81-3564875				Aetna Better Health of Nevada Inc.	NV	NIA	Aetna Health Holdings, LLC	Ownership	100.000	CVS Health Corporation	NO	0
.0001	CVS HEALTH GROUP	.96555	54-1576305				Coventry Health Care of Virginia, Inc.	VA	IA	Aetna Health Holdings, LLC	Ownership	100.000	CVS Health Corporation	NO	0
.0001	CVS HEALTH GROUP	.00000	01-0646056				Coventry Transplant Network, Inc.	DE	NIA	Aetna Health Holdings, LLC	Ownership	100.000	CVS Health Corporation	NO	0
.0001	CVS HEALTH GROUP	.96377	43-1372307				Coventry Health Care of Missouri, Inc.	MO	IA	Aetna Health Holdings, LLC	Ownership	100.000	CVS Health Corporation	NO	0
.0001	CVS HEALTH GROUP	.95318	43-1702094				Aetna Better Health of Missouri LLC	MO	IA	Aetna Health Holdings, LLC	Ownership	100.000	CVS Health Corporation	NO	0
.0001	CVS HEALTH GROUP	.95408	55-0712129				Coventry Health Care of West Virginia, Inc.	WV	IA	Aetna Health Holdings, LLC	Ownership	100.000	CVS Health Corporation	NO	0
.0001	CVS HEALTH GROUP	.00000	62-1411933				Coventry HealthCare Management Corporation	DE	NIA	Aetna Health Holdings, LLC	Ownership	100.000	CVS Health Corporation	NO	0
.0001	CVS HEALTH GROUP	.15827	47-4352768				Aetna HealthAssurance Pennsylvania, Inc.	PA	IA	Aetna Health Holdings, LLC	Ownership	100.000	CVS Health Corporation	NO	0
.0001	CVS HEALTH GROUP	.95489	48-0840330				Coventry Health Care of Kansas, Inc.	KS	IA	Aetna Health Holdings, LLC	Ownership	100.000	CVS Health Corporation	NO	0
.0001	CVS HEALTH GROUP	.16072	81-3370401				Aetna Better Health of Kansas Inc.	KS	IA	Aetna Health Holdings, LLC	Ownership	100.000	CVS Health Corporation	NO	0
.0001	CVS HEALTH GROUP	.12193	20-1052897				Aetna Better Health of Michigan Inc.	MI	IA	Aetna Health Holdings, LLC	Ownership	100.000	CVS Health Corporation	NO	0
.0001	CVS HEALTH GROUP	.95407	87-0345631				Aetna Health of Utah Inc.	UT	IA	Aetna Health Holdings, LLC	Ownership	100.000	CVS Health Corporation	NO	0
.0001	CVS HEALTH GROUP	.00000	20-4416606				Aetna Better Health of Tennessee Inc.	TN	NIA	Aetna Health Holdings, LLC	Ownership	100.000	CVS Health Corporation	NO	0
.0001	CVS HEALTH GROUP	.74160	37-1241037				Coventry Health Care of Illinois, Inc.	IL	IA	Aetna Health Holdings, LLC	Ownership	100.000	CVS Health Corporation	NO	0
.0001	CVS HEALTH GROUP	.00000	20-8070994				Coventry Health Care National Accounts, Inc.	DE	NIA	Aetna Health Holdings, LLC	Ownership	100.000	CVS Health Corporation	NO	0
.0001	CVS HEALTH GROUP	.00000	20-5185442				Coventry Health Care National Network, Inc.	DE	NIA	Aetna Health Holdings, LLC	Ownership	100.000	CVS Health Corporation	NO	0
.0001	CVS HEALTH GROUP	.00000	26-1293772				Coventry Consumer Advantage, Inc.	DE	NIA	Aetna Health Holdings, LLC	Ownership	100.000	CVS Health Corporation	NO	0
.0001	CVS HEALTH GROUP	.00000	20-1736437				First Health Group Corp.	DE	NIA	Aetna Health Holdings, LLC	Ownership	100.000	CVS Health Corporation	NO	0
.0001	CVS HEALTH GROUP	.90328	38-2242132				First Health Life & Health Insurance Company	TX	IA	First Health Group Corp.	Ownership	100.000	CVS Health Corporation	NO	0
.0001	CVS HEALTH GROUP	.00000	91-1832429				First Choice of the Midwest LLC	SD	NIA	First Health Group Corp.	Ownership	100.000	CVS Health Corporation	NO	0
.0001	CVS HEALTH GROUP	.00000	52-1320522				Claims Administration Corp.	MD	NIA	First Health Group Corp.	Ownership	100.000	CVS Health Corporation	NO	0
.0001	CVS HEALTH GROUP	.00000	20-1130063				Florida Health Plan Administrators, LLC	FL	NIA	Aetna Health Holdings, LLC	Ownership	100.000	CVS Health Corporation	NO	0
.0001	CVS HEALTH GROUP	.95114	65-0986441				Aetna Better Health of Florida Inc.	FL	IA	Florida Health Plan Administrators, LLC	Ownership	100.000	CVS Health Corporation	NO	0
.0001	CVS HEALTH GROUP	.95266	65-0453436				Coventry Health Plan of Florida, Inc.	FL	IA	Florida Health Plan Administrators, LLC	Ownership	100.000	CVS Health Corporation	NO	0
.0001	CVS HEALTH GROUP	.00000	59-3750548				Carefree Insurance Services, Inc.	FL	NIA	Florida Health Plan Administrators, LLC	Ownership	100.000	CVS Health Corporation	NO	0
.0001	CVS HEALTH GROUP	.00000	36-4391310				bswiff LLC	DE	NIA	Aetna Health Holdings, LLC	Ownership	100.000	CVS Health Corporation	NO	0
.0001	CVS HEALTH GROUP	.00000	26-1582982				Virtual Home Healthcare L.L.C.	ARE	NIA	Aetna Global Holdings Limited	Ownership	49.000	CVS Health Corporation	NO	15
.0001	CVS HEALTH GROUP	.00000	72-1448790				MHNet Specialty Services, LLC	MD	NIA	Aetna Health Holdings, LLC	Ownership	100.000	CVS Health Corporation	NO	0
.0001	CVS HEALTH GROUP	.00000	37-1106596				Mental Health Network of New York IPA, Inc.	NY	NIA	MHNet Specialty Services, LLC	Ownership	100.000	CVS Health Corporation	NO	0
.0001	CVS HEALTH GROUP	.00000	72-1106596				Mental Health Associates, Inc.	LA	NIA	MHNet Specialty Services, LLC	Ownership	100.000	CVS Health Corporation	NO	0
.0001	CVS HEALTH GROUP	.00000	20-4276336				MHNet of Florida, Inc.	FL	NIA	MHNet Specialty Services, LLC	Ownership	100.000	CVS Health Corporation	NO	0
.0001	CVS HEALTH GROUP	.16242	81-5030233				Aetna Better Health of Washington, Inc.	WA	IA	Aetna Health Holdings, LLC	Ownership	100.000	CVS Health Corporation	NO	0
.0001	CVS HEALTH GROUP	.00000	81-5212760				Banner Health and Aetna Health Insurance Holding Company LLC	DE	NIA	Aetna ACO Holdings, Inc.	Ownership	50.000	CVS Health Corporation	NO	9

STATEMENT AS OF MARCH 31, 2022 OF THE SilverScript Insurance Company

**SCHEDULE Y**

**PART 1A - DETAIL OF INSURANCE HOLDING COMPANY SYSTEM**

1	2	3	4	5	6	7	8	9	10	11	12	13	14	15	16
Group Code	Group Name	NAIC Company Code	ID Number	Federal RSSD	CIK	Name of Securities Exchange if Publicly Traded (U.S. or International)	Names of Parent, Subsidiaries Or Affiliates	Domi-ciliary Location	Relation-ship to Reporting Entity	Directly Controlled by (Name of Entity/Person)	Type of Control (Ownership, Board, Management, Attorney-in-Fact, Influence, Other)	If Control is Ownership Provide Percentage	Ultimate Controlling Entity(ies)/Person(s)	Is an SCA Filing Re-quired? (Yes/No)	*
..0001	CVS HEALTH GROUP	..16058	81-5281115				Banner Health and Aetna Health Insurance Company	..AZ	..IA	Banner Health and Aetna Health Insurance Holding Company LLC	Ownership	..100.000	CVS Health Corporation	..NO	..0
..0001	CVS HEALTH GROUP	..16059	81-5290023				Banner Health and Aetna Health Plan Inc.	..AZ	..IA	Banner Health and Aetna Health Insurance Company	Ownership	..100.000	CVS Health Corporation	..NO	..0
..0001	CVS HEALTH GROUP	..00000	81-5112888				Allina Health and Aetna Health Insurance Holding Company LLC	..DE	..NIA	Aetna ACO Holdings, Inc.	Ownership	..50.000	CVS Health Corporation	..NO	..10
..0001	CVS HEALTH GROUP	..16194	82-2091197				Allina Health and Aetna Insurance Company	..MN	..IA	Allina Health and Aetna Health Insurance Holding Company LLC	Ownership	..100.000	CVS Health Corporation	..NO	..0
..0001	CVS HEALTH GROUP	..00000	87-2843387				Allina Health and Aetna Health Plan Inc.	..MN	..NIA	Allina Health and Aetna Health Insurance Holding Company LLC	Ownership	..100.000	CVS Health Corporation	..NO	..0
..0001	CVS HEALTH GROUP	..00000	82-2171057				Sutter Health and Aetna Insurance Holding Company LLC	..DE	..NIA	Aetna ACO Holdings, Inc.	Ownership	..50.000	CVS Health Corporation	..NO	..11
..0001	CVS HEALTH GROUP	..00000	82-2560624				Sutter Health and Aetna Administrative Services LLC	..DE	..NIA	Sutter Health and Aetna Insurance Holding Company LLC	Ownership	..100.000	CVS Health Corporation	..NO	..0
..0001	CVS HEALTH GROUP	..16979	82-2567822				Sutter Health and Aetna Insurance Company	..CA	..IA	Sutter Health and Aetna Insurance Holding Company LLC	Ownership	..100.000	CVS Health Corporation	..NO	..0
..0001	CVS HEALTH GROUP	..00000					Aetna Holdings (Thailand) Limited	..THA	..NIA	Aetna Global Holdings Limited	Ownership	..49.000	CVS Health Corporation	..NO	..12
..0001	CVS HEALTH GROUP	..00000					Aetna Health Insurance (Thailand) Public Company Limited	..THA	..IA	Aetna Global Holdings Limited	Ownership	..25.000	CVS Health Corporation	..NO	..13
..0001	CVS HEALTH GROUP	..00000					Aetna Health Insurance (Thailand) Public Company Limited	..THA	..IA	Minor Health Enterprise Co, Ltd.	Ownership	..46.000	CVS Health Corporation	..NO	..13
..0001	CVS HEALTH GROUP	..00000					Aetna Health Insurance (Thailand) Public Company Limited	..THA	..IA	Health Care Management Co. Ltd.	Ownership	..28.000	CVS Health Corporation	..NO	..13
..0001	CVS HEALTH GROUP	..00000					Health Care Management Co. Ltd.	..THA	..NIA	Aetna Global Holdings Limited	Ownership	..49.000	CVS Health Corporation	..NO	..16
..0001	CVS HEALTH GROUP	..00000					Minor Health Enterprise Co, Ltd.	..THA	..NIA	Aetna Global Holdings Limited	Ownership	..25.000	CVS Health Corporation	..NO	..14
..0001	CVS HEALTH GROUP	..00000					Minor Health Enterprise Co, Ltd.	..THA	..NIA	Aetna Holdings (Thailand) Limited	Ownership	..75.000	CVS Health Corporation	..NO	..14
..0001	CVS HEALTH GROUP	..00000					Health Care Management Co. Ltd.	..THA	..NIA	Aetna Holdings (Thailand) Limited	Ownership	..51.000	CVS Health Corporation	..NO	..16
..0001	CVS HEALTH GROUP	..00000					Aetna Global Benefits (Bahamas) Limited	..BHS	..NIA	Aetna Global Benefits (Bermuda) Limited	Ownership	..100.000	CVS Health Corporation	..NO	..0
..0001	CVS HEALTH GROUP	..16558	82-3333789				Aetna Better Health of North Carolina Inc.	..NC	..IA	Aetna Health Holdings, LLC	Ownership	..100.000	CVS Health Corporation	..NO	..0
..0001	CVS HEALTH GROUP	..14053	27-2186150				Aetna Better Health of Illinois Inc.	..IL	..IA	Aetna Health Holdings, LLC	Ownership	..100.000	CVS Health Corporation	..NO	..0
..0001	CVS HEALTH GROUP		87-3223066				Aetna Better Health of Indiana Inc.	..IN	..NIA	Aetna Health Holdings, LLC	Ownership	..100.000	CVS Health Corporation	..NO	..0

Asterisk	Explanation
1	Aetna Capital Management, LLC owns 100% of the voting rights of Aetna Partners Diversified Fund, LLC ("APDF"). APDF is a fund of hedge funds and certain subsidiaries of CVS Health Group invest in this fund, which does not confer any managing or controlling ownership interests in APDF.
2	Indian Health Organisation Private Limited is 0.019857% owned by Aetna Global Benefits (Asia Pacific) and 99.980143% owned by Aetna Global Benefits (Singapore) PTE. LTD.
3	Aetna ACO Holdings Inc. is owned by Aetna Life Insurance Company (302 shares); Aetna Health Inc. (PA) (198 shares); and Aetna Health Holdings, LLC (1 share).
4	PT. Aetna Global Benefits Indonesia is also 20% owned by Suhatsyah Rivai, Aetna's Nominee.
5	Aetna Global Benefits (Middle East) LLC is also 51% owned by Euro Gulf LLC, Aetna's Nominee.
6	Innovation Health Holdings LLC. is also 50% owned by Inova Health System Foundation.
7	PHPSNE Parent Corporation is 55% owned by AUSHC Holdings, Inc. The remaining 45% is owned by thirteen different hospitals (non-affiliates) which are shareholders with varying degrees of ownership.
8	Texas Health + Aetna Health Insurance Holding Company LLC is also 50% owned by Texas Health Resources.
9	Banner Health and Aetna Health Insurance Holding Company LLC is also 50% owned by Banner Health.
10	Allina Health and Aetna Insurance Holding Company LLC is also 50% owned by Allina Health System.
11	Sutter Health and Aetna Insurance Holding Company LLC is also 50% owned by Sutter Health Plan Products Organization, LLC.
12	Aetna Holdings (Thailand) Limited is also 51% owned by Mr. Paiboon Sutantivorakoon plus Aetna Global Benefits (Bermuda) Limited owns 1 share
13	Aetna Health Insurance (Thailand) Public Company Limited is also owned by Aetna Global Benefits (Bermuda) Limited (1 share), Aetna Holdings (Thailand) Limited (1 share), Ms. Saifon Khongjitngam (1 share); Aetna Services (Thailand) Limited (1 share); and Mr. Buncha Tanphragorn (1 share)
14	Minor Health Enterprise Co, Ltd is also (1 share) owned by Aetna Global Benefits (Bermuda) Limited.

STATEMENT AS OF MARCH 31, 2022 OF THE SilverScript Insurance Company

Asterisk	Explanation
15 .....	Virtual Home Health Care L.L.C. is also 51% owned by CBD Commercial Brokers LLC, Aetna's Nominee. ....
16 .....	Health Care Management Co. Ltd. Is also (1 share) owned by Aetna Global Benefits (Bermuda) Limited. ....
17 .....	Aetna Services (Thailand) Limited is also (1 share) owned by Aetna Global Benefits (Bermuda) Limited and (1 share) owned by Aetna Global Holdings Limited. ....
18 .....	Coram Clinical Trials, Inc. is 75% owned by CVS Pharmacy, Inc. and 25% owned by Aetna Life Insurance Company. ....
19 .....	CVS Cabot Holdings Inc is owned 99.72% by Coram Clinical Trials, Inc. and 0.28% owned by Aetna Inc. ....
20 .....	CVS Shaw Holdings Inc is owned 99.72% by Coram Clinical Trials, Inc. and 0.28% owned by Aetna Inc. ....
21 .....	Omnicare, LLC is 0.28% owned by Aetna Inc. The Company is also owned by CVS Cabot Holdings Inc. and CVS Shaw Holdings Inc., with 49.86% each ownership. ....

## SUPPLEMENTAL EXHIBITS AND SCHEDULES INTERROGATORIES

The following supplemental reports are required to be filed as part of your statement filing. However, in the event that your company does not transact the type of business for which the special report must be filed, your response of NO to the specific interrogatory will be accepted in lieu of filing a "NONE" report and a bar code will be printed below. If the supplement is required of your company but is not being filed for whatever reason enter SEE EXPLANATION and provide an explanation following the interrogatory questions.

	Response
1. Will the Medicare Part D Coverage Supplement be filed with the state of domicile and the NAIC with this statement? .....	YES

**AUGUST FILING**

2. Will the regulator-only (non-public) Communication of Internal Control Related Matters Noted in Audit be filed with the state of domicile and electronically with the NAIC (as a regulator-only non-public document) by August 1? The response for 1st and 3rd quarters should be N/A. A NO response resulting with a bar code is only appropriate in the 2nd quarter. ....	N/A
--	-----

Explanation:

Bar Code:

**OVERFLOW PAGE FOR WRITE-INS**

STATEMENT AS OF MARCH 31, 2022 OF THE SilverScript Insurance Company

**SCHEDULE A - VERIFICATION**

Real Estate

	1 Year to Date	2 Prior Year Ended December 31
1. Book/adjusted carrying value, December 31 of prior year		
2. Cost of acquired:		
2.1 Actual cost at time of acquisition		
2.2 Additional investment made after acquisition		
3. Current year change in encumbrances		
4. Total gain (loss) on disposals		
5. Deduct amounts received on disposals		
6. Total foreign exchange change in book/adjusted carrying value		
7. Deduct current year's other than temporary impairment recognized		
8. Deduct current year's depreciation		
9. Book/adjusted carrying value at the end of current period (Lines 1+2+3+4-5+6-7-8)		
10. Deduct total nonadmitted amounts		
11. Statement value at end of current period (Line 9 minus Line 10)		

**NONE**

**SCHEDULE B - VERIFICATION**

Mortgage Loans

	1 Year to Date	2 Prior Year Ended December 31
1. Book value/recorded investment excluding accrued interest, December 31 of prior year		
2. Cost of acquired:		
2.1 Actual cost at time of acquisition		
2.2 Additional investment made after acquisition		
3. Capitalized deferred interest and other		
4. Accrual of discount		
5. Unrealized valuation increase (decrease)		
6. Total gain (loss) on disposals		
7. Deduct amounts received on disposals		
8. Deduct amortization of premium and mortgage interest paid and commitment fees		
9. Total foreign exchange change in book value/recorded investment excluding accrued interest		
10. Deduct current year's other than temporary impairment recognized		
11. Book value/recorded investment excluding accrued interest at end of current period (Lines 1+2+3+4+5+6-7-8+9-10)		
12. Total valuation allowance		
13. Subtotal (Line 11 plus Line 12)		
14. Deduct total nonadmitted amounts		
15. Statement value at end of current period (Line 13 minus Line 14)		

**NONE**

**SCHEDULE BA - VERIFICATION**

Other Long-Term Invested Assets

	1 Year to Date	2 Prior Year Ended December 31
1. Book/adjusted carrying value, December 31 of prior year		
2. Cost of acquired:		
2.1 Actual cost at time of acquisition		
2.2 Additional investment made after acquisition		
3. Capitalized deferred interest and other		
4. Accrual of discount		
5. Unrealized valuation increase (decrease)		
6. Total gain (loss) on disposals		
7. Deduct amounts received on disposals		
8. Deduct amortization of premium and depreciation		
9. Total foreign exchange change in book/adjusted carrying value		
10. Deduct current year's other than temporary impairment recognized		
11. Book/adjusted carrying value at end of current period (Lines 1+2+3+4+5+6-7-8+9-10)		
12. Deduct total nonadmitted amounts		
13. Statement value at end of current period (Line 11 minus Line 12)		

**NONE**

**SCHEDULE D - VERIFICATION**

Bonds and Stocks

	1 Year to Date	2 Prior Year Ended December 31
1. Book/adjusted carrying value of bonds and stocks, December 31 of prior year	3,914,481	4,128,827
2. Cost of bonds and stocks acquired	117,918	3,330,085
3. Accrual of discount	1,926	4,565
4. Unrealized valuation increase (decrease)	0	
5. Total gain (loss) on disposals	0	
6. Deduct consideration for bonds and stocks disposed of	0	3,500,000
7. Deduct amortization of premium	5,300	20,977
8. Total foreign exchange change in book/adjusted carrying value	0	
9. Deduct current year's other than temporary impairment recognized	0	28,019
10. Total investment income recognized as a result of prepayment penalties and/or acceleration fees	0	
11. Book/adjusted carrying value at end of current period (Lines 1+2+3+4+5-6-7+8-9+10)	4,029,025	3,914,481
12. Deduct total nonadmitted amounts	0	
13. Statement value at end of current period (Line 11 minus Line 12)	4,029,025	3,914,481

STATEMENT AS OF MARCH 31, 2022 OF THE SilverScript Insurance Company

**SCHEDULE D - PART 1B**

Showing the Acquisitions, Dispositions and Non-Trading Activity  
During the Current Quarter for all Bonds and Preferred Stock by NAIC Designation

NAIC Designation	1 Book/Adjusted Carrying Value Beginning of Current Quarter	2 Acquisitions During Current Quarter	3 Dispositions During Current Quarter	4 Non-Trading Activity During Current Quarter	5 Book/Adjusted Carrying Value End of First Quarter	6 Book/Adjusted Carrying Value End of Second Quarter	7 Book/Adjusted Carrying Value End of Third Quarter	8 Book/Adjusted Carrying Value December 31 Prior Year
<b>BONDS</b>								
1. NAIC 1 (a) .....	7,544,220	3,731,835	3,715,911	(2,011)	7,558,133	0	0	7,544,220
2. NAIC 2 (a) .....	0	0	0	0	0	0	0	0
3. NAIC 3 (a) .....	0	0	0	0	0	0	0	0
4. NAIC 4 (a) .....	0	0	0	0	0	0	0	0
5. NAIC 5 (a) .....	0	0	0	0	0	0	0	0
6. NAIC 6 (a) .....	0	0	0	0	0	0	0	0
7. Total Bonds	7,544,220	3,731,835	3,715,911	(2,011)	7,558,133	0	0	7,544,220
<b>PREFERRED STOCK</b>								
8. NAIC 1 .....	0	0	0	0	0	0	0	0
9. NAIC 2 .....	0	0	0	0	0	0	0	0
10. NAIC 3 .....	0	0	0	0	0	0	0	0
11. NAIC 4 .....	0	0	0	0	0	0	0	0
12. NAIC 5 .....	0	0	0	0	0	0	0	0
13. NAIC 6 .....	0	0	0	0	0	0	0	0
14. Total Preferred Stock	0	0	0	0	0	0	0	0
15. Total Bonds and Preferred Stock	7,544,220	3,731,835	3,715,911	(2,011)	7,558,133	0	0	7,544,220

(a) Book/Adjusted Carrying Value column for the end of the current reporting period includes the following amount of short-term and cash equivalent bonds by NAIC designation:

NAIC 1 \$ 3,529,108 ; NAIC 2 \$ 0 ; NAIC 3 \$ 0 ; NAIC 4 \$ 0 ; NAIC 5 \$ 0 ; NAIC 6 \$ 0

S102

**SCHEDULE DA - PART 1**

Short-Term Investments

	1	2	3	4	5
	Book/Adjusted Carrying Value	Premium	Actual Cost	Interest Collected Year-to-Date	Paid for Accrued Interest Year-to-Date
7709999999 Totals		XX			

**NONE**

**SCHEDULE DA - VERIFICATION**

Short-Term Investments

	1	2
	Year To Date	Prior Year Ended December 31
1. Book/adjusted carrying value, December 31 of prior year .....	0	
2. Cost of short-term investments acquired .....	0	2,344,927
3. Accrual of discount .....	0	69
4. Unrealized valuation increase (decrease) .....	0	
5. Total gain (loss) on disposals .....	0	(3)
6. Deduct consideration received on disposals .....	0	2,344,993
7. Deduct amortization of premium .....	0	
8. Total foreign exchange change in book/adjusted carrying value .....	0	
9. Deduct current year's other than temporary impairment recognized .....	0	
10. Book/adjusted carrying value at end of current period (Lines 1+2+3+4+5-6-7+8-9) .....	0	0
11. Deduct total nonadmitted amounts .....	0	
12. Statement value at end of current period (Line 10 minus Line 11)	0	0

Schedule DB - Part A - Verification - Options, Caps, Floors, Collars, Swaps and Forwards

**N O N E**

Schedule DB - Part B - Verification - Futures Contracts

**N O N E**

Schedule DB - Part C - Section 1 - Replication (Synthetic Asset) Transactions (RSATs) Open

**N O N E**

Schedule DB-Part C-Section 2-Reconciliation of Replication (Synthetic Asset) Transactions Open

**N O N E**

Schedule DB - Verification - Book/Adjusted Carrying Value, Fair Value and Potential Exposure of  
Derivatives

**N O N E**

STATEMENT AS OF MARCH 31, 2022 OF THE SilverScript Insurance Company

**SCHEDULE E - PART 2 - VERIFICATION**

(Cash Equivalents)

	1	2
	Year To Date	Prior Year Ended December 31
1. Book/adjusted carrying value, December 31 of prior year .....	325,323,875	231,619,886
2. Cost of cash equivalents acquired .....	566,946,857	2,891,668,542
3. Accrual of discount .....	1,363	1,289
4. Unrealized valuation increase (decrease) .....	0	
5. Total gain (loss) on disposals .....	43	
6. Deduct consideration received on disposals .....	295,566,464	2,797,965,842
7. Deduct amortization of premium .....	0	
8. Total foreign exchange change in book/adjusted carrying value .....	0	
9. Deduct current year's other than temporary impairment recognized .....	0	
10. Book/adjusted carrying value at end of current period (Lines 1+2+3+4+5-6-7+8-9) .....	596,705,674	325,323,875
11. Deduct total nonadmitted amounts .....	0	
12. Statement value at end of current period (Line 10 minus Line 11)	596,705,674	325,323,875

Schedule A - Part 2 - Real Estate Acquired and Additions Made

**N O N E**

Schedule A - Part 3 - Real Estate Disposed

**N O N E**

Schedule B - Part 2 - Mortgage Loans Acquired and Additions Made

**N O N E**

Schedule B - Part 3 - Mortgage Loans Disposed, Transferred or Repaid

**N O N E**

Schedule BA - Part 2 - Other Long-Term Invested Assets Acquired and Additions Made

**N O N E**

Schedule BA - Part 3 - Other Long-Term Invested Assets Disposed, Transferred or Repaid

**N O N E**

STATEMENT AS OF MARCH 31, 2022 OF THE SilverScript Insurance Company

**SCHEDULE D - PART 3**

Show All Long-Term Bonds and Stock Acquired During the Current Quarter

1	2	3	4	5	6	7	8	9	10
CUSIP Identification	Description	Foreign	Date Acquired	Name of Vendor	Number of Shares of Stock	Actual Cost	Par Value	Paid for Accrued Interest and Dividends	NAIC Designation, NAIC Designation Modifier and SVO Administrative Symbol
912828-27-8	US TREASURY NOTE/BOND 1.500% 01/31/27		02/14/2022	Strategas Securities, LLC		98,027	100,000	62	1.A
91282C-DN-8	US TREASURY NOTE/BOND 1.000% 12/15/24		01/10/2022	Strategas Securities, LLC		19,891	20,000	15	1.A
0109999999. Subtotal - Bonds - U.S. Governments						117,918	120,000	77	XXX
2509999997. Total - Bonds - Part 3						117,918	120,000	77	XXX
2509999998. Total - Bonds - Part 5						XXX	XXX	XXX	XXX
2509999999. Total - Bonds						117,918	120,000	77	XXX
4509999997. Total - Preferred Stocks - Part 3						0	XXX	0	XXX
4509999998. Total - Preferred Stocks - Part 5						XXX	XXX	XXX	XXX
4509999999. Total - Preferred Stocks						0	XXX	0	XXX
5989999997. Total - Common Stocks - Part 3						0	XXX	0	XXX
5989999998. Total - Common Stocks - Part 5						XXX	XXX	XXX	XXX
5989999999. Total - Common Stocks						0	XXX	0	XXX
5999999999. Total - Preferred and Common Stocks						0	XXX	0	XXX
6009999999 - Totals						117,918	XXX	77	XXX

Schedule D - Part 4 - Long-Term Bonds and Stocks Sold, Redeemed or Otherwise Disposed Of

**N O N E**

Schedule DB - Part A - Section 1 - Options, Caps, Floors, Collars, Swaps and Forwards Open

**N O N E**

Schedule DB - Part B - Section 1 - Futures Contracts Open

**N O N E**

Schedule DB - Part B - Section 1B - Brokers with whom cash deposits have been made

**N O N E**

Schedule DB - Part D - Section 1 - Counterparty Exposure for Derivative Instruments Open

**N O N E**

Schedule DB - Part D-Section 2 - Collateral for Derivative Instruments Open - Pledged By

**N O N E**

Schedule DB - Part D-Section 2 - Collateral for Derivative Instruments Open - Pledged To

**N O N E**

Schedule DB - Part E - Derivatives Hedging Variable Annuity Guarantees

**N O N E**

Schedule DL - Part 1 - Reinvested Collateral Assets Owned

**N O N E**

Schedule DL - Part 2 - Reinvested Collateral Assets Owned

**N O N E**







SUPPLEMENT FOR THE QUARTER ENDING MARCH 31, 2022 OF THE SilverScript Insurance Company

## MEDICARE PART D COVERAGE SUPPLEMENT

(Net of Reinsurance)

NAIC Group Code 0001

NAIC Company Code 12575

	Individual Coverage		Group Coverage		5 Total Cash
	1 Insured	2 Uninsured	3 Insured	4 Uninsured	
1. Premiums Collected .....	408,592,744	XXX	22,447,619	XXX	431,040,363
2. Earned Premiums .....	503,347,395	XXX	19,992,753	XXX	XXX
3. Claims Paid .....	600,076,629	XXX	30,968,690	XXX	631,045,319
4. Claims Incurred .....	499,581,375	XXX	28,845,644	XXX	XXX
5. Reinsurance Coverage and Low Income Cost Sharing - Claims Paid Net of Reimbursements Applied (a) .....	XXX	(970,026,318)	XXX	(200,752,372)	(1,170,778,690)
6. Aggregate Policy Reserves - Change .....		XXX		XXX	XXX
7. Expenses Paid .....	120,201,421	XXX	4,774,351	XXX	124,975,772
8. Expenses Incurred .....	74,559,400	XXX	2,961,469	XXX	XXX
9. Underwriting Gain or Loss .....	(70,793,380)	XXX	(11,814,360)	XXX	XXX
10. Cash Flow Result .....	XXX	XXX	XXX	XXX	845,797,962

(a) Uninsured Receivable/Payable with CMS at End of Quarter: \$ .....1,126,710,178 due from CMS or \$ .....925,420,286 due to CMS