



HEALTH QUARTERLY STATEMENT

AS OF SEPTEMBER 30, 2022
OF THE CONDITION AND AFFAIRS OF THE
HMO Partners, Inc

NAIC Group Code 0876 0876 NAIC Company Code 95442 Employer's ID Number 71-0747497
(Current) (Prior)

Organized under the Laws of Arkansas, State of Domicile or Port of Entry AR

Country of Domicile United States of America

Licensed as business type: Health Maintenance Organization

Is HMO Federally Qualified? Yes [] No []

Incorporated/Organized 11/08/1993 Commenced Business 01/01/1994

Statutory Home Office 601 S. Gaines, Little Rock, AR, US 72201
(Street and Number) (City or Town, State, Country and Zip Code)

Main Administrative Office 601 S. Gaines
(Street and Number)
Little Rock, AR, US 72201, 501-378-2000
(City or Town, State, Country and Zip Code) (Area Code) (Telephone Number)

Mail Address 601 S. Gaines, Little Rock, AR, US 72201
(Street and Number or P.O. Box) (City or Town, State, Country and Zip Code)

Primary Location of Books and Records 601 S. Gaines
(Street and Number)
Little Rock, AR, US 72201, 501-378-2000
(City or Town, State, Country and Zip Code) (Area Code) (Telephone Number)

Internet Website Address healthadvantage-hmo.com

Statutory Statement Contact Samuel Patterson Wenger, 501-399-3953
(Name) (Area Code) (Telephone Number)
SPWenger@arkbluecross.com, 501-378-3258
(E-mail Address) (FAX Number)

OFFICERS

Chairman of the Board Gray Donald Dillard Secretary Timothy Gerard Gauger
Treasurer Scott Bradley Winter President / CEO Matthew Dennis Vannatta #

OTHER

Brent William Beaulieu, Vice Chairman

DIRECTORS OR TRUSTEES

<u>Curtis Edwin Barnett</u>	<u>Brent William Beaulieu</u>	<u>Alicia Marie Berkemeyer</u>
<u>Gray Donald Dillard</u>	<u>Lavanda Moore Gangluff APN</u>	<u>Richard Loyd Gore DDS</u>
<u>Christina Powell Hockaday</u>	<u>Matthew Ridgway Jones</u>	<u>Calvin Eugene Kellogg</u>
<u>Charles Edgar Phillips MD</u>	<u>Tonya Renee Robertson</u>	<u>Sherman Ellis Tate</u>
<u>Matthew Dennis Vannatta #</u>	<u>Troy Russell Wells</u>	

State of Arkansas SS:
County of Pulaski

The officers of this reporting entity being duly sworn, each depose and say that they are the described officers of said reporting entity, and that on the reporting period stated above, all of the herein described assets were the absolute property of the said reporting entity, free and clear from any liens or claims thereon, except as herein stated, and that this statement, together with related exhibits, schedules and explanations therein contained, annexed or referred to, is a full and true statement of all the assets and liabilities and of the condition and affairs of the said reporting entity as of the reporting period stated above, and of its income and deductions therefrom for the period ended, and have been completed in accordance with the NAIC Annual Statement Instructions and Accounting Practices and Procedures manual except to the extent that: (1) state law may differ; or, (2) that state rules or regulations require differences in reporting not related to accounting practices and procedures, according to the best of their information, knowledge and belief, respectively. Furthermore, the scope of this attestation by the described officers also includes the related corresponding electronic filing with the NAIC, when required, that is an exact copy (except for formatting differences due to electronic filing) of the enclosed statement. The electronic filing may be requested by various regulators in lieu of or in addition to the enclosed statement.

Gray Donald Dillard
Chairman of the Board

Scott Bradley Winter
Treasurer

Timothy Gerard Gauger
Secretary

Subscribed and sworn to before me this _____ day of _____

- a. Is this an original filing? Yes [] No []
- b. If no,
1. State the amendment number.....
 2. Date filed
 3. Number of pages attached.....

STATEMENT AS OF SEPTEMBER 30, 2022 OF THE HMO Partners, Inc

ASSETS

	Current Statement Date			4 December 31 Prior Year Net Admitted Assets
	1 Assets	2 Nonadmitted Assets	3 Net Admitted Assets (Cols. 1 - 2)	
1. Bonds	51,838,532		51,838,532	50,018,154
2. Stocks:				
2.1 Preferred stocks			0	0
2.2 Common stocks	8,227,996	833,261	7,394,735	6,310,219
3. Mortgage loans on real estate:				
3.1 First liens			0	0
3.2 Other than first liens.....			0	0
4. Real estate:				
4.1 Properties occupied by the company (less \$ encumbrances)			0	0
4.2 Properties held for the production of income (less \$ encumbrances)			0	0
4.3 Properties held for sale (less \$ encumbrances)			0	0
5. Cash (\$38,403,617), cash equivalents (\$1,526,581) and short-term investments (\$0)	39,930,198		39,930,198	35,965,634
6. Contract loans (including \$ premium notes)			0	0
7. Derivatives			0	0
8. Other invested assets	10,946,479	334,764	10,611,715	9,688,994
9. Receivables for securities			0	0
10. Securities lending reinvested collateral assets			0	0
11. Aggregate write-ins for invested assets	0	0	0	0
12. Subtotals, cash and invested assets (Lines 1 to 11)	110,943,205	1,168,025	109,775,180	101,983,000
13. Title plants less \$ charged off (for Title insurers only)			0	0
14. Investment income due and accrued	348,910		348,910	338,095
15. Premiums and considerations:				
15.1 Uncollected premiums and agents' balances in the course of collection			0	0
15.2 Deferred premiums, agents' balances and installments booked but deferred and not yet due (including \$ earned but unbilled premiums)			0	0
15.3 Accrued retrospective premiums (\$1,630,983) and contracts subject to redetermination (\$2,031,463)	4,972,502	1,310,056	3,662,446	4,143,238
16. Reinsurance:				
16.1 Amounts recoverable from reinsurers	8,541,920		8,541,920	0
16.2 Funds held by or deposited with reinsured companies			0	0
16.3 Other amounts receivable under reinsurance contracts			0	0
17. Amounts receivable relating to uninsured plans	9,305,362	615,795	8,689,567	4,825,590
18.1 Current federal and foreign income tax recoverable and interest thereon	5,813,018		5,813,018	2,113,018
18.2 Net deferred tax asset			0	0
19. Guaranty funds receivable or on deposit			0	0
20. Electronic data processing equipment and software			0	0
21. Furniture and equipment, including health care delivery assets (\$)			0	0
22. Net adjustment in assets and liabilities due to foreign exchange rates			0	0
23. Receivables from parent, subsidiaries and affiliates	311,129		311,129	896,560
24. Health care (\$8,453,328) and other amounts receivable	11,628,806	3,095,914	8,532,892	8,094,912
25. Aggregate write-ins for other than invested assets	518,596	350,000	168,596	195,493
26. Total assets excluding Separate Accounts, Segregated Accounts and Protected Cell Accounts (Lines 12 to 25)	152,383,448	6,539,790	145,843,658	122,589,906
27. From Separate Accounts, Segregated Accounts and Protected Cell Accounts			0	0
28. Total (Lines 26 and 27)	152,383,448	6,539,790	145,843,658	122,589,906
DETAILS OF WRITE-INS				
1101. Note Receivable			0	0
1102.				
1103.				
1198. Summary of remaining write-ins for Line 11 from overflow page	0	0	0	0
1199. Totals (Lines 1101 through 1103 plus 1198)(Line 11 above)	0	0	0	0
2501. Supplemental Savings Plan	78,753		78,753	85,592
2502. Other Assets	439,843	350,000	89,843	109,901
2503.				
2598. Summary of remaining write-ins for Line 25 from overflow page	0	0	0	0
2599. Totals (Lines 2501 through 2503 plus 2598)(Line 25 above)	518,596	350,000	168,596	195,493

STATEMENT AS OF SEPTEMBER 30, 2022 OF THE HMO Partners, Inc

LIABILITIES, CAPITAL AND SURPLUS

	Current Period			Prior Year
	1 Covered	2 Uncovered	3 Total	4 Total
1. Claims unpaid (less \$19,793,735 reinsurance ceded)	23,484,320		23,484,320	26,435,120
2. Accrued medical incentive pool and bonus amounts	3,939,627		3,939,627	3,760,090
3. Unpaid claims adjustment expenses	787,438		787,438	1,018,064
4. Aggregate health policy reserves, including the liability of \$0 for medical loss ratio rebate per the Public Health Service Act	15,559,780		15,559,780	6,530,839
5. Aggregate life policy reserves			0	0
6. Property/casualty unearned premium reserve			0	0
7. Aggregate health claim reserves			0	0
8. Premiums received in advance	5,339,773		5,339,773	3,737,596
9. General expenses due or accrued	5,686,847		5,686,847	5,015,985
10.1 Current federal and foreign income tax payable and interest thereon (including \$ on realized gains (losses))	2,111,001		2,111,001	0
10.2 Net deferred tax liability			0	0
11. Ceded reinsurance premiums payable	6,858,292		6,858,292	77,615
12. Amounts withheld or retained for the account of others	254,232		254,232	436,209
13. Remittances and items not allocated	799,597		799,597	362,931
14. Borrowed money (including \$ current) and interest thereon \$ (including \$ current)			0	0
15. Amounts due to parent, subsidiaries and affiliates	9,419,228		9,419,228	11,219,452
16. Derivatives			0	0
17. Payable for securities			0	0
18. Payable for securities lending			0	0
19. Funds held under reinsurance treaties (with \$ authorized reinsurers, \$ unauthorized reinsurers and \$ certified reinsurers)			0	0
20. Reinsurance in unauthorized and certified (\$) companies			0	0
21. Net adjustments in assets and liabilities due to foreign exchange rates			0	0
22. Liability for amounts held under uninsured plans	15,933,114		15,933,114	19,023,859
23. Aggregate write-ins for other liabilities (including \$ current)	0	0	0	0
24. Total liabilities (Lines 1 to 23)	90,173,249	0	90,173,249	77,617,760
25. Aggregate write-ins for special surplus funds	XXX	XXX	0	0
26. Common capital stock	XXX	XXX	10,000	10,000
27. Preferred capital stock	XXX	XXX		
28. Gross paid in and contributed surplus	XXX	XXX	1,919,153	1,919,153
29. Surplus notes	XXX	XXX		
30. Aggregate write-ins for other than special surplus funds	XXX	XXX	0	0
31. Unassigned funds (surplus)	XXX	XXX	53,741,258	43,043,002
32. Less treasury stock, at cost:				
32.1 shares common (value included in Line 26 \$)	XXX	XXX		
32.2 shares preferred (value included in Line 27 \$)	XXX	XXX		
33. Total capital and surplus (Lines 25 to 31 minus Line 32)	XXX	XXX	55,670,411	44,972,155
34. Total liabilities, capital and surplus (Lines 24 and 33)	XXX	XXX	145,843,660	122,589,915
DETAILS OF WRITE-INS				
2301.				
2302.				
2303.				
2398. Summary of remaining write-ins for Line 23 from overflow page	0	0	0	0
2399. Totals (Lines 2301 through 2303 plus 2398)(Line 23 above)	0	0	0	0
2501.	XXX	XXX		0
2502.	XXX	XXX		
2503.	XXX	XXX		
2598. Summary of remaining write-ins for Line 25 from overflow page	XXX	XXX	0	0
2599. Totals (Lines 2501 through 2503 plus 2598)(Line 25 above)	XXX	XXX	0	0
3001.	XXX	XXX		
3002.	XXX	XXX		
3003.	XXX	XXX		
3098. Summary of remaining write-ins for Line 30 from overflow page	XXX	XXX	0	0
3099. Totals (Lines 3001 through 3003 plus 3098)(Line 30 above)	XXX	XXX	0	0

STATEMENT OF REVENUE AND EXPENSES

	Current Year To Date		Prior Year To Date	Prior Year Ended December 31
	1 Uncovered	2 Total	3 Total	4 Total
1. Member Months	XXX	332,235	351,882	478,285
2. Net premium income (including \$ non-health premium income)	XXX	143,009,504	150,025,044	203,004,531
3. Change in unearned premium reserves and reserve for rate credits	XXX			
4. Fee-for-service (net of \$ medical expenses)	XXX			
5. Risk revenue	XXX			
6. Aggregate write-ins for other health care related revenues	XXX	0	0	0
7. Aggregate write-ins for other non-health revenues	XXX	0	0	0
8. Total revenues (Lines 2 to 7)	XXX	143,009,504	150,025,044	203,004,531
Hospital and Medical:				
9. Hospital/medical benefits		101,171,438	128,186,864	180,420,839
10. Other professional services		63,241	15,774	46,931
11. Outside referrals		5,694,347	2,916,494	4,670,057
12. Emergency room and out-of-area		34,816,932	31,719,509	44,056,947
13. Prescription drugs		48,928,129	48,094,384	66,533,919
14. Aggregate write-ins for other hospital and medical	0	0	0	0
15. Incentive pool, withhold adjustments and bonus amounts		1,936,714	2,598,008	3,196,754
16. Subtotal (Lines 9 to 15)	0	192,610,801	213,531,033	298,925,447
Less:				
17. Net reinsurance recoveries		81,330,643	78,118,208	114,849,309
18. Total hospital and medical (Lines 16 minus 17)	0	111,280,158	135,412,825	184,076,138
19. Non-health claims (net)				
20. Claims adjustment expenses, including \$ 5,613,776 cost containment expenses		5,739,419	8,738,436	10,447,868
21. General administrative expenses		16,346,109	17,403,529	29,755,969
22. Increase in reserves for life and accident and health contracts (including \$ increase in reserves for life only)				0
23. Total underwriting deductions (Lines 18 through 22)	0	133,365,686	161,554,790	224,279,975
24. Net underwriting gain or (loss) (Lines 8 minus 23)	XXX	9,643,818	(11,529,746)	(21,275,444)
25. Net investment income earned		1,306,012	1,382,826	1,647,148
26. Net realized capital gains (losses) less capital gains tax of \$		(134,501)	522,389	710,050
27. Net investment gains (losses) (Lines 25 plus 26)	0	1,171,511	1,905,215	2,357,198
28. Net gain or (loss) from agents' or premium balances charged off [(amount recovered \$) (amount charged off \$)]				
29. Aggregate write-ins for other income or expenses	0	184,184	164,997	(60,328)
30. Net income or (loss) after capital gains tax and before all other federal income taxes (Lines 24 plus 27 plus 28 plus 29)	XXX	10,999,513	(9,459,534)	(18,978,574)
31. Federal and foreign income taxes incurred	XXX	2,111,001	(2,060,579)	(2,223,554)
32. Net income (loss) (Lines 30 minus 31)	XXX	8,888,512	(7,398,955)	(16,755,020)
DETAILS OF WRITE-INS				
0601.	XXX			
0602.	XXX			
0603.	XXX			
0698. Summary of remaining write-ins for Line 6 from overflow page	XXX	0	0	0
0699. Totals (Lines 0601 through 0603 plus 0698)(Line 6 above)	XXX	0	0	0
0701.	XXX			
0702.	XXX			
0703.	XXX			
0798. Summary of remaining write-ins for Line 7 from overflow page	XXX	0	0	0
0799. Totals (Lines 0701 through 0703 plus 0798)(Line 7 above)	XXX	0	0	0
1401.				
1402.				
1403.				
1498. Summary of remaining write-ins for Line 14 from overflow page	0	0	0	0
1499. Totals (Lines 1401 through 1403 plus 1498)(Line 14 above)	0	0	0	0
2901. Licensing fee income		160,000	160,000	160,000
2902. Miscellaneous Income/Loss				(220,328)
2903. Miscellaneous Income		24,184	4,997	
2998. Summary of remaining write-ins for Line 29 from overflow page	0	0	0	0
2999. Totals (Lines 2901 through 2903 plus 2998)(Line 29 above)	0	184,184	164,997	(60,328)

STATEMENT OF REVENUE AND EXPENSES (Continued)

	1 Current Year to Date	2 Prior Year to Date	3 Prior Year Ended December 31
CAPITAL AND SURPLUS ACCOUNT			
33. Capital and surplus prior reporting year.....	44,972,088	64,210,279	64,210,279
34. Net income or (loss) from Line 32.....	8,888,512	(7,398,955)	(16,755,020)
35. Change in valuation basis of aggregate policy and claim reserves.....			
36. Change in net unrealized capital gains (losses) less capital gains tax of \$.....	(3,347,651)	1,510,502	3,049,081
37. Change in net unrealized foreign exchange capital gain or (loss).....			
38. Change in net deferred income tax.....	(8,375)	(473,248)	(2,920,969)
39. Change in nonadmitted assets.....	5,165,770	1,013,590	(2,611,283)
40. Change in unauthorized and certified reinsurance.....	0	0	0
41. Change in treasury stock.....	0	0	0
42. Change in surplus notes.....	0	0	0
43. Cumulative effect of changes in accounting principles.....			
44. Capital Changes:			
44.1 Paid in.....			0
44.2 Transferred from surplus (Stock Dividend).....	0	0	0
44.3 Transferred to surplus.....			
45. Surplus adjustments:			
45.1 Paid in.....	0	0	0
45.2 Transferred to capital (Stock Dividend).....			
45.3 Transferred from capital.....			
46. Dividends to stockholders.....			
47. Aggregate write-ins for gains or (losses) in surplus.....	65	0	0
48. Net change in capital & surplus (Lines 34 to 47).....	10,698,321	(5,348,111)	(19,238,191)
49. Capital and surplus end of reporting period (Line 33 plus 48)	55,670,409	58,862,168	44,972,088
DETAILS OF WRITE-INS			
4701. Miscellaneous.....	65		
4702.			
4703.			
4798. Summary of remaining write-ins for Line 47 from overflow page.....	0	0	0
4799. Totals (Lines 4701 through 4703 plus 4798)(Line 47 above)	65	0	0

STATEMENT AS OF SEPTEMBER 30, 2022 OF THE HMO Partners, Inc

CASH FLOW

	1 Current Year To Date	2 Prior Year To Date	3 Prior Year Ended December 31
Cash from Operations			
1. Premiums collected net of reinsurance	159,867,239	153,615,626	212,229,701
2. Net investment income	1,269,301	1,452,718	1,688,021
3. Miscellaneous income	0	0	0
4. Total (Lines 1 to 3)	161,136,541	155,068,344	213,917,722
5. Benefit and loss related payments	121,485,212	124,728,894	179,085,752
6. Net transfers to Separate Accounts, Segregated Accounts and Protected Cell Accounts			
7. Commissions, expenses paid and aggregate write-ins for deductions	29,005,138	25,993,801	26,901,331
8. Dividends paid to policyholders			
9. Federal and foreign income taxes paid (recovered) net of \$ tax on capital gains (losses)	3,708,375	(100,612)	(3,246,614)
10. Total (Lines 5 through 9)	154,198,725	150,622,083	202,740,469
11. Net cash from operations (Line 4 minus Line 10)	6,937,816	4,446,261	11,177,253
Cash from Investments			
12. Proceeds from investments sold, matured or repaid:			
12.1 Bonds	7,992,898	19,318,723	26,214,843
12.2 Stocks	0	2,200,000	1,269,413
12.3 Mortgage loans	0	0	0
12.4 Real estate	0	0	0
12.5 Other invested assets	81,348	1,086,777	1,127,358
12.6 Net gains or (losses) on cash, cash equivalents and short-term investments	0	0	68
12.7 Miscellaneous proceeds	0	400,000	0
12.8 Total investment proceeds (Lines 12.1 to 12.7)	8,074,246	23,005,500	28,611,682
13. Cost of investments acquired (long-term only):			
13.1 Bonds	9,923,494	15,611,995	21,177,257
13.2 Stocks	144,170	156,216	329,705
13.3 Mortgage loans	0	0	0
13.4 Real estate	0	0	0
13.5 Other invested assets	82,785	81,159	127,655
13.6 Miscellaneous applications	0	0	0
13.7 Total investments acquired (Lines 13.1 to 13.6)	10,150,449	15,849,370	21,634,617
14. Net increase (or decrease) in contract loans and premium notes	0	0	0
15. Net cash from investments (Line 12.8 minus Line 13.7 and Line 14)	(2,076,203)	7,156,130	6,977,064
Cash from Financing and Miscellaneous Sources			
16. Cash provided (applied):			
16.1 Surplus notes, capital notes	0	0	0
16.2 Capital and paid in surplus, less treasury stock	0	0	0
16.3 Borrowed funds	0	0	0
16.4 Net deposits on deposit-type contracts and other insurance liabilities	0	0	0
16.5 Dividends to stockholders	0	0	0
16.6 Other cash provided (applied)	(897,049)	11,399,589	(2,209,691)
17. Net cash from financing and miscellaneous sources (Line 16.1 through Line 16.4 minus Line 16.5 plus Line 16.6)	(897,049)	11,399,589	(2,209,691)
RECONCILIATION OF CASH, CASH EQUIVALENTS AND SHORT-TERM INVESTMENTS			
18. Net change in cash, cash equivalents and short-term investments (Line 11, plus Lines 15 and 17)	3,964,564	23,001,980	15,944,626
19. Cash, cash equivalents and short-term investments:			
19.1 Beginning of year	35,965,634	20,021,008	20,021,008
19.2 End of period (Line 18 plus Line 19.1)	39,930,198	43,022,988	35,965,634

Note: Supplemental disclosures of cash flow information for non-cash transactions:

--	--	--	--

STATEMENT AS OF SEPTEMBER 30, 2022 OF THE HMO Partners, Inc

EXHIBIT OF PREMIUMS, ENROLLMENT AND UTILIZATION

	1 Total	Comprehensive (Hospital & Medical)		4 Medicare Supplement	5 Vision Only	6 Dental Only	7 Federal Employees Health Benefit Plan	8 Title XVIII Medicare	9 Title XIX Medicaid	10 Other
		2 Individual	3 Group							
Total Members at end of:										
1. Prior Year	75,606	29,965	41,922	0	0	0	0	3,719	0	0
2. First Quarter	68,885	29,937	36,131	0	0	0	0	2,817	0	0
3. Second Quarter	68,763	31,487	34,554	0	0	0	0	2,722	0	0
4. Third Quarter	68,090	32,587	32,850					2,653		
5. Current Year	0									
6. Current Year Member Months	618,620	278,556	315,220					24,844		
Total Member Ambulatory Encounters for Period:										
7. Physician	63,401	38,400	20,176					4,825		
8. Non-Physician	74,509	44,117	28,888					1,504		
9. Total	137,910	82,517	49,064	0	0	0	0	6,329	0	0
10. Hospital Patient Days Incurred	17,808	12,136	3,917					1,755		
11. Number of Inpatient Admissions	3,684	2,415	897					372		
12. Health Premiums Written (a)	261,406,816	103,637,180	136,158,746					21,610,890		
13. Life Premiums Direct	0									
14. Property/Casualty Premiums Written	0									
15. Health Premiums Earned	261,406,816	103,637,180	136,158,746					21,610,890		
16. Property/Casualty Premiums Earned	0									
17. Amount Paid for Provision of Health Care Services.....	193,211,023	60,565,690	113,523,258					19,122,075		
18. Amount Incurred for Provision of Health Care Services	192,610,801	70,201,747	105,826,077					16,582,977		

(a) For health premiums written: amount of Medicare Title XVIII exempt from state taxes or fees \$21,610,890

UNDERWRITING AND INVESTMENT EXHIBIT

ANALYSIS OF CLAIMS UNPAID - PRIOR YEAR - NET OF REINSURANCE

Line of Business	Claims Paid Year to Date		Liability End of Current Quarter		5 Claims Incurred in Prior Years (Columns 1 + 3)	6 Estimated Claim Reserve and Claim Liability December 31 of Prior Year
	1 On Claims Incurred Prior to January 1 of Current Year	2 On Claims Incurred During the Year	3 On Claims Unpaid Dec. 31 of Prior Year	4 On Claims Incurred During the Year		
1. Comprehensive (hospital and medical)	22,557,724	83,507,962	(1,040,183)	22,565,739	21,517,541	23,324,863
2. Medicare Supplement					0	0
3. Dental Only					0	0
4. Vision Only					0	0
5. Federal Employees Health Benefits Plan					0	0
6. Title XVIII - Medicare	1,950,324	14,755,658	100,208	1,858,549	2,050,532	3,110,250
7. Title XIX - Medicaid					0	0
8. Other health					0	0
9. Health subtotal (Lines 1 to 8)	24,508,048	98,263,620	(939,975)	24,424,288	23,568,073	26,435,113
10. Healthcare receivables (a)		10,477,424			0	0
11. Other non-health					0	0
12. Medical incentive pools and bonus amounts	118,290	1,638,887	3,264,957	674,670	3,383,247	3,760,089
13. Totals (Lines 9-10+11+12)	24,626,338	89,425,083	2,324,982	25,098,958	26,951,320	30,195,202

(a) Excludes \$ loans or advances to providers not yet expensed.

NOTES TO FINANCIAL STATEMENTS

NOTE 1 Summary of Significant Accounting Policies and Going Concern
A. Accounting Practices

The financial statements of HMO Partners, Inc. are presented on the basis of accounting practices prescribed or permitted by the Arkansas Insurance Department.

The Arkansas Insurance Department recognizes only statutory accounting practices prescribed or permitted by the State of Arkansas for determining and reporting the financial condition and results of operations of an insurance company, for determining its solvency under Arkansas Law. The National Association of Insurance Commissioners' (NAIC) Accounting Practices and Procedures Manual, version effective January 1, 2001, (NAIC SAP) has been adopted as a component of prescribed or permitted practices by the Arkansas Insurance Department.

	SSAP #	F/S Page	F/S Line #	2022	2021
NET INCOME					
(1) State basis (Page 4, Line 32, Columns 2 & 4)	XXX	XXX	XXX	\$ 8,888,512	\$ (16,755,020)
(2) State Prescribed Practices that are an increase/ (decrease) from NAIC SAP:					
(3) State Permitted Practices that are an increase/(decrease) from NAIC SAP:					
(4) NAIC SAP (1-2-3=4)	XXX	XXX	XXX	\$ 8,888,512	\$ (16,755,020)
SURPLUS					
(5) State basis (Page 3, Line 33, Columns 3 & 4)	XXX	XXX	XXX	\$ 55,670,411	\$ 44,972,155
(6) State Prescribed Practices that are an increase/(decrease) from NAIC SAP:					
(7) State Permitted Practices that are an increase/(decrease) from NAIC SAP:					
(8) NAIC SAP (5-6-7=8)	XXX	XXX	XXX	\$ 55,670,411	\$ 44,972,155

B. Use of Estimates in the Preparation of the Financial Statements

The preparation of financial statements in conformity with Statutory Accounting Principles requires management to make estimates and assumptions that affect the reported amounts of assets and liabilities. It also requires disclosure of contingent assets and liabilities at the date of the financial statements and the reported amounts of revenue and expenses during the period. Actual results could differ from those estimates.

C. Accounting Policy

Health premiums are earned ratably over the terms of the related insurance contracts or policies. Expenses incurred in connection with acquiring new insurance business are charged to operations as incurred.

- (1) **Basis for Short-Term Investments**
Short-term investments are stated at amortized cost.
- (2) **Basis for Bonds, Mandatory Convertible Securities, SVO-Identified Investments and Amortization Method**
Bonds not backed by other loans are stated at amortized cost using the interest method.
- (3) **Basis for Common Stocks**
Common Stock is stated at market. The Company does not have investments in stocks of uncombined subsidiaries or affiliates.
- (4) **Basis for Preferred Stocks**
The Company does not have preferred stock.
- (5) **Basis for Mortgage Loans**
The Company is not directly invested in mortgage loans. The Company does own mortgage backed securities.
- (6) **Basis for Loan-Backed Securities and Adjustment Methodology**
Loan-backed securities are stated at either amortized cost or the lower of amortized cost or fair value. The prospective adjustment method is used to value all securities.
- (7) **Accounting Policies for Investments in Subsidiaries, Controlled and Affiliated Entities**
The Company does not have any investments in subsidiaries, controlled or affiliated entities.
- (8) **Accounting Policies for Investments in Joint Ventures, Partnerships and Limited Liability Entities**
The Company does not have any investments in joint ventures, partnerships or limited liability entities.
- (9) **Accounting Policies for Derivatives**
The Company does not have any derivatives.
- (10) **Anticipated Investment Income Used in Premium Deficiency Calculation**
The Company includes anticipated investment income as a factor in the premium deficiency calculation.
- (11) **Management's Policies and Methodologies for Estimating Liabilities for Losses and Loss/Claim Adjustment Expenses**

When setting reserves, the Company employs the 5 methods that are described below. Based on the estimates of these methods and also retrospective considerations, the company sets a best estimate and then an explicit margin is added to ensure that the estimate is sufficient. The average of the methods, as well as the spread of the estimates, is also considered when setting the respective liabilities. Aggregate liabilities are tested against other aggregate estimation methods to check for reasonableness, and any additional margin or adjustments are made.

- (a) **Aggregate Method:** 12 months of paid claims are subtracted from 12 months of estimated incurred claims to get the liability estimate.
- (b) **3 Month Average Method:** For the base liability estimate, the average liability of the third, fourth, and fifth month prior to the current month is used. Adjustments are made for trend, membership change, and backlog to determine the current month's estimate of liability.
- (c) **Previous Year's IBNR Method:** This method is similar to the Three Month Average Method, except that the actual reserve from one year ago is used as the base estimate of liability. This is projected forward using adjustments for trend, membership change, and backlog.

NOTES TO FINANCIAL STATEMENTS

(d) CY Lag Method: This method calculates completion factors by incurral year. Completion factors used for the current year are based on the previous year's experience. Completion factors for the most recent 3 years are set manually.

(e) 12 Month CF Method: This method is identical to the CY Lag Method, except that historical completion factors are based on 12 months of rolling data.

(12) Changes in the Capitalization Policy and Predefined Thresholds from Prior Period
The Company has not modified its capitalization policy from the prior period.

(13) Method Used to Estimate Pharmaceutical Rebate Receivables

Except for Medicare business, pharmacy rebate receivable estimates are based upon the prior quarter's invoiced amounts. For Medicare business, projected Rx rebates are based on the percentage of the year-to-date Rx rebate estimates from the Pharmacy Benefit Manager to year-to-date allowed claims.

D. Going Concern

Management has evaluated the Company's ability to continue as a going concern as of September 30, 2022. Management has concluded that there is not substantial doubt that the Company can continue as a going concern, therefore, there are no policies in place to alleviate such situations.

NOTE 2 Accounting Changes and Corrections of Errors

For the current year's financial statements, the Company has adjusted its reporting of affiliate reinsurance receivables and payables. Prior to 2022, affiliate reinsurance receivables and payables were reported as either a net receivable from parent, subsidiaries, and affiliates on the asset page or as a net payable to parent, subsidiaries, and affiliates on the liabilities page. Going forward, in accordance with SSAP 61, affiliate reinsurance receivables and payables will be reported in their separate classifications on the balance sheet. The 2021 amounts have not been restated as there was no impact to net income or surplus. The balances below represent one month of transactions related to the affiliate reinsurance receivables and payables as of December 31, 2021.

Assets, Line 16.1 Amounts Recoverable from Reinsurers Understated	\$ 10,560,761
Assets, Line 16.3 Other Amounts Receivable Under Reinsurance Contracts Understated	\$ 5,753,465
Assets, Line 17 Amounts Receivable Relating to Uninsured Plans Overstated	\$ (2,221,207)
Liabilities, Line 11 Ceded Reinsurance Premiums Payable Understated	<u>\$ (10,623,032)</u>
Net PSA Payable Understated (Liabilities, Line 15)	<u>\$ 3,469,987</u>

NOTE 3 Business Combinations and Goodwill

Not Applicable.

NOTE 4 Discontinued Operations

Not Applicable.

NOTE 5 Investments

A. Mortgage Loans, including Mezzanine Real Estate Loans

Not Applicable - The Company has no direct investment in mortgage loans at this time.

B. Debt Restructuring

Not Applicable -The Company has no investments in loans or restructured debt at this time.

C. Reverse Mortgages

Not Applicable -The Company has no investments in reverse mortgages at this time.

D. Loan-Backed Securities

(1) Descriptions of sources used to determine prepayment assumptions

For fixed-rate agency mortgage-backed securities, Clearwater Analytics calculates prepayment speeds utilizing Mortgage Industry Advisory Corporation (MIAC) Mortgage Industry Medians (MIMs). MIMs are derived from a semi-monthly dealer-consensus survey of long-term prepayment projections. For other mortgage-backed, loan-backed, and structured securities, Clearwater utilizes prepayment assumptions from Moody's Analytics. Moody's applies a flat economic credit model and utilizes a vector of multiple monthly speeds as opposed to a single speed for more robust projections. In instances where Moody's projections are not available, Clearwater uses data from Reuters, which utilizes the median prepayment speed from contributors' models.

(2) No Other Than Temporary Impairments (OTTI) recognized during 2021 or during the first, second, or third quarters of 2022.

	1 Amortized Cost Basis Before Other-than- Temporary Impairment	2 Other-than- Temporary Impairment Recognized in Loss	3 Fair Value 1 - 2
OTTI recognized 1st Quarter			
a. Intent to sell			\$ -
b. Inability or lack of intent to retain the investment in the security for a period of time sufficient to recover the amortized cost basis			\$ -
c. Total 1st Quarter	\$ -	\$ -	\$ -
OTTI recognized 2nd Quarter			
d. Intent to sell			\$ -
e. Inability or lack of intent to retain the investment in the security for a period of time sufficient to recover the amortized cost basis			\$ -
f. Total 2nd Quarter	\$ -	\$ -	\$ -
OTTI recognized 3rd Quarter			
g. Intent to sell			\$ -
h. Inability or lack of intent to retain the investment in the security for a period of time sufficient to recover the amortized cost basis			\$ -
i. Total 3rd Quarter	\$ -	\$ -	\$ -
OTTI recognized 4th Quarter			
j. Intent to sell			\$ -
k. Inability or lack of intent to retain the investment in the security for a period of time sufficient to recover the amortized cost basis			\$ -
l. Total 4th Quarter	\$ -	\$ -	\$ -
m. Annual Aggregate Total		\$ -	

NOTES TO FINANCIAL STATEMENTS

(3) Recognized OTTI Securities

Not Applicable - No OTTI recognized during 2021 or during the first, second, or third quarters of 2022.

1	2	3	4	5	6	7
CUSIP	Book/Adjusted Carrying Value Amortized Cost Before Current Period OTTI	Present Value of Projected Cash Flows	Recognized Other-Than-Temporary Impairment	Amortized Cost After Other-Than-Temporary Impairment	Fair Value at time of OTTI	Date of Financial Statement Where Reported
Total	XXX	XXX	\$ -	XXX	XXX	XXX

(4) All impaired securities (fair value is less than cost or amortized cost) for which an other-than-temporary impairment has not been recognized in earnings as a realized loss (including securities with a recognized other-than-temporary impairment or non-interest related declines when a non-recognized interest related impairment remains):

a) The aggregate amount of unrealized losses:

1. Less than 12 Months	\$ 1,933,389
2. 12 Months or Longer	\$ 807,322

b) The aggregate related fair value of securities with unrealized losses:

1. Less than 12 Months	\$ 15,493,747
2. 12 Months or Longer	\$ 3,521,116

(5) Information Investor Considered in Reaching Conclusion that Impairments are Not Other-Than-Temporary

Several factors are considered when evaluating holdings for other than temporary impairment. These factors include but are not limited to external credit ratings, length of time of impairment, net present value of future cash flows and percentage of unrealized loss. Each individual holding is evaluated on its own merits. Based on analysis of the fixed income securities that are represented in 4a. and 4b. using the factors identified above it is the Investor's determination that these impairments are temporary. The Investor maintains a watch list of holdings to evaluate for other than temporary impairments and will continue to evaluate underperforming holdings as required on a routine basis.

E. Dollar Repurchase Agreements and/or Securities Lending Transactions

Not Applicable -The Company has no dollar repurchase agreements or security lending transactions at this time. No change from prior year-end 2021.

F. Repurchase Agreements Transactions Accounted for as Secured Borrowing

NONE -The Company has no repurchase agreements at this time. No change from prior year-end 2021.

G. Reverse Repurchase Agreements Transactions Accounted for as Secured Borrowing

NONE -The Company has no reverse repurchase agreements at this time. No change from prior year-end 2021.

H. Repurchase Agreements Transactions Accounted for as a Sale

NONE -The Company has no reverse repurchase agreements at this time. No change from prior year-end 2021.

I. Reverse Repurchase Agreements Transactions Accounted for as a Sale

NONE -The Company has no repurchase agreements or reverse repurchase agreements at this time. No change from prior year-end 2021.

J. Real Estate

Not Applicable - The Company has no investments in real estate at this time. No change from prior year-end 2021.

K. Low Income Housing tax Credits (LIHTC)

Not Applicable -The Company has no investments in low-income housing tax credits (LIHTC) at this time. No change from prior year-end 2021.

L. Restricted Assets

1. Restricted Assets (Including Pledged)

Restricted Asset Category	1	2	3	4	5	6	7
	Total Gross (Admitted & Non-admitted) Restricted from Current Year	Total Gross (Admitted & Non-admitted) Restricted from Prior Year	Increase/ (Decrease) (1 minus 2)	Total Current Year Non-admitted Restricted	Total Current Year Admitted Restricted (1 minus 4)	Gross (Admitted & Non-admitted) Restricted to Total Assets (a)	Admitted Restricted to Total Admitted Assets (b)
a. Subject to contractual obligation for which liability is not shown			\$ -		\$ -	0.000%	0.000%
b. Collateral held under security lending agreements			\$ -		\$ -	0.000%	0.000%
c. Subject to repurchase agreements			\$ -		\$ -	0.000%	0.000%
d. Subject to reverse repurchase agreements			\$ -		\$ -	0.000%	0.000%
e. Subject to dollar repurchase agreements			\$ -		\$ -	0.000%	0.000%
f. Subject to dollar reverse repurchase agreements			\$ -		\$ -	0.000%	0.000%
g. Placed under option contracts			\$ -		\$ -	0.000%	0.000%
h. Letter stock or securities restricted as to sale - excluding FHLB capital stock			\$ -		\$ -	0.000%	0.000%
i. FHLB capital stock			\$ -		\$ -	0.000%	0.000%
j. On deposit with states	\$ 343,744	\$ 349,165	\$ (5,421)		\$ 343,744	0.226%	0.236%
k. On deposit with other regulatory bodies			\$ -		\$ -	0.000%	0.000%
l. Pledged collateral to FHLB (including assets backing funding agreements)			\$ -		\$ -	0.000%	0.000%
m. Pledged as collateral not captured in other categories			\$ -		\$ -	0.000%	0.000%
n. Other restricted assets			\$ -		\$ -	0.000%	0.000%
o. Total Restricted Assets	\$ 343,744	\$ 349,165	\$ (5,421)	\$ -	\$ 343,744	0.226%	0.236%

(a) Column 1 divided by Asset Page, Column 1, Line 28

(b) Column 5 divided by Asset Page, Column 3, Line 28

NOTES TO FINANCIAL STATEMENTS

2. Detail of Assets Pledged as Collateral Not Captured in Other Categories (Contracts That Share Similar Characteristics, Such as Reinsurance and Derivatives, Are Reported in the Aggregate)
Not Applicable
3. Detail of Other Restricted Assets (Contracts That Share Similar Characteristics, Such as Reinsurance and Derivatives, Are Reported in the Aggregate)
Not Applicable
4. Collateral Received and Reflected as Assets Within the Reporting Entity's Financial Statements
Not Applicable
- M. Working Capital Finance Investments
Not Applicable -The Company has no Working Capital Finance Investments (WCFI) at this time. No change from prior year-end 2021.
- N. Offsetting and Netting of Assets and Liabilities
Not Applicable -The Company does not have assets or liabilities with a valid right to offset subject to SSAP No. 64. No change from prior year-end 2021.
- O. 5GI Securities
Not Applicable -The Company does not hold any 5GI securities at this time. No change from prior year-end 2021.

Investment	Number of 5GI Securities		Aggregate BACV		Aggregate Fair Value	
	Current Year	Prior Year	Current Year	Prior Year	Current Year	Prior Year
(1) Bonds - AC						
(2) Bonds - FV						
(3) LB&SS - AC						
(4) LB&SS - FV						
(5) Preferred Stock - AC						
(6) Preferred Stock - FV						
(7) Total (1+2+3+4+5+6)	0	0	\$ -	\$ -	\$ -	\$ -

AC - Amortized Cost FV - Fair Value

- P. Short Sales
Not Applicable -The Company did not have any short sales during the reporting periods.
- Q. Prepayment Penalty and Acceleration Fees

	<u>General Account</u>
1. Number of CUSIPs	2
2. Aggregate Amount of Investment Income	\$ 10,843

- R. Reporting Entity's Share of Cash Pool by Asset Type
Not Applicable -The Company does not participate in a cash pool.

NOTE 6 Joint Ventures, Partnerships and Limited Liability Companies
No significant changes.

NOTE 7 Investment Income
No significant changes.

NOTE 8 Derivative Instruments
Not Applicable - The Company did not have any derivative instruments.

NOTE 9 Income Taxes
No significant changes.

NOTE 10 Information Concerning Parent, Subsidiaries, Affiliates and Other Related Parties
No significant changes.

- A. Nature of the Relationship Involved
The Company was formed on January 1, 1994. The Company's shareholders as of September 30, 2022 and December 31, 2021 were US Able Mutual Insurance Company d/b/a Arkansas Blue Cross and Blue Shield (50%) and Baptist Medical System HMO, Inc. (50%). Effective October 1, 2006, US Able Corporation, a wholly owned subsidiary of Arkansas Blue Cross and Blue Shield (ABCBS), sold its ownership interest in HMO Partners, Inc. to ABCBS for \$27,143,396.

NOTE 11 Debt

- A. Debt Including Capital Notes
As of the year ended December 31, 2021 and quarter ended September 30, 2022, the Company has no capital notes and the Company's liability for borrowed money was zero.
- B. FHLB (Federal Home Loan Bank) Agreements
Not Applicable - As of the year ended December 31, 2021 and the quarter ended September 30, 2022, the Company has no FHLB agreements.

NOTE 12 Retirement Plans, Deferred Compensation, Postemployment Benefits and Compensated Absences and Other Postretirement Benefit Plans

- A. Defined Benefit Plan
Not applicable - The Company does not have a defined benefit plan.
- B. Investment Policies and Strategies
Not applicable - The Company does not have a defined benefit plan.
- C. The fair value of each class of plan assets
Not applicable - The Company does not have a defined benefit plan.
- D. Basis Used to Determine Expected Long-Term Rate-of-Return
Not applicable - The Company does not have a defined benefit plan.
- E. Defined Contribution Plan
No significant changes.
- F. Multiemployer Plans
Not Applicable - The Company does not participate in multiemployer plans.

NOTES TO FINANCIAL STATEMENTS

G. Consolidated/Holding Company Plans
Not Applicable.

H. Postemployment Benefits and Compensated Absences
Not Applicable - The Company does not offer a postretirement benefit plan.

I. Impact of Medicare Modernization Act on Postretirement Benefits (INT 04-17)
Not Applicable.

NOTE 13 Capital and Surplus, Dividend Restrictions and Quasi-Reorganizations
No significant changes.

NOTE 14 Liabilities, Contingencies and Assessments
No significant changes.

NOTE 15 Leases
No significant changes.

NOTE 16 Information About Financial Instruments With Off-Balance Sheet Risk and Financial Instruments With Concentrations of Credit Risk
No significant changes.

NOTE 17 Sale, Transfer and Servicing of Financial Assets and Extinguishments of Liabilities
Not Applicable

A. Transfers of Receivables Reported as Sales
Not Applicable.

B. Transfer and Servicing of Financial Assets
Not Applicable.

C. Wash Sales
Not Applicable.

NOTE 18 Gain or Loss to the Reporting Entity from Uninsured Plans and the Uninsured Portion of Partially Insured Plans

A. ASO Plans:
No significant changes.

B. ASC Plans:
Not Applicable - The Company does not have any Administrative Services Contract (ASC) uninsured plans.

C. Medicare or Similarly Structured Cost Based Reimbursement Contract
Not Applicable

NOTE 19 Direct Premium Written/Produced by Managing General Agents/Third Party Administrators

Not Applicable - The Company does not currently have any direct premium written/produced by managing general agents or third party administrators.

NOTE 20 Fair Value Measurements

A.

(1) Fair Value Measurements at Reporting Date

Description for each class of asset or liability	(Level 1)	(Level 2)	(Level 3)	Net Asset Value (NAV)	Total
a. Assets at fair value					
Cash Equivalent Exempt MMMF		\$ 1,526,580			\$ 1,526,580
Common Stock Mutual Fund		\$ 8,227,996			\$ 8,227,996
Long Term Bonds		\$ 105,271			\$ 105,271
Other Invested Assets				\$ 10,946,479	\$ 10,946,479
Total assets at fair value/NAV	\$ -	\$ 9,859,847	\$ -	\$ 10,946,479	\$ 20,806,326

Description for each class of asset or liability	(Level 1)	(Level 2)	(Level 3)	Net Asset Value (NAV)	Total
b. Liabilities at fair value					
Supplemental Savings Plan	\$ 78,753				\$ 78,753
Total liabilities at fair value	\$ 78,753	\$ -	\$ -	\$ -	\$ 78,753

(2) Fair Value Measurements in (Level 3) of the Fair Value hierarchy

Not Applicable - The Company does not have any assets valued under Level 3 of the Fair Value hierarchy.

(3) Policies when Transfers Between Levels are Recognized

The Company does not have any transfers between levels of fair value measurement.

(4) Description of Valuation Techniques and Inputs Used in Fair Value Measurement

As of September 30, 2022, the reported fair value of the reporting entity's investments in Level 2 include mutual funds with a value of \$9,754,577 and long-term bonds with a combined fair value of \$105,271. Fair value measurements for these securities are provided by the fund and indicate the closing NAV at September 30, 2022. All fair value measurements are provided in US Dollars. There has been no change in this valuation technique.

(5) Fair Value Disclosures

Not Applicable - The Company does not have any derivative assets or liabilities.

B. Fair Value Reporting under SSAP 100 and Other Accounting Pronouncements
Not Applicable

NOTES TO FINANCIAL STATEMENTS

C. Aggregate fair value for all financial instruments and the level within the fair value hierarchy in which the fair value measurements in their entirety fall.

Type of Financial Instrument	Aggregate Fair Value	Admitted Assets	(Level 1)	(Level 2)	(Level 3)	Net Asset Value (NAV)	Not Practicable (Carrying Value)
Exempt MMMF	\$ 1,526,580	\$ 1,526,580		\$ 1,526,580			
Common Stock Mutual F	\$ 8,227,996	\$ 7,394,736		\$ 8,227,996			
Long Term Bonds	\$ 105,271	\$ 105,271		\$ 105,271			
Other Invested Assets	\$ 10,946,479	\$ 10,611,715				\$ 10,946,479	

D. Not Practicable to Estimate Fair Value
Not Applicable.

E. NAV Practical Expedient Investments

1. Martingale Investment Trust – Series 1 Low Volatility Large Cap+

This strategy seeks to meet or exceed equity market returns while realizing significantly less volatility. This investment focuses on identifying and investing in low risk companies with sound fundamental properties. The portfolio is considered to be a low risk portfolio with broad, stable sector diversification. The fund contains 174 individual holdings as of 09/30/2022 with the top 10% of all holdings representing 15.1% of all fund holdings. Overall, the risk target of this portfolio is to perform with 70%-80% of the overall market volatility of the Russell 1000 Index.

The fund is able to be liquidated on a monthly basis. Because the underlying portfolio contains assets that are part of the Russell 1000 Index, it is very probable that the fund would not liquidate at the NAV of a prior month. It is possible the fund could be liquidated at a higher or lower price depending on overall market actions.

Barings U.S. Loan Fund Series – Tranche A

The Barings investment process is a focused and detailed fundamental bottom-up due diligence. The firm's investment philosophy is based on the belief that long-term, risk-adjusted returns can best be achieved through active portfolio management coupled with strong fundamental credit underwriting with the goal of minimizing principal losses. The firm takes a credit-intensive approach when selecting assets that seeks to determine where favorable value exists within companies on a relative basis to other investment alternatives.

The average number of loans in the portfolio is 244 at the end of the 3rd quarter 2022, with 9.96% in the top ten holdings. The portfolio is diversified across ten sectors, with five sectors containing more than 10% of all holdings. Average annualized default since 2011 for the fund is 0.7%, while the historical average of the market is 2.8%.

The fund has daily liquidity but a 30 calendar day prior to withdraw notice is necessary. As of 09/30/22, there are \$0.81 Billion assets in the Commingled Fund.

2. Not Applicable (The investments can be redeemed on a monthly basis.)

3. Not Applicable (There is no required capital commitment for the investments in Martingale or Barings)

4. Redemption of shares of either holding are processed on a monthly basis at prevailing market NAV.

5. Not Applicable

6. Not Applicable (There are no restrictions to viewing the investments of the Martingale Investment Trust – Series 1 Low Volatility Large Cap+ or the Barings U.S. Loan Fund Series – Tranche A. The holdings are provided to the Investor in each of the fund's annual reports, and can be requested at any month end closing.)

7. Not Applicable (The investor has not made a decision to redeem shares of the Martingale Investment Trust – Series 1 Low Volatility Large Cap+ or the Barings U.S. Loan Fund Series – Tranche A at this time.)

NOTE 21 Other Items

No significant changes.

NOTE 22 Events Subsequent

No significant changes.

NOTE 23 Reinsurance

No significant changes.

NOTE 24 Retrospectively Rated Contracts & Contracts Subject to Redetermination

A. Method Used to Estimate Accrued Retrospective Premium Adjustments

The Company estimates accrued retrospective premium adjustments for its health insurance business through a mathematical approach using an algorithm of the Company's underwriting rules and experience rating practices.

B. Retrospective Premiums Recorded Through Written Premium or Adjustment to Earned Premium

The Company records accrued retrospective premium as an adjustment to earned premium.

C. Amount and Percentage of Net Premiums Written Subject to Retrospective Rating Features

The amount of net premiums written by the Company at September 30, 2022 that are subject to retrospective rating features was \$143,009,504 that represented 100% of the total net premium written. No other net premiums written by the Company are subject to retrospective rating features.

D. Medical loss ratio rebates required pursuant to the Public Health Service Act.

	1	2	3	4	5
	Individual	Small Group Employer	Large Group Employer	Other Categories with Rebates	Total
Prior Reporting Year					
(1) Medical loss ratio rebates incurred	\$ -	\$ -	\$ -	\$ -	\$ -
(2) Medical loss ratio rebates paid	\$ -	\$ -	\$ -	\$ -	\$ -
(3) Medical loss ratio rebates unpaid	\$ -	\$ -	\$ -	\$ -	\$ -
(4) Plus reinsurance assumed amounts	XXX	XXX	XXX	XXX	
(5) Less reinsurance ceded amounts	XXX	XXX	XXX	XXX	
(6) Rebates unpaid net of reinsurance	XXX	XXX	XXX	XXX	\$ -
Current Reporting Year-to-Date					
(7) Medical loss ratio rebates incurred	\$ -	\$ -	\$ -	\$ -	\$ -
(8) Medical loss ratio rebates paid					\$ -
(9) Medical loss ratio rebates unpaid					\$ -
(10) Plus reinsurance assumed amounts	XXX	XXX	XXX	XXX	
(11) Less reinsurance ceded amounts	XXX	XXX	XXX	XXX	
(12) Rebates unpaid net of reinsurance	XXX	XXX	XXX	XXX	\$ -

NOTES TO FINANCIAL STATEMENTS

E. Risk Sharing Provisions of the Affordable Care Act

(1) Did the reporting entity write accident and health insurance premium which is subject to the Affordable Care Act risk sharing provisions (YES/NO)?

Yes [X] No []

(2) Impact of Risk Sharing Provisions of the Affordable Care Act on Admitted Assets, Liabilities and Revenue for the Current Year

Amount

a. Permanent ACA Risk Adjustment Program

Assets

1. Premium adjustments receivable due to ACA Risk Adjustment (including high risk pool payments) \$ 854,360

Liabilities

2. Risk adjustment user fees payable for ACA Risk Adjustment \$ -

3. Premium adjustments payable due to ACA Risk Adjustment (including high risk pool premium) \$ 4,363,455

Operations (Revenue & Expense)

4. Reported as revenue in premium for accident and health contracts (written/collected) due to ACA Risk Adjustment \$ (5,068,300)

5. Reported in expenses as ACA risk adjustment user fees (incurred/paid) \$ 29,255

b. Transitional ACA Reinsurance Program

Assets

1. Amounts recoverable for claims paid due to ACA Reinsurance

2. Amounts recoverable for claims unpaid due to ACA Reinsurance (Contra Liability)

3. Amounts receivable relating to uninsured plans for contributions for ACA Reinsurance

Liabilities

4. Liabilities for contributions payable due to ACA Reinsurance – not reported as ceded premium

5. Ceded reinsurance premiums payable due to ACA Reinsurance

6. Liabilities for amounts held under uninsured plans contributions for ACA Reinsurance

Operations (Revenue & Expense)

7. Ceded reinsurance premiums due to ACA Reinsurance

8. Reinsurance recoveries (income statement) due to ACA Reinsurance payments or expected payments

9. ACA Reinsurance contributions – not reported as ceded premium

c. Temporary ACA Risk Corridors Program

Assets

1. Accrued retrospective premium due to ACA Risk Corridors

Liabilities

2. Reserve for rate credits or policy experience rating refunds due to ACA Risk Corridors

Operations (Revenue & Expense)

3. Effect of ACA Risk Corridors on net premium income (paid/received)

4. Effect of ACA Risk Corridors on change in reserves for rate credits

(3) Roll forward of prior year ACA risk sharing provisions for the following asset (gross of any nonadmission) and liability balances along with the reasons for adjustments to prior year balance.

	Accrued During the Prior Year on Business Written Before December 31 of the Prior Year		Received or Paid as of the Current Year on Business Written Before December 31 of the Prior Year		Differences		Adjustments		Unsettled Balances as of the Reporting Date		
	1	2	3	4	Prior Year	Prior Year	To	To	Cumulative	Cumulative	
					Accrued Less Payments (Col 1 - 3)	Accrued Less Payments (Col 2 - 4)					Prior Year Balances
Receivable	Payable	Receivable	Payable	Receivable	Payable	Receivable	Payable	Ref	Receivable	Payable	
a. Permanent ACA Risk Adjustment Program											
1. Premium adjustments receivable (including high risk pool payments)					\$ -	\$ -	\$ 857,927		A	\$ 857,927	\$ -
2. Premium adjustments (payable) (including high risk pool premium)	\$ -	\$ 1,508,657		\$ 3,067,861	\$ -	\$(1,559,204)		\$ 1,559,204	B	\$ -	\$ -
3. Subtotal ACA Permanent Risk Adjustment Program	\$ -	\$ 1,508,657	\$ -	\$ 3,067,861	\$ -	\$(1,559,204)	\$ 857,927	\$ 1,559,204		\$ 857,927	\$ -
b. Transitional ACA Reinsurance Program											
1. Amounts recoverable for claims paid					\$ -	\$ -			C	\$ -	\$ -
2. Amounts recoverable for claims unpaid (contra liability)					\$ -	\$ -			D	\$ -	\$ -
3. Amounts receivable relating to uninsured plans					\$ -	\$ -			E	\$ -	\$ -
4. Liabilities for contributions payable due to ACA Reinsurance - not reported as ceded premium					\$ -	\$ -			F	\$ -	\$ -
5. Ceded reinsurance premiums payable					\$ -	\$ -			G	\$ -	\$ -
6. Liability for amounts held under uninsured plans					\$ -	\$ -			H	\$ -	\$ -
7. Subtotal ACA Transitional Reinsurance Program	\$ -	\$ -	\$ -	\$ -	\$ -	\$ -	\$ -	\$ -		\$ -	\$ -
c. Temporary ACA Risk Corridors Program											
1. Accrued retrospective premium					\$ -	\$ -			I	\$ -	\$ -
2. Reserve for rate credits or policy experience rating refunds					\$ -	\$ -			J	\$ -	\$ -
3. Subtotal ACA Risk Corridors Program	\$ -	\$ -	\$ -	\$ -	\$ -	\$ -	\$ -	\$ -		\$ -	\$ -
d. Total for ACA Risk Sharing Provisions	\$ -	\$ 1,508,657	\$ -	\$ 3,067,861	\$ -	\$(1,559,204)	\$ 857,927	\$ 1,559,204		\$ 857,927	\$ -

NOTES TO FINANCIAL STATEMENTS

Explanations of Adjustments

- A. Adjustment to receivable
- B. Adjustment to payable
- C.
- D.
- E.
- F.
- G.
- H.
- I.
- J.

(4) Roll-Forward of Risk Corridors Asset and Liability Balances by Program Benefit Year

	Accrued During the Prior Year on Business Written Before December 31 of the Prior Year		Received or Paid as of the Current Year on Business Written Before December 31 of the Prior Year		Differences		Adjustments			Unsettled Balances as of the Reporting Date	
	1	2	3	4	Prior Year Accrued Less Payments (Col 1 - 3)	Prior Year Accrued Less Payments (Col 2 - 4)	To Prior Year Balances	To Prior Year Balances	Ref	Cumulative Balance from Prior Years (Col 1-3+7)	Cumulative Balance from Prior Years (Col 2-4+8)
					5	6	7	8		9	10
	Receivable	Payable	Receivable	Payable	Receivable	Payable	Receivable	Payable		Receivable	Payable
a. 2014											
1. Accrued retrospective premium					\$ -	\$ -			A	\$ -	\$ -
2. Reserve for rate credits or policy experience rating refunds					\$ -	\$ -			B	\$ -	\$ -
b. 2015											
1. Accrued retrospective premium					\$ -	\$ -			C	\$ -	\$ -
2. Reserve for rate credits or policy experience rating refunds					\$ -	\$ -			D	\$ -	\$ -
c. 2016											
1. Accrued retrospective premium					\$ -	\$ -			E	\$ -	\$ -
2. Reserve for rate credits or policy experience rating refunds					\$ -	\$ -			F	\$ -	\$ -
d. Total for Risk Corridors	\$ -	\$ -	\$ -	\$ -	\$ -	\$ -	\$ -	\$ -		\$ -	\$ -

Explanations of Adjustments

- A.
- B.
- C.
- D.
- E.
- F.

24E(4)d (Columns 1 through 10) should equal 24E(3)c3 (Column 1 through 10 respectively)

(5) ACA Risk Corridors Receivable as of Reporting Date

Risk Corridors Program Year	1 Estimated Amount to be Filed or Final Amount Filed with CMS	2 Non-Accrued Amounts for Impairment or Other Reasons	3 Amounts received from CMS	4 Asset Balance (Gross of Non-admissions) (1-2-3)	5 Non-admitted Amount	6 Net Admitted Asset (4 - 5)
a. 2014				\$ -		\$ -
b. 2015				\$ -		\$ -
c. 2016				\$ -		\$ -
d. Total (a + b + c)	\$ -	\$ -	\$ -	\$ -	\$ -	\$ -

24E(5)d (Column 4) should equal 24E(3)c1 (Column 9)

24E(5)d (Column 6) should equal 24E(2)c1

NOTES TO FINANCIAL STATEMENTS

NOTE 25 Change in Incurred Claims and Claim Adjustment Expenses**A. Change in Incurred Losses and Loss Adjustment Expenses**

Reserves as of December 31, 2021 were \$ 26,435,113. As of September 30, 2022, \$24,508,048 has been paid for incurred claims and claim adjustment expenses attributable to insured events of prior years. Reserves remaining for prior years are now \$1,927,065 as a result of re-estimation of unpaid claims and claim adjustment expenses. Therefore, there has been a \$2,867,040 favorable prior-year development since December 31, 2021 to September 30, 2022. The increase is generally the result of ongoing analysis of recent loss development trends and cost sharing reductions. Original estimates are increased or decreased, as additional information becomes known regarding individual claims.

12/31/2021 Reserves	\$ 26,435,113
2021 Claims paid in 2022	<u>24,508,048</u>
Adjusted Net Reserves	1,927,065
Less -	
2021 Remaining Reserves	<u>(939,975)</u>
Favorable Development	<u>\$ 2,867,040</u>

B. Information about Significant Changes in Methodologies and Assumptions

There has been no significant change in methodologies and assumptions.

NOTE 26 Intercompany Pooling Arrangements

Not Applicable - The Company does not participate in an intercompany pooling arrangement.

NOTE 27 Structured Settlements

Not Applicable

NOTE 28 Health Care Receivables

No significant changes.

NOTE 29 Participating Policies

Not Applicable - The Company does not have participating contracts.

NOTE 30 Premium Deficiency Reserves

- | | | |
|---|---|-----------------------------|
| 1. Liability carried for premium deficiency reserves | \$ | - |
| 2. Date of the most recent evaluation of this liability | 09/30/2022 | |
| 3. Was anticipated investment income utilized in the calculation? | Yes <input checked="" type="checkbox"/> | No <input type="checkbox"/> |

NOTE 31 Anticipated Salvage and Subrogation

No significant changes.

GENERAL INTERROGATORIES

PART 1 - COMMON INTERROGATORIES

GENERAL

- 1.1 Did the reporting entity experience any material transactions requiring the filing of Disclosure of Material Transactions with the State of Domicile, as required by the Model Act? Yes [] No [X]
- 1.2 If yes, has the report been filed with the domiciliary state? Yes [] No []
- 2.1 Has any change been made during the year of this statement in the charter, by-laws, articles of incorporation, or deed of settlement of the reporting entity? Yes [] No [X]
- 2.2 If yes, date of change:
- 3.1 Is the reporting entity a member of an Insurance Holding Company System consisting of two or more affiliated persons, one or more of which is an insurer? Yes [X] No []
If yes, complete Schedule Y, Parts 1 and 1A.
- 3.2 Have there been any substantial changes in the organizational chart since the prior quarter end? Yes [] No [X]
- 3.3 If the response to 3.2 is yes, provide a brief description of those changes.
- 3.4 Is the reporting entity publicly traded or a member of a publicly traded group? Yes [] No [X]
- 3.5 If the response to 3.4 is yes, provide the CIK (Central Index Key) code issued by the SEC for the entity/group.
- 4.1 Has the reporting entity been a party to a merger or consolidation during the period covered by this statement? Yes [] No [X]
- 4.2 If yes, provide the name of the entity, NAIC Company Code, and state of domicile (use two letter state abbreviation) for any entity that has ceased to exist as a result of the merger or consolidation.

1	2	3
Name of Entity	NAIC Company Code	State of Domicile

5. If the reporting entity is subject to a management agreement, including third-party administrator(s), managing general agent(s), attorney-in-fact, or similar agreement, have there been any significant changes regarding the terms of the agreement or principals involved? Yes [] No [X] N/A []
If yes, attach an explanation.
- 6.1 State as of what date the latest financial examination of the reporting entity was made or is being made. 12/31/2020
- 6.2 State the as of date that the latest financial examination report became available from either the state of domicile or the reporting entity. This date should be the date of the examined balance sheet and not the date the report was completed or released. 12/31/2020
- 6.3 State as of what date the latest financial examination report became available to other states or the public from either the state of domicile or the reporting entity. This is the release date or completion date of the examination report and not the date of the examination (balance sheet date). 07/13/2022
- 6.4 By what department or departments?
Arkansas Insurance Department
- 6.5 Have all financial statement adjustments within the latest financial examination report been accounted for in a subsequent financial statement filed with Departments? Yes [] No [] N/A [X]
- 6.6 Have all of the recommendations within the latest financial examination report been complied with? Yes [] No [] N/A [X]
- 7.1 Has this reporting entity had any Certificates of Authority, licenses or registrations (including corporate registration, if applicable) suspended or revoked by any governmental entity during the reporting period? Yes [] No [X]
- 7.2 If yes, give full information:
- 8.1 Is the company a subsidiary of a bank holding company regulated by the Federal Reserve Board? Yes [] No [X]
- 8.2 If response to 8.1 is yes, please identify the name of the bank holding company.
- 8.3 Is the company affiliated with one or more banks, thrifts or securities firms? Yes [] No [X]
- 8.4 If response to 8.3 is yes, please provide below the names and location (city and state of the main office) of any affiliates regulated by a federal regulatory services agency [i.e. the Federal Reserve Board (FRB), the Office of the Comptroller of the Currency (OCC), the Federal Deposit Insurance Corporation (FDIC) and the Securities Exchange Commission (SEC)] and identify the affiliate's primary federal regulator.

1	2	3	4	5	6
Affiliate Name	Location (City, State)	FRB	OCC	FDIC	SEC

GENERAL INTERROGATORIES

- 9.1 Are the senior officers (principal executive officer, principal financial officer, principal accounting officer or controller, or persons performing similar functions) of the reporting entity subject to a code of ethics, which includes the following standards? Yes No
 (a) Honest and ethical conduct, including the ethical handling of actual or apparent conflicts of interest between personal and professional relationships;
 (b) Full, fair, accurate, timely and understandable disclosure in the periodic reports required to be filed by the reporting entity;
 (c) Compliance with applicable governmental laws, rules and regulations;
 (d) The prompt internal reporting of violations to an appropriate person or persons identified in the code; and
 (e) Accountability for adherence to the code.
- 9.11 If the response to 9.1 is No, please explain:
- 9.2 Has the code of ethics for senior managers been amended? Yes No
- 9.21 If the response to 9.2 is Yes, provide information related to amendment(s).
- 9.3 Have any provisions of the code of ethics been waived for any of the specified officers? Yes No
- 9.31 If the response to 9.3 is Yes, provide the nature of any waiver(s).

FINANCIAL

- 10.1 Does the reporting entity report any amounts due from parent, subsidiaries or affiliates on Page 2 of this statement? Yes No
- 10.2 If yes, indicate any amounts receivable from parent included in the Page 2 amount: \$311,129

INVESTMENT

- 11.1 Were any of the stocks, bonds, or other assets of the reporting entity loaned, placed under option agreement, or otherwise made available for use by another person? (Exclude securities under securities lending agreements.) Yes No
- 11.2 If yes, give full and complete information relating thereto:
12. Amount of real estate and mortgages held in other invested assets in Schedule BA: \$0
13. Amount of real estate and mortgages held in short-term investments: \$0
- 14.1 Does the reporting entity have any investments in parent, subsidiaries and affiliates? Yes No
- 14.2 If yes, please complete the following:
- | | 1
Prior Year-End
Book/Adjusted
Carrying Value | 2
Current Quarter
Book/Adjusted
Carrying Value |
|---|--|---|
| 14.21 Bonds | \$0 | \$0 |
| 14.22 Preferred Stock | \$0 | \$0 |
| 14.23 Common Stock | \$0 | \$0 |
| 14.24 Short-Term Investments | \$0 | \$0 |
| 14.25 Mortgage Loans on Real Estate | \$0 | \$0 |
| 14.26 All Other | \$0 | \$0 |
| 14.27 Total Investment in Parent, Subsidiaries and Affiliates (Subtotal Lines 14.21 to 14.26) | \$0 | \$0 |
| 14.28 Total Investment in Parent included in Lines 14.21 to 14.26 above | \$0 | \$0 |
- 15.1 Has the reporting entity entered into any hedging transactions reported on Schedule DB? Yes No
- 15.2 If yes, has a comprehensive description of the hedging program been made available to the domiciliary state? Yes No N/A
 If no, attach a description with this statement.
16. For the reporting entity's security lending program, state the amount of the following as of the current statement date:
- 16.1 Total fair value of reinvested collateral assets reported on Schedule DL, Parts 1 and 2. \$0
- 16.2 Total book adjusted/carrying value of reinvested collateral assets reported on Schedule DL, Parts 1 and 2. \$0
- 16.3 Total payable for securities lending reported on the liability page. \$0

GENERAL INTERROGATORIES

17. Excluding items in Schedule E - Part 3 - Special Deposits, real estate, mortgage loans and investments held physically in the reporting entity's offices, vaults or safety deposit boxes, were all stocks, bonds and other securities, owned throughout the current year held pursuant to a custodial agreement with a qualified bank or trust company in accordance with Section 1, III - General Examination Considerations, F. Outsourcing of Critical Functions, Custodial or Safekeeping Agreements of the NAIC Financial Condition Examiners Handbook? Yes [] No []
- 17.1 For all agreements that comply with the requirements of the NAIC Financial Condition Examiners Handbook, complete the following:

1 Name of Custodian(s)	2 Custodian Address
US Bank Institutional Trust and Custody	St. Louis, MO

- 17.2 For all agreements that do not comply with the requirements of the NAIC Financial Condition Examiners Handbook, provide the name, location and a complete explanation:

1 Name(s)	2 Location(s)	3 Complete Explanation(s)

- 17.3 Have there been any changes, including name changes, in the custodian(s) identified in 17.1 during the current quarter? Yes [] No []

- 17.4 If yes, give full information relating thereto:

1 Old Custodian	2 New Custodian	3 Date of Change	4 Reason

- 17.5 Investment management – Identify all investment advisors, investment managers, broker/dealers, including individuals that have the authority to make investment decisions on behalf of the reporting entity. For assets that are managed internally by employees of the reporting entity, note as such. ["...that have access to the investment accounts"; "...handle securities"]

1 Name of Firm or Individual	2 Affiliation
Scott B. Winter	I.....
Martingale Asset Management, LP	U.....
Barings, LLC	U.....
Pacific Investment Management Company, LLC	U.....
JP Morgan	U.....

- 17.5097 For those firms/individuals listed in the table for Question 17.5, do any firms/individuals unaffiliated with the reporting entity (i.e. designated with a "U") manage more than 10% of the reporting entity's invested assets? Yes [] No []

- 17.5098 For firms/individuals unaffiliated with the reporting entity (i.e. designated with a "U") listed in the table for Question 17.5, does the total assets under management aggregate to more than 50% of the reporting entity's invested assets? Yes [] No []

- 17.6 For those firms or individuals listed in the table for 17.5 with an affiliation code of "A" (affiliated) or "U" (unaffiliated), provide the information for the table below.

1 Central Registration Depository Number	2 Name of Firm or Individual	3 Legal Entity Identifier (LEI)	4 Registered With	5 Investment Management Agreement (IMA) Filed
108526	Martingale Asset Management, LP	549300GXM5ZGZJXZ1Y74	SEC	NO.....
106006	Barings, LLC	ANDKRHQKPRR64Q2KLR05	SEC, CFTC, NFA	NO.....
104559	Pacific Investment Management Company LLC	549300KGPYQZXGMYYN38	SEC	NO.....
79	JP Morgan	K6Q0W1PS1L1041QL9C32	SEC	NO.....

- 18.1 Have all the filing requirements of the Purposes and Procedures Manual of the NAIC Investment Analysis Office been followed? Yes [] No []

- 18.2 If no, list exceptions:

19. By self-designating 5GI securities, the reporting entity is certifying the following elements for each self-designated 5GI security:
- Documentation necessary to permit a full credit analysis of the security does not exist or an NAIC CRP credit rating for an FE or PL security is not available.
 - Issuer or obligor is current on all contracted interest and principal payments.
 - The insurer has an actual expectation of ultimate payment of all contracted interest and principal.
- Has the reporting entity self-designated 5GI securities? Yes [] No []

20. By self-designating PLGI securities, the reporting entity is certifying the following elements of each self-designated PLGI security:
- The security was purchased prior to January 1, 2018.
 - The reporting entity is holding capital commensurate with the NAIC Designation reported for the security.
 - The NAIC Designation was derived from the credit rating assigned by an NAIC CRP in its legal capacity as a NRSRO which is shown on a current private letter rating held by the insurer and available for examination by state insurance regulators.
 - The reporting entity is not permitted to share this credit rating of the PL security with the SVO.
- Has the reporting entity self-designated PLGI securities? Yes [] No []

21. By assigning FE to a Schedule BA non-registered private fund, the reporting entity is certifying the following elements of each self-designated FE fund:
- The shares were purchased prior to January 1, 2019.
 - The reporting entity is holding capital commensurate with the NAIC Designation reported for the security.
 - The security had a public credit rating(s) with annual surveillance assigned by an NAIC CRP in its legal capacity as an NRSRO prior to January 1, 2019.
 - The fund only or predominantly holds bonds in its portfolio.
 - The current reported NAIC Designation was derived from the public credit rating(s) with annual surveillance assigned by an NAIC CRP in its legal capacity as an NRSRO.
 - The public credit rating(s) with annual surveillance assigned by an NAIC CRP has not lapsed.
- Has the reporting entity assigned FE to Schedule BA non-registered private funds that complied with the above criteria? Yes [] No []

GENERAL INTERROGATORIES

PART 2 - HEALTH

1. Operating Percentages:
- 1.1 A&H loss percent81.7 %
 - 1.2 A&H cost containment percent3.9 %
 - 1.3 A&H expense percent excluding cost containment expenses11.5 %
- 2.1 Do you act as a custodian for health savings accounts? Yes [] No [X]
- 2.2 If yes, please provide the amount of custodial funds held as of the reporting date\$
- 2.3 Do you act as an administrator for health savings accounts? Yes [] No [X]
- 2.4 If yes, please provide the balance of the funds administered as of the reporting date\$
3. Is the reporting entity licensed or chartered, registered, qualified, eligible or writing business in at least two states? Yes [] No [X]
- 3.1 If no, does the reporting entity assume reinsurance business that covers risks residing in at least one state other than the state of domicile of the reporting entity? Yes [] No [X]

SCHEDULE S - CEDED REINSURANCE

Showing All New Reinsurance Treaties - Current Year to Date

1 NAIC Company Code	2 ID Number	3 Effective Date	4 Name of Reinsurer	5 Domiciliary Jurisdiction	6 Type of Reinsurance Ceded	7 Type of Business Ceded	8 Type of Reinsurer	9 Certified Reinsurer Rating (1 through 6)	10 Effective Date of Certified Reinsurer Rating
NONE									

SCHEDULE T - PREMIUMS AND OTHER CONSIDERATIONS

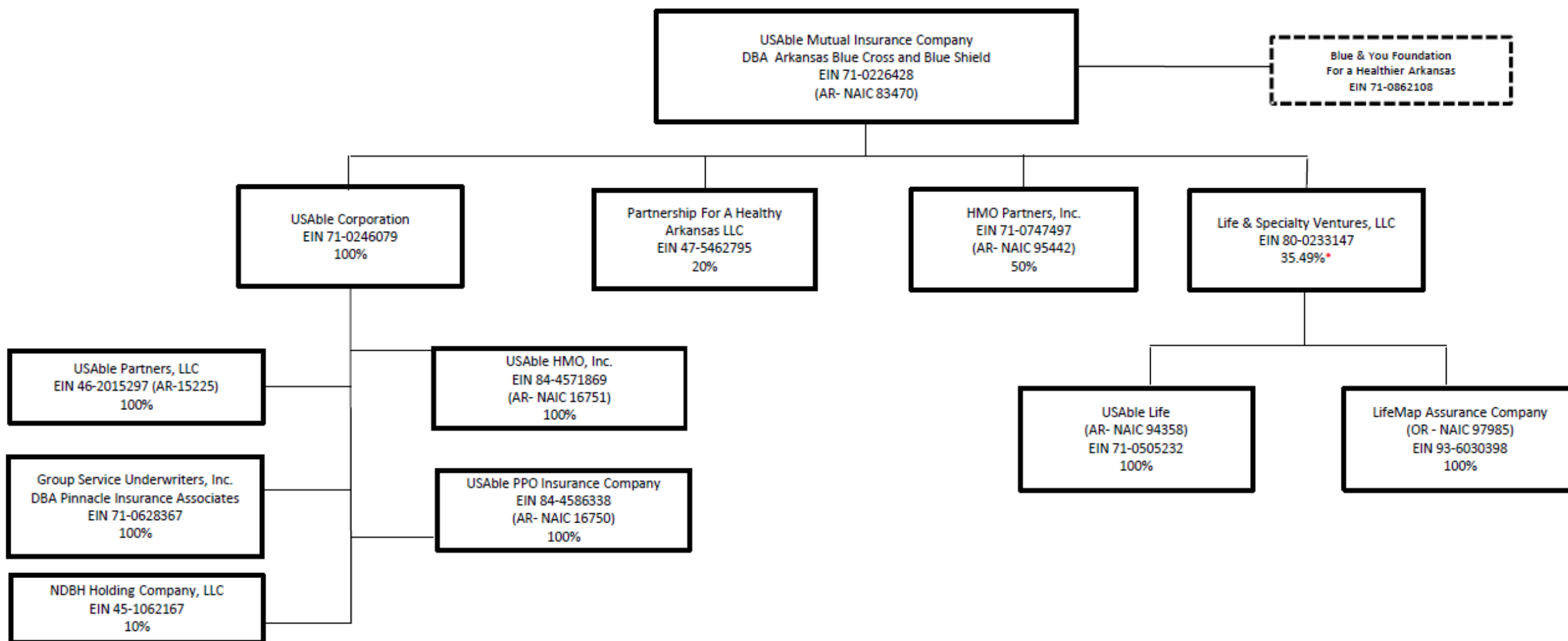
Current Year to Date - Allocated by States and Territories

States, etc.	1 Active Status (a)	Direct Business Only									
		2 Accident and Health Premiums	3 Medicare Title XVIII	4 Medicaid Title XIX	5 CHIP Title XXI	6 Federal Employees Health Benefits Program Premiums	7 Life and Annuity Premiums & Other Considerations	8 Property/Casualty Premiums	9 Total Columns 2 Through 8	10 Deposit-Type Contracts	
1. Alabama	AL	N								0	
2. Alaska	AK	N								0	
3. Arizona	AZ	N								0	
4. Arkansas	AR	L	237,138,228	21,610,890						258,749,118	
5. California	CA	N								0	
6. Colorado	CO	N								0	
7. Connecticut	CT	N								0	
8. Delaware	DE	N								0	
9. District of Columbia	DC	N								0	
10. Florida	FL	N								0	
11. Georgia	GA	N								0	
12. Hawaii	HI	N								0	
13. Idaho	ID	N								0	
14. Illinois	IL	N								0	
15. Indiana	IN	N								0	
16. Iowa	IA	N								0	
17. Kansas	KS	N								0	
18. Kentucky	KY	N								0	
19. Louisiana	LA	N								0	
20. Maine	ME	N								0	
21. Maryland	MD	N								0	
22. Massachusetts	MA	N								0	
23. Michigan	MI	N								0	
24. Minnesota	MN	N								0	
25. Mississippi	MS	N								0	
26. Missouri	MO	N								0	
27. Montana	MT	N								0	
28. Nebraska	NE	N								0	
29. Nevada	NV	N								0	
30. New Hampshire	NH	N								0	
31. New Jersey	NJ	N								0	
32. New Mexico	NM	N								0	
33. New York	NY	N								0	
34. North Carolina	NC	N								0	
35. North Dakota	ND	N								0	
36. Ohio	OH	N								0	
37. Oklahoma	OK	N								0	
38. Oregon	OR	N								0	
39. Pennsylvania	PA	N								0	
40. Rhode Island	RI	N								0	
41. South Carolina	SC	N								0	
42. South Dakota	SD	N								0	
43. Tennessee	TN	N								0	
44. Texas	TX	N								0	
45. Utah	UT	N								0	
46. Vermont	VT	N								0	
47. Virginia	VA	N								0	
48. Washington	WA	N								0	
49. West Virginia	WV	N								0	
50. Wisconsin	WI	N								0	
51. Wyoming	WY	N								0	
52. American Samoa	AS	N								0	
53. Guam	GU	N								0	
54. Puerto Rico	PR	N								0	
55. U.S. Virgin Islands	VI	N								0	
56. Northern Mariana Islands	MP	N								0	
57. Canada	CAN	N								0	
58. Aggregate Other Aliens	OT	XXX	0	0	0	0	0	0	0	0	0
59. Subtotal	XXX		237,138,228	21,610,890	0	0	0	0	0	258,749,118	0
60. Reporting Entity Contributions for Employee Benefit Plans	XXX		2,657,698							2,657,698	
61. Totals (Direct Business)	XXX		239,795,926	21,610,890	0	0	0	0	0	261,406,816	0
DETAILS OF WRITE-INS											
58001.	XXX										
58002.	XXX										
58003.	XXX										
58998. Summary of remaining write-ins for Line 58 from overflow page	XXX		0	0	0	0	0	0	0	0	0
58999. Totals (Lines 58001 through 58003 plus 58998)(Line 58 above)	XXX		0	0	0	0	0	0	0	0	0

(a) Active Status Counts:

L - Licensed or Chartered - Licensed Insurance carrier or domiciled RRG.....1 R - Registered - Non-domiciled RRGs.....0
 E - Eligible - Reporting entities eligible or approved to write surplus lines in the state.....0 Q - Qualified - Qualified or accredited reinsurer.....0
 N - None of the above - Not allowed to write business in the state.....56

SCHEDULE Y - INFORMATION CONCERNING ACTIVITIES OF INSURER MEMBERS OF A HOLDING COMPANY GROUP
PART 1 - ORGANIZATIONAL CHART



15

* Effective on or about December 31, 2021, Cambia Health Solutions, Inc. indirectly acquired a 17.6% interest in Life & Specialty Ventures, LLC thereby reducing UMIC's ownership percentage in Life & Specialty Ventures, LLC from 43.07% to 35.49%.

STATEMENT AS OF SEPTEMBER 30, 2022 OF THE HMO Partners, Inc

SCHEDULE Y

PART 1A - DETAIL OF INSURANCE HOLDING COMPANY SYSTEM

1	2	3	4	5	6	7	8	9	10	11	12	13	14	15	16
Group Code	Group Name	NAIC Company Code	ID Number	Federal RSSD	CIK	Name of Securities Exchange if Publicly Traded (U.S. or International)	Names of Parent, Subsidiaries Or Affiliates	Domiciliary Location	Relationship to Reporting Entity	Directly Controlled by (Name of Entity/Person)	Type of Control (Ownership, Board, Management, Attorney-in-Fact, Influence, Other)	If Control is Ownership Provide Percentage	Ultimate Controlling Entity(ies)/Person(s)	Is an SCA Filing Required? (Yes/No)	*
.0876	Arkansas BCBS Group	83470	71-0226428				USAbLe Mututal Insurance Company	AR	UDP	USAbLe Mutual Insurance Company	Board of Directors		USAbLe Mutual Insurance Company	NO	
.0876	Arkansas BCBS Group		71-0862108				Blue & You Foundation	AR	NIA	USAbLe Mutual Insurance Company	Board, Influence		USAbLe Mutual Insurance Company	NO	
.0876	Arkansas BCBS Group		71-0246079				USAbLe Corporation	AR	NIA	USAbLe Mutual Insurance Company	Ownership, Board, Influence	100.000	USAbLe Mutual Insurance Company	YES	
.0876	Arkansas BCBS Group		47-5462795				Partnership for a Healthy Arkansas LLC	AR	NIA	USAbLe Mutual Insurance Company	Ownership, Board, Influence	20.000	USAbLe Mutual Insurance Company	NO	
.0876	Arkansas BCBS Group	95442	71-0747497				HMO Partners, Inc.	AR	RE	USAbLe Mutual Insurance Company	Ownership, Board, Influence	50.000	USAbLe Mutual Insurance Company	NO	
.0876	Arkansas BCBS Group		80-0233147				Life & Specialty Ventures, LLC	DE	NIA	USAbLe Mutual Insurance Company	Ownership, Board	35.494	Life & Specialty Ventures, LLC	NO	
.0876	Arkansas BCBS Group		71-0628367				Group Service Underwriters, Inc	AR	NIA	USAbLe Corporation	Ownership, Board, Influence	100.000	USAbLe Mutual Insurance Company	NO	
.0876	Arkansas BCBS Group		46-2015297				USAbLe Partnrs, LLC	AR	IA	USAbLe Corporation	Ownership, Board, Influence	100.000	USAbLe Mutual Insurance Company	NO	
.0876	Arkansas BCBS Group		45-1062167				NDBH Holding Company, LLC	AR	NIA	USAbLe Corporation	Ownership, Board, Influence	10.000	USAbLe Mutual Insurance Company	NO	
.0876	Arkansas BCBS Group	16751	84-4571869				USAbLe HMO, Inc.	AR	IA	USAbLe Corporation	Ownership, Board, Influence	100.000	USAbLe Mutual Insurance Company	NO	
.0876	Arkansas BCBS Group	16750	84-4586338				USAbLe PPO Insurance Company	AR	IA	USAbLe Corporation	Ownership, Board, Influence	100.000	USAbLe Mutual Insurance Company	NO	
.0876	Arkansas BCBS Group	94358	71-0505232				USAbLe Life	AR	IA	Life & Specialty Ventures, LLC	Ownership	100.000	Life & Specialty Ventures, LLC	NO	
.0876	Arkansas BCBS Group	97985	93-6030398				Lifemap Assurance Company	OR	IA	Life & Specialty Ventures, LLC	Ownership	100.000	Life & Specialty Ventures, LLC	NO	

Asterisk	Explanation

SUPPLEMENTAL EXHIBITS AND SCHEDULES INTERROGATORIES

The following supplemental reports are required to be filed as part of your statement filing. However, in the event that your company does not transact the type of business for which the special report must be filed, your response of NO to the specific interrogatory will be accepted in lieu of filing a "NONE" report and a bar code will be printed below. If the supplement is required of your company but is not being filed for whatever reason enter SEE EXPLANATION and provide an explanation following the interrogatory questions.

	Response
1. Will the Medicare Part D Coverage Supplement be filed with the state of domicile and the NAIC with this statement?	NO

AUGUST FILING

2. Will the regulator-only (non-public) Communication of Internal Control Related Matters Noted in Audit be filed with the state of domicile and electronically with the NAIC (as a regulator-only non-public document) by August 1? The response for 1st and 3rd quarters should be N/A. A NO response resulting with a bar code is only appropriate in the 2nd quarter.	N/A
--	-----

Explanation:

1.

Bar Code:

1. Medicare Part D Coverage Supplement [Document Identifier 365]



OVERFLOW PAGE FOR WRITE-INS

STATEMENT AS OF SEPTEMBER 30, 2022 OF THE HMO Partners, Inc

SCHEDULE A - VERIFICATION

Real Estate

	1 Year to Date	2 Prior Year Ended December 31
1. Book/adjusted carrying value, December 31 of prior year		
2. Cost of acquired:		
2.1 Actual cost at time of acquisition		
2.2 Additional investment made after acquisition		
3. Current year change in encumbrances		
4. Total gain (loss) on disposals		
5. Deduct amounts received on disposals		
6. Total foreign exchange change in book/adjusted carrying value		
7. Deduct current year's other than temporary impairment recognized		
8. Deduct current year's depreciation		
9. Book/adjusted carrying value at the end of current period (Lines 1+2+3+4-5+6-7-8)		
10. Deduct total nonadmitted amounts		
11. Statement value at end of current period (Line 9 minus Line 10)		

NONE

SCHEDULE B - VERIFICATION

Mortgage Loans

	1 Year to Date	2 Prior Year Ended December 31
1. Book value/recorded investment excluding accrued interest, December 31 of prior year		
2. Cost of acquired:		
2.1 Actual cost at time of acquisition		
2.2 Additional investment made after acquisition		
3. Capitalized deferred interest and other		
4. Accrual of discount		
5. Unrealized valuation increase (decrease)		
6. Total gain (loss) on disposals		
7. Deduct amounts received on disposals		
8. Deduct amortization of premium and mortgage interest paid and commitment fees		
9. Total foreign exchange change in book value/recorded investment excluding accrued interest		
10. Deduct current year's other than temporary impairment recognized		
11. Book value/recorded investment excluding accrued interest at end of current period (Lines 1+2+3+4+5+6-7-8+9-10)		
12. Total valuation allowance		
13. Subtotal (Line 11 plus Line 12)		
14. Deduct total nonadmitted amounts		
15. Statement value at end of current period (Line 13 minus Line 14)		

NONE

SCHEDULE BA - VERIFICATION

Other Long-Term Invested Assets

	1 Year to Date	2 Prior Year Ended December 31
1. Book/adjusted carrying value, December 31 of prior year	12,908,131	11,997,929
2. Cost of acquired:		
2.1 Actual cost at time of acquisition	0	
2.2 Additional investment made after acquisition	82,785	127,655
3. Capitalized deferred interest and other	0	
4. Accrual of discount	0	
5. Unrealized valuation increase (decrease)	(1,947,031)	1,676,218
6. Total gain (loss) on disposals	(16,058)	233,687
7. Deduct amounts received on disposals	81,348	1,127,358
8. Deduct amortization of premium and depreciation	0	
9. Total foreign exchange change in book/adjusted carrying value	0	
10. Deduct current year's other than temporary impairment recognized	0	
11. Book/adjusted carrying value at end of current period (Lines 1+2+3+4+5+6-7-8+9-10)	10,946,479	12,908,131
12. Deduct total nonadmitted amounts	334,764	3,219,137
13. Statement value at end of current period (Line 11 minus Line 12)	10,611,715	9,688,994

SCHEDULE D - VERIFICATION

Bonds and Stocks

	1 Year to Date	2 Prior Year Ended December 31
1. Book/adjusted carrying value of bonds and stocks, December 31 of prior year	59,471,081	63,390,249
2. Cost of bonds and stocks acquired	10,067,664	21,506,962
3. Accrual of discount	11,720	107,974
4. Unrealized valuation increase (decrease)	(1,387,339)	1,528,080
5. Total gain (loss) on disposals	(117,875)	585,296
6. Deduct consideration for bonds and stocks disposed of	8,003,741	27,586,867
7. Deduct amortization of premium	(14,176)	163,224
8. Total foreign exchange change in book/adjusted carrying value	0	
9. Deduct current year's other than temporary impairment recognized	0	0
10. Total investment income recognized as a result of prepayment penalties and/or acceleration fees	10,843	102,611
11. Book/adjusted carrying value at end of current period (Lines 1+2+3+4+5-6-7+8-9+10)	60,066,528	59,471,081
12. Deduct total nonadmitted amounts	833,261	3,142,708
13. Statement value at end of current period (Line 11 minus Line 12)	59,233,268	56,328,373

STATEMENT AS OF SEPTEMBER 30, 2022 OF THE HMO Partners, Inc

SCHEDULE D - PART 1B

Showing the Acquisitions, Dispositions and Non-Trading Activity
During the Current Quarter for all Bonds and Preferred Stock by NAIC Designation

NAIC Designation	1 Book/Adjusted Carrying Value Beginning of Current Quarter	2 Acquisitions During Current Quarter	3 Dispositions During Current Quarter	4 Non-Trading Activity During Current Quarter	5 Book/Adjusted Carrying Value End of First Quarter	6 Book/Adjusted Carrying Value End of Second Quarter	7 Book/Adjusted Carrying Value End of Third Quarter	8 Book/Adjusted Carrying Value December 31 Prior Year
BONDS								
1. NAIC 1 (a)	46,554,092	3,381,974	3,073,299	(611)	46,122,504	46,554,092	46,862,156	45,633,594
2. NAIC 2 (a)	4,877,696	0	2,307	(4,285)	5,116,632	4,877,696	4,871,104	4,956,079
3. NAIC 3 (a)	110,296	0	0	(5,024)	125,385	110,296	105,271	128,257
4. NAIC 4 (a)	0	0	0	0	0	0	0	0
5. NAIC 5 (a)	0	0	0	0	0	0	0	0
6. NAIC 6 (a)	0	0	0	0	0	0	0	0
7. Total Bonds	51,542,084	3,381,974	3,075,606	(9,920)	51,364,521	51,542,084	51,838,532	50,717,930
PREFERRED STOCK								
8. NAIC 1	0	0	0	0	0	0	0	0
9. NAIC 2	0	0	0	0	0	0	0	0
10. NAIC 3	0	0	0	0	0	0	0	0
11. NAIC 4	0	0	0	0	0	0	0	0
12. NAIC 5	0	0	0	0	0	0	0	0
13. NAIC 6	0	0	0	0	0	0	0	0
14. Total Preferred Stock	0	0	0	0	0	0	0	0
15. Total Bonds and Preferred Stock	51,542,084	3,381,974	3,075,606	(9,920)	51,364,521	51,542,084	51,838,532	50,717,930

(a) Book/Adjusted Carrying Value column for the end of the current reporting period includes the following amount of short-term and cash equivalent bonds by NAIC designation:

NAIC 1 \$0 ; NAIC 2 \$0 ; NAIC 3 \$0 NAIC 4 \$0 ; NAIC 5 \$0 ; NAIC 6 \$0

S102

SCHEDULE DA - PART 1

Short-Term Investments

	1 Book/Adjusted Carrying Value	2 Par Value	3 Actual Cost	4 Interest Collected Year-to-Date	5 Paid for Accrued Interest Year-to-Date
7709999999 Totals	0	xxx	0	0	0

SCHEDULE DA - VERIFICATION

Short-Term Investments

	1 Year To Date	2 Prior Year Ended December 31
1. Book/adjusted carrying value, December 31 of prior year	699,776	
2. Cost of short-term investments acquired	796,704	2,799,493
3. Accrual of discount	1,735	58
4. Unrealized valuation increase (decrease)	0	
5. Total gain (loss) on disposals	(597)	40
6. Deduct consideration received on disposals	1,497,618	2,099,815
7. Deduct amortization of premium	0	
8. Total foreign exchange change in book/adjusted carrying value	0	
9. Deduct current year's other than temporary impairment recognized	0	
10. Book/adjusted carrying value at end of current period (Lines 1+2+3+4+5-6-7+8-9)	0	699,776
11. Deduct total nonadmitted amounts	0	
12. Statement value at end of current period (Line 10 minus Line 11)	0	699,776

Schedule DB - Part A - Verification - Options, Caps, Floors, Collars, Swaps and Forwards

N O N E

Schedule DB - Part B - Verification - Futures Contracts

N O N E

Schedule DB - Part C - Section 1 - Replication (Synthetic Asset) Transactions (RSATs) Open

N O N E

Schedule DB-Part C-Section 2-Reconciliation of Replication (Synthetic Asset) Transactions Open

N O N E

Schedule DB - Verification - Book/Adjusted Carrying Value, Fair Value and Potential Exposure of
Derivatives

N O N E

SCHEDULE E - PART 2 - VERIFICATION

(Cash Equivalents)

	1	2
	Year To Date	Prior Year Ended December 31
1. Book/adjusted carrying value, December 31 of prior year	1,673,777	1,713,985
2. Cost of cash equivalents acquired	32,126,548	30,811,113
3. Accrual of discount	398	52
4. Unrealized valuation increase (decrease)	0	
5. Total gain (loss) on disposals	30	28
6. Deduct consideration received on disposals	32,274,172	30,851,401
7. Deduct amortization of premium	0	
8. Total foreign exchange change in book/adjusted carrying value	0	
9. Deduct current year's other than temporary impairment recognized	0	
10. Book/adjusted carrying value at end of current period (Lines 1+2+3+4+5-6-7+8-9)	1,526,581	1,673,777
11. Deduct total nonadmitted amounts	0	
12. Statement value at end of current period (Line 10 minus Line 11)	1,526,581	1,673,777

Schedule A - Part 2 - Real Estate Acquired and Additions Made

N O N E

Schedule A - Part 3 - Real Estate Disposed

N O N E

Schedule B - Part 2 - Mortgage Loans Acquired and Additions Made

N O N E

Schedule B - Part 3 - Mortgage Loans Disposed, Transferred or Repaid

N O N E

STATEMENT AS OF SEPTEMBER 30, 2022 OF THE HMO Partners, Inc

SCHEDULE BA - PART 2

Showing Other Long-Term Invested Assets ACQUIRED AND ADDITIONS MADE During the Current Quarter

1 CUSIP Identification	2 Name or Description	Location		5 Name of Vendor or General Partner	6 NAIC Designation, NAIC Designation Modifier and SVO Admini- strative Symbol	7 Date Originally Acquired	8 Type and Strategy	9 Actual Cost at Time of Acquisition	10 Additional Investment Made After Acquisition	11 Amount of Encumbrances	12 Commitment for Additional Investment	13 Percentage of Ownership
		3 City	4 State									
97M5CM-3D-9	BABSON CAPITAL FLOATING RATE INCOME FUND		US	Barings		03/29/2018		0	23,714	0	0	0.000
	2399999. Joint Venture Interests - Mortgage Loans - Unaffiliated							0	23,714	0	0	XXX
	4899999. Total - Unaffiliated							0	23,714	0	0	XXX
	4999999. Total - Affiliated							0	0	0	0	XXX
5099999 - Totals												

SCHEDULE BA - PART 3

Showing Other Long-Term Invested Assets DISPOSED, Transferred or Repaid During the Current Quarter

1 CUSIP Identification	2 Name or Description	Location		5 Name of Purchaser or Nature of Disposal	6 Date Originally Acquired	7 Disposal Date	8 Book/ Adjusted Carrying Value Less Encum- brances, Prior Year	Change in Book/Adjusted Carrying Value						15 Book/ Adjusted Carrying Value Less Encum- brances on Disposal	16 Consid- eration	17 Foreign Exchange Gain (Loss) on Disposal	18 Realized Gain (Loss) on Disposal	19 Total Gain (Loss) on Disposal	20 Invest- ment Income
		3 City	4 State					9 Unrealized Valuation Increase (De- crease)	10 Current Year's (Depre- ciation) or (Amorti- zation)/ Accretion	11 Current Year's Other Than Temporary Impair- ment Recogn- ized	12 Capital- ized Deferred Interest and Other	13 Total Change in Book/ Adjusted Carrying Value (9+10- 11+12)	14 Total Foreign Exchange Change in Book/ Adjusted Carrying Value						
97M5CM-3D-9	BABSON CAPITAL FLOATING RATE INCOME FUND		US	Barings	03/29/2018	07/15/2022	34,594	0	0	0	0	0	0	34,594	18,506	0	(16,088)	(16,088)	0
	2399999. Joint Venture Interests - Mortgage Loans - Unaffiliated						34,594	0	0	0	0	0	0	34,594	18,506	0	(16,088)	(16,088)	0
	4899999. Total - Unaffiliated						34,594	0	0	0	0	0	0	34,594	18,506	0	(16,088)	(16,088)	0
	4999999. Total - Affiliated						0	0	0	0	0	0	0	0	0	0	0	0	0
5099999 - Totals																			

STATEMENT AS OF SEPTEMBER 30, 2022 OF THE HMO Partners, Inc

SCHEDULE D - PART 3

Show All Long-Term Bonds and Stock Acquired During the Current Quarter

1	2	3	4	5	6	7	8	9	10
CUSIP Identification	Description	Foreign	Date Acquired	Name of Vendor	Number of Shares of Stock	Actual Cost	Par Value	Paid for Accrued Interest and Dividends	NAIC Designation, NAIC Designation Modifier and SVO Administrative Symbol
31320W-E3-3	FH SD8254 - RMBS		.09/09/2022	BMO CAPITAL MARKETS CORP		412,840	450,000	450	1.A
31320W-E6-4	FH SD8235 - RMBS		.07/25/2022	BOFA SECURITIES, INC		948,086	1,000,000	2,167	1.A
31418D-6A-5	FN MA4464 - RMBS		.09/28/2022	WELLS FARGO SECURITIES, LLC		223,213	287,249	347	1.A
31418E-E3-0	FN MA4653 - RMBS		.09/23/2022	MORGAN STANLEY & CO. LLC		174,172	198,029	429	1.A
0909999999. Subtotal - Bonds - U.S. Special Revenues						1,758,311	1,935,278	3,393	XXX
06051G-KW-8	BANK OF AMERICA CORP		.07/19/2022	BOFA SECURITIES, INC		200,000	200,000	0	1.F FE
61747Y-ET-8	MORGAN STANLEY		.07/18/2022	MORGAN STANLEY & CO. LLC		200,000	200,000	0	1.F FE
63939K-AC-3	NAVSL 2015-B A3 - ABS		.09/21/2022	J.P. MORGAN SECURITIES LLC		126,015	126,728	120	1.A FE
78445Q-AE-1	SLMA 2010-C A5 - ABS		.09/08/2022	GOLDMAN SACHS & CO.		97,686	90,398	502	1.A FE
1109999999. Subtotal - Bonds - Industrial and Miscellaneous (Unaffiliated)						623,701	617,125	622	XXX
2509999997. Total - Bonds - Part 3						2,382,012	2,552,403	4,015	XXX
2509999998. Total - Bonds - Part 5						XXX	XXX	XXX	XXX
2509999999. Total - Bonds						2,382,012	2,552,403	4,015	XXX
4509999997. Total - Preferred Stocks - Part 3						0	XXX	0	XXX
4509999998. Total - Preferred Stocks - Part 5						XXX	XXX	XXX	XXX
4509999999. Total - Preferred Stocks						0	XXX	0	XXX
46636U-87-6	JPMORGAN EQUITY INC R6		.09/29/2022	U.S. Bank	2,460,336	53,741		0	
5329999999. Subtotal - Common Stocks - Mutual Funds - Designations Not Assigned by the SVO						53,741	XXX	0	XXX
5989999997. Total - Common Stocks - Part 3						53,741	XXX	0	XXX
5989999998. Total - Common Stocks - Part 5						XXX	XXX	XXX	XXX
5989999999. Total - Common Stocks						53,741	XXX	0	XXX
5999999999. Total - Preferred and Common Stocks						53,741	XXX	0	XXX
6009999999 - Totals						2,435,753	XXX	4,015	XXX

STATEMENT AS OF SEPTEMBER 30, 2022 OF THE HMO Partners, Inc

SCHEDULE D - PART 4

Show All Long-Term Bonds and Stock Sold, Redeemed or Otherwise Disposed of During the Current Quarter

1	2	3	4	5	6	7	8	9	10	Change In Book/Adjusted Carrying Value					16	17	18	19	20	21	22
										11	12	13	14	15							
CUSIP Identification	Description	For-ign	Disposal Date	Name of Purchaser	Number of Shares of Stock	Consid-eration	Par Value	Actual Cost	Prior Year Book/ Adjusted Carrying Value	Unrealized Valuation Increase/ (Decrease)	Current Year's (Amor-tization)/ Accretion	Current Year's Other Than Temporary Impairment Recogn-ized	Total Change in Book/ Adjusted Carrying Value (11 + 12 - 13)	Total Foreign Exchange Change in Book /Adjusted Carrying Value	Book/ Adjusted Carrying Value at Disposal Date	Foreign Exchange Gain (Loss) on Disposal	Realized Gain (Loss) on Disposal	Total Gain (Loss) on Disposal	Bond Interest/ Stock Dividends Received During Year	Stated Con-tractual Maturity Date	NAIC Design-ation, NAIC Design-ation Modifier and SVO Admini-strative Symbol
38378U-8L-4	GNR 2015-H04 FA - CMO/RMBS		09/20/2022	Paydown		1,887	1,887	1,898	1,880	0	31	0	31	0	1,911	0	(25)	(25)	14	12/20/2064	1.A
912828-LS-7	UNITED STATES TREASURY		09/30/2022	Maturity @ 100.00		350,000	350,000	344,695	349,502	0	835	0	835	0	350,000	0	0	0	6,125	09/30/2022	1.A
0109999999. Subtotal - Bonds - U.S. Governments						351,887	351,887	346,593	351,382	0	866	0	866	0	351,911	0	(25)	(25)	6,139	XXX	XXX
01026C-AC-5	ALABAMA ECONOMIC SETTLEMENT AUTH BP SETT		09/15/2022	Call @ 100.00		10,000	10,000	10,065	10,039	0	(7)	0	(7)	0	10,032	0	(32)	(32)	316	09/15/2025	1.6 FE
3128MJ-3I-8	FH 608812 - RMBS		09/01/2022	Paydown		19,540	19,540	18,776	18,697	0	(304)	0	(304)	0	18,394	0	1,147	1,147	393	04/01/2048	1.A
3132DM-3L-7	FH SD0803 - RMBS		09/01/2022	Paydown		7,765	7,765	7,827	7,827	0	(2)	0	(2)	0	7,825	0	(59)	(59)	117	01/01/2052	1.A
3132DV-3M-5	FH SD8004 - RMBS		09/01/2022	Paydown		2,243	2,243	2,271	2,296	0	29	0	29	0	2,325	0	(82)	(82)	45	08/01/2049	1.A
3132DV-4W-2	FH SD8037 - RMBS		09/01/2022	Paydown		14,125	14,125	14,052	14,028	0	(14)	0	(14)	0	14,014	0	111	111	236	01/01/2050	1.A
3132DV-7J-8	FH SD8097 - RMBS		09/01/2022	Paydown		12,448	12,448	12,796	12,840	0	9	0	9	0	12,849	0	(401)	(401)	164	08/01/2050	1.A
3132DV-A6-0	FH SD8129 - RMBS		09/01/2022	Paydown		11,776	11,776	12,330	12,371	0	48	0	48	0	12,419	0	(643)	(643)	194	02/01/2051	1.A
3132DV-AP-8	FH SD8114 - RMBS		09/01/2022	Paydown		2,183	2,183	2,287	2,297	0	10	0	10	0	2,306	0	(124)	(124)	36	12/01/2050	1.A
3132DV-BU-6	FH SD8151 - RMBS		09/01/2022	Paydown		5,991	5,991	6,204	6,191	0	17	0	17	0	6,208	0	(218)	(218)	99	06/01/2051	1.A
3132DV-CC-5	FH SD8167 - RMBS		09/01/2022	Paydown		16,465	16,465	16,988	16,975	0	8	0	8	0	16,983	0	(518)	(518)	272	09/01/2051	1.A
3132DV-CP-6	FH SD8178 - RMBS		09/01/2022	Paydown		6,040	6,040	6,205	6,202	0	(1)	0	(1)	0	6,201	0	(161)	(161)	100	11/01/2051	1.A
3132DV-DT-7	FH SD8214 - RMBS		09/01/2022	Paydown		12,497	12,497	12,142	12,142	0	6	0	6	0	12,148	0	350	350	109	05/01/2052	1.A
3132DV-EG-4	FH SD8235 - RMBS		09/01/2022	Paydown		10,451	10,451	9,909	9,909	0	2	0	2	0	9,910	0	541	541	42	08/01/2052	1.A
3132XY-XM-4	FH 056083 - RMBS		09/01/2022	Paydown		2,072	2,072	2,043	2,036	0	(22)	0	(22)	0	2,014	0	58	58	51	05/01/2048	1.A
3133KN-K6-9	FH RA6617 - RMBS		09/01/2022	Paydown		3,124	3,124	3,073	3,073	0	1	0	1	0	3,074	0	51	51	37	01/01/2052	1.A
3136BC-PR-5	FNR 2020-079 JA - CMO/RMBS		09/01/2022	Paydown		6,521	6,521	6,683	6,668	0	(8)	0	(8)	0	6,660	0	(139)	(139)	65	11/25/2047	1.A
31418C-NE-0	FN MA3088 - RMBS		09/01/2022	Paydown		19,067	19,067	19,374	19,445	0	237	0	237	0	19,682	0	(615)	(615)	502	08/01/2047	1.A
31418C-U7-7	FN MA3305 - RMBS		09/01/2022	Paydown		11,859	11,859	11,741	11,729	0	(60)	0	(60)	0	11,669	0	190	190	277	03/01/2048	1.A
31418C-V2-7	FN MA3332 - RMBS		09/01/2022	Paydown		19,102	19,102	18,911	18,892	0	(98)	0	(98)	0	18,794	0	309	309	450	04/01/2048	1.A
31418D-2N-1	FN MA4380 - RMBS		09/01/2022	Paydown		23,222	23,222	24,372	24,302	0	186	0	186	0	24,488	0	(1,266)	(1,266)	460	07/01/2051	1.A
31418D-7F-3	FN MA4493 - RMBS		09/01/2022	Paydown		9,881	9,881	10,114	10,110	0	(3)	0	(3)	0	10,108	0	(227)	(227)	164	12/01/2051	1.A
31418D-FF-4	FN MA3765 - RMBS		09/01/2022	Paydown		2,050	2,050	2,061	2,071	0	6	0	6	0	2,078	0	(28)	(28)	33	09/01/2049	1.A
31418D-GK-2	FN MA3801 - RMBS		09/01/2022	Paydown		1,378	1,378	1,371	1,368	0	(2)	0	(2)	0	1,367	0	11	11	23	10/01/2049	1.A
31418D-GH-8	FN MA3803 - RMBS		09/01/2022	Paydown		37,036	37,036	38,224	39,180	0	1,285	0	1,285	0	40,465	0	(3,429)	(3,429)	855	10/01/2049	1.A
31418D-GN-6	FN MA3804 - RMBS		09/01/2022	Paydown		5,999	5,999	6,265	6,429	0	221	0	221	0	6,650	0	(651)	(651)	161	10/01/2049	1.A
31418D-KT-8	FN MA3905 - RMBS		09/01/2022	Paydown		60,347	60,347	61,469	62,186	0	780	0	780	0	62,966	0	(2,619)	(2,619)	1,195	01/01/2050	1.A
31418D-Q7-0	FN MA4077 - RMBS		09/01/2022	Paydown		11,603	11,603	11,849	11,883	0	7	0	7	0	11,890	0	(287)	(287)	153	07/01/2050	1.A
31418D-UG-5	FN MA4182 - RMBS		09/01/2022	Paydown		8,697	8,697	8,974	8,977	0	5	0	5	0	8,981	0	(284)	(284)	115	11/01/2050	1.A
31418D-V7-4	FN MA4237 - RMBS		09/01/2022	Paydown		11,166	11,166	11,459	11,458	0	4	0	4	0	11,462	0	(295)	(295)	148	01/01/2051	1.A
31418D-WS-7	FN MA4256 - RMBS		09/01/2022	Paydown		11,282	11,282	11,813	11,855	0	51	0	51	0	11,906	0	(625)	(625)	187	02/01/2051	1.A
31418D-YK-3	FN MA4281 - RMBS		09/01/2022	Paydown		4,788	4,788	4,939	4,936	0	1	0	1	0	4,937	0	(150)	(150)	63	03/01/2051	1.A
31418D-ZW-5	FN MA4356 - RMBS		09/01/2022	Paydown		5,775	5,775	5,981	5,969	0	17	0	17	0	5,985	0	(210)	(210)	95	06/01/2051	1.A
0909999999. Subtotal - Bonds - U.S. Special Revenues						386,493	386,493	392,566	361,431	0	2,407	0	2,407	0	396,788	0	(10,295)	(10,295)	7,156	XXX	XXX
001055-AM-4	AFLAC INC		09/30/2022	Call @ 100.00		250,000	250,000	251,348	250,627	0	(157)	0	(157)	0	250,470	0	(470)	(470)	7,930	11/15/2024	1.6 FE
04002P-AA-2	AREIT 2021-CRES A - CMBS		08/17/2022	Paydown		15,581	15,581	15,581	15,581	0	0	0	0	0	15,581	0	0	0	176	11/18/2038	1.A FE
04002V-AA-9	AREIT 22CREG A - CMBS		09/15/2022	Paydown		7,412	7,412	7,412	7,412	0	0	0	0	0	7,412	0	0	0	71	01/19/2037	1.A FE
0605AM-AC-7	BACM 2016-UBS10 ASB - CMBS		09/01/2022	Paydown		12,552	12,552	12,314	12,446	0	14	0	14	0	12,460	0	92	92	270	07/16/2049	1.A FE
12515G-AE-7	CD 2017-CD3 AAB - CMBS		09/01/2022	Paydown		4,814	4,814	4,782	4,798	0	1	0	1	0	4,800	0	15	15	117	02/11/2050	1.A FE
12555D-AB-1	CIIM 2019-INV1 A2 - CMO/RMBS		09/25/2022	Paydown		435	435	434	430	0	8	0	8	0	438	0	(3)	(3)	5	02/25/2049	1.A FE
12661X-AC-6	CSMC 211NV1 A3 - CMO/RMBS		09/25/2022	Paydown		1,586	1,586	1,622	1,622	0	0	0	0	0	1,621	0	(35)	(35)	26	07/25/2056	1.A FE
17290F-BA-6	CMIT1 221NV1 A3B - CMO/RMBS		09/01/2022	Paydown		9,478	9,478	9,427	9,427	0	0	0	0	0	9,427	0	52	52	164	11/27/2051	1.A FE
17290Y-AS-7	CGOMT 2016-C1 AAB - CMBS		09/01/2022	Paydown		5,181	5,181	5,056	5,129	0	7	0	7	0	5,136	0	45	45	103	05/12/2049	1.A FE
19688G-AA-1	COLT 2021-4 A1 - CMO/RMBS		09/01/2022	Paydown		2,922	2,922	2,922	2,922	0	0	0	0	0	2,922	0	0	0	26	10/25/2066	1.A FE
20268A-AA-0	CBSLT 21BGS A - ABS		09/25/2022	Paydown		6,271	6,271	6,270	6,270	0	0	0	0	0	6,270	0	1	1	49	09/25/2051	1.A FE
24381W-AC-2	DRMT 2021-2 A3 - CMO/RMBS		09/01/2022	Paydown		13,197	13,197	13,197	13,197	0	1	0	1	0	13,198	0	(1)	(1)	113	04/26/2066	1.F FE
26829G-AA-6	ECMC 2018-2 A - ABS		09/26/2022	Paydown		1,035	1,035	1,034	1,048	0	23	0	23	0	1,072	0	(36)	(36)	11	09/25/2068	1.A FE
26833R-AB-4	ECMC 2021-1 A1B - ABS		09/26/2022	Paydown		9,344	9,344	9,344	9,344	0	0	0	0	0	9,344	0	0	0	86	11/25/2070	1.A FE
28628B-AA-6	ELF1 2021-A A - ABS		09/25/2022	Paydown		6,041	6,041	6,040	6,040	0	0	0	0	0	6,040	0	1	1	62	12/26/2046	1.A FE
36168K-AA-5	GCAT 21NOMS A1 - CMO/RMBS		09/25/2022	Paydown		6,673															

STATEMENT AS OF SEPTEMBER 30, 2022 OF THE HMO Partners, Inc

SCHEDULE D - PART 4

Show All Long-Term Bonds and Stock Sold, Redeemed or Otherwise Disposed of During the Current Quarter

1	2	3	4	5	6	7	8	9	10	Change In Book/Adjusted Carrying Value					16	17	18	19	20	21	22	
										11	12	13	14	15								
CUSIP Identification	Description	For- eign	Disposal Date	Name of Purchaser	Number of Shares of Stock	Consid- eration	Par Value	Actual Cost	Prior Year Book/ Adjusted Carrying Value	Unrealized Valuation Increase/ (Decrease)	Current Year's (Amor- tization)/ Accretion	Current Year's Other Than Temporary Impairment Recogn- ized	Total Change in Book/ Adjusted Carrying Value (11 + 12 - 13)	Total Foreign Exchange Change in Book /Adjusted Carrying Value	Book/ Adjusted Carrying Value at Disposal Date	Foreign Exchange Gain (Loss) on Disposal	Realized Gain (Loss) on Disposal	Total Gain (Loss) on Disposal	Bond Interest/ Stock Dividends Received During Year	Stated Con- tractual Maturity Date	NAIC Desig- nation, NAIC Desig- nation Modifier and SVO Admini- strative Symbol	
552751-AA-7	MFRA 20NQM2 A1 - CMO/RMBS		09/25/2022	Paydown		6,600	6,600	6,600	6,600	0	0	0	0	0	6,600	0	0	0	62	04/27/2065	1.A FE	
552754-AA-1	MFRA 2020-NQM1 A1 - CMO/RMBS		09/01/2022	Paydown		6,751	6,751	6,751	6,751	0	0	0	0	0	6,751	0	0	0	65	03/25/2065	1.A FE	
59319W-AA-9	MF1 2020-FL3 A - CDO		07/15/2022	Paydown		19,703	19,703	19,703	19,703	0	0	0	0	0	19,703	0	0	0	302	07/16/2035	1.A FE	
59981B-AC-8	MCMLT 19GS1 A1 - CMO/RMBS		09/25/2022	Paydown		2,629	2,629	2,641	2,631	0	(1)	0	(1)	0	2,630	0	(1)	(1)	48	07/25/2059	1.A FE	
61690Y-BS-0	MSC 2016-BNK2 ASB - CMBS		09/01/2022	Paydown		4,457	4,457	4,300	4,389	0	9	0	9	0	4,398	0	59	59	85	11/18/2049	1.A FE	
63939K-AC-3	NAVSL 2015-B A3 - ABS		09/15/2022	Paydown		3,060	3,060	3,092	3,096	0	29	0	29	0	3,125	0	(65)	(65)	45	07/16/2040	1.A FE	
64352V-NY-3	NCHET 2005-C A2D - RMBS		09/26/2022	Paydown		9,509	9,509	9,411	9,478	0	58	0	58	0	9,536	0	(27)	(27)	91	12/25/2035	1.F FE	
64828X-AA-1	NRZT 2020-RPL1 A1 - CMO/RMBS		09/01/2022	Paydown		5,629	5,629	5,720	5,737	0	(17)	0	(17)	0	5,720	0	(91)	(91)	102	11/25/2059	1.A FE	
64829V-AA-4	NRZT 18RPL1 A1 - CMO/RMBS		09/01/2022	Paydown		5,511	5,511	5,908	5,899	0	(3)	0	(3)	0	5,896	0	(385)	(385)	127	12/26/2057	1.A FE	
69290L-AA-5	PPF 217 A - CMBS	C	09/16/2022	Paydown		26,301	26,301	26,301	26,301	0	0	0	0	0	26,301	0	0	0	291	04/16/2038	1.A FE	
69346W-AA-5	PPF 2019-6 A - CMBS	C	07/15/2022	Paydown		2,302	2,302	2,302	2,302	0	0	0	0	0	2,302	0	0	0	21	04/16/2037	1.A FE	
78445Q-AE-1	SLMA 2010-C A5 - ABS		09/15/2022	Paydown		1,484	1,484	1,604	1,604	0	1	0	1	0	1,605	0	(121)	(121)	9	10/15/2041	1.A FE	
78449B-AB-2	SMB 2020-PT-B A2A - ABS		09/25/2022	Paydown		8,826	8,826	8,842	8,840	0	1	0	1	0	8,841	0	(15)	(15)	94	09/15/2054	1.A FE	
78449V-AC-0	SMB 2020-PT-A A2B - ABS		09/26/2022	Paydown		8,867	8,867	8,756	8,756	0	164	0	164	0	8,921	0	(53)	(53)	100	09/15/2054	1.A FE	
85573H-AA-8	STAR 212 A1 - CMO/RMBS		09/01/2022	Paydown		9,648	9,648	9,648	9,648	0	0	0	0	0	9,648	0	0	0	62	05/25/2065	1.A FE	
85573M-AA-7	STAR 2020-3 A1 - CMO/RMBS		09/01/2022	Paydown		2,588	2,588	2,588	2,588	0	0	0	0	0	2,588	0	0	0	25	04/25/2065	1.A FE	
89177B-AA-3	TPMT 2019-1 A1 - RMBS		09/01/2022	Paydown		6,431	6,431	6,925	6,911	0	(42)	0	(42)	0	6,869	0	(439)	(439)	164	03/25/2058	1.A FE	
89177H-AA-0	TPMT 2019-HV2 A1 - RMBS		09/26/2022	Paydown		8,817	8,817	8,884	8,913	0	107	0	107	0	9,020	0	(203)	(203)	100	05/25/2058	1.A FE	
89177X-AA-5	TPMT 2019-HV3 A1A - RMBS		09/26/2022	Paydown		3,518	3,518	3,523	3,522	0	55	0	55	0	3,577	0	(59)	(59)	41	10/27/2059	1.A FE	
90931E-AA-2	UAL A - ABS		08/25/2022	Paydown		2,307	2,307	2,307	2,307	0	0	0	0	0	2,307	0	0	0	105	08/25/2033	2.B FE	
90931G-AA-7	UNITED AIRLINES PASS THROUGH TRUST 2020-		07/15/2022	Paydown		2,823	2,823	3,137	3,127	0	(27)	0	(27)	0	3,100	0	(277)	(277)	124	10/15/2027	1.G FE	
92538E-AA-5	VERUS 21R3 A1 - CMO/RMBS		09/01/2022	Paydown		6,594	6,594	6,594	6,594	0	1	0	1	0	6,596	0	(1)	(1)	45	04/25/2064	1.A FE	
92538G-AA-0	VERUS 2021-8 A1 - CMO/RMBS		09/01/2022	Paydown		6,761	6,761	6,761	6,761	0	3	0	3	0	6,764	0	(3)	(3)	80	11/26/2066	1.A FE	
92939F-AT-6	WFRBS 2014-C21 A4 - CMBS		09/01/2022	Paydown		1,008	1,008	1,028	1,017	0	(2)	0	(2)	0	1,015	0	(7)	(7)	27	08/16/2047	1.A FE	
94989Y-BA-0	WFCM 2016-C32 ASB - CMBS		09/01/2022	Paydown		4,988	4,988	4,954	4,971	0	2	0	2	0	4,972	0	15	15	122	01/17/2059	1.A FE	
1109999999	Subtotal - Bonds - Industrial and Miscellaneous (Unaffiliated)					526,447	526,447	528,396	509,825	0	224	0	224	0	528,491	0	(2,044)	(2,044)	11,793	XXX	XXX	
2509999997	Total - Bonds - Part 4					1,264,827	1,264,827	1,267,555	1,222,638	0	3,497	0	3,497	0	1,277,190	0	(12,363)	(12,363)	25,088	XXX	XXX	
2509999998	Total - Bonds - Part 5					XXX	XXX	XXX	XXX	XXX	XXX	XXX	XXX	XXX	XXX	XXX	XXX	XXX	XXX	XXX	XXX	XXX
2509999999	Total - Bonds					1,264,827	1,264,827	1,267,555	1,222,638	0	3,497	0	3,497	0	1,277,190	0	(12,363)	(12,363)	25,088	XXX	XXX	
4509999997	Total - Preferred Stocks - Part 4					0	XXX	0	0	0	0	0	0	0	0	0	0	0	0	0	XXX	XXX
4509999998	Total - Preferred Stocks - Part 5					XXX	XXX	XXX	XXX	XXX	XXX	XXX	XXX	XXX	XXX	XXX	XXX	XXX	XXX	XXX	XXX	XXX
4509999999	Total - Preferred Stocks					0	XXX	0	0	0	0	0	0	0	0	0	0	0	0	0	XXX	XXX
5989999997	Total - Common Stocks - Part 4					0	XXX	0	0	0	0	0	0	0	0	0	0	0	0	0	XXX	XXX
5989999998	Total - Common Stocks - Part 5					XXX	XXX	XXX	XXX	XXX	XXX	XXX	XXX	XXX	XXX	XXX	XXX	XXX	XXX	XXX	XXX	XXX
5989999999	Total - Common Stocks					0	XXX	0	0	0	0	0	0	0	0	0	0	0	0	0	XXX	XXX
5999999999	Total - Preferred and Common Stocks					0	XXX	0	0	0	0	0	0	0	0	0	0	0	0	0	XXX	XXX
6009999999	Totals					1,264,827	XXX	1,267,555	1,222,638	0	3,497	0	3,497	0	1,277,190	0	(12,363)	(12,363)	25,088	XXX	XXX	

E05.1

Schedule DB - Part A - Section 1 - Options, Caps, Floors, Collars, Swaps and Forwards Open

N O N E

Schedule DB - Part B - Section 1 - Futures Contracts Open

N O N E

Schedule DB - Part B - Section 1B - Brokers with whom cash deposits have been made

N O N E

Schedule DB - Part D - Section 1 - Counterparty Exposure for Derivative Instruments Open

N O N E

Schedule DB - Part D-Section 2 - Collateral for Derivative Instruments Open - Pledged By

N O N E

Schedule DB - Part D-Section 2 - Collateral for Derivative Instruments Open - Pledged To

N O N E

Schedule DB - Part E - Derivatives Hedging Variable Annuity Guarantees

N O N E

Schedule DL - Part 1 - Reinvested Collateral Assets Owned

N O N E

Schedule DL - Part 2 - Reinvested Collateral Assets Owned

N O N E

