



HEALTH QUARTERLY STATEMENT

AS OF MARCH 31, 2024
OF THE CONDITION AND AFFAIRS OF THE

Coventry Health Care of Missouri, Inc.

NAIC Group Code 0001 0001 NAIC Company Code 96377 Employer's ID Number 43-1372307
(Current) (Prior)

Organized under the Laws of Missouri State of Domicile or Port of Entry MO

Country of Domicile United States of America

Licensed as business type: Health Maintenance Organization

Is HMO Federally Qualified? Yes [] No [X]

Incorporated/Organized 05/22/1985 Commenced Business 11/01/1985

Statutory Home Office 1285 Fern Ridge Parkway, Suite 200 St. Louis, MO, US 63141
(Street and Number) (City or Town, State, Country, and Zip Code)

Main Administrative Office 1285 Fern Ridge Parkway, Suite 200
(Street and Number)
St. Louis, MO, US 63141 314-506-1700
(City or Town, State, Country, and Zip Code) (Area Code) (Telephone Number)

Mail Address Attn: Stat Compliance; P.O. Box 818048 Cleveland, OH, US 44181-8048
(Street and Number or P.O. Box) (City or Town, State, Country, and Zip Code)

Primary Location of Books and Records 1285 Fern Ridge Parkway, Suite 200
(Street and Number)
St. Louis, MO, US 63141 314-506-1700
(City or Town, State, Country, and Zip Code) (Area Code) (Telephone Number)

Internet Website Address www.aetna.com

Statutory Statement Contact Kim E. Roth 215-775-6508
(Name) (Area Code) (Telephone Number)
StatutoryReporting@aetna.com 860-262-7767
(E-mail Address) (FAX Number)

OFFICERS

Vice President and Secretary Edward Chung-I Lee Corporate Controller Steven Matthew Conte


OTHER

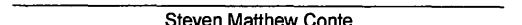
Michael Thomas Avotins, President Derek Scott Blunt, Senior Investment Officer Amy Christine Fletcher, Chief Financial Officer
Peter Keller, Assistant Controller Scott David Miller, Assistant Controller Tracy Louise Smith, Vice President and Treasurer
Whitney Dorothy Todisco, Assistant Controller

DIRECTORS OR TRUSTEES

John David Anders Michael Thomas Avotins Amy Christine Fletcher

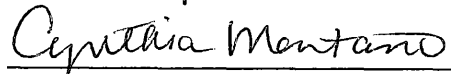
The officers of this reporting entity being duly sworn, each depose and say that they are the described officers of said reporting entity, and that on the reporting period stated above, all of the herein described assets were the absolute property of the said reporting entity, free and clear from any liens or claims thereon, except as herein stated, and that this statement, together with related exhibits, schedules and explanations therein contained, annexed or referred to, is a full and true statement of all the assets and liabilities and of the condition and affairs of the said reporting entity as of the reporting period stated above, and of its income and deductions therefrom for the period ended, and have been completed in accordance with the NAIC Annual Statement Instructions and Accounting Practices and Procedures manual except to the extent that: (1) state law may differ; or, (2) that state rules or regulations require differences in reporting not related to accounting practices and procedures, according to the best of their information, knowledge and belief, respectively. Furthermore, the scope of this attestation by the described officers also includes the related corresponding electronic filing with the NAIC, when required, that is an exact copy (except for formatting differences due to electronic filing) of the enclosed statement. The electronic filing may be requested by various regulators in lieu of or in addition to the enclosed statement.


 Edward Chung-I Lee
 Vice President and Secretary


 Steven Matthew Conte
 Corporate Controller

State of..... Connecticut
 County of.... Hartford

Subscribed and sworn to before me this
27th day of April, 2024


 NOTARY PUBLIC (Seal)

State of..... Pennsylvania
 County of.... Montgomery

Subscribed and sworn to before me this
 ___ day of _____, 2024

NOTARY PUBLIC (Seal)



- a. Is this an original filing? Yes [X] No []
 b. If no,
 1. State the amendment number.....
 2. Date filed
 3. Number of pages attached.....

STATEMENT AS OF MARCH 31, 2024 OF THE Coventry Health Care of Missouri, Inc.

ASSETS

	Current Statement Date			4 December 31 Prior Year Net Admitted Assets
	1 Assets	2 Nonadmitted Assets	3 Net Admitted Assets (Cols. 1 - 2)	
1. Bonds	332,562,047	0	332,562,047	301,241,224
2. Stocks:				
2.1 Preferred stocks	0	0	0	0
2.2 Common stocks	0	0	0	0
3. Mortgage loans on real estate:				
3.1 First liens	5,793,291	0	5,793,291	5,801,342
3.2 Other than first liens.....	0	0	0	0
4. Real estate:				
4.1 Properties occupied by the company (less \$0 encumbrances)	0	0	0	0
4.2 Properties held for the production of income (less \$0 encumbrances)	0	0	0	0
4.3 Properties held for sale (less \$0 encumbrances)	0	0	0	0
5. Cash (\$25,768,485), cash equivalents (\$72,056,406) and short-term investments (\$)	97,824,891	0	97,824,891	98,850,684
6. Contract loans (including \$0 premium notes)	0	0	0	0
7. Derivatives	0	0	0	0
8. Other invested assets	9,380,553	0	9,380,553	9,143,798
9. Receivables for securities	82,500	0	82,500	0
10. Securities lending reinvested collateral assets	0	0	0	0
11. Aggregate write-ins for invested assets	0	0	0	0
12. Subtotals, cash and invested assets (Lines 1 to 11)	445,643,282	0	445,643,282	415,037,048
13. Title plants less \$0 charged off (for Title insurers only)	0	0	0	0
14. Investment income due and accrued	3,370,077	0	3,370,077	3,211,222
15. Premiums and considerations:				
15.1 Uncollected premiums and agents' balances in the course of collection	3,126,132	728,923	2,397,209	243,909
15.2 Deferred premiums, agents' balances and installments booked but deferred and not yet due (including \$0 earned but unbilled premiums)	0	0	0	0
15.3 Accrued retrospective premiums (\$3,863,415) and contracts subject to redetermination (\$56,719,605)	60,583,020	0	60,583,020	30,700,586
16. Reinsurance:				
16.1 Amounts recoverable from reinsurers	0	0	0	0
16.2 Funds held by or deposited with reinsured companies	0	0	0	0
16.3 Other amounts receivable under reinsurance contracts	0	0	0	0
17. Amounts receivable relating to uninsured plans	4,840,329	0	4,840,329	5,767,151
18.1 Current federal and foreign income tax recoverable and interest thereon	8,140,567	0	8,140,567	5,352,881
18.2 Net deferred tax asset	2,174,617	0	2,174,617	2,174,617
19. Guaranty funds receivable or on deposit	0	0	0	0
20. Electronic data processing equipment and software	0	0	0	0
21. Furniture and equipment, including health care delivery assets (\$0)	0	0	0	0
22. Net adjustment in assets and liabilities due to foreign exchange rates	0	0	0	0
23. Receivables from parent, subsidiaries and affiliates	0	0	0	0
24. Health care (\$21,332,069) and other amounts receivable	29,907,047	8,574,978	21,332,069	8,471,955
25. Aggregate write-ins for other than invested assets	1,122,449	0	1,122,449	753,000
26. Total assets excluding Separate Accounts, Segregated Accounts and Protected Cell Accounts (Lines 12 to 25)	558,907,520	9,303,901	549,603,619	471,712,369
27. From Separate Accounts, Segregated Accounts and Protected Cell Accounts	0	0	0	0
28. Total (Lines 26 and 27)	558,907,520	9,303,901	549,603,619	471,712,369
DETAILS OF WRITE-INS				
1101.				
1102.				
1103.				
1198. Summary of remaining write-ins for Line 11 from overflow page	0	0	0	0
1199. Totals (Lines 1101 through 1103 plus 1198)(Line 11 above)	0	0	0	0
2501. State taxes receivable	1,120,599	0	1,120,599	751,611
2502. Premium taxes recoverable	1,850	0	1,850	1,389
2503.				
2598. Summary of remaining write-ins for Line 25 from overflow page	0	0	0	0
2599. Totals (Lines 2501 through 2503 plus 2598)(Line 25 above)	1,122,449	0	1,122,449	753,000

LIABILITIES, CAPITAL AND SURPLUS

	Current Period			Prior Year
	1 Covered	2 Uncovered	3 Total	4 Total
1. Claims unpaid (less \$ 1,516,651 reinsurance ceded)	106,570,834	6,865,996	113,436,830	61,219,975
2. Accrued medical incentive pool and bonus amounts	25,630,269	0	25,630,269	35,483,241
3. Unpaid claims adjustment expenses	1,265,236	0	1,265,236	914,281
4. Aggregate health policy reserves, including the liability of \$ 29,052,576 for medical loss ratio rebate per the Public Health Service Act	89,446,166	0	89,446,166	86,855,800
5. Aggregate life policy reserves	0	0	0	0
6. Property/casualty unearned premium reserve	0	0	0	0
7. Aggregate health claim reserves	0	0	0	0
8. Premiums received in advance	481,486	0	481,486	1,126,620
9. General expenses due or accrued	543,283	0	543,283	543,281
10.1 Current federal and foreign income tax payable and interest thereon (including \$ 0 on realized gains (losses))	0	0	0	0
10.2 Net deferred tax liability	0	0	0	0
11. Ceded reinsurance premiums payable	0	0	0	0
12. Amounts withheld or retained for the account of others.....	0	0	0	0
13. Remittances and items not allocated	0	0	0	1,422,684
14. Borrowed money (including \$ 0 current) and interest thereon \$ 0 (including \$ 0 current)	0	0	0	0
15. Amounts due to parent, subsidiaries and affiliates	35,048,356	0	35,048,356	14,615,216
16. Derivatives	0	0	0	0
17. Payable for securities	17,887,708	0	17,887,708	1,000,000
18. Payable for securities lending	0	0	0	0
19. Funds held under reinsurance treaties (with \$ 0 authorized reinsurers, \$ 6,653,007 unauthorized reinsurers and \$ 0 certified reinsurers).....	6,653,007	0	6,653,007	5,720,491
20. Reinsurance in unauthorized and certified (\$ 0) companies	0	0	0	0
21. Net adjustments in assets and liabilities due to foreign exchange rates	0	0	0	0
22. Liability for amounts held under uninsured plans	16,557,534	0	16,557,534	12,349,941
23. Aggregate write-ins for other liabilities (including \$ 0 current)	96,337	0	96,337	96,337
24. Total liabilities (Lines 1 to 23)	300,180,216	6,865,996	307,046,212	221,347,867
25. Aggregate write-ins for special surplus funds	XXX	XXX	0	0
26. Common capital stock	XXX	XXX	10	10
27. Preferred capital stock	XXX	XXX	0	0
28. Gross paid in and contributed surplus	XXX	XXX	74,443,448	74,443,448
29. Surplus notes	XXX	XXX	0	0
30. Aggregate write-ins for other than special surplus funds	XXX	XXX	20,744,480	20,744,480
31. Unassigned funds (surplus)	XXX	XXX	147,369,469	155,176,564
32. Less treasury stock, at cost:				
32.1 0 shares common (value included in Line 26 \$ 0)	XXX	XXX	0	0
32.2 0 shares preferred (value included in Line 27 \$ 0)	XXX	XXX	0	0
33. Total capital and surplus (Lines 25 to 31 minus Line 32)	XXX	XXX	242,557,407	250,364,502
34. Total liabilities, capital and surplus (Lines 24 and 33)	XXX	XXX	549,603,619	471,712,369
DETAILS OF WRITE-INS				
2301. Abandoned property liability	96,337	0	96,337	96,337
2302.				
2303.				
2398. Summary of remaining write-ins for Line 23 from overflow page	0	0	0	0
2399. Totals (Lines 2301 through 2303 plus 2398)(Line 23 above)	96,337	0	96,337	96,337
2501.	XXX	XXX		
2502.	XXX	XXX		
2503.	XXX	XXX		
2598. Summary of remaining write-ins for Line 25 from overflow page	XXX	XXX	0	0
2599. Totals (Lines 2501 through 2503 plus 2598)(Line 25 above)	XXX	XXX	0	0
3001. Contingency reserve	XXX	XXX	20,744,480	20,744,480
3002.	XXX	XXX		
3003.	XXX	XXX		
3098. Summary of remaining write-ins for Line 30 from overflow page	XXX	XXX	0	0
3099. Totals (Lines 3001 through 3003 plus 3098)(Line 30 above)	XXX	XXX	20,744,480	20,744,480

STATEMENT OF REVENUE AND EXPENSES

	Current Year To Date		Prior Year To Date	Prior Year Ended December 31
	1 Uncovered	2 Total	3 Total	4 Total
1. Member Months	XXX	324,714	223,389	882,629
2. Net premium income (including \$ 0 non-health premium income)	XXX	371,656,190	242,650,198	1,037,224,009
3. Change in unearned premium reserves and reserve for rate credits	XXX	3,207,271	(4,686,579)	(15,008,082)
4. Fee-for-service (net of \$ 0 medical expenses)	XXX	0	0	
5. Risk revenue	XXX	0	0	
6. Aggregate write-ins for other health care related revenues	XXX	0	0	0
7. Aggregate write-ins for other non-health revenues	XXX	0	0	0
8. Total revenues (Lines 2 to 7)	XXX	374,863,461	237,963,619	1,022,215,927
Hospital and Medical:				
9. Hospital/medical benefits	16,884,999	243,650,777	162,335,475	681,390,200
10. Other professional services	800,303	11,548,389	4,711,472	20,992,807
11. Outside referrals	7,125,886	7,125,886	2,749,452	12,158,560
12. Emergency room and out-of-area	748,288	10,797,802	5,984,534	22,021,997
13. Prescription drugs	0	58,962,563	26,032,511	88,366,902
14. Aggregate write-ins for other hospital and medical	0	0	0	0
15. Incentive pool, withhold adjustments and bonus amounts	0	10,472,673	1,266,691	27,610,218
16. Subtotal (Lines 9 to 15)	25,559,476	342,558,090	203,080,135	852,540,684
Less:				
17. Net reinsurance recoveries	0	3,237,313	1,545,258	6,418,440
18. Total hospital and medical (Lines 16 minus 17)	25,559,476	339,320,777	201,534,877	846,122,244
19. Non-health claims (net)	0	0	0	
20. Claims adjustment expenses, including \$ 5,651,161 cost containment expenses	0	8,080,941	5,119,312	25,717,822
21. General administrative expenses	0	34,550,368	26,474,193	110,209,680
22. Increase in reserves for life and accident and health contracts (including \$ 0 increase in reserves for life only)	0	7,406,676	0	0
23. Total underwriting deductions (Lines 18 through 22)	25,559,476	389,358,762	233,128,382	982,049,746
24. Net underwriting gain or (loss) (Lines 8 minus 23)	XXX	(14,495,301)	4,835,237	40,166,181
25. Net investment income earned	0	4,762,556	3,189,553	15,137,893
26. Net realized capital gains (losses) less capital gains tax of \$ (93,899)	0	(233,822)	(787,723)	(2,844,707)
27. Net investment gains (losses) (Lines 25 plus 26)	0	4,528,734	2,401,830	12,293,186
28. Net gain or (loss) from agents' or premium balances charged off [(amount recovered \$ 0) (amount charged off \$ 0)]	0	0	0	0
29. Aggregate write-ins for other income or expenses	0	0	0	0
30. Net income or (loss) after capital gains tax and before all other federal income taxes (Lines 24 plus 27 plus 28 plus 29)	XXX	(9,966,567)	7,237,067	52,459,367
31. Federal and foreign income taxes incurred	XXX	(2,693,787)	4,674,373	8,746,454
32. Net income (loss) (Lines 30 minus 31)	XXX	(7,272,780)	2,562,694	43,712,913
DETAILS OF WRITE-INS				
0601.	XXX			
0602.	XXX			
0603.	XXX			
0698. Summary of remaining write-ins for Line 6 from overflow page	XXX	0	0	0
0699. Totals (Lines 0601 through 0603 plus 0698)(Line 6 above)	XXX	0	0	0
0701.	XXX			
0702.	XXX			
0703.	XXX			
0798. Summary of remaining write-ins for Line 7 from overflow page	XXX	0	0	0
0799. Totals (Lines 0701 through 0703 plus 0798)(Line 7 above)	XXX	0	0	0
1401.				
1402.				
1403.				
1498. Summary of remaining write-ins for Line 14 from overflow page	0	0	0	0
1499. Totals (Lines 1401 through 1403 plus 1498)(Line 14 above)	0	0	0	0
2901.				
2902.				
2903.				
2998. Summary of remaining write-ins for Line 29 from overflow page	0	0	0	0
2999. Totals (Lines 2901 through 2903 plus 2998)(Line 29 above)	0	0	0	0

STATEMENT OF REVENUE AND EXPENSES (Continued)

	1 Current Year to Date	2 Prior Year to Date	3 Prior Year Ended December 31
CAPITAL AND SURPLUS ACCOUNT			
33. Capital and surplus prior reporting year.....	250,364,502	211,760,078	211,760,078
34. Net income or (loss) from Line 32.....	(7,272,780)	2,562,694	43,712,913
35. Change in valuation basis of aggregate policy and claim reserves.....			0
36. Change in net unrealized capital gains (losses) less capital gains tax of \$ (29,067).....	(109,349)	591,778	1,156,848
37. Change in net unrealized foreign exchange capital gain or (loss).....		0	0
38. Change in net deferred income tax.....	(29,067)	3,644,519	1,321,442
39. Change in nonadmitted assets.....	(395,899)	(147,849)	(7,586,779)
40. Change in unauthorized and certified reinsurance.....	0	0	0
41. Change in treasury stock.....	0	0	0
42. Change in surplus notes.....	0	0	0
43. Cumulative effect of changes in accounting principles.....			0
44. Capital Changes:			
44.1 Paid in.....			0
44.2 Transferred from surplus (Stock Dividend).....	0	0	0
44.3 Transferred to surplus.....			0
45. Surplus adjustments:			
45.1 Paid in.....	0	0	0
45.2 Transferred to capital (Stock Dividend).....			0
45.3 Transferred from capital.....			0
46. Dividends to stockholders.....			0
47. Aggregate write-ins for gains or (losses) in surplus.....	0	0	0
48. Net change in capital & surplus (Lines 34 to 47).....	(7,807,095)	6,651,142	38,604,424
49. Capital and surplus end of reporting period (Line 33 plus 48)	242,557,407	218,411,220	250,364,502
DETAILS OF WRITE-INS			
4701.			
4702.			
4703.			
4798. Summary of remaining write-ins for Line 47 from overflow page.....	0	0	0
4799. Totals (Lines 4701 through 4703 plus 4798)(Line 47 above)	0	0	0

STATEMENT AS OF MARCH 31, 2024 OF THE Coventry Health Care of Missouri, Inc.

CASH FLOW

	1 Current Year To Date	2 Prior Year To Date	3 Prior Year Ended December 31
Cash from Operations			
1. Premiums collected net of reinsurance	337,794,972	326,286,745	1,048,095,410
2. Net investment income	4,358,042	3,028,426	13,712,758
3. Miscellaneous income	0	0	0
4. Total (Lines 1 to 3)	342,153,014	329,315,171	1,061,808,168
5. Benefit and loss related payments	310,641,596	199,560,852	837,136,516
6. Net transfers to Separate Accounts, Segregated Accounts and Protected Cell Accounts			
7. Commissions, expenses paid and aggregate write-ins for deductions	37,515,386	13,979,981	134,994,854
8. Dividends paid to policyholders			
9. Federal and foreign income taxes paid (recovered) net of \$ tax on capital gains (losses)	0	0	8,792,665
10. Total (Lines 5 through 9)	348,156,982	213,540,833	980,924,035
11. Net cash from operations (Line 4 minus Line 10)	(6,003,968)	115,774,338	80,884,133
Cash from Investments			
12. Proceeds from investments sold, matured or repaid:			
12.1 Bonds	32,926,106	13,751,931	66,187,166
12.2 Stocks	0	0	0
12.3 Mortgage loans	10,081	148,461	3,898,926
12.4 Real estate	0	0	0
12.5 Other invested assets	0	0	0
12.6 Net gains or (losses) on cash, cash equivalents and short-term investments	(45)	0	129
12.7 Miscellaneous proceeds	16,887,708	497,122	1,000,000
12.8 Total investment proceeds (Lines 12.1 to 12.7)	49,823,850	14,397,514	71,086,221
13. Cost of investments acquired (long-term only):			
13.1 Bonds	64,704,117	12,925,225	121,156,297
13.2 Stocks	0	0	0
13.3 Mortgage loans	2,029	0	5,807,971
13.4 Real estate	0	0	0
13.5 Other invested assets	0	0	0
13.6 Miscellaneous applications	82,500	0	0
13.7 Total investments acquired (Lines 13.1 to 13.6)	64,788,646	12,925,225	126,964,268
14. Net increase (or decrease) in contract loans and premium notes	0	0	0
15. Net cash from investments (Line 12.8 minus Line 13.7 and Line 14)	(14,964,796)	1,472,289	(55,878,047)
Cash from Financing and Miscellaneous Sources			
16. Cash provided (applied):			
16.1 Surplus notes, capital notes	0	0	0
16.2 Capital and paid in surplus, less treasury stock	0	0	0
16.3 Borrowed funds	0	0	0
16.4 Net deposits on deposit-type contracts and other insurance liabilities	0	0	0
16.5 Dividends to stockholders	0	0	0
16.6 Other cash provided (applied)	19,942,971	(98,029,462)	(3,242,911)
17. Net cash from financing and miscellaneous sources (Line 16.1 through Line 16.4 minus Line 16.5 plus Line 16.6)	19,942,971	(98,029,462)	(3,242,911)
RECONCILIATION OF CASH, CASH EQUIVALENTS AND SHORT-TERM INVESTMENTS			
18. Net change in cash, cash equivalents and short-term investments (Line 11, plus Lines 15 and 17)	(1,025,793)	19,217,165	21,763,175
19. Cash, cash equivalents and short-term investments:			
19.1 Beginning of year	98,850,684	77,087,509	77,087,509
19.2 End of period (Line 18 plus Line 19.1)	97,824,891	96,304,674	98,850,684

Note: Supplemental disclosures of cash flow information for non-cash transactions:

20.0001. Non-cash investment exchanges	0	0	0
--	---	---	---

STATEMENT AS OF MARCH 31, 2024 OF THE Coventry Health Care of Missouri, Inc.

EXHIBIT OF PREMIUMS, ENROLLMENT AND UTILIZATION

	1 Total	Comprehensive (Hospital & Medical)		4 Medicare Supplement	5 Vision Only	6 Dental Only	7 Federal Employees Health Benefits Plan	8 Title XVIII Medicare	9 Title XIX Medicaid	10 Credit A&H	11 Disability Income	12 Long-Term Care	13 Other Health	14 Other Non-Health
		2 Individual	3 Group											
Total Members at end of:														
1. Prior Year	73,492	0	0	0	0	0	0	73,492	0	0	0	0	0	0
2. First Quarter	110,921							110,921						
3. Second Quarter	0													
4. Third Quarter	0													
5. Current Year	0													
6. Current Year Member Months	324,714							324,714						
Total Member Ambulatory Encounters for Period:														
7. Physician	860,384							860,384						
8. Non-Physician	681,197							681,197						
9. Total	1,541,581	0	0	0	0	0	0	1,541,581	0	0	0	0	0	0
10. Hospital Patient Days Incurred	32,943							32,943						
11. Number of Inpatient Admissions	4,570							4,570						
12. Health Premiums Written (a)	374,894,360							374,894,360						
13. Life Premiums Direct	0													
14. Property/Casualty Premiums Written	0													
15. Health Premiums Earned.....	378,101,631							378,101,631						
16. Property/Casualty Premiums Earned	0													
17. Amount Paid for Provision of Health Care Services.....	312,947,250	(20)	(492)					312,947,762						
18. Amount Incurred for Provision of Health Care Services	342,558,090	(20)	(492)					342,558,602						

(a) For health premiums written: amount of Medicare Title XVIII exempt from state taxes or fees \$ 374,894,360

UNDERWRITING AND INVESTMENT EXHIBIT

ANALYSIS OF CLAIMS UNPAID - PRIOR YEAR - NET OF REINSURANCE

Line of Business	Claims Paid Year to Date		Liability End of Current Quarter		5 Claims Incurred in Prior Years (Columns 1 + 3)	6 Estimated Claim Reserve and Claim Liability December 31 of Prior Year
	1 On Claims Incurred Prior to January 1 of Current Year	2 On Claims Incurred During the Year	3 On Claims Unpaid Dec. 31 of Prior Year	4 On Claims Incurred During the Year		
1. Comprehensive (hospital and medical) individual	(20)	0	0	0	(20)	0
2. Comprehensive (hospital and medical) group	(492)	0	0	0	(492)	0
3. Medicare Supplement	0	0	0	0	0	0
4. Vision only	0	0	0	0	0	0
5. Dental only	0	0	0	0	0	0
6. Federal Employees Health Benefits Plan	0	0	0	0	0	0
7. Title XVIII - Medicare	52,145,443	238,171,020	12,045,860	101,390,970	64,191,303	61,219,975
8. Title XIX - Medicaid	0	0	0	0	0	0
9. Credit A&H	0	0	0	0	0	0
10. Disability Income	0	0	0	0	0	0
11. Long-term care	0	0	0	0	0	0
12. Other health	0	0	0	0	0	0
13. Health subtotal (Lines 1 to 12)	52,144,931	238,171,020	12,045,860	101,390,970	64,190,791	61,219,975
14. Health care receivables (a)	0	29,907,047	0	0	0	16,222,345
15. Other non-health	0	0	0	0	0	0
16. Medical incentive pools and bonus amounts	19,839,300	486,345	17,480,683	8,149,586	37,319,983	35,483,241
17. Totals (Lines 13 - 14 + 15 + 16)	71,984,231	208,750,318	29,526,543	109,540,556	101,510,774	80,480,871

(a) Excludes \$ loans or advances to providers not yet expensed.

NOTES TO FINANCIAL STATEMENTS

1. Summary of Significant Accounting Policies and Going Concern

A. Accounting Practices

The accompanying statutory financial statements of Coventry Health Care of Missouri, Inc. ("the Company"), indirectly a wholly-owned subsidiary of CVS Health Corporation ("CVS Health"), have been prepared in conformity with accounting practices prescribed or permitted by the Missouri Department of Commerce and Insurance ("Missouri Department") ("Missouri Accounting Practices"). The Missouri Department recognizes only statutory accounting practices prescribed or permitted by the State of Missouri for determining and reporting the financial condition and results of operations of an insurance company, which include accounting practices and procedures adopted by the National Association of Insurance Commissioners' ("NAIC") *Accounting Practices and Procedures Manual* ("NAIC SAP").

A reconciliation of the Company's net income and surplus between NAIC SAP and practices prescribed and permitted by the State of Missouri for the periods ended March 31, 2024 and December 31, 2023 is as follows:

	SSAP #	F/S Page	F/S Line #	2024	2023
NET INCOME					
(1) Coventry Health Care of Missouri, Inc.'s state basis (Page 4, Line 32, Columns 2 & 4)	XXX	XXX	XXX	\$ (7,272,780)	\$ 43,712,913
(2) State Prescribed Practices that are an increase/(decrease) from NAIC SAP:					
(3) State Permitted Practices that are an increase/(decrease) from NAIC SAP:					
(4) Net Income NAIC SAP (1-2-3=4)	XXX	XXX	XXX	\$ (7,272,780)	\$ 43,712,913
SURPLUS					
(5) Coventry Health Care of Missouri, Inc.'s state basis (Page 3, Line 33, Columns 3 & 4)	XXX	XXX	XXX	\$ 242,557,407	\$ 250,364,502
(6) State Prescribed Practices that are an increase/(decrease) from NAIC SAP:					
(7) State Permitted Practices that are an increase/(decrease) from NAIC SAP:					
(8) Statutory Surplus NAIC SAP (5-6-7=8)	XXX	XXX	XXX	\$ 242,557,407	\$ 250,364,502

B. Use of Estimates in the Preparation of the Financial Statements

The preparation of these financial statements in conformity with Missouri Accounting Practices requires management to make estimates and assumptions that affect the reported amounts of assets and liabilities and revenues and expenses. Actual results could differ from those estimates.

C. Accounting Policies

The Company applies the following significant accounting policies:

(1) No significant change.

(2) Bonds

Bonds, which include special deposits, are carried at amortized cost except for those bonds with an NAIC designation of 3 through 6, which are carried at the lower of amortized cost or fair value. The amount carried at fair value is not material to the financial statements. Bond premiums and discounts are amortized using the scientific interest method. When quoted prices in active markets for identical assets are available, the Company uses these quoted market prices to determine the fair value of bonds. This is used primarily for U.S. government securities. In other cases where a quoted market price for identical assets in an active market is either not available or not observable, the Company estimates fair values using valuation methodologies based on available and observable market information or by using a matrix pricing model. If quoted market prices are not available, the Company determines fair value using broker quotes or an internal analysis of each investment's financial performance and cash flow projections. The Company had no investments where fair value was determined using broker quotes or an internal analysis of financial performance and cash flow projections at March 31, 2024. Bonds include all investments whose maturity is greater than one year when purchased. All adjustments between amortized cost and carrying value are reflected in unrealized capital gains and losses and are reported as direct adjustments to surplus.

Bonds are recorded as purchases or sales on the trade date.

NOTES TO FINANCIAL STATEMENTS

The Company periodically reviews its bonds to determine whether a decline in fair value below the carrying value is other-than-temporary. For bonds, other than loan-backed and structured securities ("LB&SS") discussed in Note 1C. (6) below, an other-than-temporary impairment ("OTTI") shall be recorded if it is probable that the Company will be unable to collect all amounts due according to the contractual terms in effect at the date of acquisition. Declines deemed to be OTTI in the cost basis are recognized as realized capital losses. Yield-related impairments are deemed other-than-temporary when the Company intends to sell an investment at the reporting date before recovery of the cost of the investment.

The Company analyzes all relevant facts and circumstances for each investment when performing its analysis to determine whether an OTTI exists. Among the factors considered in evaluating whether a decline is other-than-temporary, management considers whether the decline in fair value results from a change in the quality of the investment security itself, whether the decline results from a downward movement in the market as a whole, the prospects for realizing the carrying value of the bond based on the investee's current and short-term prospects for recovery and other factors. The risks inherent in assessing the impairment of an investment include the risk that market factors may differ from the Company's expectations and the risk that facts and circumstances factored into its assessment may change with the passage of time. Unexpected changes to market factors and circumstances that were not present in past reporting periods may result in a current period decision to sell securities that were not other-than-temporarily-impaired in prior reporting periods.

The Company had no Securities Valuation Office-identified investments that are being reported at a different measurement method from the prior year annual statement.

(3) through (5): No significant change.

(6) Loan-Backed and Structured Securities

LB&SS are carried at amortized cost adjusted for unamortized premiums and discounts and are accounted for using the retrospective adjustment method. Premiums and discounts on loan-backed and structured securities are amortized using the scientific method over the estimated remaining term of the securities, adjusted for anticipated prepayments.

For LB&SS, the Company records OTTI when the fair value of the loan-backed or structured security is less than the amortized cost basis at the balance sheet date and (1) the Company intends to sell the investment, or (2) the Company does not have the intent and ability to retain the investment for the time sufficient to recover the amortized cost basis, or (3) the Company does not expect to recover the entire amortized cost basis of the security, even if it does not intend to sell the security and has the intent and ability to hold. If it is determined an OTTI has occurred because of (1) or (2), the amount of the OTTI is equal to the difference between the amortized cost and the fair value of the security at the Balance Sheet date and this difference is recorded as a realized capital loss. If it is determined an OTTI has occurred because of (3), the amount of the OTTI is equal to the difference between the amortized cost and the present value of cash flows expected to be collected, discounted at the loan-backed or structured security's effective interest rate and this difference is also accounted for as a realized capital loss.

(7) through (19): No significant change.

D. Going Concern

As of May 10, 2024, management evaluated whether there are conditions or events, considered in the aggregate, that raise substantial doubt about the Company's ability to continue as a going concern and management has determined that it is not probable that the Company will be unable to meet its obligations as they become due within one year after the financial statements are available to be issued. Management will continuously evaluate the Company's ability to continue as a going concern and will take appropriate action and will make appropriate disclosures if there is any change in any condition or events that would raise substantial doubt about the Company's ability to continue as a going concern.

2. Accounting Changes and Corrections of Errors

The Company did not have any accounting changes or corrections of errors in the period ended March 31, 2024.

3. Business Combinations and Goodwill

No significant change.

4. Discontinued Operations

No significant change.

5. Investments

A. through C.: No significant change.

D. Loan-Backed Securities

(1) Prepayment assumptions for single class and multi-class mortgage-backed/loan-backed securities were obtained from industry market sources.

NOTES TO FINANCIAL STATEMENTS

(2) The Company did not recognize any OTTI on loan-backed and structured securities in which the Company had the (1) intent to sell, (2) did not have the intent and ability to retain for a period of time sufficient to recover the amortized cost basis or (3) present value of cash flows expected to be collected is less than the amortized cost basis of the securities in accordance with Statements of Statutory Accounting Principles ("SSAP") No. 43R, Loan-Backed and Structured Securities ("SSAP No. 43R") at March 31, 2024.

(3) The Company had no recognized OTTI on loan-backed and structured securities currently held, in which the present value of cash flows expected to be collected is less than the amortized cost basis at the reporting date March 31, 2024.

(4) The Company's unrealized loss position on loan-backed and structured securities held by the Company at March 31, 2024 is as follows:

a. The aggregate amount of unrealized losses:		
1. Less than 12 Months	\$	(11,835)
2. 12 Months or Longer		(537,241)
b. The aggregate related fair value of securities with unrealized losses:		
1. Less than 12 Months	\$	7,988,108
2. 12 Months or Longer		3,027,013

(5) The Company has reviewed the loan-backed and structured securities in accordance with SSAP No. 43R in the table above and has concluded that these are performing assets generating investment income to support the needs of the business. Furthermore, the Company has no intention to sell the securities at March 31, 2024 before their cost can be recovered and does have the intent and ability to retain the securities for the time sufficient to recover the amortized cost basis; therefore, no OTTI write-down to fair value was determined to have occurred on these securities.

E. Dollar Repurchase Agreements and/or Securities Lending Transactions

(1) and (2): No significant change.

(3) Neither the Company nor its agent has accepted collateral that is permitted by contract or custom to sell or repledge as of March 31, 2024.

(4) through (7): No significant change.

F. The Company did not have any repurchase agreements transactions accounted for as secured borrowing at March 31, 2024.

G. The Company did not have any reverse repurchase agreements transactions accounted for as secured borrowing at March 31, 2024.

H. The Company did not have any repurchase agreements transactions accounted for as a sale at March 31, 2024.

I. The Company did not have any reverse repurchase agreements transactions accounted for as a sale at March 31, 2024.

J. through L.: No significant change.

M. The Company did not have any working capital finance investments at March 31, 2024.

N. The Company did not have any offsetting and netting of derivative, repurchase and reverse repurchase, and securities borrowing and securities lending assets or liabilities at March 31, 2024.

O. through Q.: No significant change.

R. The Company did not participate in any Qualified Cash Pools at March 31, 2024.

6. Joint Ventures, Partnerships and Limited Liability Companies

No significant change.

7. Investment Income

No significant change.

8. Derivative Instruments

The Company did not have any derivative instruments at March 31, 2024.

9. Income Taxes

No significant change.

NOTES TO FINANCIAL STATEMENTS

10. Information Concerning Parent, Subsidiaries, Affiliates and Other Related Parties

No significant change.

11. Debt

A. The Company did not have any items related to debt, including capital notes at March 31, 2024.

B. The Company did not have any Federal Home Loan Bank agreements at March 31, 2024.

12. Retirement Plans, Deferred Compensation, Postemployment Benefits and Compensated Absences and Other Postretirement Benefit Plans

The Company did not have a retirement plan, deferred compensation plan or other postretirement benefit plan at March 31, 2024.

13. Capital and Surplus, Shareholders' Dividend Restrictions and Quasi-Reorganizations

No significant change.

14. Liabilities, Contingencies and Assessments

No significant change.

15. Leases

No significant change.

16. Information About Financial Instruments with Off-Balance Sheet Risk and Financial Instruments with Concentrations of Credit Risk

No significant change.

17. Sale, Transfer and Servicing of Financial Assets and Extinguishments of Liabilities

A. Transfers of Receivables Reported as Sales

No significant change.

B. Transfer and Servicing of Financial Assets

(1) No significant change.

(2) and (3): The Company did not have any servicing assets or liabilities at March 31, 2024.

(4) The Company did not have any securitized financial assets at March 31, 2024.

(5) through (7): No significant change.

C. Wash Sales

(1) In the course of the Company's asset management, securities are sold and reacquired within 30 days of the sale date to enhance the Company's yield on its investment portfolio.

(2) The Company had no securities sold during the quarter ended March 31, 2024 and reacquired within 30 days of the sale date.

18. Gain or Loss to the Reporting Entity from Uninsured Plans and the Uninsured Portion of Partially Insured Plans

No significant change.

19. Direct Premium Written/Produced by Managing General Agents/Third Party Administrators

No significant change.

20. Fair Value Measurements

A.

(1) The Company had no material assets and liabilities that are measured and reported at fair value in the financial statements as of March 31, 2024.

NOTES TO FINANCIAL STATEMENTS

- (2) There were no material realized and unrealized capital gains, purchases, sales, settlements, or transfers into or out of the Company's Level 3 financial assets during 2024.
- (3) Transfers in and out of all levels are recognized at the end of the reporting period of which the transfer occurred.
- (4) The Company's fair value measurement valuation techniques are described in B. below.
- (5) The Company did not have any derivative instruments at March 31, 2024.

B. The fair values of these instruments are based on valuations that include inputs that can be classified within one of three levels of a hierarchy. The following are the levels of the hierarchy and a brief description of the type of valuation information ("inputs") that qualifies a financial asset or liability for each level:

Level 1 - Unadjusted quoted prices for identical assets or liabilities in active markets.

Level 2 - Inputs other than Level 1 that are based on observable market data. These include: quoted prices for similar assets in active markets, quoted prices for identical assets in inactive markets, inputs that are observable that are not prices (such as interest rates and credit risks) and inputs that are derived from or corroborated by observable markets.

Level 3 - Developed from unobservable data, reflecting the Company's own assumptions.

Financial assets and liabilities are classified based upon the lowest level of input that is significant to the valuation. When quoted prices in active markets for identical assets and liabilities are available, the Company uses these quoted market prices to determine the fair value of financial assets and liabilities and classifies these assets and liabilities as Level 1. In other cases where a quoted market price for identical assets and liabilities in an active market is either not available or not observable, the Company estimates fair value using valuation methodologies based on available and observable market information or by using a matrix pricing model. These financial assets and liabilities would then be classified as Level 2. If quoted market prices are not available, the Company determines fair value using broker quotes or an internal analysis of each investment's financial performance and cash flow projections. Thus, financial assets and liabilities may be classified in Level 3 even though there may be some significant inputs that may be observable.

C. The carrying values and estimated fair values of the Company's financial instruments at March 31, 2024 were as follows:

Type of Financial Instrument	Aggregate Fair Value	Admitted Assets	(Level 1)	(Level 2)	(Level 3)	Net Asset Value (NAV)	Not Practicable (Carrying Value)
Bonds, short-term investments, and cash equivalents	\$400,124,128	\$404,618,453	\$ 47,363,902	\$352,760,226	\$ —	\$ —	\$ —
Mortgage loans	5,805,681	5,793,291	—	—	5,805,681	—	—

In evaluating the Company's management of interest rate and liquidity risk and currency exposures, the fair values of all assets and liabilities should be taken into consideration, not only those presented above.

- D. The Company did not have any financial instruments where it was not practicable to estimate the fair value.
- E. The Company has not elected to use the net asset value practical expedient to fair value to measure its investments.

21. Other Items

No significant change.

22. Events Subsequent

A. Type I - Recognized Subsequent Events

Subsequent events have been considered through May 10, 2024 for the statutory statement issued on May 10, 2024.

The Company had no known reportable recognized subsequent events.

B. Type II - Non-Recognized Subsequent Events

Subsequent events have been considered through May 10, 2024 for the statutory statement issued on May 10, 2024.

The Company had no known reportable non-recognized subsequent events.

23. Reinsurance

No significant change.

24. Retrospectively Rated Contracts and Contracts Subject to Redetermination

A. through D.: No significant change.

NOTES TO FINANCIAL STATEMENTS

E. Risk Sharing Provisions of the Affordable Care Act

(1) Did the reporting entity write accident and health insurance premium which is subject to the ACA risk sharing provisions (YES/NO)? Yes [] No [X]

(2) through (5): Not applicable.

25. Change in Incurred Claims and Claim Adjustment Expenses

A. Reserves as of December 31, 2023 were \$97,617,497. As of March 31, 2024, \$72,898,512 has been paid for incurred claims and claim adjustment expenses attributable to insured events of prior years. Reserves remaining for prior years are now \$29,526,543 as a result of re-estimation of unpaid claims and claim adjustment expenses. Therefore, there has been a \$4,807,558 unfavorable prior-year development since December 31, 2023 to March 31, 2024, primarily related to the Company's Medicare line of business. The increase is generally the result of ongoing analysis of recent loss development trends. Original estimates are increased or decreased, as additional information becomes known regarding individual claims. Included in this increase, the Company experienced \$4,808,070 of unfavorable prior year claim development on retrospectively rated policies. However, the business to which it relates is subject to premium adjustments.

B. There has been no significant change in the Company's methodologies and assumptions used in calculating the liability for unpaid losses and loss adjustment expenses.

26. Intercompany Pooling Arrangements

No significant change.

27. Structured Settlements

No significant change.

28. Health Care Receivables

No significant change.

29. Participating Policies

No significant change.

30. Premium Deficiency Reserves

	<u>March 31, 2024</u>
1. Liability carried for premium deficiency reserves ("PDR")	\$7,406,676
2. Date of the most recent evaluation of this liability	3/31/2024
3. Was anticipated investment income utilized in the calculation?	No

The Company recorded PDR of \$7,406,676 relative to its Medicare business.

31. Anticipated Salvage and Subrogation

No significant change.

GENERAL INTERROGATORIES

PART 1 - COMMON INTERROGATORIES

GENERAL

- 1.1 Did the reporting entity experience any material transactions requiring the filing of Disclosure of Material Transactions with the State of Domicile, as required by the Model Act? Yes [] No [X]
- 1.2 If yes, has the report been filed with the domiciliary state? Yes [] No []
- 2.1 Has any change been made during the year of this statement in the charter, by-laws, articles of incorporation, or deed of settlement of the reporting entity? Yes [] No [X]
- 2.2 If yes, date of change:
- 3.1 Is the reporting entity a member of an Insurance Holding Company System consisting of two or more affiliated persons, one or more of which is an insurer? Yes [X] No []
If yes, complete Schedule Y, Parts 1 and 1A.
- 3.2 Have there been any substantial changes in the organizational chart since the prior quarter end? Yes [X] No []
- 3.3 If the response to 3.2 is yes, provide a brief description of those changes.
Effective January 1, 2024, Coventry Health Plan of Florida, Inc. merged into Aetna Health Inc. (FL). Effective February 16, 2024, Florida Health Plan Administrators, LLC acquired Hella Group LLC, a New York limited liability company. Hella Group LLC owns the two following subsidiaries: Audomo Insurance Services LLC, a Delaware limited liability company Hella Media LLC, a Delaware limited liability company. Effective March 5, 2024, Spinnaker Bidco Limited was dissolved. Effective March 5, 2024, PT Aetna Global Benefits Indonesia became wholly owned by Aetna Global Benefits (Bermuda) Limited. Effective March 14, 2024, Aetna Health Insurance Company of Europe DAC changed its name to Aetna Health Company of Europe DAC. Effective March 19, 2024, Aetna Holdco (UK) Limited was dissolved. Effective March 19, 2024, Goodhealth Worldwide (Global) Limited merged with Aetna Global Benefits (Bermuda) Limited. Effective March 26, 2024, Aetna Global Holdings Limited has been dissolved. Effective December 8, 2023, Aetna (Beijing) Enterprise Management Services Co. Ltd was dissolved. Effective April 1, 2024, Texas Health + Aetna Health Insurance Company merged into Aetna Life Insurance Company. Effective on April 1, 2024, Texas Health + Aetna Health Plan Inc. merged into Aetna Health Inc. (Texas).
- 3.4 Is the reporting entity publicly traded or a member of a publicly traded group? Yes [X] No []
- 3.5 If the response to 3.4 is yes, provide the CIK (Central Index Key) code issued by the SEC for the entity/group. 0000064803
- 4.1 Has the reporting entity been a party to a merger or consolidation during the period covered by this statement? Yes [] No [X]
- 4.2 If yes, provide the name of the entity, NAIC Company Code, and state of domicile (use two letter state abbreviation) for any entity that has ceased to exist as a result of the merger or consolidation.
- | 1
Name of Entity | 2
NAIC Company Code | 3
State of Domicile |
|---------------------|------------------------|------------------------|
| | | |
5. If the reporting entity is subject to a management agreement, including third-party administrator(s), managing general agent(s), attorney-in-fact, or similar agreement, have there been any significant changes regarding the terms of the agreement or principals involved? Yes [] No [X] N/A []
If yes, attach an explanation.
.....
- 6.1 State as of what date the latest financial examination of the reporting entity was made or is being made. 12/31/2020
- 6.2 State the as of date that the latest financial examination report became available from either the state of domicile or the reporting entity. This date should be the date of the examined balance sheet and not the date the report was completed or released. 12/31/2020
- 6.3 State as of what date the latest financial examination report became available to other states or the public from either the state of domicile or the reporting entity. This is the release date or completion date of the examination report and not the date of the examination (balance sheet date). 06/17/2022
- 6.4 By what department or departments?
Missouri Department of Commerce & Insurance
- 6.5 Have all financial statement adjustments within the latest financial examination report been accounted for in a subsequent financial statement filed with Departments? Yes [] No [] N/A [X]
- 6.6 Have all of the recommendations within the latest financial examination report been complied with? Yes [] No [] N/A [X]
- 7.1 Has this reporting entity had any Certificates of Authority, licenses or registrations (including corporate registration, if applicable) suspended or revoked by any governmental entity during the reporting period? Yes [] No [X]
- 7.2 If yes, give full information:
.....
- 8.1 Is the company a subsidiary of a bank holding company regulated by the Federal Reserve Board? Yes [] No [X]
- 8.2 If response to 8.1 is yes, please identify the name of the bank holding company.
.....
- 8.3 Is the company affiliated with one or more banks, thrifts or securities firms? Yes [] No [X]
- 8.4 If response to 8.3 is yes, please provide below the names and location (city and state of the main office) of any affiliates regulated by a federal regulatory services agency [i.e. the Federal Reserve Board (FRB), the Office of the Comptroller of the Currency (OCC), the Federal Deposit Insurance Corporation (FDIC) and the Securities Exchange Commission (SEC)] and identify the affiliate's primary federal regulator.

1 Affiliate Name	2 Location (City, State)	3 FRB	4 OCC	5 FDIC	6 SEC
.....

GENERAL INTERROGATORIES

- 9.1 Are the senior officers (principal executive officer, principal financial officer, principal accounting officer or controller, or persons performing similar functions) of the reporting entity subject to a code of ethics, which includes the following standards? Yes [] No []
 (a) Honest and ethical conduct, including the ethical handling of actual or apparent conflicts of interest between personal and professional relationships;
 (b) Full, fair, accurate, timely and understandable disclosure in the periodic reports required to be filed by the reporting entity;
 (c) Compliance with applicable governmental laws, rules and regulations;
 (d) The prompt internal reporting of violations to an appropriate person or persons identified in the code; and
 (e) Accountability for adherence to the code.
- 9.11 If the response to 9.1 is No, please explain:

- 9.2 Has the code of ethics for senior managers been amended? Yes [] No []
- 9.21 If the response to 9.2 is Yes, provide information related to amendment(s).
 Added "Responsible Use of Technology" as a new section and made minor updates to the "Non-discrimination, harassment, retaliation" section.
- 9.3 Have any provisions of the code of ethics been waived for any of the specified officers? Yes [] No []
- 9.31 If the response to 9.3 is Yes, provide the nature of any waiver(s).

FINANCIAL

- 10.1 Does the reporting entity report any amounts due from parent, subsidiaries or affiliates on Page 2 of this statement? Yes [] No []
- 10.2 If yes, indicate any amounts receivable from parent included in the Page 2 amount: \$

INVESTMENT

- 11.1 Were any of the stocks, bonds, or other assets of the reporting entity loaned, placed under option agreement, or otherwise made available for use by another person? (Exclude securities under securities lending agreements.) Yes [] No []
- 11.2 If yes, give full and complete information relating thereto:

12. Amount of real estate and mortgages held in other invested assets in Schedule BA: \$ 0
13. Amount of real estate and mortgages held in short-term investments: \$ 0
- 14.1 Does the reporting entity have any investments in parent, subsidiaries and affiliates? Yes [] No []
- 14.2 If yes, please complete the following:

	1 Prior Year-End Book/Adjusted Carrying Value	2 Current Quarter Book/Adjusted Carrying Value
14.21 Bonds	\$ 0	\$ 0
14.22 Preferred Stock	\$ 0	\$ 0
14.23 Common Stock	\$ 0	\$ 0
14.24 Short-Term Investments	\$ 0	\$ 0
14.25 Mortgage Loans on Real Estate	\$ 0	\$ 0
14.26 All Other	\$ 9,143,798	\$ 9,380,553
14.27 Total Investment in Parent, Subsidiaries and Affiliates (Subtotal Lines 14.21 to 14.26)	\$ 9,143,798	\$ 9,380,553
14.28 Total Investment in Parent included in Lines 14.21 to 14.26 above	\$ 0	\$ 0

- 15.1 Has the reporting entity entered into any hedging transactions reported on Schedule DB? Yes [] No []
- 15.2 If yes, has a comprehensive description of the hedging program been made available to the domiciliary state? Yes [] No [] N/A []
 If no, attach a description with this statement.

16. For the reporting entity's security lending program, state the amount of the following as of the current statement date:
- 16.1 Total fair value of reinvested collateral assets reported on Schedule DL, Parts 1 and 2. \$ 0
- 16.2 Total book/adjusted carrying value of reinvested collateral assets reported on Schedule DL, Parts 1 and 2 \$ 0
- 16.3 Total payable for securities lending reported on the liability page. \$ 0

GENERAL INTERROGATORIES

17. Excluding items in Schedule E - Part 3 - Special Deposits, real estate, mortgage loans and investments held physically in the reporting entity's offices, vaults or safety deposit boxes, were all stocks, bonds and other securities, owned throughout the current year held pursuant to a custodial agreement with a qualified bank or trust company in accordance with Section 1, III - General Examination Considerations, F. Outsourcing of Critical Functions, Custodial or Safekeeping Agreements of the NAIC Financial Condition Examiners Handbook? Yes [X] No []
- 17.1 For all agreements that comply with the requirements of the NAIC Financial Condition Examiners Handbook, complete the following:

1 Name of Custodian(s)	2 Custodian Address
State Street Bank and Trust Company	State Street Financial Center; One Lincoln Street; Boston, MA 02111-2900

- 17.2 For all agreements that do not comply with the requirements of the NAIC Financial Condition Examiners Handbook, provide the name, location and a complete explanation:

1 Name(s)	2 Location(s)	3 Complete Explanation(s)
.....

- 17.3 Have there been any changes, including name changes, in the custodian(s) identified in 17.1 during the current quarter? Yes [] No [X]
- 17.4 If yes, give full information relating thereto:

1 Old Custodian	2 New Custodian	3 Date of Change	4 Reason
.....

- 17.5 Investment management – Identify all investment advisors, investment managers, broker/dealers, including individuals that have the authority to make investment decisions on behalf of the reporting entity. For assets that are managed internally by employees of the reporting entity, note as such. ["...that have access to the investment accounts"; "...handle securities"]

1 Name of Firm or Individual	2 Affiliation
Derek S. Blunt as Senior Investment Officer	A.....

- 17.5097 For those firms/individuals listed in the table for Question 17.5, do any firms/individuals unaffiliated with the reporting entity (i.e. designated with a "U") manage more than 10% of the reporting entity's invested assets?..... Yes [] No [X]

- 17.5098 For firms/individuals unaffiliated with the reporting entity (i.e. designated with a "U") listed in the table for Question 17.5, does the total assets under management aggregate to more than 50% of the reporting entity's invested assets?..... Yes [] No [X]

- 17.6 For those firms or individuals listed in the table for 17.5 with an affiliation code of "A" (affiliated) or "U" (unaffiliated), provide the information for the table below.

1	2	3	4	5
Central Registration Depository Number	Name of Firm or Individual	Legal Entity Identifier (LEI)	Registered With	Investment Management Agreement (IMA) Filed
N/A	Derek S. Blunt	N/A	Not registered	NO.....

- 18.1 Have all the filing requirements of the Purposes and Procedures Manual of the NAIC Investment Analysis Office been followed? Yes [X] No []
- 18.2 If no, list exceptions:

19. By self-designating 5GI securities, the reporting entity is certifying the following elements for each self-designated 5GI security:
- a. Documentation necessary to permit a full credit analysis of the security does not exist or an NAIC CRP credit rating for an FE or PL security is not available.
 - b. Issuer or obligor is current on all contracted interest and principal payments.
 - c. The insurer has an actual expectation of ultimate payment of all contracted interest and principal.
- Has the reporting entity self-designated 5GI securities? Yes [] No [X]

20. By self-designating PLGI securities, the reporting entity is certifying the following elements of each self-designated PLGI security:
- a. The security was purchased prior to January 1, 2018.
 - b. The reporting entity is holding capital commensurate with the NAIC Designation reported for the security.
 - c. The NAIC Designation was derived from the credit rating assigned by an NAIC CRP in its legal capacity as a NRSRO which is shown on a current private letter rating held by the insurer and available for examination by state insurance regulators.
 - d. The reporting entity is not permitted to share this credit rating of the PL security with the SVO.
- Has the reporting entity self-designated PLGI securities? Yes [] No [X]

21. By assigning FE to a Schedule BA non-registered private fund, the reporting entity is certifying the following elements of each self-designated FE fund:
- a. The shares were purchased prior to January 1, 2019.
 - b. The reporting entity is holding capital commensurate with the NAIC Designation reported for the security.
 - c. The security had a public credit rating(s) with annual surveillance assigned by an NAIC CRP in its legal capacity as an NRSRO prior to January 1, 2019.
 - d. The fund only or predominantly holds bonds in its portfolio.
 - e. The current reported NAIC Designation was derived from the public credit rating(s) with annual surveillance assigned by an NAIC CRP in its legal capacity as an NRSRO.
 - f. The public credit rating(s) with annual surveillance assigned by an NAIC CRP has not lapsed.
- Has the reporting entity assigned FE to Schedule BA non-registered private funds that complied with the above criteria? Yes [] No [X]

GENERAL INTERROGATORIES

PART 2 - HEALTH

1. Operating Percentages:
- 1.1 A&H loss percent94.0 %
 - 1.2 A&H cost containment percent 1.5 %
 - 1.3 A&H expense percent excluding cost containment expenses 9.9 %
- 2.1 Do you act as a custodian for health savings accounts? Yes [] No [X]
- 2.2 If yes, please provide the amount of custodial funds held as of the reporting date \$.....
- 2.3 Do you act as an administrator for health savings accounts? Yes [] No [X]
- 2.4 If yes, please provide the balance of the funds administered as of the reporting date \$.....
3. Is the reporting entity licensed or chartered, registered, qualified, eligible or writing business in at least two states? Yes [X] No []
- 3.1 If no, does the reporting entity assume reinsurance business that covers risks residing in at least one state other than the state of domicile of the reporting entity? Yes [] No []

SCHEDULE S - CEDED REINSURANCE

Showing All New Reinsurance Treaties - Current Year to Date

1 NAIC Company Code	2 ID Number	3 Effective Date	4 Name of Reinsurer	5 Domiciliary Jurisdiction	6 Type of Reinsurance Ceded	7 Type of Business Ceded	8 Type of Reinsurer	9 Certified Reinsurer Rating (1 through 6)	10 Effective Date of Certified Reinsurer Rating
NONE									

SCHEDULE T - PREMIUMS AND OTHER CONSIDERATIONS

Current Year to Date - Allocated by States and Territories

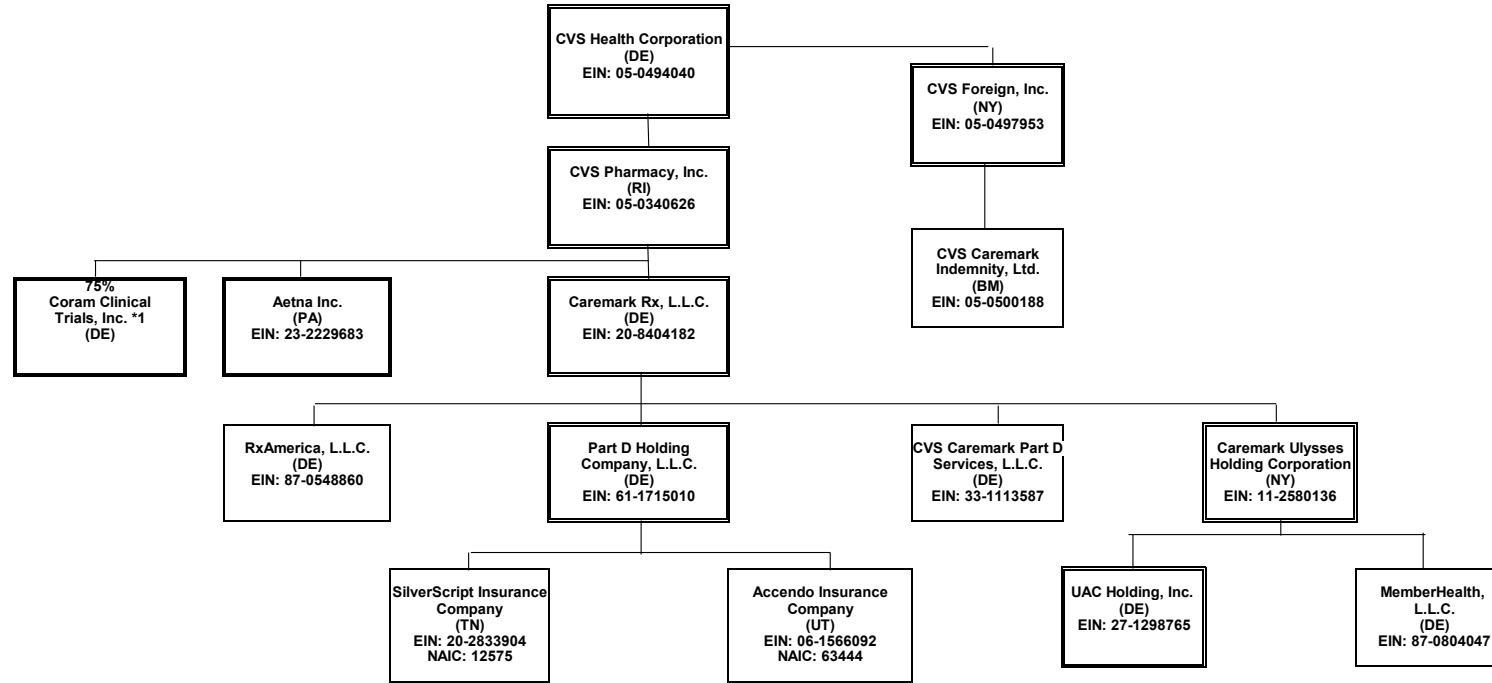
States, etc.	1 Active Status (a)	Direct Business Only									
		2 Accident and Health Premiums	3 Medicare Title XVIII	4 Medicaid Title XIX	5 CHIP Title XXI	6 Federal Employees Health Benefits Program Premiums	7 Life and Annuity Premiums & Other Considerations	8 Property/Casualty Premiums	9 Total Columns 2 Through 8	10 Deposit-Type Contracts	
1. Alabama	AL	N								0	
2. Alaska	AK	N								0	
3. Arizona	AZ	N								0	
4. Arkansas	AR	L	22,999,513							22,999,513	
5. California	CA	N								0	
6. Colorado	CO	N								0	
7. Connecticut	CT	N								0	
8. Delaware	DE	N								0	
9. District of Columbia	DC	N								0	
10. Florida	FL	N								0	
11. Georgia	GA	N								0	
12. Hawaii	HI	N								0	
13. Idaho	ID	N								0	
14. Illinois	IL	L	34,386,439							34,386,439	
15. Indiana	IN	N								0	
16. Iowa	IA	N								0	
17. Kansas	KS	L	54,873,057							54,873,057	
18. Kentucky	KY	N								0	
19. Louisiana	LA	N								0	
20. Maine	ME	N								0	
21. Maryland	MD	N								0	
22. Massachusetts	MA	N								0	
23. Michigan	MI	N								0	
24. Minnesota	MN	N								0	
25. Mississippi	MS	N								0	
26. Missouri	MO	L	258,575,094							258,575,094	
27. Montana	MT	N								0	
28. Nebraska	NE	N								0	
29. Nevada	NV	N								0	
30. New Hampshire	NH	N								0	
31. New Jersey	NJ	N								0	
32. New Mexico	NM	N								0	
33. New York	NY	N								0	
34. North Carolina	NC	N								0	
35. North Dakota	ND	N								0	
36. Ohio	OH	N								0	
37. Oklahoma	OK	L	4,060,257							4,060,257	
38. Oregon	OR	N								0	
39. Pennsylvania	PA	N								0	
40. Rhode Island	RI	N								0	
41. South Carolina	SC	N								0	
42. South Dakota	SD	N								0	
43. Tennessee	TN	N								0	
44. Texas	TX	N								0	
45. Utah	UT	N								0	
46. Vermont	VT	N								0	
47. Virginia	VA	N								0	
48. Washington	WA	N								0	
49. West Virginia	WV	N								0	
50. Wisconsin	WI	N								0	
51. Wyoming	WY	N								0	
52. American Samoa	AS	N								0	
53. Guam	GU	N								0	
54. Puerto Rico	PR	N								0	
55. U.S. Virgin Islands	VI	N								0	
56. Northern Mariana Islands	MP	N								0	
57. Canada	CAN	N								0	
58. Aggregate Other Aliens	OT	XXX	0	0	0	0	0	0	0	0	0
59. Subtotal	XXX	0	374,894,360	0	0	0	0	0	0	374,894,360	0
60. Reporting Entity Contributions for Employee Benefit Plans	XXX									0	
61. Totals (Direct Business)	XXX	0	374,894,360	0	0	0	0	0	0	374,894,360	0
DETAILS OF WRITE-INS											
58001.	XXX										
58002.	XXX										
58003.	XXX										
58998. Summary of remaining write-ins for Line 58 from overflow page	XXX	0	0	0	0	0	0	0	0	0	0
58999. Totals (Lines 58001 through 58003 plus 58998)(Line 58 above)	XXX	0	0	0	0	0	0	0	0	0	0

(a) Active Status Counts:

- 1. L - Licensed or Chartered - Licensed insurance carrier or domiciled RRG..... 5
- 2. R - Registered - Non-domiciled RRGs..... 0
- 3. E - Eligible - Reporting entities eligible or approved to write surplus lines in the state. 0
- 4. Q - Qualified - Qualified or accredited reinsurer..... 0
- 5. N - None of the above - Not allowed to write business in the state..... 52

SCHEDULE Y - INFORMATION CONCERNING ACTIVITIES OF INSURANCE MEMBERS OF A HOLDING COMPANY GROUP

PART 1 - ORGANIZATIONAL CHART



This organizational chart reflects the insurance entity reporting system and identifies the relationship between the ultimate parent and all member insurers. The ultimate controlling company is a Fortune 6 company with numerous subsidiaries, the majority of which do not interact with the insurance entities.

(1) Insurers/HMO's

Percentages are rounded to the nearest whole percent and based on ownership of voting rights.

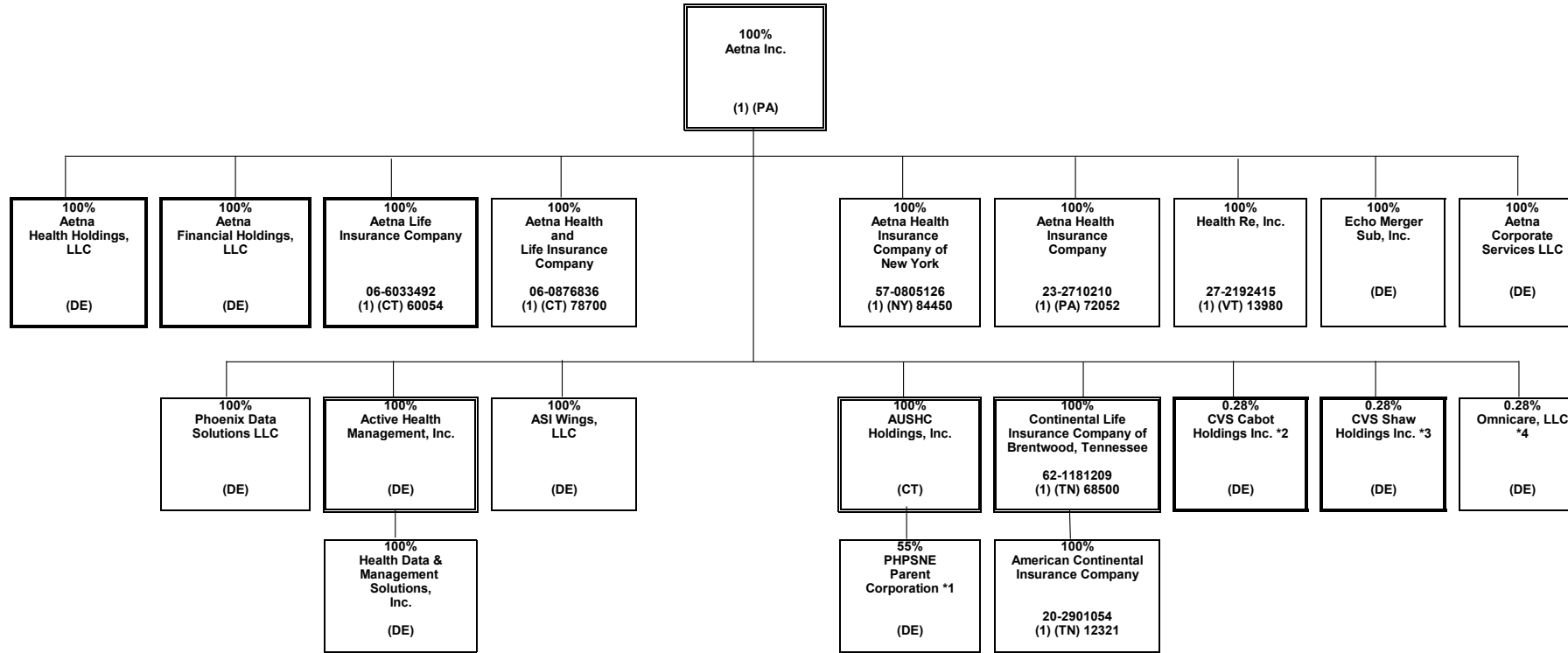
Double borders indicate entity has subsidiaries shown on the same page.

Bold borders indicate entity has subsidiaries shown on a separate page.

*1 Coram Clinical Trials, Inc. is also 25% owned by Aetna Life Insurance Company

SCHEDULE Y - INFORMATION CONCERNING ACTIVITIES OF INSURANCE MEMBERS OF A HOLDING COMPANY GROUP

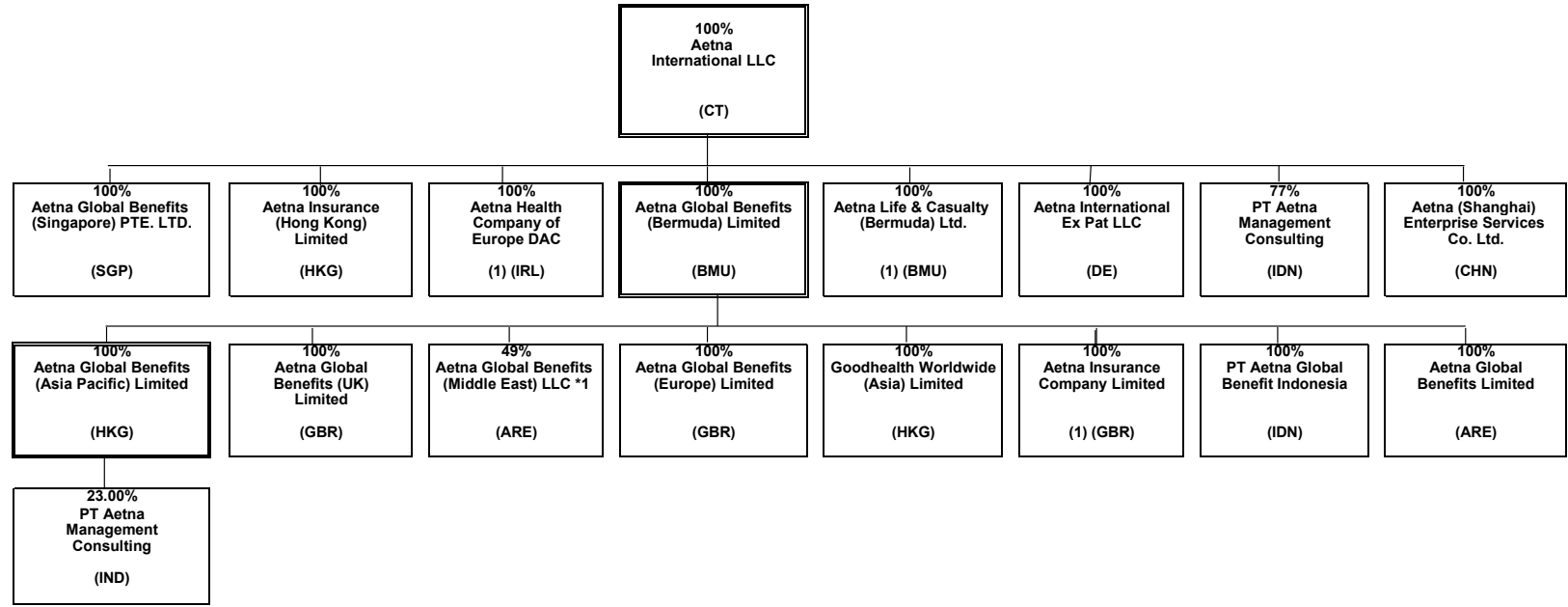
PART 1 - ORGANIZATIONAL CHART



*1 PHPSNE Parent Corporation is also 45% owned by third parties.
 *2 CVS Cabot Holdings Inc. is also 99.72% owned by Coram Clinical Trials, Inc.
 *3 CVS Shaw Holdings Inc. is also 99.72% owned by Coram Clinical Trials, Inc.
 *4 Omnicare, LLC is also owned by CVS Cabot Holdings Inc and CVS Shaw Holdings Inc., each with 49.86% ownership.

SCHEDULE Y - INFORMATION CONCERNING ACTIVITIES OF INSURANCE MEMBERS OF A HOLDING COMPANY GROUP

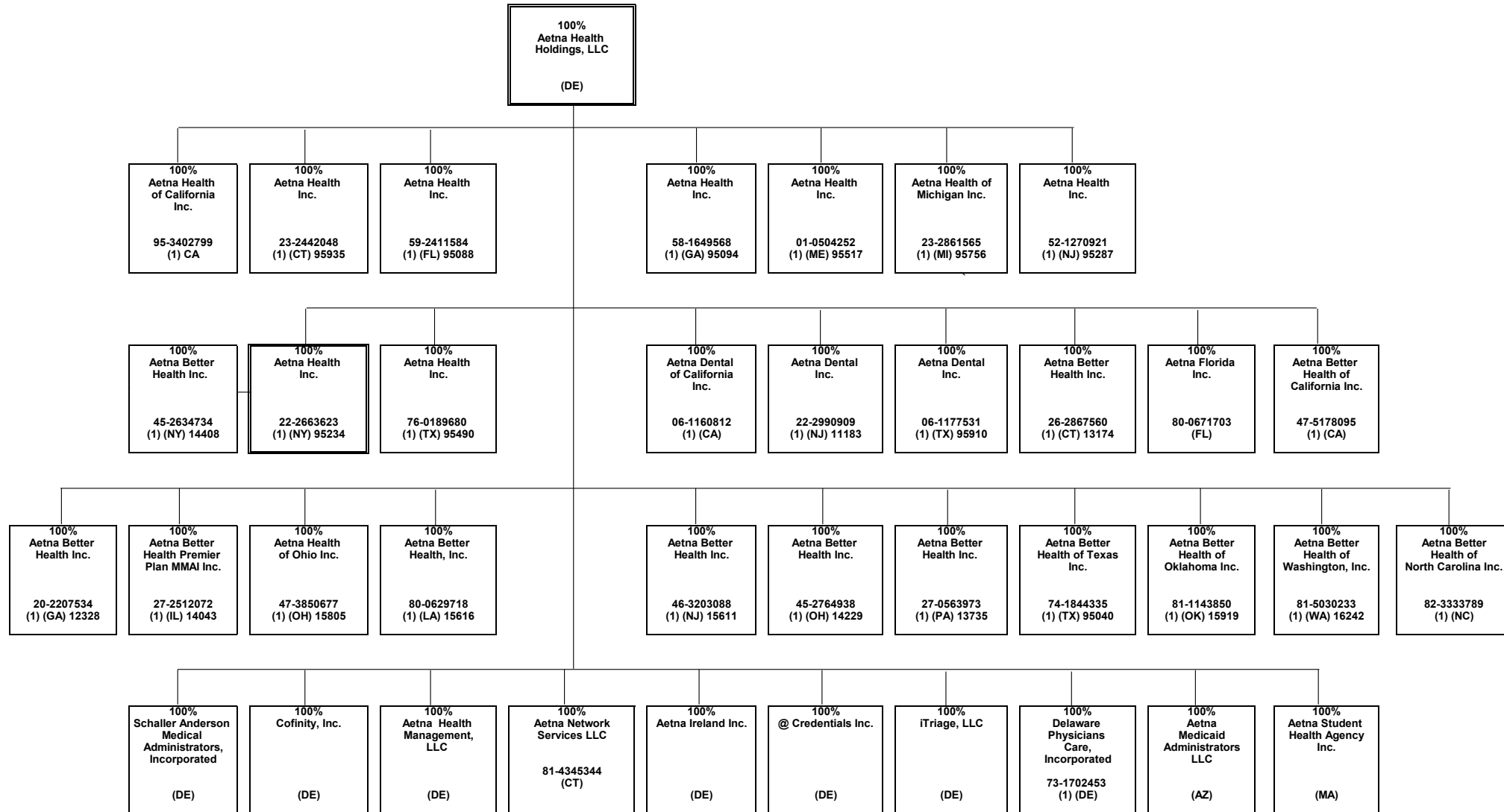
PART 1 - ORGANIZATIONAL CHART



*1 Aetna Global Benefits (Middle East) LLC is also 51% is owned by Euro Gulf LLC, Aetna's Nominee.

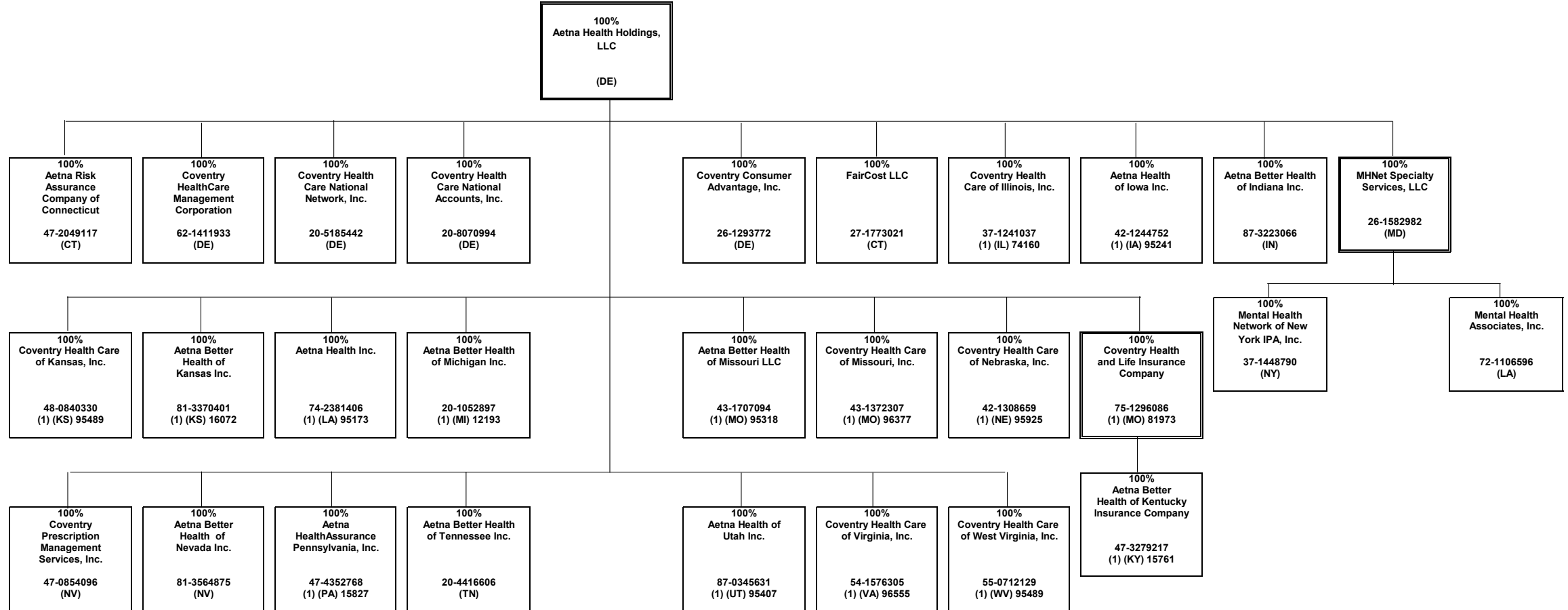
SCHEDULE Y - INFORMATION CONCERNING ACTIVITIES OF INSURANCE MEMBERS OF A HOLDING COMPANY GROUP

PART 1 - ORGANIZATIONAL CHART



SCHEDULE Y - INFORMATION CONCERNING ACTIVITIES OF INSURANCE MEMBERS OF A HOLDING COMPANY GROUP

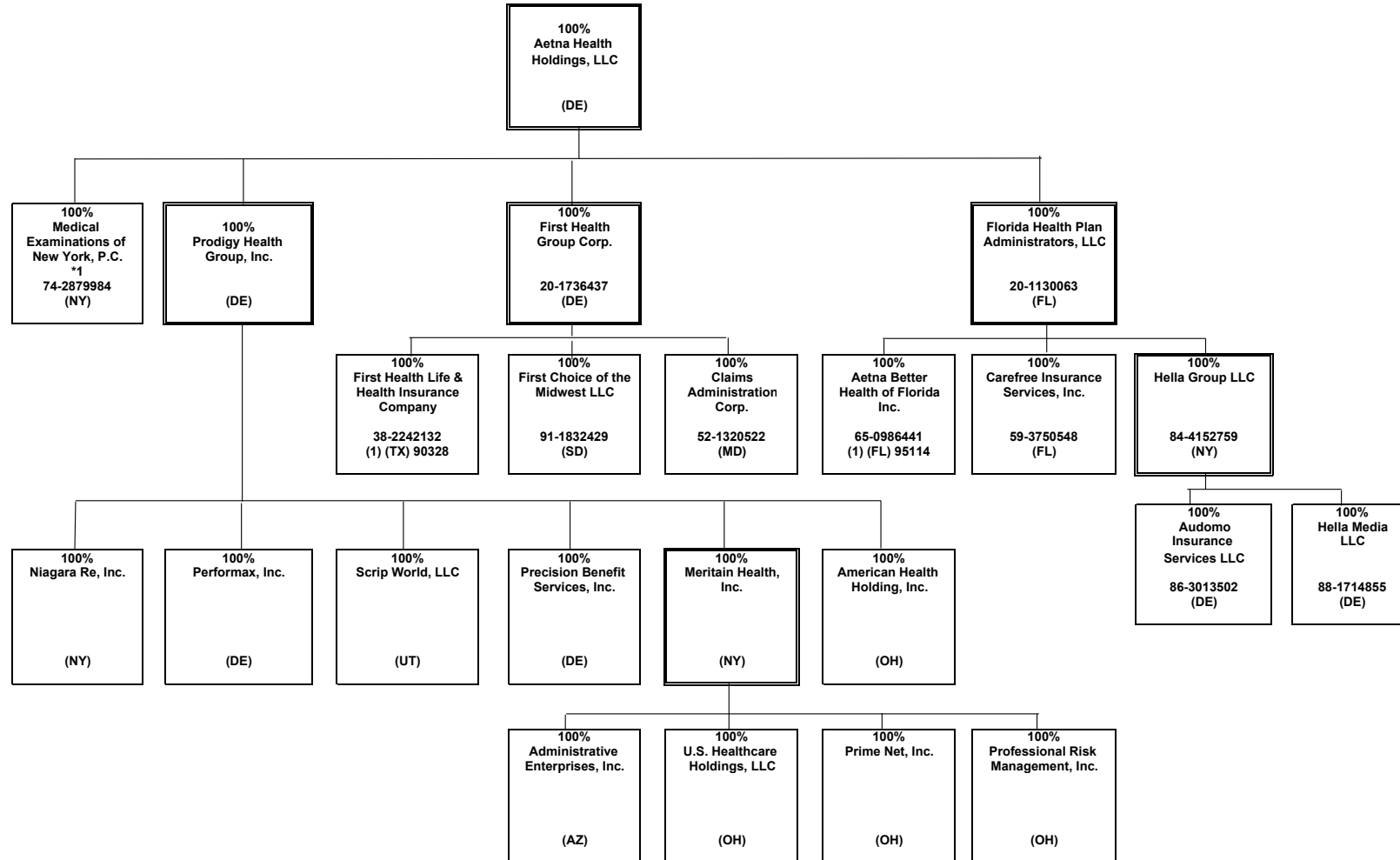
PART 1 - ORGANIZATIONAL CHART



15.4

SCHEDULE Y - INFORMATION CONCERNING ACTIVITIES OF INSURANCE MEMBERS OF A HOLDING COMPANY GROUP

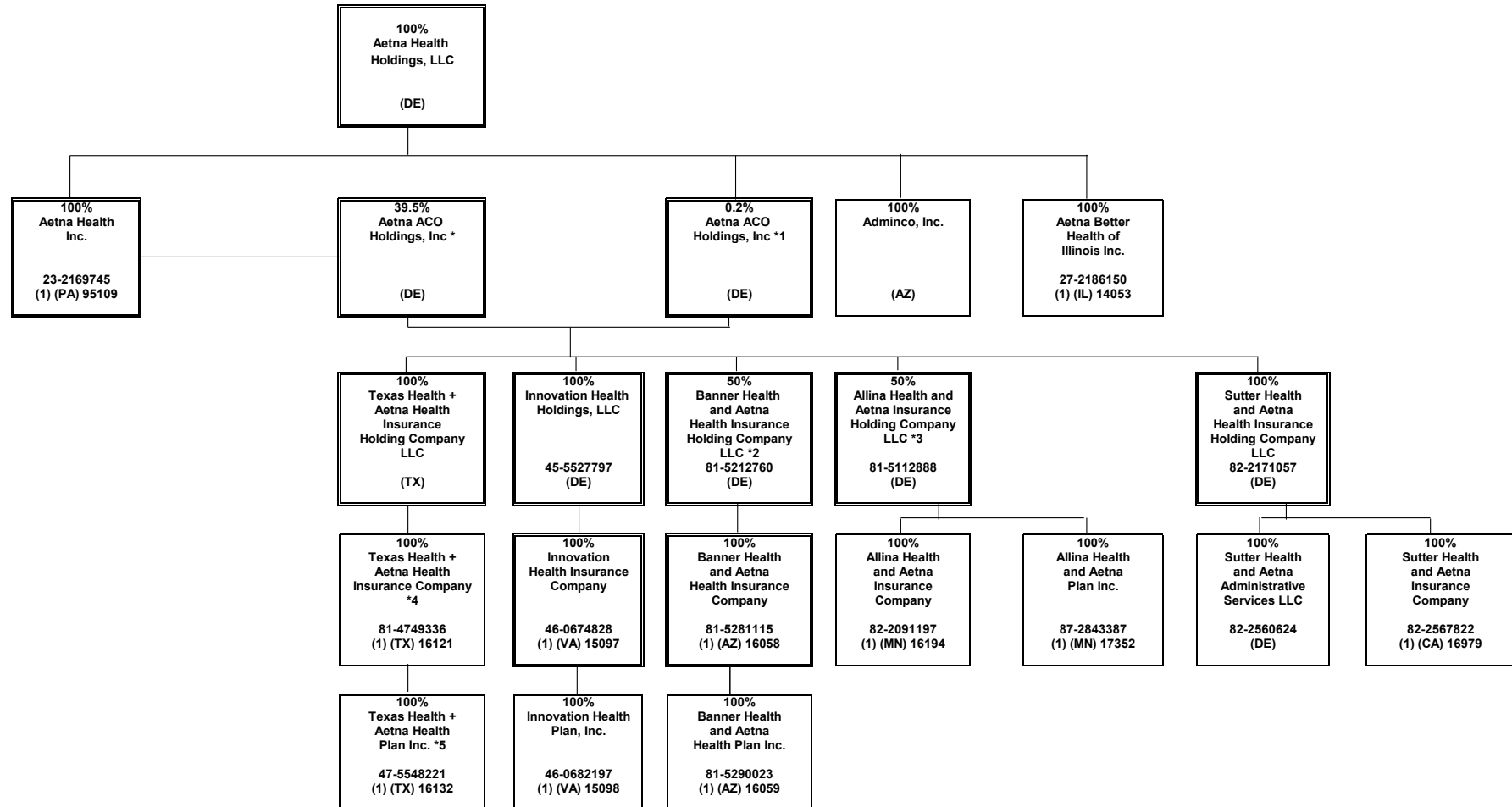
PART 1 - ORGANIZATIONAL CHART



*1 Owned via a nominee

SCHEDULE Y - INFORMATION CONCERNING ACTIVITIES OF INSURANCE MEMBERS OF A HOLDING COMPANY GROUP

PART 1 - ORGANIZATIONAL CHART



*1 Aetna ACO Holdings Inc. is owned by Aetna Life Insurance Company (302 shares); Aetna Health Inc. (PA) (198 shares); and Aetna Health Holdings, LLC (1 share).

*2 Banner Health and Aetna Health Insurance Holding Company LLC is also 50% owned by Banner Health.

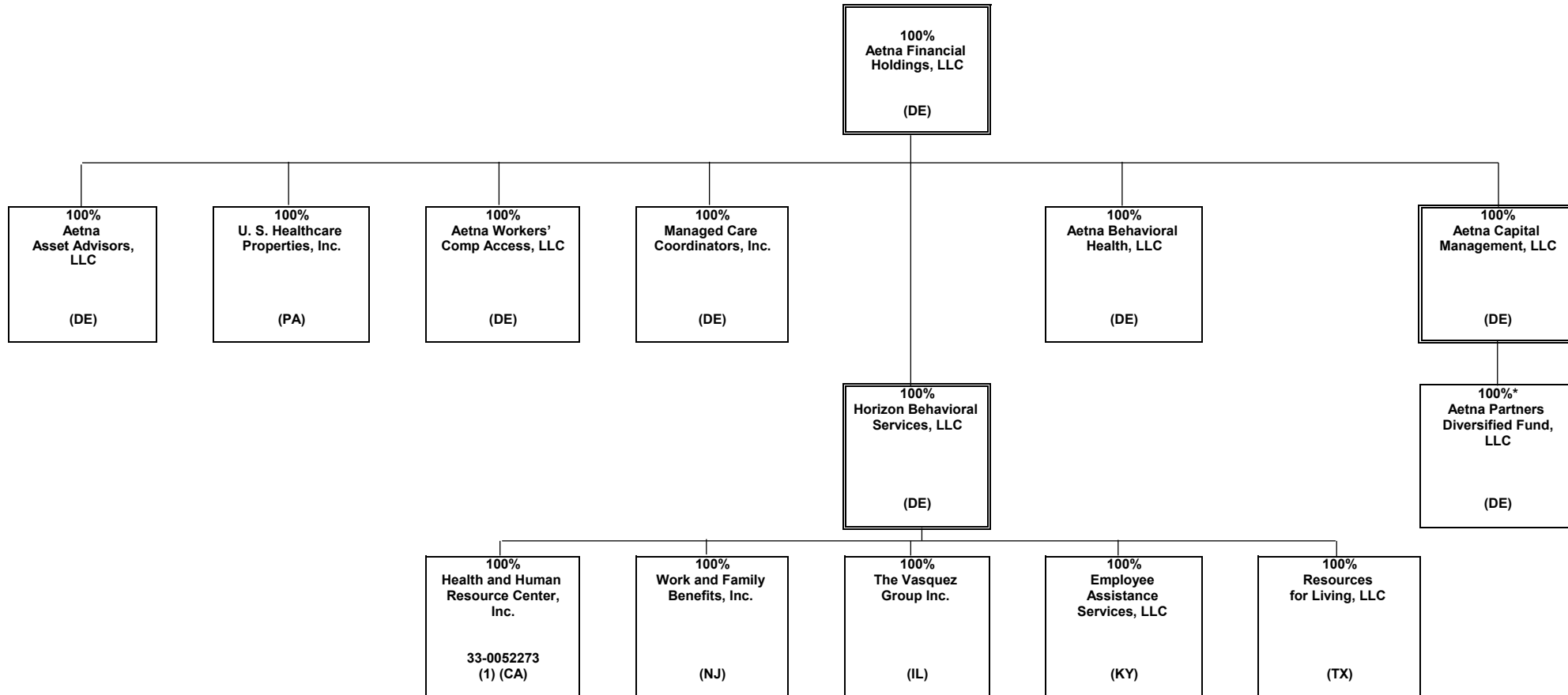
*3 Allina Health and Aetna Insurance Holding Company LLC is also 50% owned by Allina Health.

*4 Effective on April 1, 2024, Texas Health + Aetna Health Insurance Company was merged into Aetna Life Insurance Company.

*5 Effective on April 1, 2024, Texas Health + Aetna Health Plan Inc. was merged into Aetna Health Inc. (Texas).

SCHEDULE Y - INFORMATION CONCERNING ACTIVITIES OF INSURANCE MEMBERS OF A HOLDING COMPANY GROUP

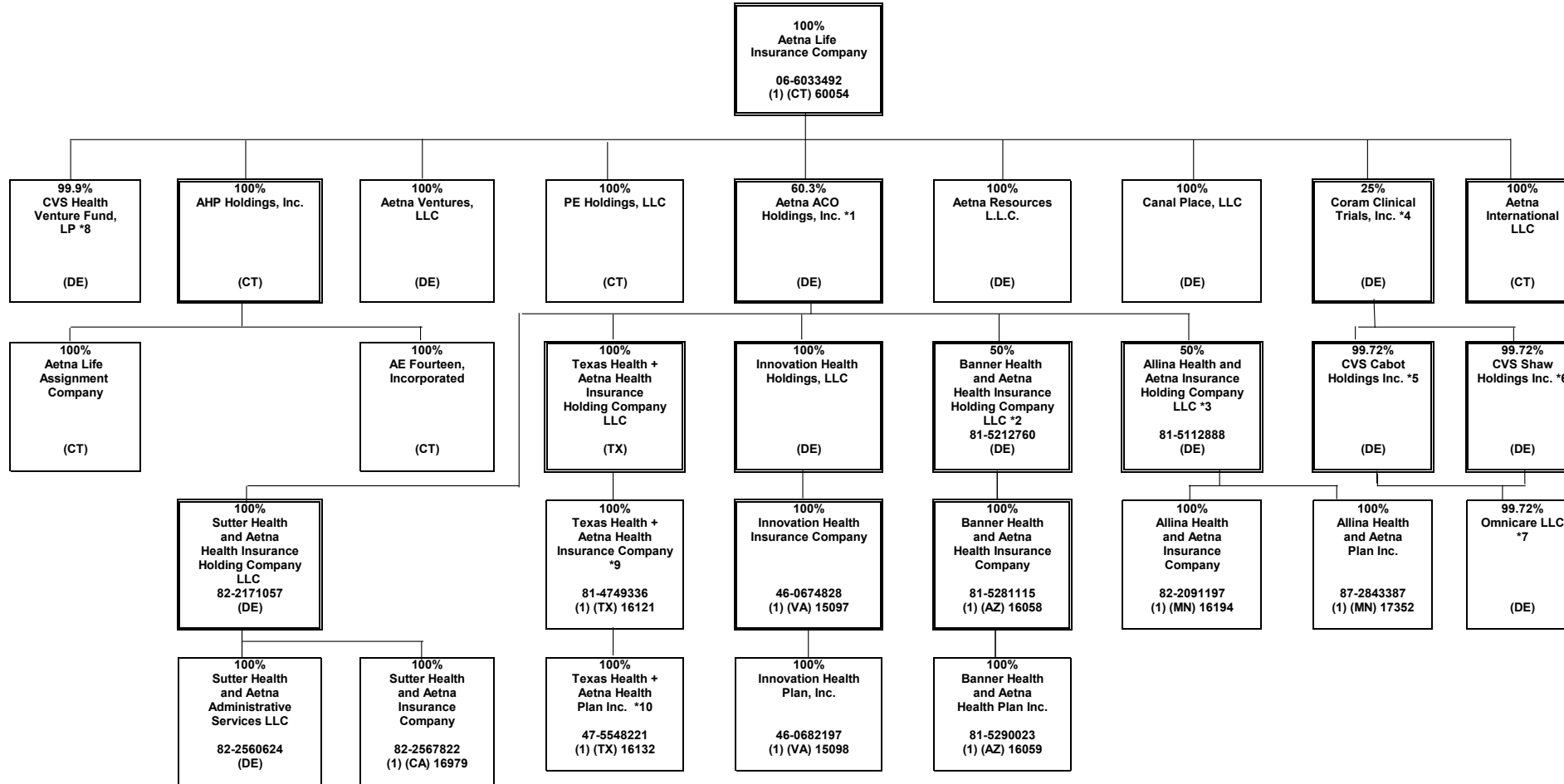
PART 1 - ORGANIZATIONAL CHART



* Aetna Capital Management, LLC is the managing member of Aetna Partners Diversified Fund, LLC ("APDF"). APDF is a fund of hedge funds and certain subsidiaries of CVS Health Group invest in this fund, which does not confer any managing or controlling ownership interests in APDF. Aetna Life Insurance Company is the largest investor in APDF and currently owns a majority of the non-managing member interests of APDF.

SCHEDULE Y - INFORMATION CONCERNING ACTIVITIES OF INSURANCE MEMBERS OF A HOLDING COMPANY GROUP

PART 1 - ORGANIZATIONAL CHART



*1 Aetna ACO Holdings Inc. is owned by Aetna Life Insurance Company (302 shares); Aetna Health Inc. (PA) (198 shares); and Aetna Health Holdings, LLC (1 share).

*2 Banner Health and Aetna Health Insurance Holding Company LLC is also 50% owned by Banner Health.

*3 Allina Health and Aetna Insurance Holding Company LLC is also 50% owned by Allina Health System.

*4 Coram Clinical Trials, Inc. is also 75% owned by CVS Pharmacy, Inc.

*5 CVS Cabot Holdings Inc. is also .28% owned by Aetna Inc.

*6 CVS Shaw Holdings Inc. is also .28% owned by Aetna Inc.

*7 Remaining .28% owned by Aetna Inc. CVS Cabot Holdings Inc. and CVS Shaw Holdings Inc. each owning 49.86%.

*8 CVS Health Venture Fund, LP is also 0.1% owned by CVS Health Ventures Fund GP, LLC

*9 Effective on April 1, 2024, Texas Health + Aetna Health Insurance Company was merged into Aetna Life Insurance Company.

*10 Effective on April 1, 2024, Texas Health + Aetna Health Plan Inc. was merged into Aetna Health Inc. (Texas).

STATEMENT AS OF MARCH 31, 2024 OF THE Coventry Health Care of Missouri, Inc.

SCHEDULE Y
PART 1A - DETAIL OF INSURANCE HOLDING COMPANY SYSTEM

1	2	3	4	5	6	7	8	9	10	11	12	13	14	15	16
Group Code	Group Name	NAIC Company Code	ID Number	Federal RSSD	CIK	Name of Securities Exchange if Publicly Traded (U.S. or International)	Names of Parent, Subsidiaries Or Affiliates	Domiciliary Location	Relationship to Reporting Entity	Directly Controlled by (Name of Entity/Person)	Type of Control (Ownership, Board, Management, Attorney-in-Fact, Influence, Other)	If Control is Ownership Provide Percentage	Ultimate Controlling Entity(ies)/Person(s)	Is an SCA Filing Required? (Yes/No)	*
.0001	CVS HEALTH GROUP		05-0494040		0000064803	NYSE	CVS Health Corporation	DE	UIP	Board of Directors	Board of Directors	100.000	CVS Health Corporation	NO	0
.0001	CVS HEALTH GROUP	63444	06-1566092				Accendo Insurance Company	UT	IA	Part D Holding Company, L.L.C.	Ownership	100.000	CVS Health Corporation	NO	0
.0001	CVS HEALTH GROUP	12575	20-2833904				SilverScript Insurance Company	TN	IA	Part D Holding Company, L.L.C.	Ownership	100.000	CVS Health Corporation	NO	0
.0001	CVS HEALTH GROUP	00000	05-0340626				CVS Pharmacy, Inc.	RI	UIP	CVS Health Corporation	Ownership	100.000	CVS Health Corporation	NO	0
.0001	CVS HEALTH GROUP	00000	20-8404182				Caremark Rx, L.L.C.	DE	NIA	CVS Pharmacy, Inc	Ownership	100.000	CVS Health Corporation	NO	0
.0001	CVS HEALTH GROUP	00000	61-1715010				Part D Holding Company, L.L.C.	DE	NIA	Caremark, Rx., L.L.C.	Ownership	100.000	CVS Health Corporation	NO	0
.0001	CVS HEALTH GROUP	00000	33-1113587				CVS Caremark Part D Services, L.L.C.	DE	NIA	Caremark, Rx., L.L.C.	Ownership	100.000	CVS Health Corporation	NO	0
.0001	CVS HEALTH GROUP	00000	87-0548860				RxAmerica, L.L.C.	DE	NIA	Caremark, Rx., L.L.C.	Ownership	100.000	CVS Health Corporation	NO	0
.0001	CVS HEALTH GROUP	00000	11-2580136				Caremark Ulysses Holding Corporation	NY	NIA	Caremark, Rx., L.L.C.	Ownership	100.000	CVS Health Corporation	NO	0
.0001	CVS HEALTH GROUP	00000	87-0804047				MemberHealth, L.L.C.	DE	NIA	Caremark Ulysses Holding Corporation	Ownership	100.000	CVS Health Corporation	NO	0
.0001	CVS HEALTH GROUP	00000	05-0500188				CVS Caremark Indemnity, Ltd.	BMU	IA	CVS Foreign, Inc.	Ownership	100.000	CVS Health Corporation	NO	0
.0001	CVS HEALTH GROUP	00000	27-1298765				UAC Holding, Inc.	DE	NIA	Caremark Ulysses Holding Corporation	Ownership	100.000	CVS Health Corporation	NO	0
.0001	CVS HEALTH GROUP	00000	05-0497953				CVS Foreign, Inc.	NY	NIA	CVS Health Corporation	Ownership	100.000	CVS Health Corporation	NO	0
.0001	CVS HEALTH GROUP	00000	58-2160656				Coram Clinical Trials, Inc.	DE	NIA	CVS Pharmacy, Inc	Ownership	75.000	CVS Health Corporation	NO	7
.0001	CVS HEALTH GROUP	00000	23-2229683	3060706	0001122304		Aetna Inc.	PA	UIP	CVS Pharmacy, Inc	Ownership	100.000	CVS Health Corporation	NO	0
.0001	CVS HEALTH GROUP	00000	30-0123754				Aetna Health Holdings, LLC	DE	UDP	Aetna Inc.	Ownership	100.000	CVS Health Corporation	NO	0
.0001	CVS HEALTH GROUP	00000	95-3402799				Aetna Health of California Inc.	CA	IA	Aetna Health Holdings, LLC	Ownership	100.000	CVS Health Corporation	NO	0
.0001	CVS HEALTH GROUP	95935	23-2442048				Aetna Health Inc.	CT	IA	Aetna Health Holdings, LLC	Ownership	100.000	CVS Health Corporation	NO	0
.0001	CVS HEALTH GROUP	95088	59-2411584				Aetna Health Inc.	FL	IA	Aetna Health Holdings, LLC	Ownership	100.000	CVS Health Corporation	NO	0
.0001	CVS HEALTH GROUP	95094	58-1649568				Aetna Health Inc.	GA	IA	Aetna Health Holdings, LLC	Ownership	100.000	CVS Health Corporation	NO	0
.0001	CVS HEALTH GROUP	95517	01-0504252				Aetna Health Inc.	ME	IA	Aetna Health Holdings, LLC	Ownership	100.000	CVS Health Corporation	NO	0
.0001	CVS HEALTH GROUP	95756	23-2861565				Aetna Health of Michigan Inc.	MI	IA	Aetna Health Holdings, LLC	Ownership	100.000	CVS Health Corporation	NO	0
.0001	CVS HEALTH GROUP	95287	52-1270921				Aetna Health Inc.	NJ	IA	Aetna Health Holdings, LLC	Ownership	100.000	CVS Health Corporation	NO	0
.0001	CVS HEALTH GROUP	95234	22-2663623				Aetna Health Inc.	NY	IA	Aetna Health Holdings, LLC	Ownership	100.000	CVS Health Corporation	NO	0
.0001	CVS HEALTH GROUP	14408	45-2634734				Aetna Better Health Inc.	NY	IA	Aetna Health Inc. (NY)	Ownership	100.000	CVS Health Corporation	NO	0
.0001	CVS HEALTH GROUP	95490	76-0189680				Aetna Health Inc.	TX	IA	Aetna Health Holdings, LLC	Ownership	100.000	CVS Health Corporation	NO	0
.0001	CVS HEALTH GROUP	95040	74-1844335				Aetna Better Health of Texas Inc.	TX	IA	Aetna Health Holdings, LLC	Ownership	100.000	CVS Health Corporation	NO	0
.0001	CVS HEALTH GROUP	12328	20-2207534				Aetna Better Health Inc.	GA	IA	Aetna Health Holdings, LLC	Ownership	100.000	CVS Health Corporation	NO	0
.0001	CVS HEALTH GROUP	00000	06-1160812				Aetna Dental of California Inc.	CA	IA	Aetna Health Holdings, LLC	Ownership	100.000	CVS Health Corporation	NO	0
.0001	CVS HEALTH GROUP	11183	22-2990909				Aetna Dental Inc.	NJ	IA	Aetna Health Holdings, LLC	Ownership	100.000	CVS Health Corporation	NO	0
.0001	CVS HEALTH GROUP	95910	06-1177531				Aetna Dental Inc.	TX	IA	Aetna Health Holdings, LLC	Ownership	100.000	CVS Health Corporation	NO	0
.0001	CVS HEALTH GROUP	00000	13-3670795				Aetna Health Management, LLC	DE	NIA	Aetna Health Holdings, LLC	Ownership	100.000	CVS Health Corporation	NO	0
.0001	CVS HEALTH GROUP	00000	22-3187443				Aetna Ireland Inc.	DE	NIA	Aetna Health Holdings, LLC	Ownership	100.000	CVS Health Corporation	NO	0
.0001	CVS HEALTH GROUP	00000	20-1274723				Cofinity, Inc.	DE	NIA	Aetna Health Holdings, LLC	Ownership	100.000	CVS Health Corporation	NO	0
.0001	CVS HEALTH GROUP	00000	23-2671370				@Credentials Inc.	DE	NIA	Aetna Health Holdings, LLC	Ownership	100.000	CVS Health Corporation	NO	0
.0001	CVS HEALTH GROUP	13735	27-0563973				Aetna Better Health Inc.	PA	IA	Aetna Health Holdings, LLC	Ownership	100.000	CVS Health Corporation	NO	0
.0001	CVS HEALTH GROUP	13174	26-2867560				Aetna Better Health Inc.	CT	IA	Aetna Health Holdings, LLC	Ownership	100.000	CVS Health Corporation	NO	0
.0001	CVS HEALTH GROUP	00000	47-5178095				Aetna Better Health of California Inc.	CA	IA	Aetna Health Holdings, LLC	Ownership	100.000	CVS Health Corporation	NO	0
.0001	CVS HEALTH GROUP	14043	27-2512072				Aetna Better Health Premier Plan MMAI Inc.	IL	IA	Aetna Health Holdings, LLC	Ownership	100.000	CVS Health Corporation	NO	0
.0001	CVS HEALTH GROUP	15805	47-3850677				Aetna Health of Ohio Inc.	OH	IA	Aetna Health Holdings, LLC	Ownership	100.000	CVS Health Corporation	NO	0
.0001	CVS HEALTH GROUP	15616	80-0629718				Aetna Better Health, Inc.	LA	IA	Aetna Health Holdings, LLC	Ownership	100.000	CVS Health Corporation	NO	0
.0001	CVS HEALTH GROUP	00000	80-0671703				Aetna Florida Inc.	FL	NIA	Aetna Health Holdings, LLC	Ownership	100.000	CVS Health Corporation	NO	0
.0001	CVS HEALTH GROUP	14229	45-2764938				Aetna Better Health Inc.	OH	IA	Aetna Health Holdings, LLC	Ownership	100.000	CVS Health Corporation	NO	0
.0001	CVS HEALTH GROUP	15611	46-3203088				Aetna Better Health Inc.	NJ	IA	Aetna Health Holdings, LLC	Ownership	100.000	CVS Health Corporation	NO	0
.0001	CVS HEALTH GROUP	15919	81-1143850				Aetna Better Health of Oklahoma Inc.	OK	IA	Aetna Health Holdings, LLC	Ownership	100.000	CVS Health Corporation	NO	0
.0001	CVS HEALTH GROUP	00000	04-2708160				Aetna Student Health Agency Inc.	MA	NIA	Aetna Health Holdings, LLC	Ownership	100.000	CVS Health Corporation	NO	0
.0001	CVS HEALTH GROUP	00000	73-1702453				Delaware Physicians Care, Incorporated	DE	NIA	Aetna Health Holdings, LLC	Ownership	100.000	CVS Health Corporation	NO	0
.0001	CVS HEALTH GROUP	00000	01-0826783				Schaller Anderson Medical Administrators, Incorporated	DE	NIA	Aetna Health Holdings, LLC	Ownership	100.000	CVS Health Corporation	NO	0

STATEMENT AS OF MARCH 31, 2024 OF THE Coventry Health Care of Missouri, Inc.

SCHEDULE Y
PART 1A - DETAIL OF INSURANCE HOLDING COMPANY SYSTEM

1	2	3	4	5	6	7	8	9	10	11	12	13	14	15	16
Group Code	Group Name	NAIC Company Code	ID Number	Federal RSSD	CIK	Name of Securities Exchange if Publicly Traded (U.S. or International)	Names of Parent, Subsidiaries Or Affiliates	Domiciliary Location	Relationship to Reporting Entity	Directly Controlled by (Name of Entity/Person)	Type of Control (Ownership, Board, Management, Attorney-in-Fact, Influence, Other)	If Control is Ownership Provide Percentage	Ultimate Controlling Entity(ies)/Person(s)	Is an SCA Filing Required? (Yes/No)	*
.0001	CVS HEALTH GROUP	00000	86-0842559				Aetna Medicaid Administrators LLC	AZ	NIA	Aetna Health Holdings, LLC	Ownership	100.000	CVS Health Corporation	NO	0
.0001	CVS HEALTH GROUP	00000	45-2944270				iTriage, LLC	DE	NIA	Aetna Health Holdings, LLC	Ownership	100.000	CVS Health Corporation	NO	0
.0001	CVS HEALTH GROUP	00000	16-1471176				Prodigy Health Group, Inc.	DE	NIA	Aetna Health Holdings, LLC	Ownership	100.000	CVS Health Corporation	NO	0
.0001	CVS HEALTH GROUP	00000	45-4901541				Aetna ACO Holdings, Inc.	DE	NIA	Aetna Health Holdings, LLC	Ownership	0.200	CVS Health Corporation	YES	2
.0001	CVS HEALTH GROUP	00000	74-2879984				Medical Examinations of New York, P.C.	NY	NIA	Aetna Health Holdings, LLC	Ownership	100.000	CVS Health Corporation	NO	12
.0001	CVS HEALTH GROUP	00000	45-5527797				Innovation Health Holdings, LLC	DE	NIA	Aetna ACO Holdings, Inc.	Ownership	100.000	CVS Health Corporation	NO	0
.0001	CVS HEALTH GROUP	15097	46-0674828				Innovation Health Insurance Company	VA	IA	Innovation Health Holdings, LLC	Ownership	100.000	CVS Health Corporation	NO	0
.0001	CVS HEALTH GROUP	15098	46-0682197				Innovation Health Plan, Inc.	VA	IA	Innovation Health Insurance Company	Ownership	100.000	CVS Health Corporation	NO	0
.0001	CVS HEALTH GROUP	00000	81-3789357				Texas Health + Aetna Health Insurance Holding Company LLC	TX	NIA	Aetna ACO Holdings, Inc.	Ownership	100.000	CVS Health Corporation	NO	0
.0001	CVS HEALTH GROUP	16121	81-4749336				Texas Health + Aetna Health Insurance Company	TX	IA	Texas Health + Aetna Health Insurance Holding Company LLC	Ownership	100.000	CVS Health Corporation	NO	13
.0001	CVS HEALTH GROUP	16132	47-5548221				Texas Health + Aetna Health Plan Inc.	TX	IA	Texas Health + Aetna Health Insurance Company	Ownership	100.000	CVS Health Corporation	NO	14
.0001	CVS HEALTH GROUP	95109	23-2169745				Aetna Health Inc.	PA	IA	Aetna Health Holdings, LLC	Ownership	100.000	CVS Health Corporation	NO	0
.0001	CVS HEALTH GROUP	00000	45-4901541				Aetna ACO Holdings, Inc.	DE	NIA	Aetna Health Inc. (PA)	Ownership	39.500	CVS Health Corporation	YES	2
.0001	CVS HEALTH GROUP	00000	20-0438576				Niagara Re, Inc.	NY	NIA	Prodigy Health Group, Inc.	Ownership	100.000	CVS Health Corporation	NO	0
.0001	CVS HEALTH GROUP	00000	52-2200070				Performax, Inc.	DE	NIA	Prodigy Health Group, Inc.	Ownership	100.000	CVS Health Corporation	NO	0
.0001	CVS HEALTH GROUP	00000	87-0632355				Scrip World, LLC	UT	NIA	Prodigy Health Group, Inc.	Ownership	100.000	CVS Health Corporation	NO	0
.0001	CVS HEALTH GROUP	00000	27-1760756				Precision Benefit Services, Inc.	DE	NIA	Prodigy Health Group, Inc.	Ownership	100.000	CVS Health Corporation	NO	0
.0001	CVS HEALTH GROUP	00000	31-1368946				American Health Holding, Inc.	OH	NIA	Prodigy Health Group, Inc.	Ownership	100.000	CVS Health Corporation	NO	0
.0001	CVS HEALTH GROUP	00000	16-1264154				Meritain Health, Inc.	NY	NIA	Prodigy Health Group, Inc.	Ownership	100.000	CVS Health Corporation	NO	0
.0001	CVS HEALTH GROUP	00000	86-0537707				Adminco, Inc.	AZ	NIA	Aetna Health Holdings, LLC	Ownership	100.000	CVS Health Corporation	NO	0
.0001	CVS HEALTH GROUP	00000	86-0527428				Administrative Enterprises, Inc.	AZ	NIA	Meritain Health, Inc.	Ownership	100.000	CVS Health Corporation	NO	0
.0001	CVS HEALTH GROUP	00000	16-1684061				U.S. Healthcare Holdings, LLC	OH	NIA	Meritain Health, Inc.	Ownership	100.000	CVS Health Corporation	NO	0
.0001	CVS HEALTH GROUP	00000	34-1670239				Prime Net, Inc.	OH	NIA	Meritain Health, Inc.	Ownership	100.000	CVS Health Corporation	NO	0
.0001	CVS HEALTH GROUP	00000	34-1348032				Professional Risk Management, Inc.	OH	NIA	Meritain Health, Inc.	Ownership	100.000	CVS Health Corporation	NO	0
.0001	CVS HEALTH GROUP	68500	62-1181209				Continental Life Insurance Company of Brentwood, Tennessee	TN	IA	Aetna Inc.	Ownership	100.000	CVS Health Corporation	NO	0
.0001	CVS HEALTH GROUP	12321	20-2901054				American Continental Insurance Company	TN	IA	Continental Life Insurance Company of Brentwood, Tennessee	Ownership	100.000	CVS Health Corporation	NO	0
.0001	CVS HEALTH GROUP	60054	06-6033492				Aetna Life Insurance Company	CT	IA	Aetna Inc.	Ownership	100.000	CVS Health Corporation	NO	0
.0001	CVS HEALTH GROUP	00000	45-4901541				Aetna ACO Holdings, Inc.	DE	NIA	Aetna Life Insurance Company	Ownership	60.300	CVS Health Corporation	YES	2
.0001	CVS HEALTH GROUP	00000	06-1270755				AHP Holdings, Inc.	CT	NIA	Aetna Life Insurance Company	Ownership	100.000	CVS Health Corporation	NO	0
.0001	CVS HEALTH GROUP	00000	06-1028469				AE Fourteen, Incorporated	CT	NIA	AHP Holdings, Inc.	Ownership	100.000	CVS Health Corporation	NO	0
.0001	CVS HEALTH GROUP	00000	06-1373153				Aetna Life Assignment Company	CT	NIA	AHP Holdings, Inc.	Ownership	100.000	CVS Health Corporation	NO	0
.0001	CVS HEALTH GROUP	00000	20-3678339				PE Holdings, LLC	CT	NIA	Aetna Life Insurance Company	Ownership	100.000	CVS Health Corporation	NO	0
.0001	CVS HEALTH GROUP	00000	06-1423207				Aetna Resources L.L.C.	DE	NIA	Aetna Life Insurance Company	Ownership	100.000	CVS Health Corporation	NO	0
.0001	CVS HEALTH GROUP	00000	20-3180700				Canal Place, LLC	DE	NIA	Aetna Life Insurance Company	Ownership	100.000	CVS Health Corporation	NO	0
.0001	CVS HEALTH GROUP	00000	58-2160656				Aetna Ventures, LLC	DE	NIA	Aetna Life Insurance Company	Ownership	100.000	CVS Health Corporation	NO	0
.0001	CVS HEALTH GROUP	00000	85-3918720				Coram Clinical Trials, Inc.	DE	NIA	Aetna Life Insurance Company	Ownership	25.000	CVS Health Corporation	NO	7
.0001	CVS HEALTH GROUP	00000	85-3918720				CVS Cabot Holdings Inc.	DE	NIA	Coram Clinical Trials, Inc.	Ownership	99.720	CVS Health Corporation	NO	8
.0001	CVS HEALTH GROUP	00000	85-3918567				CVS Shaw Holdings Inc.	DE	NIA	Coram Clinical Trials, Inc.	Ownership	99.720	CVS Health Corporation	NO	9
.0001	CVS HEALTH GROUP	00000	31-1001351				Omnicare, LLC	DE	NIA	CVS Cabot Holdings Inc	Ownership	49.860	CVS Health Corporation	NO	10
.0001	CVS HEALTH GROUP	00000	31-1001351				Omnicare, LLC	DE	NIA	CVS Shaw Holdings Inc	Ownership	49.860	CVS Health Corporation	NO	10
.0001	CVS HEALTH GROUP	00000	41-2035961				Aetna Financial Holdings, LLC	DE	NIA	Aetna Inc.	Ownership	100.000	CVS Health Corporation	NO	0
.0001	CVS HEALTH GROUP	00000	26-2030792				Aetna Asset Advisors, LLC	DE	NIA	Aetna Financial Holdings, LLC	Ownership	100.000	CVS Health Corporation	NO	0
.0001	CVS HEALTH GROUP	00000	23-2354500				U.S. Healthcare Properties, Inc.	PA	NIA	Aetna Financial Holdings, LLC	Ownership	100.000	CVS Health Corporation	NO	0
.0001	CVS HEALTH GROUP	00000	38-3704481				Aetna Capital Management, LLC	DE	NIA	Aetna Financial Holdings, LLC	Ownership	100.000	CVS Health Corporation	NO	0
.0001	CVS HEALTH GROUP	00000	11-3667142		0001314522		Aetna Partners Diversified Fund, LLC	DE	NIA	Aetna Capital Management, LLC	Ownership	100.000	CVS Health Corporation	NO	1

STATEMENT AS OF MARCH 31, 2024 OF THE Coventry Health Care of Missouri, Inc.

SCHEDULE Y
PART 1A - DETAIL OF INSURANCE HOLDING COMPANY SYSTEM

1	2	3	4	5	6	7	8	9	10	11	12	13	14	15	16
Group Code	Group Name	NAIC Company Code	ID Number	Federal RSSD	CIK	Name of Securities Exchange if Publicly Traded (U.S. or International)	Names of Parent, Subsidiaries Or Affiliates	Domiciliary Location	Relationship to Reporting Entity	Directly Controlled by (Name of Entity/Person)	Type of Control (Ownership, Board, Management, Attorney-in-Fact, Influence, Other)	If Control is Ownership Provide Percentage	Ultimate Controlling Entity(ies)/Person(s)	Is an SCA Filing Required? (Yes/No)	*
.0001	CVS HEALTH GROUP	00000	20-0446676				Aetna Workers' Comp Access, LLC	DE	NIA	Aetna Financial Holdings, LLC	Ownership	100.000	CVS Health Corporation	NO	0
.0001	CVS HEALTH GROUP	00000	20-0446713				Aetna Behavioral Health, LLC	DE	NIA	Aetna Financial Holdings, LLC	Ownership	100.000	CVS Health Corporation	NO	0
.0001	CVS HEALTH GROUP	00000	23-2670015				Managed Care Coordinators, Inc.	DE	NIA	Aetna Financial Holdings, LLC	Ownership	100.000	CVS Health Corporation	NO	0
.0001	CVS HEALTH GROUP	00000	59-3269144				Horizon Behavioral Services, LLC	DE	NIA	Aetna Financial Holdings, LLC	Ownership	100.000	CVS Health Corporation	NO	0
.0001	CVS HEALTH GROUP	00000	61-1193498				Employee Assistance Services, LLC	KY	NIA	Horizon Behavioral Services, LLC	Ownership	100.000	CVS Health Corporation	NO	0
.0001	CVS HEALTH GROUP	00000	33-0052273				Health and Human Resource Center, Inc.	CA	IA	Horizon Behavioral Services, LLC	Ownership	100.000	CVS Health Corporation	NO	0
.0001	CVS HEALTH GROUP	00000	75-2420973				Resources for Living, LLC	TX	NIA	Horizon Behavioral Services, LLC	Ownership	100.000	CVS Health Corporation	NO	0
.0001	CVS HEALTH GROUP	00000	36-3681261				The Vasquez Group Inc.	IL	NIA	Horizon Behavioral Services, LLC	Ownership	100.000	CVS Health Corporation	NO	0
.0001	CVS HEALTH GROUP	00000	22-3178125				Work and Family Benefits, Inc.	NJ	NIA	Horizon Behavioral Services, LLC	Ownership	100.000	CVS Health Corporation	NO	0
.0001	CVS HEALTH GROUP	00000	27-1773021				FairCost LLC	CT	NIA	Aetna Health Holdings, LLC	Ownership	100.000	CVS Health Corporation	NO	0
.0001	CVS HEALTH GROUP	78700	06-0876836				Aetna Health and Life Insurance Company	CT	IA	Aetna Inc.	Ownership	100.000	CVS Health Corporation	NO	0
.0001	CVS HEALTH GROUP	72052	23-2710210				Aetna Health Insurance Company	PA	IA	Aetna Inc.	Ownership	100.000	CVS Health Corporation	NO	0
.0001	CVS HEALTH GROUP	84450	57-0805126				Aetna Health Insurance Company of New York	NY	IA	Aetna Inc.	Ownership	100.000	CVS Health Corporation	NO	0
.0001	CVS HEALTH GROUP	00000	06-1571642				Aetna International LLC	CT	NIA	Aetna Life Insurance Company	Ownership	100.000	CVS Health Corporation	NO	0
.0001	CVS HEALTH GROUP	00000	98-0211470				Aetna Life & Casualty (Bermuda) Ltd.	BMU	IA	Aetna International LLC	Ownership	100.000	CVS Health Corporation	NO	0
.0001	CVS HEALTH GROUP	00000	86-1455140				Aetna International Ex Pat LLC	DE	NIA	Aetna International LLC	Ownership	100.000	CVS Health Corporation	NO	0
.0001	CVS HEALTH GROUP	00000					Aetna Global Benefits (Bermuda) Limited	BMU	NIA	Aetna International LLC	Ownership	100.000	CVS Health Corporation	NO	0
.0001	CVS HEALTH GROUP	00000					Aetna Global Benefits (Europe) Limited	GBR	NIA	Aetna Global Benefits (Bermuda) Limited	Ownership	100.000	CVS Health Corporation	NO	0
.0001	CVS HEALTH GROUP	00000					Goodhealth Worldwide (Asia) Limited	HKG	NIA	Aetna Global Benefits (Bermuda) Limited	Ownership	100.000	CVS Health Corporation	NO	0
.0001	CVS HEALTH GROUP	00000					Aetna Global Benefits Limited	ARE	NIA	Aetna Global Benefits (Bermuda) Limited	Ownership	100.000	CVS Health Corporation	NO	0
.0001	CVS HEALTH GROUP	00000					PT Aetna Global Benefits Indonesia	IDN	NIA	Aetna Global Benefits (Bermuda) Limited	Ownership	100.000	CVS Health Corporation	NO	0
.0001	CVS HEALTH GROUP	00000					Aetna Global Benefits (Middle East) LLC	ARE	NIA	Aetna Global Benefits (Bermuda) Limited	Ownership	49.000	CVS Health Corporation	NO	3
.0001	CVS HEALTH GROUP	00000					Aetna Global Benefits (Asia Pacific) Limited	HKG	NIA	Aetna Global Benefits (Bermuda) Limited	Ownership	100.000	CVS Health Corporation	NO	0
.0001	CVS HEALTH GROUP	00000					PT Aetna Management Consulting	IDN	NIA	Aetna International LLC	Ownership	77.000	CVS Health Corporation	NO	0
.0001	CVS HEALTH GROUP	00000					PT Aetna Management Consulting	IDN	NIA	Aetna Global Benefits (Asia Pacific) Limited	Ownership	23.000	CVS Health Corporation	NO	0
.0001	CVS HEALTH GROUP	00000					Aetna Global Benefits (UK) Limited	GBR	NIA	Aetna Global Benefits (Bermuda) Limited	Ownership	100.000	CVS Health Corporation	NO	0
.0001	CVS HEALTH GROUP	00000					Aetna Insurance Company Limited	GBR	IA	Aetna Global Benefits (Bermuda) Limited	Ownership	100.000	CVS Health Corporation	NO	0
.0001	CVS HEALTH GROUP	00000					Aetna Health Company of Europe DAC	IRL	IA	Aetna International LLC	Ownership	100.000	CVS Health Corporation	NO	0
.0001	CVS HEALTH GROUP	00000					Aetna (Shanghai) Enterprise Services Co. Ltd.	CHN	NIA	Aetna International LLC	Ownership	100.000	CVS Health Corporation	NO	0
.0001	CVS HEALTH GROUP	00000					Aetna Global Benefits (Singapore) PTE. LTD.	SGP	NIA	Aetna International LLC	Ownership	100.000	CVS Health Corporation	NO	0
.0001	CVS HEALTH GROUP	00000	22-2578985				AUSHC Holdings, Inc.	CT	NIA	Aetna Inc.	Ownership	100.000	CVS Health Corporation	NO	0
.0001	CVS HEALTH GROUP	00000					Aetna Insurance (Hong Kong) Limited	HKG	IA	Aetna International LLC	Ownership	100.000	CVS Health Corporation	NO	0
.0001	CVS HEALTH GROUP	00000	06-1182176				PHPSE Parent Corporation	DE	NIA	AUSHC Holdings, Inc.	Ownership	55.000	CVS Health Corporation	NO	4
.0001	CVS HEALTH GROUP	00000	52-2182411				Active Health Management, Inc.	DE	NIA	Aetna Inc.	Ownership	100.000	CVS Health Corporation	NO	0
.0001	CVS HEALTH GROUP	00000	47-0970432				Health Data & Management Solutions, Inc.	DE	NIA	Active Health Management, Inc.	Ownership	100.000	CVS Health Corporation	NO	0
.0001	CVS HEALTH GROUP	13980	27-2192415				Health Re, Inc.	VT	IA	Aetna Inc.	Ownership	100.000	CVS Health Corporation	NO	0
.0001	CVS HEALTH GROUP	00000	81-0579372				Phoenix Data Solutions LLC	DE	NIA	Aetna Inc.	Ownership	100.000	CVS Health Corporation	NO	0
.0001	CVS HEALTH GROUP	00000	51-0029326				ASI Wings, LLC	DE	NIA	Aetna Inc.	Ownership	100.000	CVS Health Corporation	NO	0
.0001	CVS HEALTH GROUP	00000	47-4556274				Echo Merger Sub, Inc.	DE	NIA	Aetna Inc.	Ownership	100.000	CVS Health Corporation	NO	0
.0001	CVS HEALTH GROUP	00000	47-4547145				Aetna Corporate Services, LLC	DE	NIA	Aetna Inc.	Ownership	100.000	CVS Health Corporation	NO	0
.0001	CVS HEALTH GROUP	00000	85-3918720				CVS Cabot Holdings Inc.	DE	NIA	Aetna Inc.	Ownership	0.280	CVS Health Corporation	NO	8
.0001	CVS HEALTH GROUP	00000	85-3918567				CVS Shaw Holdings Inc.	DE	NIA	Aetna Inc.	Ownership	0.280	CVS Health Corporation	NO	9
.0001	CVS HEALTH GROUP	00000	31-1001351				Omnicare, LLC	DE	NIA	Aetna Inc.	Ownership	0.280	CVS Health Corporation	NO	10
.0001	CVS HEALTH GROUP	81973	75-1296086				Coventry Health and Life Insurance Company	MO	IA	Aetna Health Holdings, LLC	Ownership	100.000	CVS Health Corporation	NO	0
.0001	CVS HEALTH GROUP	15761	47-3279217				Aetna Better Health of Kentucky Insurance Company	KY	IA	Coventry Health and Life Insurance Company	Ownership	100.000	CVS Health Corporation	NO	0

16.2

STATEMENT AS OF MARCH 31, 2024 OF THE Coventry Health Care of Missouri, Inc.

SCHEDULE Y
PART 1A - DETAIL OF INSURANCE HOLDING COMPANY SYSTEM

1	2	3	4	5	6	7	8	9	10	11	12	13	14	15	16
Group Code	Group Name	NAIC Company Code	ID Number	Federal RSSD	CIK	Name of Securities Exchange if Publicly Traded (U.S. or International)	Names of Parent, Subsidiaries Or Affiliates	Domi-ciliary Location	Relation-ship to Reporting Entity	Directly Controlled by (Name of Entity/Person)	Type of Control (Ownership, Board, Management, Attorney-in-Fact, Influence, Other)	If Control is Ownership Provide Percentage	Ultimate Controlling Entity(ies)/Person(s)	Is an SCA Filing Re-quired? (Yes/No)	*
.0001	CVS HEALTH GROUP	00000	81-4345344				Aetna Network Services LLC	CT	NIA	Aetna Health Holdings, LLC	Ownership	100.000	CVS Health Corporation	NO	0
.0001	CVS HEALTH GROUP	95241	42-1244752				Aetna Health of Iowa Inc.	IA	IA	Aetna Health Holdings, LLC	Ownership	100.000	CVS Health Corporation	NO	0
.0001	CVS HEALTH GROUP	95925	42-1308659				Coventry Health Care of Nebraska, Inc.	NE	IA	Aetna Health Holdings, LLC	Ownership	100.000	CVS Health Corporation	NO	0
.0001	CVS HEALTH GROUP	00000	47-2049117				Aetna Risk Assurance Company of Connecticut Inc.	CT	IA	Aetna Health Holdings, LLC	Ownership	100.000	CVS Health Corporation	NO	0
.0001	CVS HEALTH GROUP	95173	74-2381406				Aetna Health Inc.	LA	IA	Aetna Health Holdings, LLC	Ownership	100.000	CVS Health Corporation	NO	0
.0001	CVS HEALTH GROUP	00000	47-0854096				Coventry Prescription Management Services, Inc.	NV	NIA	Aetna Health Holdings, LLC	Ownership	100.000	CVS Health Corporation	NO	0
.0001	CVS HEALTH GROUP	16148	81-3564875				Aetna Better Health of Nevada Inc.	NV	NIA	Aetna Health Holdings, LLC	Ownership	100.000	CVS Health Corporation	NO	0
.0001	CVS HEALTH GROUP	96555	54-1576305				Coventry Health Care of Virginia, Inc.	VA	IA	Aetna Health Holdings, LLC	Ownership	100.000	CVS Health Corporation	NO	0
.0001	CVS HEALTH GROUP	96377	43-1372307				Coventry Health Care of Missouri, Inc.	MO	RE	Aetna Health Holdings, LLC	Ownership	100.000	CVS Health Corporation	NO	0
.0001	CVS HEALTH GROUP	95318	43-1702094				Aetna Better Health of Missouri LLC	MO	IA	Aetna Health Holdings, LLC	Ownership	100.000	CVS Health Corporation	NO	0
.0001	CVS HEALTH GROUP	95408	55-0712129				Coventry Health Care of West Virginia, Inc.	WV	IA	Aetna Health Holdings, LLC	Ownership	100.000	CVS Health Corporation	NO	0
.0001	CVS HEALTH GROUP	00000	62-1411933				Coventry HealthCare Management Corporation	DE	NIA	Aetna Health Holdings, LLC	Ownership	100.000	CVS Health Corporation	NO	0
.0001	CVS HEALTH GROUP	15827	47-4352768				Aetna HealthAssurance Pennsylvania, Inc.	PA	IA	Aetna Health Holdings, LLC	Ownership	100.000	CVS Health Corporation	NO	0
.0001	CVS HEALTH GROUP	95489	48-0840330				Coventry Health Care of Kansas, Inc.	KS	IA	Aetna Health Holdings, LLC	Ownership	100.000	CVS Health Corporation	NO	0
.0001	CVS HEALTH GROUP	16072	81-3370401				Aetna Better Health of Kansas Inc.	KS	IA	Aetna Health Holdings, LLC	Ownership	100.000	CVS Health Corporation	NO	0
.0001	CVS HEALTH GROUP	12193	20-1052897				Aetna Better Health of Michigan Inc.	MI	IA	Aetna Health Holdings, LLC	Ownership	100.000	CVS Health Corporation	NO	0
.0001	CVS HEALTH GROUP	95407	87-0345631				Aetna Health of Utah Inc.	UT	IA	Aetna Health Holdings, LLC	Ownership	100.000	CVS Health Corporation	NO	0
.0001	CVS HEALTH GROUP	00000	20-4416606				Aetna Better Health of Tennessee Inc.	TN	NIA	Aetna Health Holdings, LLC	Ownership	100.000	CVS Health Corporation	NO	0
.0001	CVS HEALTH GROUP	74160	37-1241037				Coventry Health Care of Illinois, Inc.	IL	IA	Aetna Health Holdings, LLC	Ownership	100.000	CVS Health Corporation	NO	0
.0001	CVS HEALTH GROUP	00000	20-8070994				Coventry Health Care National Accounts, Inc.	DE	NIA	Aetna Health Holdings, LLC	Ownership	100.000	CVS Health Corporation	NO	0
.0001	CVS HEALTH GROUP	00000	20-5185442				Coventry Health Care National Network, Inc.	DE	NIA	Aetna Health Holdings, LLC	Ownership	100.000	CVS Health Corporation	NO	0
.0001	CVS HEALTH GROUP	00000	26-1293772				Coventry Consumer Advantage, Inc.	DE	NIA	Aetna Health Holdings, LLC	Ownership	100.000	CVS Health Corporation	NO	0
.0001	CVS HEALTH GROUP	00000	20-1736437				First Health Group Corp.	DE	NIA	Aetna Health Holdings, LLC	Ownership	100.000	CVS Health Corporation	NO	0
.0001	CVS HEALTH GROUP	90328	38-2242132				First Health Life & Health Insurance Company	TX	IA	First Health Group Corp.	Ownership	100.000	CVS Health Corporation	NO	0
.0001	CVS HEALTH GROUP	00000	91-1832429				First Choice of the Midwest LLC	SD	NIA	First Health Group Corp.	Ownership	100.000	CVS Health Corporation	NO	0
.0001	CVS HEALTH GROUP	00000	52-1320522				Claims Administration Corp.	MD	NIA	First Health Group Corp.	Ownership	100.000	CVS Health Corporation	NO	0
.0001	CVS HEALTH GROUP	00000	20-1130063				Florida Health Plan Administrators, LLC	FL	NIA	Aetna Health Holdings, LLC	Ownership	100.000	CVS Health Corporation	NO	0
.0001	CVS HEALTH GROUP	95114	65-0986441				Aetna Better Health of Florida Inc.	FL	IA	Florida Health Plan Administrators, LLC	Ownership	100.000	CVS Health Corporation	NO	0
.0001	CVS HEALTH GROUP	95266	84-4152759				Hella Group LLC	NY	NIA	Florida Health Plan Administrators, LLC	Ownership	100.000	CVS Health Corporation	NO	0
.0001	CVS HEALTH GROUP	00000	86-3013502				Audomo Insurance Services LLC	DE	NIA	Hella Group LLC	Ownership	100.000	CVS Health Corporation	NO	0
.0001	CVS HEALTH GROUP	00000	88-1714855				Hella Media LLC	DE	NIA	Hella Group LLC	Ownership	100.000	CVS Health Corporation	NO	0
.0001	CVS HEALTH GROUP	00000	59-3750548				Carefree Insurance Services, Inc.	FL	NIA	Florida Health Plan Administrators, LLC	Ownership	100.000	CVS Health Corporation	NO	0
.0001	CVS HEALTH GROUP	00000	26-1582982				MHNet Specialty Services, LLC	MD	NIA	Aetna Health Holdings, LLC	Ownership	100.000	CVS Health Corporation	NO	0
.0001	CVS HEALTH GROUP	00000	37-1448790				Mental Health Network of New York IPA, Inc.	NY	NIA	MHNet Specialty Services, LLC	Ownership	100.000	CVS Health Corporation	NO	0
.0001	CVS HEALTH GROUP	00000	72-1106596				Mental Health Associates, Inc.	LA	NIA	MHNet Specialty Services, LLC	Ownership	100.000	CVS Health Corporation	NO	0
.0001	CVS HEALTH GROUP	16242	81-5030233				Aetna Better Health of Washington, Inc.	WA	IA	Aetna Health Holdings, LLC	Ownership	100.000	CVS Health Corporation	NO	0
.0001	CVS HEALTH GROUP	00000	81-5212760				Banner Health and Aetna Health Insurance Holding Company LLC	DE	NIA	Aetna ACO Holdings, Inc.	Ownership	50.000	CVS Health Corporation	NO	5
.0001	CVS HEALTH GROUP	16058	81-5281115				Banner Health and Aetna Health Insurance Company	AZ	IA	Banner Health and Aetna Health Insurance Holding Company LLC	Ownership	100.000	CVS Health Corporation	NO	0
.0001	CVS HEALTH GROUP	16059	81-5290023				Banner Health and Aetna Health Plan Inc.	AZ	IA	Banner Health and Aetna Health Insurance Company	Ownership	100.000	CVS Health Corporation	NO	0
.0001	CVS HEALTH GROUP	00000	81-5112888				Allina Health and Aetna Health Insurance Holding Company LLC	DE	NIA	Aetna ACO Holdings, Inc.	Ownership	50.000	CVS Health Corporation	NO	6

STATEMENT AS OF MARCH 31, 2024 OF THE Coventry Health Care of Missouri, Inc.

SCHEDULE Y
PART 1A - DETAIL OF INSURANCE HOLDING COMPANY SYSTEM

1	2	3	4	5	6	7	8	9	10	11	12	13	14	15	16
Group Code	Group Name	NAIC Company Code	ID Number	Federal RSSD	CIK	Name of Securities Exchange if Publicly Traded (U.S. or International)	Names of Parent, Subsidiaries Or Affiliates	Domi-ciliary Location	Relation-ship to Reporting Entity	Directly Controlled by (Name of Entity/Person)	Type of Control (Ownership, Board, Management, Attorney-in-Fact, Influence, Other)	If Control is Ownership Provide Percentage	Ultimate Controlling Entity(ies)/Person(s)	Is an SCA Filing Re-quired? (Yes/No)	*
.0001	CVS HEALTH GROUP	16194	82-2091197				Allina Health and Aetna Insurance Company	.. MN. IA.	Allina Health and Aetna Health Insurance Holding Company LLC	Ownership.....	100.000	CVS Health Corporation	.. NO. 0
.0001	CVS HEALTH GROUP	17352	87-2843387				Allina Health and Aetna Health Plan Inc. Sutter Health and Aetna Insurance Holding Company LLC	.. MN. IA.	Allina Health and Aetna Health Insurance Holding Company LLC	Ownership.....	100.000	CVS Health Corporation	.. NO. 0
.0001	CVS HEALTH GROUP	00000	82-2171057				Sutter Health and Aetna Administrative Services LLC	.. DE. NIA.	Aetna ACO Holdings, Inc. Sutter Health and Aetna Insurance Holding Company LLC	Ownership.....	100.000	CVS Health Corporation	.. NO. 0
.0001	CVS HEALTH GROUP	00000	82-2560624				Sutter Health and Aetna Insurance Holding Company LLC	.. DE. NIA.	Sutter Health and Aetna Insurance Holding Company LLC	Ownership.....	100.000	CVS Health Corporation	.. NO. 0
.0001	CVS HEALTH GROUP	16979	82-2567822				Sutter Health and Aetna Insurance Company	.. CA. IA.	Sutter Health and Aetna Insurance Holding Company LLC	Ownership.....	100.000	CVS Health Corporation	.. NO. 0
.0001	CVS HEALTH GROUP	16558	82-333789				Aetna Better Health of North Carolina Inc.	.. NC. IA.	Aetna Health Holdings, LLC	Ownership.....	100.000	CVS Health Corporation	.. NO. 0
.0001	CVS HEALTH GROUP	14053	27-2186150				Aetna Better Health of Illinois Inc.	.. IL. IA.	Aetna Health Holdings, LLC	Ownership.....	100.000	CVS Health Corporation	.. NO. 0
.0001	CVS HEALTH GROUP	00000	87-3223066				Aetna Better Health of Indiana Inc.	.. IN. NIA.	Aetna Health Holdings, LLC	Ownership.....	100.000	CVS Health Corporation	.. NO. 0
.0001	CVS HEALTH GROUP	00000					CVS Health Venture Fund, LP	.. DE. NIA.	Aetna Life Insurance Company	Ownership.....	100.000	CVS Health Corporation	.. NO. 11

Asterisk	Explanation
1	Aetna Capital Management, LLC is the managing member of Aetna Partners Diversified Fund, LLC ("APDF"). APDF is a fund of hedge funds and certain other subsidiaries of CVS Health Group invest in this fund, which does not confer any managing or controlling ownership interests in APDF. Aetna Life Insurance Company is the largest investor in APDF and currently owns a majority of the non-managing member interests of APDF.
2	Aetna ACO Holdings Inc. is owned by Aetna Life Insurance Company (302 shares); Aetna Health Inc. (PA) (198 shares); and Aetna Health Holdings, LLC (1 share).
3	Aetna Global Benefits (Middle East) LLC is also 51% owned by Euro Gulf LLC, Aetna's Nominee.
4	PHPSNE Parent Corporation is 55% owned by AUSHC Holdings, Inc. The remaining 45% is owned by thirteen different hospitals (non-affiliates) which are shareholders with varying degrees of ownership.
5	Banner Health and Aetna Health Insurance Holding Company LLC is also 50% owned by Banner Health.
6	Allina Health and Aetna Insurance Holding Company LLC is also 50% owned by Allina Health System.
7	Coram Clinical Trials, Inc. is 75% owned by CVS Pharmacy, Inc. and 25% owned by Aetna Life Insurance Company.
8	CVS Cabot Holdings Inc is owned 99.72% by Coram Clinical Trials, Inc. and 0.28% owned by Aetna Inc.
9	CVS Shaw Holdings Inc is owned 99.72% by Coram Clinical Trials, Inc. and 0.28% owned by Aetna Inc.
10	Omnicare, LLC is 0.28% owned by Aetna Inc. The Company is also owned by CVS Cabot Holdings Inc. and CVS Shaw Holdings Inc., with 49.86% each ownership.
11	CVS Health Venture Fund, LP is also 0.1% owned by CVS Health Ventures Fund GP, LLC
12	Medical Examinations of New York, P.C. is owned via a nominee.
13	Effective April 1, 2024, Texas Health + Aetna Health Insurance Company merged into Aetna Life Insurance Company
14	Effective April 1, 2024, Texas Health + Aetna Health Plan Inc. merged into Aetna Health Inc. (Texas).

SUPPLEMENTAL EXHIBITS AND SCHEDULES INTERROGATORIES

The following supplemental reports are required to be filed as part of your statement filing. However, in the event that your company does not transact the type of business for which the special report must be filed, your response of NO to the specific interrogatory will be accepted in lieu of filing a "NONE" report and a bar code will be printed below. If the supplement is required of your company but is not being filed for whatever reason enter SEE EXPLANATION and provide an explanation following the interrogatory questions.

	Response
1. Will the Medicare Part D Coverage Supplement be filed with the state of domicile and the NAIC with this statement?	NO

AUGUST FILING

2. Will the regulator-only (non-public) Communication of Internal Control Related Matters Noted in Audit be filed with the state of domicile and electronically with the NAIC (as a regulator-only non-public document) by August 1? The response for 1st and 3rd quarters should be N/A. A NO response resulting with a bar code is only appropriate in the 2nd quarter.	N/A
--	-----

Explanation:

1. Business not written

Bar Code:

1. Medicare Part D Coverage Supplement [Document Identifier 365]



OVERFLOW PAGE FOR WRITE-INS

NONE

STATEMENT AS OF MARCH 31, 2024 OF THE Coventry Health Care of Missouri, Inc.

SCHEDULE A - VERIFICATION

Real Estate

	1 Year to Date	2 Prior Year Ended December 31
1. Book/adjusted carrying value, December 31 of prior year		
2. Cost of acquired:		
2.1 Actual cost at time of acquisition		
2.2 Additional investment made after acquisition		
3. Current year change in encumbrances		
4. Total gain (loss) on disposals		
5. Deduct amounts received on disposals		
6. Total foreign exchange change in book/adjusted carrying value		
7. Deduct current year's other than temporary impairment recognized		
8. Deduct current year's depreciation		
9. Book/adjusted carrying value at the end of current period (Lines 1+2+3+4-5+6-7-8)		
10. Deduct total nonadmitted amounts		
11. Statement value at end of current period (Line 9 minus Line 10)		

NONE

SCHEDULE B - VERIFICATION

Mortgage Loans

	1 Year to Date	2 Prior Year Ended December 31
1. Book value/recorded investment excluding accrued interest, December 31 of prior year	5,801,343	3,998,637
2. Cost of acquired:		
2.1 Actual cost at time of acquisition		5,535,000
2.2 Additional investment made after acquisition	2,029	272,971
3. Capitalized deferred interest and other		0
4. Accrual of discount		0
5. Unrealized valuation increase/(decrease)		0
6. Total gain (loss) on disposals		
7. Deduct amounts received on disposals	10,081	3,898,926
8. Deduct amortization of premium and mortgage interest points and commitment fees		106,339
9. Total foreign exchange change in book value/recorded investment excluding accrued interest		0
10. Deduct current year's other than temporary impairment recognized		0
11. Book value/recorded investment excluding accrued interest at end of current period (Lines 1+2+3+4+5+6-7-8+9-10)	5,793,291	5,801,343
12. Total valuation allowance		
13. Subtotal (Line 11 plus Line 12)	5,793,291	5,801,343
14. Deduct total nonadmitted amounts		0
15. Statement value at end of current period (Line 13 minus Line 14)	5,793,291	5,801,343

SCHEDULE BA - VERIFICATION

Other Long-Term Invested Assets

	1 Year to Date	2 Prior Year Ended December 31
1. Book/adjusted carrying value, December 31 of prior year	9,143,798	8,468,333
2. Cost of acquired:		
2.1 Actual cost at time of acquisition		
2.2 Additional investment made after acquisition		
3. Capitalized deferred interest and other	236,755	675,465
4. Accrual of discount		0
5. Unrealized valuation increase/(decrease)		0
6. Total gain (loss) on disposals		
7. Deduct amounts received on disposals		
8. Deduct amortization of premium and depreciation		0
9. Total foreign exchange change in book/adjusted carrying value		0
10. Deduct current year's other than temporary impairment recognized		0
11. Book/adjusted carrying value at end of current period (Lines 1+2+3+4+5+6-7-8+9-10)	9,380,553	9,143,798
12. Deduct total nonadmitted amounts		
13. Statement value at end of current period (Line 11 minus Line 12)	9,380,553	9,143,798

SCHEDULE D - VERIFICATION

Bonds and Stocks

	1 Year to Date	2 Prior Year Ended December 31
1. Book/adjusted carrying value of bonds and stocks, December 31 of prior year	301,241,224	248,395,858
2. Cost of bonds and stocks acquired	64,704,117	121,156,297
3. Accrual of discount	250,946	779,811
4. Unrealized valuation increase/(decrease)	(138,416)	1,464,364
5. Total gain (loss) on disposals	(327,676)	(2,819,683)
6. Deduct consideration for bonds and stocks disposed of	32,796,106	66,034,641
7. Deduct amortization of premium	242,042	926,452
8. Total foreign exchange change in book/adjusted carrying value	0	0
9. Deduct current year's other than temporary impairment recognized	0	621,805
10. Total investment income recognized as a result of prepayment penalties and/or acceleration fees	(130,000)	(152,525)
11. Book/adjusted carrying value at end of current period (Lines 1+2+3+4+5-6-7+8-9+10)	332,562,047	301,241,224
12. Deduct total nonadmitted amounts	0	0
13. Statement value at end of current period (Line 11 minus Line 12)	332,562,047	301,241,224

STATEMENT AS OF MARCH 31, 2024 OF THE Coventry Health Care of Missouri, Inc.

SCHEDULE D - PART 1B

Showing the Acquisitions, Dispositions and Non-Trading Activity
During the Current Quarter for all Bonds and Preferred Stock by NAIC Designation

NAIC Designation	1 Book/Adjusted Carrying Value Beginning of Current Quarter	2 Acquisitions During Current Quarter	3 Dispositions During Current Quarter	4 Non-Trading Activity During Current Quarter	5 Book/Adjusted Carrying Value End of First Quarter	6 Book/Adjusted Carrying Value End of Second Quarter	7 Book/Adjusted Carrying Value End of Third Quarter	8 Book/Adjusted Carrying Value December 31 Prior Year
BONDS								
1. NAIC 1 (a)	276,150,891	416,113,614	403,733,972	871,820	289,402,353	0	0	276,150,891
2. NAIC 2 (a)	57,092,410	15,608,179	5,038,682	284,156	67,946,063	0	0	57,092,410
3. NAIC 3 (a)	34,599,734	4,255,365	1,415,141	(298,465)	37,141,493	0	0	34,599,734
4. NAIC 4 (a)	7,162,447	3,170,125	1,000,000	(27,475)	9,305,097	0	0	7,162,447
5. NAIC 5 (a)	0	820,300	0	2,436	822,736	0	0	0
6. NAIC 6 (a)	0	0	0	0	0	0	0	0
7. Total Bonds	375,005,482	439,967,583	411,187,795	832,472	404,617,742	0	0	375,005,482
PREFERRED STOCK								
8. NAIC 1	0	0	0	0	0	0	0	0
9. NAIC 2	0	0	0	0	0	0	0	0
10. NAIC 3	0	0	0	0	0	0	0	0
11. NAIC 4	0	0	0	0	0	0	0	0
12. NAIC 5	0	0	0	0	0	0	0	0
13. NAIC 6	0	0	0	0	0	0	0	0
14. Total Preferred Stock	0	0	0	0	0	0	0	0
15. Total Bonds and Preferred Stock	375,005,482	439,967,583	411,187,795	832,472	404,617,742	0	0	375,005,482

(a) Book/Adjusted Carrying Value column for the end of the current reporting period includes the following amount of short-term and cash equivalent bonds by NAIC designation:

NAIC 1 \$ 72,055,696 ; NAIC 2 \$ 0 ; NAIC 3 \$ 0 ; NAIC 4 \$ 0 ; NAIC 5 \$ 0 ; NAIC 6 \$ 0

Schedule DA - Part 1 - Short-Term Investments

N O N E

Schedule DA - Verification - Short-Term Investments

N O N E

Schedule DB - Part A - Verification - Options, Caps, Floors, Collars, Swaps and Forwards

N O N E

Schedule DB - Part B - Verification - Futures Contracts

N O N E

Schedule DB - Part C - Section 1 - Replication (Synthetic Asset) Transactions (RSATs) Open

N O N E

Schedule DB-Part C-Section 2-Reconciliation of Replication (Synthetic Asset) Transactions Open

N O N E

Schedule DB - Verification - Book/Adjusted Carrying Value, Fair Value and Potential Exposure of
Derivatives

N O N E

SCHEDULE E - PART 2 - VERIFICATION

(Cash Equivalents)

	1	2
	Year To Date	Prior Year Ended December 31
1. Book/adjusted carrying value, December 31 of prior year	73,764,409	54,163,943
2. Cost of cash equivalents acquired	375,306,314	1,578,052,379
3. Accrual of discount	961,984	3,471,570
4. Unrealized valuation increase/(decrease)	0	0
5. Total gain (loss) on disposals	(45)	129
6. Deduct consideration received on disposals	377,976,256	1,561,923,612
7. Deduct amortization of premium	0	0
8. Total foreign exchange change in book/adjusted carrying value	0	0
9. Deduct current year's other than temporary impairment recognized	0	0
10. Book/adjusted carrying value at end of current period (Lines 1+2+3+4+5-6-7+8-9)	72,056,406	73,764,409
11. Deduct total nonadmitted amounts	0	0
12. Statement value at end of current period (Line 10 minus Line 11)	72,056,406	73,764,409

STATEMENT AS OF MARCH 31, 2024 OF THE Coventry Health Care of Missouri, Inc.

SCHEDULE A - PART 2

Showing All Real Estate ACQUIRED AND ADDITIONS MADE During the Current Quarter

1 Description of Property	Location		4 Date Acquired	5 Name of Vendor	6 Actual Cost at Time of Acquisition	7 Amount of Encumbrances	8 Book/Adjusted Carrying Value Less Encumbrances	9 Additional Investment Made After Acquisition
	2 City	3 State						
NONE								
0399999 - Totals								

SCHEDULE A - PART 3

Showing All Real Estate DISPOSED During the Quarter, Including Payments During the Final Year on "Sales Under Contract"

1 Description of Property	Location		4 Disposal Date	5 Name of Purchaser	6 Actual Cost	7 Expended for Additions, Permanent Improvements and Changes in Encumbrances	8 Book/Adjusted Carrying Value Less Encumbrances Prior Year	Change in Book/Adjusted Carrying Value Less Encumbrances					14 Book/Adjusted Carrying Value Less Encumbrances on Disposal	15 Amounts Received During Year	16 Foreign Exchange Gain (Loss) on Disposal	17 Realized Gain (Loss) on Disposal	18 Total Gain (Loss) on Disposal	19 Gross Income Earned Less Interest Incurred on Encumbrances	20 Taxes, Repairs and Expenses Incurred
	2 City	3 State						9 Current Year's Depreciation	10 Current Year's Other-Than-Temporary Impairment Recognized	11 Current Year's Change in Encumbrances	12 Total Change in Book/Adjusted Carrying Value (11-9-10)	13 Total Foreign Exchange Change in Book/Adjusted Carrying Value							
NONE																			
0399999 - Totals																			

E01

STATEMENT AS OF MARCH 31, 2024 OF THE Coventry Health Care of Missouri, Inc.

SCHEDULE B - PART 2

Showing All Mortgage Loans ACQUIRED AND ADDITIONS MADE During the Current Quarter

1 Loan Number	2 Location		3 State	4 Loan Type	5 Date Acquired	6 Rate of Interest	7 Actual Cost at Time of Acquisition	8 Additional Investment Made After Acquisition	9 Value of Land and Buildings
	City								
1004648	JACKSONVILLE		FL		04/28/2023	6.000	0	2,029	3,150,000
0599999. Mortgages in good standing - Commercial mortgages-all other							0	2,029	3,150,000
0899999. Total Mortgages in good standing							0	2,029	3,150,000
1699999. Total - Restructured Mortgages							0	0	0
2499999. Total - Mortgages with overdue interest over 90 days							0	0	0
3299999. Total - Mortgages in the process of foreclosure							0	0	0
3399999 - Totals							0	2,029	3,150,000

SCHEDULE B - PART 3

Showing All Mortgage Loans DISPOSED, Transferred or Repaid During the Current Quarter

1 Loan Number	2 Location		4 Loan Type	5 Date Acquired	6 Disposal Date	7 Book Value/Recorded Investment Excluding Accrued Interest Prior Year	8 Change in Book Value/Recorded Investment					14 Book Value/Recorded Investment Excluding Accrued Interest on Disposal	15 Consid-eration	16 Foreign Exchange Gain (Loss) on Disposal	17 Realized Gain (Loss) on Disposal	18 Total Gain (Loss) on Disposal	
	City	State					8 Unrealized Valuation Increase/(Decrease)	9 Current Year's (Amortization) /Accretion	10 Current Year's Other-Than-Temporary Impairment Recognized	11 Capitalized Deferred Interest and Other	12 Total Change in Book Value (8+9-10+11)						13 Total Foreign Exchange Change in Book Value
1004662	HOUSTON	TX		09/21/2023		3,743,371	0	0	0	0	0	0	10,081	0	0	0	
0299999. Mortgages with partial repayments							3,743,371	0	0	0	0	0	0	10,081	0	0	0
0599999 - Totals							3,743,371	0	0	0	0	0	0	10,081	0	0	0

STATEMENT AS OF MARCH 31, 2024 OF THE Coventry Health Care of Missouri, Inc.

SCHEDULE BA - PART 2

Showing Other Long-Term Invested Assets ACQUIRED AND ADDITIONS MADE During the Current Quarter

1 CUSIP Identification	2 Name or Description	Location		5 Name of Vendor or General Partner	6 NAIC Designation, NAIC Designation Modifier and SVO Admini- strative Symbol	7 Date Originally Acquired	8 Type and Strategy	9 Actual Cost at Time of Acquisition	10 Additional Investment Made After Acquisition	11 Amount of Encumbrances	12 Commitment for Additional Investment	13 Percentage of Ownership
		3 City	4 State									
NONE												
6299999 - Totals												XXX

SCHEDULE BA - PART 3

Showing Other Long-Term Invested Assets DISPOSED, Transferred or Repaid During the Current Quarter

1 CUSIP Identification	2 Name or Description	Location		5 Name of Purchaser or Nature of Disposal	6 Date Originally Acquired	7 Disposal Date	8 Book/ Adjusted Carrying Value Less Encum- brances, Prior Year	Change in Book/Adjusted Carrying Value						15 Book/ Adjusted Carrying Value Less Encum- brances on Disposal	16 Consid- eration	17 Foreign Exchange Gain (Loss) on Disposal	18 Realized Gain (Loss) on Disposal	19 Total Gain (Loss) on Disposal	20 Invest- ment Income
		3 City	4 State					9 Unrealized Valuation Increase/ (De- crease)	10 Current Year's (Depre- ciation) or (Amorti- zation)/ Accretion	11 Current Year's Other Than Tempor- ary Impair- ment Recog- nized	12 Capital- ized Deferred Interest and Other	13 Total Change in Book/ Adjusted Carrying Value (9+10- 11+12)	14 Total Foreign Exchange Change in Book/ Adjusted Carrying Value						
NONE																			
6299999 - Totals																			

STATEMENT AS OF MARCH 31, 2024 OF THE Coventry Health Care of Missouri, Inc.

SCHEDULE D - PART 3

Show All Long-Term Bonds and Stock Acquired During the Current Quarter

1	2	3	4	5	6	7	8	9	10
CUSIP Identification	Description	Foreign	Date Acquired	Name of Vendor	Number of Shares of Stock	Actual Cost	Par Value	Paid for Accrued Interest and Dividends	NAIC Designation, NAIC Designation Modifier and SVO Administrative Symbol
912810-TX-6	US TREASURY NOTE/BOND 4.250% 02/15/54		03/27/2024	Evercore Group LLC		1,958,438	2,000,000	9,808	1.A
91282C-JV-4	US TREASURY NOTE/BOND 4.250% 01/31/26		02/12/2024	Strategas Securities, LLC		4,981,055	5,000,000	7,589	1.A
91282C-JII-2	US TREASURY NOTE/BOND 4.000% 01/31/29		02/12/2024	Strategas Securities, LLC		4,973,047	5,000,000	7,143	1.A
0109999999. Subtotal - Bonds - U.S. Governments						11,912,540	12,000,000	24,540	XXX
900123-CO-1	TURKEY REPUBLIC OF SR UNSECURED 6.125% 10/24/28	D.	01/03/2024	MarketAxess		1,552,000	1,600,000	19,328	4.C FE
V36283-AE-5	REPUBLIC OF GABON SR UNSECURED 7.000% 11/24/31	D.	02/12/2024	MarketAxess		820,300	1,000,000	15,556	5.A FE
X77765-CV-9	REPUBLIC OF SERBIA SR UNSECURED 6.250% 05/26/28	D.	02/16/2024	HSBC Securities - 94787		1,020,000	1,000,000	14,757	3.A FE
0309999999. Subtotal - Bonds - All Other Governments						3,392,300	3,600,000	49,641	XXX
13063E-AN-6	CALIFORNIA ST 5.000% 09/01/39		03/27/2024	JPM-CHASE		1,733,175	1,500,000	0	1.C FE
0509999999. Subtotal - Bonds - U.S. States, Territories and Possessions						1,733,175	1,500,000	0	XXX
64966S-CS-3	NEW YORK NY SER D 5.250% 04/01/54		03/27/2024	JEFFRIES		1,090,770	1,000,000	0	1.C FE
0709999999. Subtotal - Bonds - U.S. Political Subdivisions of States, Territories and Possessions						1,090,770	1,000,000	0	XXX
472682-ZE-6	JEFFERSON CNTY ALA SWR REV REF-WARRANTS 5.000% 10/01/35		01/11/2024	Raymond James		2,824,875	2,500,000	0	2.A FE
646140-FZ-1	NEW JERSEY ST TURNPIKE AUTH SER B 5.250% 01/01/54		03/20/2024	JPM-CHASE		1,652,520	1,500,000	0	1.E FE
873519-ON-5	TACOMA WA ELEC SYS REVENUE REVENUE BONDS 5.000% 01/01/54		01/31/2024	JPM-CHASE		1,352,175	1,250,000	0	1.D FE
0909999999. Subtotal - Bonds - U.S. Special Revenues						5,829,570	5,250,000	0	XXX
00901U-AA-1	AIMCO SERIES 24-22A CLASS A 6.810% 04/19/37		03/08/2024	NOMURA SECURITIES		2,000,000	2,000,000	0	1.A Z
02352N-AA-7	AMER SPORTS COMPANY 1ST LIEN 6.750% 02/16/31		02/09/2024	GOLDMAN SACHS & CO		500,000	500,000	0	4.A FE
03762Y-AT-4	APIDOS CLO SERIES 16-25A CLASS A2R2 7.118% 10/20/31		03/14/2024	Royal Bank and Trust		1,000,000	1,000,000	13,143	1.A FE
12008R-AS-6	BUILDERS FIRSTSOURCE INC SR UNSECURED 6.375% 03/01/34		02/26/2024	BOFA SECURITIES INC		500,000	500,000	0	3.C FE
143111-AL-6	CARLYLE GLOBAL MARKET STRATEGI SERIES 22-3A CLASS AR 6.868% 04/20/37		02/15/2024	Citigroup Global Markets Inc		2,000,000	2,000,000	0	1.A FE
143111-AN-2	CARLYLE GLOBAL MARKET STRATEGI SERIES 22-3A CLASS BR 7.368% 04/20/37		02/15/2024	Citigroup Global Markets Inc		1,000,000	1,000,000	0	1.C FE
17275R-BO-4	CISCO SYSTEMS INC SR UNSECURED 4.800% 02/26/27		02/21/2024	DEUTSCHE BANK		998,700	1,000,000	0	1.E FE
29002A-AL-8	ELMWOOD CLO 20 LTD SERIES 22-7A CLASS AR 6.817% 01/17/37		01/25/2024	Royal Bank and Trust		2,000,000	2,000,000	0	1.A FE
345397-ZW-6	FORD MOTOR CREDIT CO LLC SR UNSECURED 4.542% 08/01/26		03/06/2024	WACHOVIA		971,520	1,000,000	4,668	2.C FE
378272-BS-6	GLENOCRE FUNDING LLC SR UNSECURED 5.371% 04/04/29		03/26/2024	Sumitomo Mitsui Financial Grp		2,000,000	2,000,000	0	2.A FE
389375-AL-0	GRAY TELEVISION INC SR UNSECURED 4.750% 10/15/30		02/07/2024	WACHOVIA		362,500	500,000	7,521	4.B FE
431571-AF-5	HILLENBRAND INC SR UNSECURED 6.250% 02/15/29		02/07/2024	HSBC SEC INC		500,000	500,000	0	3.A FE
449276-AB-0	IBM INTERNAT CAPITAL SR UNSECURED 4.600% 02/05/27		01/29/2024	BOFA SECURITIES INC		998,420	1,000,000	0	1.G FE
456873-AD-0	INGERSOLL-RAND LUX FINAN SR UNSECURED 3.800% 03/21/29		03/26/2024	WACHOVIA		475,650	500,000	369	2.A FE
49271V-AU-4	KEURIG DR PEPPER INC. SR UNSECURED 5.200% 03/15/31		03/04/2024	CHASE SECURITIES		998,010	1,000,000	0	2.A FE
50012L-AC-8	KODIAK GAS SERVICES LLC SR UNSECURED 7.250% 02/15/29		02/06/2024	Royal Bank and Trust		505,625	500,000	604	4.A FE
532457-CJ-5	LILLY ELI SR UNSECURED 4.500% 02/09/27		02/07/2024	Deutsche Bank - 2485 DTC		999,470	1,000,000	0	1.E FE
599191-AA-1	MILEAGE PLUS HLDINGS LLC 1ST LIEN 6.500% 06/20/27		02/07/2024	Baird (Robert W)		703,500	700,000	6,193	2.C FE
640969-AJ-0	NEUBERGER BERMAN CLO LTD SERIES 24-55A CLASS D1 8.818% 04/22/38		03/14/2024	WACHOVIA		1,800,000	1,800,000	0	2.B Z
668771-AK-4	NORTONLIFELOCK INC SR UNSECURED 6.750% 09/30/27		02/05/2024	Sumitomo Mitsui Financial Grp		502,500	500,000	11,906	3.C FE
67575X-AW-1	OCTAGON INVESTMENT PARTNERS 31 SERIES 17-1A CLASS ARR 6.468% 07/20/30		02/29/2024	MIZUHO SECURITIES USA		1,500,000	1,500,000	0	1.A FE
67706J-AA-2	OAK HILL CREDIT PARTNERS SERIES 24-18A CLASS A1 6.818% 04/20/37		03/08/2024	MORGAN STANLEY		2,000,000	2,000,000	0	1.A Z
68622T-AA-9	ORGANON & CO/ORG SECURED 4.125% 04/30/28		01/05/2024	MarketAxess		453,490	500,000	3,953	3.B FE
69121J-AA-5	BLUE OIL TECHNOLOGY FIN SR UNSECURED 6.750% 04/04/29		03/27/2024	MIZUHO SECURITIES USA		987,990	1,000,000	0	2.C Z
69371R-SB-0	PACCAR FIN CORP SR UNSECURED 4.600% 01/31/29		01/24/2024	TD Securities (USA)		748,778	750,000	0	1.E FE
69688M-AN-5	PALMER SQUARE CLO LTD SERIES 18-2A CLASS A1R 6.844% 04/16/37		03/19/2024	Citigroup Global Markets Inc		1,000,000	1,000,000	0	1.A FE
709599-BY-9	PENSKE TRUCK LEASING SR UNSECURED 5.350% 01/12/27		01/09/2024	CHASE SECURITIES		998,910	1,000,000	0	2.B FE
713466-AA-8	PEPSICO SINGAPORE FIN SR UNSECURED 4.650% 02/16/27		02/12/2024	DEUTSCHE BANK		1,499,505	1,500,000	0	1.E FE
75884R-BB-8	REGENCY CENTERS SR UNSECURED 5.250% 01/15/34		01/08/2024	BOFA SECURITIES INC		996,170	1,000,000	0	2.A FE
780153-BU-5	ROYAL CARIBBEAN CRUISE SR UNSECURED 6.250% 03/15/32		02/22/2024	BTIG		100,625	100,000	0	3.B FE
79546V-AQ-9	SALLY HOLDINGS SALLY CAP SR UNSECURED 6.750% 03/01/32		02/13/2024	BOFA SECURITIES INC		248,750	250,000	0	3.C FE
81728U-AB-0	SENSATA TECHNOLOGIES INC SR UNSECURED 3.750% 02/15/31		02/21/2024	Seaport Group		430,000	500,000	417	3.B FE

STATEMENT AS OF MARCH 31, 2024 OF THE Coventry Health Care of Missouri, Inc.

SCHEDULE D - PART 3

Show All Long-Term Bonds and Stock Acquired During the Current Quarter

1 CUSIP Identification	2 Description	3 Foreign	4 Date Acquired	5 Name of Vendor	6 Number of Shares of Stock	7 Actual Cost	8 Par Value	9 Paid for Accrued Interest and Dividends	10 NAIC Designation, NAIC Designation Modifier and SVO Admini- strative Symbol
832726-AA-9	SMURFIT KAPPA TREASURY SR UNSECURED 5.200% 01/15/30		03/26/2024	Citigroup Global Markets Inc		998,800	1,000,000	0	2.C FE
84857L-AC-5	SPIRE INC SR UNSECURED 5.300% 03/01/26		02/05/2024	WACHOVIA		999,900	1,000,000	0	2.B FE
87249Q-AL-4	TIOP QLO LTD SERIES 18-11A CLASS AR 6.855% 04/25/37		03/26/2024	BANC AMERICA		1,999,999	2,000,000	0	1.A Z
91324P-FA-5	UNITEDHEALTH GROUP INC SR UNSECURED 4.900% 04/15/31		03/19/2024	BOFA SECURITIES INC		993,010	1,000,000	0	1.F FE
931427-AT-5	WALGREENS BOOT ALLIANCE SR UNSECURED 4.100% 04/15/50		03/27/2024	WACHOVIA		365,000	500,000	9,453	2.C FE
95081Q-AR-5	WESCO DISTRIBUTION INC SR UNSECURED 6.625% 03/15/32		02/26/2024	GOLDMAN SACHS & CO		500,000	500,000	0	3.B FE
097751-CB-5	BOMBARDIER INC SR UNSECURED 7.250% 07/01/31	A	03/25/2024	Royal Bank and Trust		250,000	250,000	0	4.B FE
78016H-ZT-0	ROYAL BANK OF CANADA SR UNSECURED 4.875% 01/19/27	A	01/10/2024	Royal Bank and Trust		999,750	1,000,000	0	1.E FE
89115A-2W-1	TORONTO DOMINION BANK SR UNSECURED 4.980% 04/05/27	A	03/26/2024	TD Securities (USA)		1,000,000	1,000,000	0	1.F FE
66753Y-AB-0	QORODOO INTL FINANCE SR UNSECURED 2.625% 04/08/31	D	03/20/2024	MarketAxess		859,190	1,000,000	11,958	1.F FE
1109999999. Subtotal - Bonds - Industrial and Miscellaneous (Unaffiliated)						40,745,762	41,350,000	70,185	XXX
2509999997. Total - Bonds - Part 3						64,704,117	64,700,000	144,366	XXX
2509999998. Total - Bonds - Part 5						XXX	XXX	XXX	XXX
2509999999. Total - Bonds						64,704,117	64,700,000	144,366	XXX
4509999997. Total - Preferred Stocks - Part 3						0	XXX	0	XXX
4509999998. Total - Preferred Stocks - Part 5						XXX	XXX	XXX	XXX
4509999999. Total - Preferred Stocks						0	XXX	0	XXX
5989999997. Total - Common Stocks - Part 3						0	XXX	0	XXX
5989999998. Total - Common Stocks - Part 5						XXX	XXX	XXX	XXX
5989999999. Total - Common Stocks						0	XXX	0	XXX
5999999999. Total - Preferred and Common Stocks						0	XXX	0	XXX
6009999999 - Totals						64,704,117	XXX	144,366	XXX

STATEMENT AS OF MARCH 31, 2024 OF THE Coventry Health Care of Missouri, Inc.

SCHEDULE D - PART 4

Show All Long-Term Bonds and Stock Sold, Redeemed or Otherwise Disposed of During the Current Quarter

1	2	3	4	5	6	7	8	9	10	Change In Book/Adjusted Carrying Value					16	17	18	19	20	21	22
										11	12	13	14	15							
CUSIP Identification	Description	Foreign	Disposal Date	Name of Purchaser	Number of Shares of Stock	Consideration	Par Value	Actual Cost	Prior Year Book/Adjusted Carrying Value	Unrealized Valuation Increase/(Decrease)	Current Year's (Amortization)/Accretion	Current Year's Other Than Temporary Impairment Recognized	Total Change in Book/Adjusted Carrying Value (11 + 12 - 13)	Total Foreign Exchange Change in Book /Adjusted Carrying Value	Book/Adjusted Carrying Value at Disposal Date	Foreign Exchange Gain (Loss) on Disposal	Realized Gain (Loss) on Disposal	Total Gain (Loss) on Disposal	Bond Interest/Stock Dividends Received During Year	Stated Contractual Maturity Date	NAIC Designation, NAIC Designation Modifier and SVO Administrative Symbol
..36202D-QZ-7	GOVT NATL MTGE ASSN 11 POOL NO 003172 6.000% 12/20/31		03/01/2024	Paydown		258	258	257	257	0	1	0	1	0	258	0	0	0	3	12/20/2031	1.A
0109999999 Subtotal - Bonds - U.S. Governments										0	1	0	1	0	258	0	0	0	3	XXX	XXX
..91087B-AM-2	UNITED MEXICAN STATES SR UNSECURED 2.659% 05/24/31	D	02/16/2024	MarketAxess		1,240,335	1,500,000	1,425,750	1,439,206	0	997	0	997	0	1,440,204	0	(199,869)	(199,869)	9,639	05/24/2031	2.B FE
..P13435-AA-3	BANCO INTERNAC DEL PERU SUBORDINATED 6.625% 03/19/29	D	01/17/2024	Call 100.0000		240,000	240,000	262,560	238,800	1,922	(153)	0	1,769	0	240,569	0	(569)	(569)	5,212	03/19/2029	3.A FE
0309999999 Subtotal - Bonds - All Other Governments										1,922	844	0	2,766	0	1,680,773	0	(200,438)	(200,438)	14,851	XXX	XXX
..349461-DU-4	FORT WORTH TX INDEP SCH DIST 5.000% 02/15/35		03/26/2024	BANC AMERICA		1,317,398	1,125,000	1,365,053	1,347,107	0	(5,244)	0	(5,244)	0	1,341,862	0	(24,465)	(24,465)	34,844	02/15/2035	1.A FE
..467340-NB-6	JACKSON CNTY MO CONSOL SCH MO DIRECT DEPOSIT PROGRAM 5.000% 03/01/27		03/01/2024	Call 100.0000		1,000,000	1,000,000	1,180,070	1,003,452	0	(3,452)	0	(3,452)	0	1,000,000	0	0	0	25,000	03/01/2027	1.B FE
..705227-FZ-4	PECOS BARSTOW TOYAH TX INDEP S 4.000% 02/15/41		02/21/2024	PIPER, JAFFRAY & HOPWOOD		1,008,780	1,000,000	1,102,780	1,033,953	0	(4,344)	0	(4,344)	0	1,029,609	0	(20,829)	(20,829)	20,889	02/15/2041	1.A FE
0709999999 Subtotal - Bonds - U.S. Political Subdivisions of States, Territories and Possessions										3,326,178	3,125,000	0	(13,040)	0	3,371,471	0	(45,294)	(45,294)	80,733	XXX	XXX
..31283G-UE-5	FED HOME LOAN MTGE CORP GOLD POOL NO FGG00581 9.000% 03/01/25		03/01/2024	Paydown		14	14	15	14	0	0	0	0	0	14	0	0	0	0	03/01/2025	1.A
..31281X-R4-4	FED HOME LOAN MTGE CORP GOLD POOL NO G02307 5.000% 08/01/36		03/01/2024	Paydown		570	570	545	556	0	14	0	14	0	570	0	0	0	6	08/01/2036	1.A
..3128PS-QT-7	Freddie Mac POOL NO J13166 4.000% 10/01/25		03/01/2024	Paydown		495	495	505	496	0	(1)	0	(1)	0	495	0	0	0	3	10/01/2025	1.A
..312941-NJ-2	FED HOME LOAN MTGE CORP GOLD POOL NO A93093 4.500% 07/01/40		03/01/2024	Paydown		916	916	957	940	0	(24)	0	(24)	0	916	0	0	0	7	07/01/2040	1.A
..3132DM-6B-6	FED NATL MTGE ASSN POOL NO FR SD0866 3.500% 02/01/52		03/01/2024	Paydown		59,502	59,502	62,342	62,178	0	(2,676)	0	(2,676)	0	59,502	0	0	0	303	02/01/2052	1.A
..3132DV-LZ-6	FNMA POOL NO FR SD7544 3.000% 07/01/51		03/25/2024	JPM-CHASE		658,596	754,837	678,294	678,314	0	507	0	507	0	678,821	0	(20,226)	(20,226)	7,360	07/01/2051	1.A
..3132DV-LZ-6	FNMA POOL NO FR SD7544 3.000% 07/01/51		03/01/2024	Paydown		14,828	14,828	13,324	13,325	0	1,503	0	1,503	0	14,828	0	0	0	74	07/01/2051	1.A
..31385C-3A-9	FED NATL MTGE ASSN POOL NO 540893 6.500% 01/01/31		03/01/2024	Paydown		14	14	14	14	0	0	0	0	0	14	0	0	0	0	01/01/2031	1.A
..3138ER-P9-5	FANNIE MAE POOL NO 3.000% 11/01/31		03/01/2024	Paydown		33,266	33,266	33,614	33,468	0	(202)	0	(202)	0	33,266	0	0	0	167	11/01/2031	1.A
..31402D-W8-0	FED NATL MTGE ASSN POOL NO 735171 5.883% 01/01/35		03/01/2024	Paydown		124	124	122	123	0	1	0	1	0	124	0	0	0	1	01/01/2035	1.A
..3140KR-RB-7	FED NATL MTGE ASSN POOL NO B05881 2.500% 11/01/50		03/01/2024	Paydown		25,340	25,340	26,722	26,582	0	(1,241)	0	(1,241)	0	25,340	0	0	0	123	11/01/2050	1.A
..3140M2-SF-0	FED NATL MTGE ASSN POOL NO FN BU1417 3.000% 01/01/52		03/01/2024	Paydown		22,173	22,173	22,710	22,677	0	(505)	0	(505)	0	22,173	0	0	0	124	01/01/2052	1.A
..3140M2-SR-4	FED NATL MTGE ASSN POOL NO FN BU1427 2.500% 01/01/52		03/01/2024	Paydown		22,721	22,721	22,922	22,908	0	(187)	0	(187)	0	22,721	0	0	0	88	01/01/2052	1.A
..3140MG-HP-9	FED NATL MTGE ASSN POOL NO FN BV2937 2.000% 03/01/52		03/01/2024	Paydown		25,915	25,915	20,283	20,338	0	5,577	0	5,577	0	25,915	0	0	0	76	03/01/2052	1.A
..3140QL-MX-1	FED NATL MTGE ASSN POOL NO FN CB1273 2.000% 08/01/51		03/01/2024	Paydown		20,172	20,172	15,541	15,574	0	4,598	0	4,598	0	20,172	0	0	0	76	08/01/2051	1.A
..3140X3-CP-1	FED NATL MTGE ASSN POOL FMO077 3.000% 03/01/50		03/01/2024	Paydown		7,766	7,766	8,196	8,146	0	(380)	0	(380)	0	7,766	0	0	0	38	03/01/2050	1.A
..31410Q-QW-4	FED NATL MTGE ASSN POOL NO 894269 5.885% 10/01/36		03/01/2024	Paydown		23	23	23	23	0	0	0	0	0	23	0	0	0	0	10/01/2036	1.A
..31411E-Y9-2	FED NATL MTGE ASSN POOL NO 906236 6.057% 01/01/37		03/01/2024	Paydown		50	50	50	50	0	0	0	0	0	50	0	0	0	0	01/01/2037	1.A
..31411U-XT-3	FED NATL MTGE ASSN POOL NO 915190 5.330% 04/01/37		03/01/2024	Paydown		86	86	87	86	0	0	0	0	0	86	0	0	0	1	04/01/2037	1.A
..575579-L4-7	MASSACHUSETTS BAY TRANS AUTH REF-SUBORDINATE-SER A-1 4.000% 07/01/39		01/02/2024	JEFFRIES		3,160,770	3,000,000	3,052,290	3,048,626	0	(56)	0	(56)	0	3,048,570	0	112,200	112,200	61,000	07/01/2039	1.D FE

E05

STATEMENT AS OF MARCH 31, 2024 OF THE Coventry Health Care of Missouri, Inc.

SCHEDULE D - PART 4

Show All Long-Term Bonds and Stock Sold, Redeemed or Otherwise Disposed of During the Current Quarter

1	2	3	4	5	6	7	8	9	10	Change In Book/Adjusted Carrying Value					16	17	18	19	20	21	22
										11	12	13	14	15							
CUSIP Identification	Description	Foreign	Disposal Date	Name of Purchaser	Number of Shares of Stock	Consideration	Par Value	Actual Cost	Prior Year Book/Adjusted Carrying Value	Unrealized Valuation Increase/(Decrease)	Current Year's (Amortization)/Accretion	Current Year's Other Than Temporary Impairment Recognized	Total Change in Book/Adjusted Carrying Value (11 + 12 - 13)	Total Foreign Exchange Change in Book /Adjusted Carrying Value	Book/Adjusted Carrying Value at Disposal Date	Foreign Exchange Gain (Loss) on Disposal	Realized Gain (Loss) on Disposal	Total Gain (Loss) on Disposal	Bond Interest/Stock Dividends Received During Year	Stated Contractual Maturity Date	NAIC Designation, NAIC Designation Modifier and SVO Administrative Symbol
090999999. Subtotal - Bonds - U.S. Special Revenues						4,053,341	3,988,812	3,958,556	3,954,438	0	6,928	0	6,928	0	3,961,366	0	91,974	91,974	69,447	XXX	XXX
..00140N-AQ-3	AIMCO SERIES 20-11A CLASS BR 7.179% 10/17/34		03/04/2024	DEUTSCHE BANK		1,001,000	1,000,000	1,000,000	1,000,000	0	0	0	0	1,000,000	0	1,000	1,000	28,336	10/17/2034	1.C FE	
..02352N-AA-7	AMER SPORTS COMPANY 1ST LIEN 6.750% 02/16/31		02/12/2024	BTIG		505,000	500,000	500,000	0	0	0	0	500,000	0	5,000	5,000	0	02/16/2031	4.A FE		
..06051G-KG-3	BANK OF AMERICA NA SR UNSECURED 1.843% 02/04/25		02/04/2024	Call 100.0000		2,000,000	2,000,000	2,000,000	2,000,000	0	0	0	2,000,000	0	0	0	18,430	02/04/2025	1.G FE		
..09630Q-AN-1	BLUEMOUNTAIN CLO LTD SERIES 20-30A CLASS BR 7.214% 04/15/35		03/25/2024	Scotiabank		1,497,000	1,500,000	1,500,000	1,500,000	0	0	0	1,500,000	0	(3,000)	(3,000)	49,298	04/15/2035	1.B FE		
..12548M-BF-1	CIFC FUNDING LTD SERIES 15-1A CLASS ARR 6.689% 01/22/31		01/22/2024	Paydown		224,838	224,838	224,555	224,209	0	630	0	630	224,838	0	0	0	3,855	01/22/2031	1.A FE	
..125523-AG-5	CIGNA CORP SR UNSECURED 4.125% 11/15/25		02/22/2024	Call 95.5050		1,910,100	2,000,000	2,148,240	2,070,573	0	(5,782)	0	(5,782)	2,064,790	0	0	0	(132,461)	11/15/2025	2.A FE	
..12560E-AQ-9	CIFC FUNDING LTD SERIES 20-3A CLASS BR 7.230% 10/20/34		03/26/2024	DEUTSCHE BANK		1,000,750	1,000,000	1,000,000	1,000,000	0	0	0	0	1,000,000	0	750	750	32,388	10/20/2034	1.C FE	
..14310M-AW-7	CARLYLE GLOBAL MARKET STRATEGI SERIES 14-1A CLASS A1R2 6.548% 04/17/31		01/17/2024	Paydown		111,065	111,065	110,654	110,518	0	546	0	546	111,065	0	0	0	1,883	04/17/2031	1.A FE	
..143658-BJ-0	CARNIVAL CORP 2ND LIEN 9.875% 08/01/27		02/01/2024	Call 104.9380		524,690	500,000	516,250	510,799	0	3,335	0	3,335	514,134	0	(14,134)	(14,134)	49,378	08/01/2027	3.C FE	
..26246B-AN-4	DRYDEN SENIOR LOAN FUND SERIES 20-85A CLASS B 7.176% 10/15/35		02/09/2024	WACHOVIA		997,980	1,000,000	1,000,000	1,000,000	0	0	0	0	1,000,000	0	(2,020)	(2,020)	24,122	10/15/2035	1.C FE	
..38141G-ZH-0	GOLDMAN SACHS GROUP SR UNSECURED 1.757% 01/24/25		01/24/2024	Call 100.0000		1,000,000	1,000,000	1,000,000	1,000,000	0	0	0	0	1,000,000	0	0	0	8,785	01/24/2025	1.F FE	
..48253H-AQ-8	KKR FINANCIAL CLO LTD SERIES 26 CLASS BR 7.276% 10/15/34		02/05/2024	CHASE SECURITIES		997,800	1,000,000	1,000,000	1,000,000	0	0	0	0	1,000,000	0	(2,200)	(2,200)	23,242	10/15/2034	1.C FE	
..55951P-BA-4	MAGNETITE CLO LTD SERIES 12-7A CLASS A1R2 6.376% 01/15/28		01/16/2024	Paydown		636,256	636,256	631,421	631,747	0	4,509	0	4,509	636,256	0	0	0	10,497	01/15/2028	1.A FE	
..55951P-BA-4	MAGNETITE CLO LTD SERIES 12-7A CLASS A1R2 6.376% 01/15/28		02/22/2024	Redemption 100.0000		1,371,225	1,371,225	1,360,803	1,361,507	0	9,718	0	9,718	1,371,225	0	0	0	31,608	01/15/2028	1.A FE	
..55953U-AC-8	MAGNETITE CLO LTD SERIES 21-30A CLASS B 7.187% 10/25/34		03/04/2024	DEUTSCHE BANK		1,500,750	1,500,000	1,500,000	1,500,000	0	0	0	0	1,500,000	0	750	750	40,031	10/25/2034	1.C FE	
..58013M-FJ-8	MCDONALDS CORP SR UNSECURED 2.625% 09/01/29		02/08/2024	Citigroup Global Markets Inc		901,560	1,000,000	992,640	995,595	0	93	0	93	995,688	0	(94,128)	(94,128)	11,740	09/01/2029	2.A FE	
..599191-AA-1	MILEAGE PLUS HLDINGS LLC 1ST LIEN 6.500% 06/20/27		03/20/2024	Redemption 100.0000		50,000	50,000	50,250	0	0	(250)	0	(250)	50,000	0	0	0	0	06/20/2027	2.C FE	
..626717-AM-4	MURPHY OIL CORP SR UNSECURED 5.875% 12/01/27		01/12/2024	PRESSPRICH		319,395	321,000	309,765	310,333	0	98	0	98	310,431	0	8,964	8,964	2,410	12/01/2027	3.A FE	
..641062-AR-5	NESTLE HOLDINGS INC SR UNSECURED 0.625% 01/15/26		03/06/2024	Stifel Nicolaus & Co.		924,510	1,000,000	994,830	997,999	0	181	0	181	998,180	0	(73,670)	(73,670)	4,045	01/15/2026	1.D FE	
..67080P-AE-6	NYACK PARK CLO LTD SERIES 21-1A CLASS B1 7.180% 10/20/34		02/09/2024	WACHOVIA		999,680	1,000,000	1,000,000	1,000,000	0	0	0	0	1,000,000	0	(320)	(320)	23,391	10/20/2034	1.C FE	
..67098M-AN-1	OAK HILL CREDIT PARTNERS CLO SERIES 20-7A CLASS AR 6.610% 02/24/37		01/25/2024	DEUTSCHE BANK		2,001,818	2,000,000	2,000,000	2,000,000	0	0	0	0	1,999,998	0	1,822	1,822	37,900	02/24/2037	1.A FE	
..67575X-AN-1	OCTAGON INVESTMENT PARTNERS 31 SERIES 17-1A CLASS AR 6.629% 07/20/30		01/22/2024	Paydown		146,698	146,698	145,451	145,290	0	1,407	0	1,407	146,698	0	0	0	2,577	07/20/2030	1.A FE	
..67575X-AN-1	OCTAGON INVESTMENT PARTNERS 31 SERIES 17-1A CLASS AR 6.629% 07/20/30		03/12/2024	Redemption 100.0000		1,466,603	1,466,603	1,454,137	1,452,532	0	14,071	0	14,071	1,466,603	0	0	0	39,266	07/20/2030	1.A FE	
..77341G-AN-0	ROCKFORD TOWER CLO LTD SERIES 19-2A CLASS CR 7.576% 08/20/32		02/09/2024	DEUTSCHE BANK		997,800	1,000,000	1,000,000	1,000,000	0	0	0	0	1,000,000	0	(2,200)	(2,200)	18,012	08/20/2032	1.F FE	
..893647-BE-6	TRANSIGM INC SECURED 6.250% 03/15/26		03/28/2024	Call 100.0000		500,000	500,000	500,260	499,406	556	38	0	594	500,000	0	0	0	16,753	03/15/2026	4.A FE	
..962178-AN-9	WEYERHAEUSER REAL ESTATE SR UNSECURED 5.875% 06/15/24		02/20/2024	MarketAxess		349,475	350,000	351,706	350,086	0	(78)	0	(78)	350,007	0	(532)	(532)	3,827	06/15/2024	3.B FE	
110999999. Subtotal - Bonds - Industrial and Miscellaneous (Unaffiliated)						23,935,993	24,177,685	24,290,962	23,660,594	556	28,516	0	29,072	0	24,239,913	0	(173,918)	(173,918)	349,313	XXX	XXX
250999997. Total - Bonds - Part 4						32,796,105	33,031,755	33,585,988	32,677,807	2,478	23,249	0	25,727	0	33,253,781	0	(327,676)	(327,676)	514,347	XXX	XXX

E05.1

STATEMENT AS OF MARCH 31, 2024 OF THE Coventry Health Care of Missouri, Inc.

SCHEDULE D - PART 4

Show All Long-Term Bonds and Stock Sold, Redeemed or Otherwise Disposed of During the Current Quarter

1	2	3	4	5	6	7	8	9	10	Change In Book/Adjusted Carrying Value					16	17	18	19	20	21	22
										11	12	13	14	15							
CUSIP Identification	Description	For-foreign	Disposal Date	Name of Purchaser	Number of Shares of Stock	Consideration	Par Value	Actual Cost	Prior Year Book/Adjusted Carrying Value	Unrealized Valuation Increase/(Decrease)	Current Year's (Amortization)/Accretion	Current Year's Other Than Temporary Impairment Recognized	Total Change in Book/Adjusted Carrying Value (11 + 12 - 13)	Total Foreign Exchange Change in Book /Adjusted Carrying Value	Book/Adjusted Carrying Value at Disposal Date	Foreign Exchange Gain (Loss) on Disposal	Realized Gain (Loss) on Disposal	Total Gain (Loss) on Disposal	Bond Interest/Stock Dividends Received During Year	Stated Contractual Maturity Date	NAIC Designation, NAIC Designation Modifier and SVO Administrative Symbol
2509999998. Total - Bonds - Part 5						XXX	XXX	XXX	XXX	XXX	XXX	XXX	XXX	XXX	XXX	XXX	XXX	XXX	XXX	XXX	XXX
2509999999. Total - Bonds						32,796,105	33,031,755	33,585,988	32,677,807	2,478	23,249	0	25,727	0	33,253,781	0	(327,676)	(327,676)	514,347	XXX	XXX
4509999997. Total - Preferred Stocks - Part 4						0	XXX	0	0	0	0	0	0	0	0	0	0	0	0	XXX	XXX
4509999998. Total - Preferred Stocks - Part 5						XXX	XXX	XXX	XXX	XXX	XXX	XXX	XXX	XXX	XXX	XXX	XXX	XXX	XXX	XXX	XXX
4509999999. Total - Preferred Stocks						0	XXX	0	0	0	0	0	0	0	0	0	0	0	0	XXX	XXX
5989999997. Total - Common Stocks - Part 4						0	XXX	0	0	0	0	0	0	0	0	0	0	0	0	XXX	XXX
5989999998. Total - Common Stocks - Part 5						XXX	XXX	XXX	XXX	XXX	XXX	XXX	XXX	XXX	XXX	XXX	XXX	XXX	XXX	XXX	XXX
5989999999. Total - Common Stocks						0	XXX	0	0	0	0	0	0	0	0	0	0	0	0	XXX	XXX
5999999999. Total - Preferred and Common Stocks						0	XXX	0	0	0	0	0	0	0	0	0	0	0	0	XXX	XXX
6009999999 - Totals						32,796,105	XXX	33,585,988	32,677,807	2,478	23,249	0	25,727	0	33,253,781	0	(327,676)	(327,676)	514,347	XXX	XXX

Schedule DB - Part A - Section 1 - Options, Caps, Floors, Collars, Swaps and Forwards Open

N O N E

Schedule DB - Part B - Section 1 - Futures Contracts Open

N O N E

Schedule DB - Part B - Section 1B - Brokers with whom cash deposits have been made

N O N E

Schedule DB - Part D - Section 1 - Counterparty Exposure for Derivative Instruments Open

N O N E

Schedule DB - Part D-Section 2 - Collateral for Derivative Instruments Open - Pledged By

N O N E

Schedule DB - Part D-Section 2 - Collateral for Derivative Instruments Open - Pledged To

N O N E

Schedule DB - Part E - Derivatives Hedging Variable Annuity Guarantees

N O N E

Schedule DL - Part 1 - Reinvested Collateral Assets Owned

N O N E

Schedule DL - Part 2 - Reinvested Collateral Assets Owned

N O N E

STATEMENT AS OF MARCH 31, 2024 OF THE Coventry Health Care of Missouri, Inc.

SCHEDULE E - PART 2 - CASH EQUIVALENTS

Show Investments Owned End of Current Quarter

1	2	3	4	5	6	7	8	9
CUSIP	Description	Code	Date Acquired	Rate of Interest	Maturity Date	Book/Adjusted Carrying Value	Amount of Interest Due and Accrued	Amount Received During Year
0109999999	Total - U.S. Government Bonds					0	0	0
0309999999	Total - All Other Government Bonds					0	0	0
0509999999	Total - U.S. States, Territories and Possessions Bonds					0	0	0
0709999999	Total - U.S. Political Subdivisions Bonds					0	0	0
0909999999	Total - U.S. Special Revenues Bonds					0	0	0
	BALTIMORE GAS & ELEC CO CP 3(a)3		03/13/2024	5.480	04/04/2024	4,033,152	0	11,665
	DOMINION RESOURCES INC CP 4-2		03/07/2024	5.580	04/15/2024	3,264,872	0	12,651
	DOVER CORP CP 4(2) 144A		03/22/2024	5.450	04/01/2024	2,507,000	0	3,795
	EDISON INTL INC. CP 4(2) 144A		03/25/2024	5.500	04/01/2024	6,000,000	0	6,417
	EXPERIAN FINANCE PLC CP 4(2) 144A		03/08/2024	5.480	04/15/2024	5,840,481	0	21,337
	GENERAL MOTORS FINL CO CP 4(2) 144A		03/18/2024	5.550	04/08/2024	1,124,782	0	2,428
	HP INC CP 4(2) 144A		03/13/2024	5.520	04/12/2024	6,032,778	0	17,575
	MICROCHIP TECHNOLOGY INC CP 4(2) 144A		03/08/2024	5.520	04/12/2024	4,991,536	0	18,369
	OGE ENERGY CORPORATION CP 4(2) 144A		03/21/2024	5.650	04/15/2024	8,159,999	0	14,087
	PHILLIPS 66 CP 4(2) 144A		03/20/2024	5.570	04/10/2024	4,993,025	0	9,270
	PUB SVC COLORADO CP 4(2) 144A		03/28/2024	5.450	04/04/2024	6,271,149	0	3,798
	SEMPRA ENERGY CP 4(2) 144A		03/25/2024	5.500	04/08/2024	6,261,290	0	6,696
	SPIRE INC CP 4(2) 144A		03/27/2024	5.490	04/17/2024	7,576,454	0	5,777
	STANLEY WORKS CP 4(2) 144A		03/20/2024	5.900	04/02/2024	4,999,179	0	9,832
1019999999	Subtotal - Bonds - Industrial and Miscellaneous (Unaffiliated) - Issuer Obligations					72,055,697	0	143,697
1109999999	Total - Industrial and Miscellaneous (Unaffiliated) Bonds					72,055,697	0	143,697
1309999999	Total - Hybrid Securities					0	0	0
1509999999	Total - Parent, Subsidiaries and Affiliates Bonds					0	0	0
1909999999	Subtotal - Unaffiliated Bank Loans					0	0	0
2419999999	Total - Issuer Obligations					72,055,697	0	143,697
2429999999	Total - Residential Mortgage-Backed Securities					0	0	0
2439999999	Total - Commercial Mortgage-Backed Securities					0	0	0
2449999999	Total - Other Loan-Backed and Structured Securities					0	0	0
2459999999	Total - SVO Identified Funds					0	0	0
2469999999	Total - Affiliated Bank Loans					0	0	0
2479999999	Total - Unaffiliated Bank Loans					0	0	0
2509999999	Total Bonds					72,055,697	0	143,697
60934N-50-0	FEDERATED INVESTORS INC TREASURY OBLIGATION FUND		03/28/2024	0.000		709	11	12
8209999999	Subtotal - Exempt Money Market Mutual Funds - as Identified by the SVO					709	11	12
8609999999	Total Cash Equivalents					72,056,406	11	143,709

E14