



# QUARTERLY STATEMENT

AS OF SEPTEMBER 30, 2025  
OF THE CONDITION AND AFFAIRS OF THE

## CareSource Arkansas Health Plan Co.

NAIC Group Code 03683 (Current Period) , 03683 (Prior Period) NAIC Company Code 17271 Employer's ID Number 84-4476729

Organized under the Laws of Arkansas , State of Domicile or Port of Entry Arkansas

Country of Domicile United States

Licensed as business type: Life, Accident & Health [ ] Property/Casualty [ ] Hospital, Medical & Dental Service or Indemnity [ ]  
 Dental Service Corporation [ ] Vision Service Corporation [ ] Health Maintenance Organization [ X ]  
 Other [ ] Is HMO Federally Qualified? Yes [ ] No [ X ]

Incorporated/Organized 01/28/2020 Commenced Business 03/25/2022

Statutory Home Office 425 West Capitol Ave., Suite 3000 , Little Rock, AR, US 72201  
(Street and Number) (City or Town, State, Country and Zip Code)

Main Administrative Office 230 N. Main St , Dayton, OH, US 45402 937-224-3300  
(Street and Number) (City or Town, State, Country and Zip Code) (Area Code) (Telephone Number)

Mail Address 230 N. Main St. , Dayton, OH, US 45402  
(Street and Number or P.O. Box) (City or Town, State, Country and Zip Code)

Primary Location of Books and Records 230 N. Main St. , Dayton, OH, US 45402 937-224-3300  
(Street and Number) (City or Town, State, Country and Zip Code) (Area Code) (Telephone Number)

Internet Web Site Address www.caresource.com

Statutory Statement Contact Rachel Ainslie 517-331-3100  
(Name) (Area Code) (Telephone Number) (Extension)  
Rachel.Ainslie@caresource.com 937-487-1744  
(E-Mail Address) (FAX Number)

### OFFICERS

Name	Title	Name	Title
<u>David M. Donohue</u>	<u>President</u>	<u>Lawrence R. Smart</u>	<u>Chief Financial Officer/Treasurer</u>
<u>Edward L. Stubbers</u>	<u>Secretary</u>	<u>Stephanie A. Williams</u>	<u>Assistant Treasurer</u>

### OTHER OFFICERS

\_\_\_\_\_

### DIRECTORS OR TRUSTEES

Scott R. Markovich Lawrence R. Smart Edward L. Stubbers

State of Ohio

County of Montgomery

ss

The officers of this reporting entity being duly sworn, each depose and say that they are the described officers of said reporting entity, and that on the reporting period stated above, all of the herein described assets were the absolute property of the said reporting entity, free and clear from any liens or claims thereon, except as herein stated, and that this statement, together with related exhibits, schedules and explanations therein contained, annexed or referred to, is a full and true statement of all the assets and liabilities and of the condition and affairs of the said reporting entity as of the reporting period stated above, and of its income and deductions therefrom for the period ended, and have been completed in accordance with the NAIC *Annual Statement Instructions and Accounting Practices and Procedures* manual except to the extent that: (1) state law may differ; or, (2) that state rules or regulations require differences in reporting not related to accounting practices and procedures, according to the best of their information, knowledge and belief, respectively. Furthermore, the scope of this attestation by the described officers also includes the related corresponding electronic filing with the NAIC, when required, that is an exact copy (except for formatting differences due to electronic filing) of the enclosed statement. The electronic filing may be requested by various regulators in lieu of or in addition to the enclosed statement.

Stephanie A. Williams  
Assistant Treasurer

Lawrence R. Smart  
Chief Financial Officer/Treasurer

a. Is this an original filing? Yes [ X ] No [ ]

- b. If no:
1. State the amendment number \_\_\_\_\_
  2. Date filed \_\_\_\_\_
  3. Number of pages attached \_\_\_\_\_

Subscribed and sworn to before me this \_\_\_\_\_ day of \_\_\_\_\_

\_\_\_\_\_

STATEMENT AS OF SEPTEMBER 30, 2025 OF THE CareSource Arkansas Health Plan Co.

**ASSETS**

	Current Statement Date			4 December 31 Prior Year Net Admitted Assets
	1 Assets	2 Nonadmitted Assets	3 Net Admitted Assets (Cols. 1 - 2)	
1. Bonds .....	110,925		110,925	124,390
2. Stocks:				
2.1 Preferred stocks .....			0	0
2.2 Common stocks .....			0	0
3. Mortgage loans on real estate:				
3.1 First liens .....			0	0
3.2 Other than first liens .....			0	0
4. Real estate:				
4.1 Properties occupied by the company (less \$ ..... encumbrances) .....			0	0
4.2 Properties held for the production of income (less \$ ..... encumbrances) .....			0	0
4.3 Properties held for sale (less \$ ..... encumbrances) .....			0	0
5. Cash (\$ ..... 1,569,558 ), cash equivalents (\$ ..... 0 ) and short-term investments (\$ ..... 0 ) .....	1,569,558		1,569,558	1,516,449
6. Contract loans (including \$ ..... premium notes) .....			0	0
7. Derivatives .....	0		0	0
8. Other invested assets .....	0		0	0
9. Receivables for securities .....			0	0
10. Securities lending reinvested collateral assets .....			0	0
11. Aggregate write-ins for invested assets .....	0	0	0	0
12. Subtotals, cash and invested assets (Lines 1 to 11) .....	1,680,483	0	1,680,483	1,640,840
13. Title plants less \$ ..... charged off (for Title insurers only) .....			0	0
14. Investment income due and accrued .....	1,870		1,870	316
15. Premiums and considerations:				
15.1 Uncollected premiums and agents' balances in the course of collection .....			0	0
15.2 Deferred premiums, agents' balances and installments booked but deferred and not yet due (including \$ ..... earned but unbilled premiums) .....			0	0
15.3 Accrued retrospective premiums (\$ ..... ) and contracts subject to redetermination (\$ ..... ) .....			0	0
16. Reinsurance:				
16.1 Amounts recoverable from reinsurers .....			0	0
16.2 Funds held by or deposited with reinsured companies .....			0	0
16.3 Other amounts receivable under reinsurance contracts .....			0	0
17. Amounts receivable relating to uninsured plans .....			0	0
18.1 Current federal and foreign income tax recoverable and interest thereon .....	8,171		8,171	8,171
18.2 Net deferred tax asset .....			0	0
19. Guaranty funds receivable or on deposit .....			0	0
20. Electronic data processing equipment and software .....			0	0
21. Furniture and equipment, including health care delivery assets (\$ ..... ) .....			0	0
22. Net adjustment in assets and liabilities due to foreign exchange rates .....			0	0
23. Receivables from parent, subsidiaries and affiliates .....			0	0
24. Health care (\$ ..... ) and other amounts receivable .....			0	0
25. Aggregate write-ins for other-than-invested assets .....	0	0	0	0
26. Total assets excluding Separate Accounts, Segregated Accounts and Protected Cell Accounts (Lines 12 to 25) .....	1,690,524	0	1,690,524	1,649,327
27. From Separate Accounts, Segregated Accounts and Protected Cell Accounts .....			0	0
28. Total (Lines 26 and 27) .....	1,690,524	0	1,690,524	1,649,327
<b>DETAILS OF WRITE-INS</b>				
1101. ....				
1102. ....				
1103. ....				
1198. Summary of remaining write-ins for Line 11 from overflow page .....	0	0	0	0
1199. Totals (Lines 1101 through 1103 plus 1198) (Line 11 above) .....	0	0	0	0
2501. ....				
2502. ....				
2503. ....				
2598. Summary of remaining write-ins for Line 25 from overflow page .....	0	0	0	0
2599. Totals (Lines 2501 through 2503 plus 2598) (Line 25 above) .....	0	0	0	0

## LIABILITIES, CAPITAL AND SURPLUS

	Current Period			Prior Year
	1 Covered	2 Uncovered	3 Total	4 Total
1. Claims unpaid (less \$ ..... reinsurance ceded).....			0	0
2. Accrued medical incentive pool and bonus amounts .....			0	0
3. Unpaid claims adjustment expenses .....			0	0
4. Aggregate health policy reserves including the liability of \$ ..... for medical loss ratio rebate per the Public Health Service Act.....			0	0
5. Aggregate life policy reserves .....			0	0
6. Property/casualty unearned premium reserve .....			0	0
7. Aggregate health claim reserves .....			0	0
8. Premiums received in advance .....			0	0
9. General expenses due or accrued .....			0	0
10.1 Current federal and foreign income tax payable and interest thereon (including \$ ..... on realized gains (losses)) .....			0	0
10.2 Net deferred tax liability.....			0	0
11. Ceded reinsurance premiums payable .....			0	0
12. Amounts withheld or retained for the account of others .....			0	0
13. Remittances and items not allocated .....			0	0
14. Borrowed money (including \$ ..... current) and interest thereon \$ ..... (including \$ ..... current) .....			0	0
15. Amounts due to parent, subsidiaries and affiliates .....	155		155	0
16. Derivatives.....			0	0
17. Payable for securities .....			0	0
18. Payable for securities lending .....			0	0
19. Funds held under reinsurance treaties (with \$ ..... authorized reinsurers, \$ ..... unauthorized reinsurers and \$ ..... certified reinsurers).....			0	0
20. Reinsurance in unauthorized and certified (\$ ..... ) companies .....			0	0
21. Net adjustments in assets and liabilities due to foreign exchange rates .....			0	0
22. Liability for amounts held under uninsured plans .....			0	0
23. Aggregate write-ins for other liabilities (including \$ ..... current) .....	0	0	0	0
24. Total liabilities (Lines 1 to 23).....	155	0	155	0
25. Aggregate write-ins for special surplus funds .....	XXX	XXX	0	0
26. Common capital stock .....	XXX	XXX		0
27. Preferred capital stock .....	XXX	XXX		0
28. Gross paid in and contributed surplus .....	XXX	XXX	760,000	760,000
29. Surplus notes .....	XXX	XXX	750,000	750,000
30. Aggregate write-ins for other-than-special surplus funds .....	XXX	XXX	0	0
31. Unassigned funds (surplus) .....	XXX	XXX	180,369	139,327
32. Less treasury stock, at cost:				
32.1 ..... shares common (value included in Line 26 \$ ..... ) .....	XXX	XXX		0
32.2 ..... shares preferred (value included in Line 27 \$ ..... ) .....	XXX	XXX		0
33. Total capital and surplus (Lines 25 to 31 minus Line 32) .....	XXX	XXX	1,690,369	1,649,327
34. Total liabilities, capital and surplus (Lines 24 and 33) .....	XXX	XXX	1,690,524	1,649,327
<b>DETAILS OF WRITE-INS</b>				
2301. ....				
2302. ....				
2303. ....				
2398. Summary of remaining write-ins for Line 23 from overflow page .....	0	0	0	0
2399. Totals (Lines 2301 through 2303 plus 2398) (Line 23 above) .....	0	0	0	0
2501. ....	XXX	XXX		0
2502. ....	XXX	XXX		0
2503. ....	XXX	XXX		0
2598. Summary of remaining write-ins for Line 25 from overflow page .....	XXX	XXX	0	0
2599. Totals (Lines 2501 through 2503 plus 2598) (Line 25 above) .....	XXX	XXX	0	0
3001. ....	XXX	XXX		0
3002. ....	XXX	XXX		0
3003. ....	XXX	XXX		0
3098. Summary of remaining write-ins for Line 30 from overflow page .....	XXX	XXX	0	0
3099. Totals (Lines 3001 through 3003 plus 3098) (Line 30 above) .....	XXX	XXX	0	0

## STATEMENT OF REVENUE AND EXPENSES

	Current Year To Date		Prior Year To Date	Prior Year Ended December 31
	1 Uncovered	2 Total	3 Total	4 Total
1. Member Months.....	XXX		0	0
2. Net premium income (including \$ ..... non-health premium income).....	XXX		0	0
3. Change in unearned premium reserves and reserve for rate credits .....	XXX		0	0
4. Fee-for-service (net of \$ ..... medical expenses) .....	XXX		0	0
5. Risk revenue .....	XXX		0	0
6. Aggregate write-ins for other health care related revenues .....	XXX	0	0	0
7. Aggregate write-ins for other non-health revenues .....	XXX	0	0	0
8. Total revenues (Lines 2 to 7) .....	XXX	0	0	0
<b>Hospital and Medical:</b>				
9. Hospital/medical benefits .....			0	0
10. Other professional services .....			0	0
11. Outside referrals .....			0	0
12. Emergency room and out-of-area .....			0	0
13. Prescription drugs .....			0	0
14. Aggregate write-ins for other hospital and medical.....	0	0	0	0
15. Incentive pool, withhold adjustments and bonus amounts.....			0	0
16. Subtotal (Lines 9 to 15) .....	0	0	0	0
<b>Less:</b>				
17. Net reinsurance recoveries .....			0	0
18. Total hospital and medical (Lines 16 minus 17) .....	0	0	0	0
19. Non-health claims (net).....			0	0
20. Claims adjustment expenses, including \$ ..... cost containment expenses.....			0	0
21. General administrative expenses.....		598	436	450
22. Increase in reserves for life and accident and health contracts (including \$ ..... increase in reserves for life only) .....			0	0
23. Total underwriting deductions (Lines 18 through 22) .....	0	598	436	450
24. Net underwriting gain or (loss) (Lines 8 minus 23) .....	XXX	(598)	(436)	(450)
25. Net investment income earned .....		41,640	55,205	72,229
26. Net realized capital gains (losses) less capital gains tax of \$ .....			0	0
27. Net investment gains (losses) (Lines 25 plus 26) .....	0	41,640	55,205	72,229
28. Net gain or (loss) from agents' or premium balances charged off [(amount recovered \$ ..... ) (amount charged off \$ ..... )] .....			0	0
29. Aggregate write-ins for other income or expenses .....	0	0	0	0
30. Net income or (loss) after capital gains tax and before all other federal income taxes (Lines 24 plus 27 plus 28 plus 29) .....	XXX	41,042	54,769	71,779
31. Federal and foreign income taxes incurred .....	XXX		0	29
32. Net income (loss) (Lines 30 minus 31) .....	XXX	41,042	54,769	71,750
<b>DETAILS OF WRITE-INS</b>				
0601. ....	XXX			
0602. ....	XXX			
0603. ....	XXX			
0698. Summary of remaining write-ins for Line 6 from overflow page .....	XXX	0	0	0
0699. Totals (Lines 0601 through 0603 plus 0698) (Line 6 above) .....	XXX	0	0	0
0701. ....	XXX			
0702. ....	XXX			
0703. ....	XXX			
0798. Summary of remaining write-ins for Line 7 from overflow page .....	XXX	0	0	0
0799. Totals (Lines 0701 through 0703 plus 0798) (Line 7 above) .....	XXX	0	0	0
1401. ....				
1402. ....				
1403. ....				
1498. Summary of remaining write-ins for Line 14 from overflow page .....	0	0	0	0
1499. Totals (Lines 1401 through 1403 plus 1498) (Line 14 above) .....	0	0	0	0
2901. ....				
2902. ....				
2903. ....				
2998. Summary of remaining write-ins for Line 29 from overflow page .....	0	0	0	0
2999. Totals (Lines 2901 through 2903 plus 2998) (Line 29 above) .....	0	0	0	0

**STATEMENT OF REVENUE AND EXPENSES (Continued)**

	1	2	3
	Current Year To Date	Prior Year To Date	Prior Year Ended December 31
<b>CAPITAL &amp; SURPLUS ACCOUNT</b>			
33. Capital and surplus prior reporting year.....	1,649,327	1,577,577	1,577,577
34. Net income or (loss) from Line 32 .....	41,042	54,769	71,750
35. Change in valuation basis of aggregate policy and claim reserves .....		0	0
36. Change in net unrealized capital gains (losses) less capital gains tax of \$ .....		0	0
37. Change in net unrealized foreign exchange capital gain or (loss) .....		0	0
38. Change in net deferred income tax .....	(18,348)	2,037	2,478
39. Change in nonadmitted assets .....	18,348	(2,037)	(2,478)
40. Change in unauthorized and certified reinsurance .....	0	0	0
41. Change in treasury stock .....	0	0	0
42. Change in surplus notes .....	0	0	0
43. Cumulative effect of changes in accounting principles .....		0	0
44. Capital Changes:			
44.1 Paid in .....		0	0
44.2 Transferred from surplus (Stock Dividend) .....		0	0
44.3 Transferred to surplus .....		0	0
45. Surplus adjustments:			
45.1 Paid in .....	0	0	0
45.2 Transferred to capital (Stock Dividend) .....	0	0	0
45.3 Transferred from capital .....		0	0
46. Dividends to stockholders .....		0	0
47. Aggregate write-ins for gains or (losses) in surplus .....	0	0	0
48. Net change in capital and surplus (Lines 34 to 47) .....	41,042	54,769	71,750
49. Capital and surplus end of reporting period (Line 33 plus 48)	1,690,369	1,632,347	1,649,327
<b>DETAILS OF WRITE-INS</b>			
4701. ....			
4702. ....			
4703. ....			
4798. Summary of remaining write-ins for Line 47 from overflow page .....	0	0	0
4799. Totals (Lines 4701 through 4703 plus 4798) (Line 47 above)	0	0	0

## CASH FLOW

	1 Current Year To Date	2 Prior Year To Date	3 Prior Year Ended December 31
<b>Cash from Operations</b>			
1. Premiums collected net of reinsurance.....	0	0	0
2. Net investment income .....	39,660	53,241	70,786
3. Miscellaneous income .....	0	0	0
4. Total (Lines 1 to 3) .....	39,660	53,241	70,786
5. Benefit and loss related payments .....	0	0	0
6. Net transfers to Separate Accounts, Segregated Accounts and Protected Cell Accounts.....	0	0	0
7. Commissions, expenses paid and aggregate write-ins for deductions .....	598	436	450
8. Dividends paid to policyholders .....	0	0	0
9. Federal and foreign income taxes paid (recovered) net of \$ ..... tax on capital gains (losses).....	0	0	0
10. Total (Lines 5 through 9) .....	598	436	450
11. Net cash from operations (Line 4 minus Line 10) .....	39,063	52,805	70,336
<b>Cash from Investments</b>			
12. Proceeds from investments sold, matured or repaid:			
12.1 Bonds .....	125,000	0	0
12.2 Stocks .....	0	0	0
12.3 Mortgage loans .....	0	0	0
12.4 Real estate .....	0	0	0
12.5 Other invested assets .....	0	0	0
12.6 Net gains or (losses) on cash, cash equivalents and short-term investments .....	0	0	0
12.7 Miscellaneous proceeds .....	0	0	0
12.8 Total investment proceeds (Lines 12.1 to 12.7) .....	125,000	0	0
13. Cost of investments acquired (long-term only):			
13.1 Bonds .....	111,109	0	0
13.2 Stocks .....	0	0	0
13.3 Mortgage loans .....	0	0	0
13.4 Real estate .....	0	0	0
13.5 Other invested assets .....	0	0	0
13.6 Miscellaneous applications .....	0	0	0
13.7 Total investments acquired (Lines 13.1 to 13.6) .....	111,109	0	0
14. Net increase/(decrease) in contract loans and premium notes .....	0	0	0
15. Net cash from investments (Line 12.8 minus Line 13.7 and Line 14) .....	13,891	0	0
<b>Cash from Financing and Miscellaneous Sources</b>			
16. Cash provided (applied):			
16.1 Surplus notes, capital notes .....	0	0	0
16.2 Capital and paid in surplus, less treasury stock.....	0	0	0
16.3 Borrowed funds .....	0	0	0
16.4 Net deposits on deposit-type contracts and other insurance liabilities .....	0	0	0
16.5 Dividends to stockholders .....	0	0	0
16.6 Other cash provided (applied).....	155	0	0
17. Net cash from financing and miscellaneous sources (Line 16.1 through Line 16.4 minus Line 16.5 plus Line 16.6).....	155	0	0
<b>RECONCILIATION OF CASH, CASH EQUIVALENTS AND SHORT-TERM INVESTMENTS</b>			
18. Net change in cash, cash equivalents and short-term investments (Line 11, plus Lines 15 and 17) .....	53,109	52,805	70,336
19. Cash, cash equivalents and short-term investments:			
19.1 Beginning of year.....	1,516,449	1,446,112	1,446,112
19.2 End of period (Line 18 plus Line 19.1) .....	1,569,558	1,498,917	1,516,449

Prem., Enrollment

**NONE**

Claims Unpaid

**NONE**

Underwriting and Investment Exhibit

**NONE**

# STATEMENT AS OF SEPTEMBER 30, 2025 OF THE CareSource Arkansas Health Plan Co.

## NOTES TO FINANCIAL STATEMENTS

### 1. Summary of Significant Accounting Policies and Going Concern

#### A. Accounting Practices

The financial statements of CareSource Arkansas Health Plan Co. (the "Company"), domiciled in the State of Arkansas, are presented on the basis of accounting practices prescribed or permitted by the Arkansas Insurance Department (AID).

The Department recognizes only statutory accounting practices prescribed or permitted by the State of Arkansas for determining and reporting the financial condition, results of operations, and cash flow of an insurance company for determining its solvency under Arkansas insurance law. The National Association of Insurance Commissioners' ("NAIC") Accounting Practices and Procedures manual, ("NAIC AP&P") has been adopted as a component of prescribed or permitted practices by the State of Arkansas.

A reconciliation of the Company's net income and capital and surplus between NAIC AP&P and practices prescribed and permitted by the State of Arkansas is shown below:

	SSAP #	F/S Page	F/S Line #	2025	2024
<b>NET INCOME</b>					
(1) Company state basis (Page 4, Line 32, Columns 2 & 4)	XXX	XXX	XXX	\$ 41,042	\$ 71,750
(2) State Prescribed Practices that are an increase/(decrease) from NAIC SAP:					
(3) State Permitted Practices that are an increase/(decrease) from NAIC SAP:					
(4) NAIC SAP (1-2-3=4)	XXX	XXX	XXX	\$ 41,042	\$ 71,750
<b>SURPLUS</b>					
(5) Company state basis (Page 3, Line 33, Columns 3 & 4)	XXX	XXX	XXX	\$ 1,690,369	\$ 1,649,327
(6) State Prescribed Practices that are an increase/(decrease) from NAIC SAP:					
(7) State Permitted Practices that are an increase/(decrease) from NAIC SAP:					
(8) NAIC SAP (5-6-7=8)	XXX	XXX	XXX	\$ 1,690,369	\$ 1,649,327

#### B. Use of Estimates in the Preparation of the Financial Statements

None

#### C. Accounting Policy

(2) Not Applicable

(6) Not Applicable

#### D. Going Concern

Management has evaluated the company's abilities to continue as a going concern. There is no substantial doubt about its ability to continue as a going concern.

### 2. Accounting Changes and Corrections of Errors

Not Applicable

### 3. Business Combinations and Goodwill

Not Applicable

### 4. Discontinued Operations

Not Applicable

### 5. Investments

#### A. Mortgage Loans, including Mezzanine Real Estate Loans

Not Applicable

#### B. Debt Restructuring

Not Applicable

#### C. Reverse Mortgages

Not Applicable

#### D. Asset-Backed Securities

Not Applicable

#### E. Dollar Repurchase Agreements and/or Securities Lending Transactions

Not Applicable

#### F. Repurchase Agreements Transactions Accounted for as Secured Borrowing

Not Applicable

#### G. Reverse Repurchase Agreements Transactions Accounted for as Secured Borrowing

Not Applicable

#### H. Repurchase Agreements Transactions Accounted for as a Sale

Not Applicable

#### I. Reverse Repurchase Agreements Transactions Accounted for as a Sale

Not Applicable

#### J. Real Estate

Not Applicable

#### K. Investments in Tax Credit Structures (tax credit investments)

Not Applicable

#### L. Restricted Assets

No significant change

#### M. Working Capital Finance Investments

Not Applicable

#### N. Offsetting and Netting of Assets and Liabilities

Not Applicable

#### O. 5GI Securities

Not Applicable

#### P. Short Sales

Not Applicable

#### Q. Prepayment Penalty and Acceleration Fees

Not Applicable

#### R. Reporting Entity's Share of Cash Pool by Asset type.

Not Applicable

#### S. Aggregate Collateral Loans by Qualifying Investment Collateral

Not Applicable

### 6. Joint Ventures, Partnerships and Limited Liability Companies

Not Applicable

### 7. Investment Income

No significant change.

# STATEMENT AS OF SEPTEMBER 30, 2025 OF THE CareSource Arkansas Health Plan Co.

- 8. **Derivative Instruments**  
Not Applicable
- 9. **Income Taxes**  
No significant change.
- 10. **Information Concerning Parent, Subsidiaries, Affiliates and Other Related Parties**  
No significant change.
- 11. **Debt**  
Not Applicable
- 12. **Retirement Plans, Deferred Compensation, Postemployment Benefits and Compensated Absences and Other Postretirement Benefit Plans**  
Not Applicable
- 13. **Capital and Surplus, Dividend Restrictions and Quasi-Reorganizations**  
No significant change.
- 14. **Liabilities, Contingencies and Assessments**  
Not Applicable
- 15. **Leases**  
Not Applicable
- 16. **Information About Financial Instruments With Off-Balance-Sheet Risk And Financial Instruments With Concentrations of Credit Risk**  
Not Applicable
- 17. **Sale, Transfer and Servicing of Financial Assets and Extinguishments of Liabilities**  
Not Applicable
- 18. **Gain or Loss to the Reporting Entity from Uninsured Plans and the Uninsured Portion of Partially Insured Plans**  
Not Applicable
- 19. **Direct Premium Written/Produced by Managing General Agents/Third-Party Administrators**  
Not Applicable
- 20. **Fair Value Measurements**

A. Assets and Liabilities Measured at Fair Value

CSAR had cash of \$1,569,558 and \$1,516,449, respectively, as of September 30, 2025 and December 31, 2024.

- (1) Not Applicable
- (2) Not Applicable
- (3) CSAR recognizes transfers between fair value levels at the end of each reporting period
- (4) Level 2 securities – values determined through the use of third-party pricing services utilizing market observable inputs. CSAR does not have any investments with fair value measurements categorized within Level 2 as of September 30, 2025.
- (5) Not Applicable

B. Other Fair Value Disclosures

Not Applicable

C. Fair Value of Financial Instruments

Type of Financial Instrument	Aggregate Fair Value	Admitted Assets	(Level 1)	(Level 2)	(Level 3)	Net Asset Value (NAV)	Not Practicable (Carrying Value)
Issuer Credit Obligations ...	\$ 111,436	\$ 110,925	\$ .....	\$ 111,436	\$ .....	\$ .....	\$ .....
Cash .....	\$ 1,569,558	\$ 1,569,558	\$ 1,569,558	\$ .....	\$ .....	\$ .....	\$ .....

D. Not Practicable to Estimate Fair Value

Not Applicable

E. Investments Measured using the NAV as Practical Expedient

Not Applicable

- 21. **Other Items**  
Not Applicable
- 22. **Events Subsequent**  
No significant change.
- 23. **Reinsurance**  
Not Applicable
- 24. **Retrospectively Rated Contracts & Contracts Subject to Redetermination**  
Not Applicable
- 25. **Changes in Incurred Claims and Claim Adjustment Expenses**  
The company did not have any unpaid claims or claims adjustments expenses as of September 30, 2025, and December 31, 2024.
- 26. **Intercompany Pooling Arrangements**  
Not Applicable
- 27. **Structured Settlements**  
Health Entities should not complete this Note.
- 28. **Health Care Receivables**  
Not Applicable
- 29. **Participating Policies**  
Not Applicable
- 30. **Premium Deficiency Reserves**  
Not Applicable
- 31. **Anticipated Salvage and Subrogation**  
Not Applicable

# GENERAL INTERROGATORIES

## PART 1 - COMMON INTERROGATORIES

### GENERAL

- 1.1 Did the reporting entity experience any material transactions requiring the filing of Disclosure of Material Transactions with the State of Domicile, as required by the Model Act? ..... Yes  No
- 1.2 If yes, has the report been filed with the domiciliary state? ..... Yes  No
- 2.1 Has any change been made during the year of this statement in the charter, by-laws, articles of incorporation, or deed of settlement of the reporting entity? ..... Yes  No
- 2.2 If yes, date of change: .....
- 3.1 Is the reporting entity a member of an Insurance Holding Company System consisting of two or more affiliated persons, one or more of which is an insurer? ..... Yes  No   
If yes, complete Schedule Y, Parts 1 and 1A.
- 3.2 Have there been any substantial changes in the organizational chart since the prior quarter end? ..... Yes  No
- 3.3 If the response to 3.2 is yes, provide a brief description of those changes.  
ElderServe Health is a new entity to the holding company system.....
- 3.4 Is the reporting entity publicly traded or a member of a publicly traded group? ..... Yes  No
- 3.5 If the response to 3.4 is yes, provide the CIK (Central Index Key) code issued by the SEC for the entity/group.....
- 4.1 Has the reporting entity been a party to a merger or consolidation during the period covered by this statement? ..... Yes  No
- 4.2 If yes, provide the name of entity, NAIC Company Code, and state of domicile (use two letter state abbreviation) for any entity that has ceased to exist as a result of the merger or consolidation.

1 Name of Entity	2 NAIC Company Code	3 State of Domicile

- 5. If the reporting entity is subject to a management agreement, including third-party administrator(s), managing general agent(s), attorney-in-fact, or similar agreement, have there been any significant changes regarding the terms of the agreement or principals involved? ..... Yes  No  NA   
If yes, attach an explanation.
- 6.1 State as of what date the latest financial examination of the reporting entity was made or is being made. ....12/31/9999
- 6.2 State the as of date that the latest financial examination report became available from either the state of domicile or the reporting entity. This date should be the date of the examined balance sheet and not the date the report was completed or released. ....12/31/9999
- 6.3 State as of what date the latest financial examination report became available to other states or the public from either the state of domicile or the reporting entity. This is the release date or completion date of the examination report and not the date of the examination (balance sheet date). ....12/31/9999
- 6.4 By what department or departments?  
Arkansas Insurance Department.....
- 6.5 Have all financial statement adjustments within the latest financial examination report been accounted for in a subsequent financial statement filed with Departments? ..... Yes  No  NA
- 6.6 Have all of the recommendations within the latest financial examination report been complied with? ..... Yes  No  NA
- 7.1 Has this reporting entity had any Certificates of Authority, licenses or registrations (including corporate registration, if applicable) suspended or revoked by any governmental entity during the reporting period? ..... Yes  No
- 7.2 If yes, give full information: .....
- 8.1 Is the company a subsidiary of a bank holding company regulated by the Federal Reserve Board?..... Yes  No
- 8.2 If response to 8.1 is yes, please identify the name of the bank holding company. ....
- 8.3 Is the company affiliated with one or more banks, thrifts or securities firms?..... Yes  No
- 8.4 If response to 8.3 is yes, please provide below the names and location (city and state of the main office) of any affiliates regulated by a federal regulatory services agency [i.e. the Federal Reserve Board (FRB), the Office of the Comptroller of the Currency (OCC), the Federal Deposit Insurance Corporation (FDIC) and the Securities Exchange Commission (SEC)] and identify the affiliate's primary federal regulator.]

1 Affiliate Name	2 Location (City, State)	3 FRB	4 OCC	5 FDIC	6 SEC

- 9.1 Are the senior officers (principal executive officer, principal financial officer, principal accounting officer or controller, or persons performing similar functions) of the reporting entity subject to a code of ethics, which includes the following standards? ..... Yes  No   
(a) Honest and ethical conduct, including the ethical handling of actual or apparent conflicts of interest between personal and professional relationships;  
(b) Full, fair, accurate, timely and understandable disclosure in the periodic reports required to be filed by the reporting entity;  
(c) Compliance with applicable governmental laws, rules and regulations;  
(d) The prompt internal reporting of violations to an appropriate person or persons identified in the code; and  
(e) Accountability for adherence to the code.
- 9.11 If the response to 9.1 is No, please explain: .....
- 9.2 Has the code of ethics for senior managers been amended? ..... Yes  No
- 9.21 If the response to 9.2 is Yes, provide information related to amendment(s).  
Additional language added on Responsible Use of Artificial Intelligence (AI).....
- 9.3 Have any provisions of the code of ethics been waived for any of the specified officers? ..... Yes  No
- 9.31 If the response to 9.3 is Yes, provide the nature of any waiver(s). .....

### FINANCIAL

- 10.1 Does the reporting entity report any amounts due from parent, subsidiaries or affiliates on Page 2 of this statement?..... Yes  No
- 10.2 If yes, indicate any amounts receivable from parent included in the Page 2 amount:..... \$ .....

# GENERAL INTERROGATORIES

## INVESTMENT

11.1 Were any of the stocks, bonds, or other assets of the reporting entity loaned, placed under option agreement, or otherwise made available for use by another person? (Exclude securities under securities lending agreements.) ..... Yes  No

11.2 If yes, give full and complete information relating thereto:  
.....

12. Amount of real estate and mortgages held in other invested assets in Schedule BA: ..... \$ .....0

13. Amount of real estate and mortgages held in short-term investments: ..... \$ .....0

14.1 Does the reporting entity have any investments in parent, subsidiaries and affiliates? ..... Yes  No

14.2 If yes, please complete the following:

	1 Prior Year-End Book/Adjusted Carrying Value	2 Current Quarter Book/Adjusted Carrying Value
14.21 Bonds .....	\$ .....0	\$ .....0
14.22 Preferred Stock .....	\$ .....0	\$ .....0
14.23 Common Stock .....	\$ .....0	\$ .....0
14.24 Short-Term Investments .....	\$ .....0	\$ .....0
14.25 Mortgage Loans on Real Estate .....	\$ .....0	\$ .....0
14.26 All Other .....	\$ .....0	\$ .....0
14.27 Total Investment in Parent, Subsidiaries and Affiliates (Subtotal Lines 14.21 to 14.26) .....	\$ .....0	\$ .....0
14.28 Total Investment in Parent included in Lines 14.21 to 14.26 above .....	\$ .....0	\$ .....0

15.1 Has the reporting entity entered into any hedging transactions reported on Schedule DB? ..... Yes  No

15.2 If yes, has a comprehensive description of the hedging program been made available to the domiciliary state? ..... Yes  No  NA   
If no, attach a description with this statement.

16. For the reporting entity's security lending program, state the amount of the following as of the current statement date:

16.1 Total fair value of reinvested collateral assets reported on Schedule DL, Parts 1 and 2	\$ .....0
16.2 Total book/adjusted carrying value of reinvested collateral assets reported on Schedule DL, Parts 1 and 2	\$ .....0
16.3 Total payable for securities lending reported on the liability page	\$ .....0

17. Excluding items in Schedule E – Part 3 – Special Deposits, real estate, mortgage loans and investments held physically in the reporting entity's offices, vaults or safety deposit boxes, were all stocks, bonds and other securities, owned throughout the current year held pursuant to a custodial agreement with a qualified bank or trust company in accordance with Section 1, III – General Examination Considerations, F. Outsourcing of Critical Functions, Custodial or Safekeeping Agreements of the NAIC *Financial Condition Examiners Handbook*? ..... Yes  No

17.1 For all agreements that comply with the requirements of the NAIC *Financial Condition Examiners Handbook*, complete the following:

1 Name of Custodian(s)	2 Custodian Address
Regions Bank.....	250 Riverchase Parkway Birmingham, AL 35244.....

17.2 For all agreements that do not comply with the requirements of the NAIC *Financial Condition Examiners Handbook*, provide the name, location and a complete explanation:

1 Name(s)	2 Location(s)	3 Complete Explanation(s)

17.3 Have there been any changes, including name changes, in the custodian(s) identified in 17.1 during the current quarter? ..... Yes  No

17.4 If yes, give full and complete information relating thereto:

1 Old Custodian	2 New Custodian	3 Date of Change	4 Reason

17.5 Investment management – Identify all investment advisors, investment managers, broker/dealers, including individuals that have the authority to make investment decisions on behalf of the reporting entity. This includes both primary and sub-advisors. For assets that are managed internally by employees of the reporting entity, note as such. [...that have access to the investment accounts"; "...handle securities"]

1 Name of Firm or Individual	2 Affiliation
Just in Bell.....	I.....
Jared Hillenbrand.....	I.....

17.5097 For those firms/individuals listed in the table for Question 17.5, do any firms/individuals unaffiliated with the reporting entity (i.e., designated with a "U") manage more than 10% of the reporting entity's invested assets? ..... Yes  No

17.5098 For firms/individuals unaffiliated with the reporting entity (i.e., designated with a "U") listed in the table for Question 17.5, does the total assets under management aggregate to more than 50% of the reporting entity's invested assets? ..... Yes  No

17.6 For those firms or individuals listed in the table for 17.5 with an affiliation code of "A" (affiliated) or "U" (unaffiliated), provide the information for the table below.

1 Central Registration Depository Number	2 Name of Firm or Individual	3 Legal Entity Identifier (LEI)	4 Registered With	5 Investment Management Agreement (IMA) Filed

18.1 Have all the filing requirements of the *Purposes and Procedures Manual of the NAIC Investment Analysis Office* been followed? ..... Yes  No

18.2 If no, list exceptions:  
.....

19. By self-designating 5GI securities, the reporting entity is certifying the following elements for each self-designated 5GI security:

- Documentation necessary to permit a full credit analysis of the security does not exist or an NAIC CRP credit rating for an FE or PL security is not available.
- Issuer or obligor is current on all contracted interest and principal payments.
- The insurer has an actual expectation of ultimate payment of all contracted interest and principal.

Has the reporting entity self-designated 5GI securities? ..... Yes  No

20. By self-designating PLGI securities, the reporting entity is certifying its compliance with the requirements as specified in the *Purposes and Procedures Manual of the NAIC Investment Analysis Office* (P&P Manual) for private letter rating (PLR) securities and the following elements of each self-designated PLGI security:

- The security was either:
  - issued prior to January 1, 2018 (which is exempt from PLR filing requirements pursuant to the P&P Manual), or

## GENERAL INTERROGATORIES

- ii. issued from January 1, 2018 to December 31, 2021 and subject to a confidentiality agreement executed prior to January 1, 2022 which confidentiality agreement remains in force, for which an insurance company cannot provide a copy of a private letter rating rationale report to the SVO due to confidentiality or other contractual reasons ("waived submission PLR securities").
- b. The reporting entity is holding capital commensurate with the NAIC Designation and NAIC Designation Category reported for the security.
- c. The NAIC Designation and NAIC Designation Category were derived from the credit rating assigned by an NAIC CRP in its legal capacity as an NRSRO which is shown on a current private letter rating, dated during the financial statement year, held by the insurer and available for examination by state insurance regulators.
- d. Other than for waived submission PLR securities, defined above, on or after January 1, 2024 for any PLR securities issued on or after January 1, 2022, if the reporting entity is not permitted to share this private credit rating or the private rating letter rationale report of the PL security with the SVO, it certifies that it is reporting it as an NAIC 5.B GI and may not assign any other self-designation.

Has the reporting entity self-designated PLGI to securities, all of which meet the above requirement and as specified in the P&P Manual?....

Yes [ ] No [X]

21. By assigning FE to a Schedule BA non-registered private fund, the reporting entity is certifying the following elements of each self-designated FE fund:
- a. The shares were purchased prior to January 1, 2019.
  - b. The reporting entity is holding capital commensurate with the NAIC Designation reported for the security.
  - c. The security had a public credit rating(s) with annual surveillance assigned by an NAIC CRP in its legal capacity as an NRSRO prior to January 1, 2019.
  - d. The fund only or predominantly holds bonds in its portfolio.
  - e. The current reported NAIC Designation was derived from the public credit rating(s) with annual surveillance assigned by an NAIC CRP in its legal capacity as an NRSRO.
  - f. The public credit rating(s) with annual surveillance assigned by an NAIC CRP has not lapsed.

Has the reporting entity assigned FE to Schedule BA non-registered private funds that complied with the above criteria?.....

Yes [ ] No [X]

## GENERAL INTERROGATORIES

### PART 2 - HEALTH

1. Operating Percentages:
- 1.1 A&H loss percent..... 0.0 %
- 1.2 A&H cost containment percent ..... 0.0 %
- 1.3 A&H expense percent excluding cost containment expenses..... 0.0 %
- 2.1 Do you act as a custodian for health savings accounts?..... Yes [ ] No [X]
- 2.2 If yes, please provide the amount of custodial funds held as of the reporting date..... \$ \_\_\_\_\_
- 2.3 Do you act as an administrator for health savings accounts?..... Yes [ ] No [X]
- 2.4 If yes, please provide the balance of the funds administered as of the reporting date..... \$ \_\_\_\_\_
3. Is the reporting entity licensed or chartered, registered, qualified, eligible or writing business in at least two states?..... Yes [ ] No [X]
- 3.1 If no, does the reporting entity assume reinsurance business that covers risks residing in at least one state other than the state of domicile of the reporting entity?..... Yes [ ] No [X]

**SCHEDULE S - CEDED REINSURANCE**

Showing All New Reinsurance Treaties - Current Year to Date

1 NAIC Company Code	2 ID Number	3 Effective Date	4 Name of Reinsurer	5 Domiciliary Jurisdiction	6 Type of Reinsurance Ceded	7 Type of Business Ceded	8 Type of Reinsurer	9 Certified Reinsurer Rating (1 through 6)	10 Effective Date of Certified Reinsurer Rating
<b>NONE</b>									

**SCHEDULE T - PREMIUMS AND OTHER CONSIDERATIONS**

Current Year to Date - Allocated by States and Territories

States, Etc.	1 Active Status (a)	Direct Business Only								10 Deposit-Type Contracts	
		2 Accident & Health Premiums	3 Medicare Title XVIII	4 Medicaid Title XIX	5 CHIP Title XXI	6 Federal Employees Health Benefits Plan Premiums	7 Life & Annuity Premiums & Other Considerations	8 Property/Casualty Premiums	9 Total Columns 2 Through 8		
1. Alabama	AL	N								.0	
2. Alaska	AK	N								.0	
3. Arizona	AZ	N								.0	
4. Arkansas	AR	L								.0	
5. California	CA	N								.0	
6. Colorado	CO	N								.0	
7. Connecticut	CT	N								.0	
8. Delaware	DE	N								.0	
9. Dist. Columbia	DC	N								.0	
10. Florida	FL	N								.0	
11. Georgia	GA	N								.0	
12. Hawaii	HI	N								.0	
13. Idaho	ID	N								.0	
14. Illinois	IL	N								.0	
15. Indiana	IN	N								.0	
16. Iowa	IA	N								.0	
17. Kansas	KS	N								.0	
18. Kentucky	KY	N								.0	
19. Louisiana	LA	N								.0	
20. Maine	ME	N								.0	
21. Maryland	MD	N								.0	
22. Massachusetts	MA	N								.0	
23. Michigan	MI	N								.0	
24. Minnesota	MN	N								.0	
25. Mississippi	MS	N								.0	
26. Missouri	MO	N								.0	
27. Montana	MT	N								.0	
28. Nebraska	NE	N								.0	
29. Nevada	NV	N								.0	
30. New Hampshire	NH	N								.0	
31. New Jersey	NJ	N								.0	
32. New Mexico	NM	N								.0	
33. New York	NY	N								.0	
34. North Carolina	NC	N								.0	
35. North Dakota	ND	N								.0	
36. Ohio	OH	N								.0	
37. Oklahoma	OK	N								.0	
38. Oregon	OR	N								.0	
39. Pennsylvania	PA	N								.0	
40. Rhode Island	RI	N								.0	
41. South Carolina	SC	N								.0	
42. South Dakota	SD	N								.0	
43. Tennessee	TN	N								.0	
44. Texas	TX	N								.0	
45. Utah	UT	N								.0	
46. Vermont	VT	N								.0	
47. Virginia	VA	N								.0	
48. Washington	WA	N								.0	
49. West Virginia	WV	N								.0	
50. Wisconsin	WI	N								.0	
51. Wyoming	WY	N								.0	
52. American Samoa	AS	N								.0	
53. Guam	GU	N								.0	
54. Puerto Rico	PR	N								.0	
55. U.S. Virgin Islands	VI	N								.0	
56. Northern Mariana Islands	MP	N								.0	
57. Canada	CAN	N								.0	
58. Aggregate other alien	OT	XXX	.0	.0	.0	.0	.0	.0	.0	.0	.0
59. Subtotal		XXX	.0	.0	.0	.0	.0	.0	.0	.0	.0
60. Reporting entity contributions for Employee Benefit Plans		XXX								.0	
61. Total (Direct Business)		XXX	0	0	0	0	0	0	0	0	0
<b>DETAILS OF WRITE-INS</b>											
58001.		XXX									
58002.		XXX									
58003.		XXX									
58998. Summary of remaining write-ins for Line 58 from overflow page		XXX	.0	.0	.0	.0	.0	.0	.0	.0	.0
58999. Totals (Lines 58001 through 58003 plus 58998) (Line 58 above)		XXX	0	0	0	0	0	0	0	0	0

(a) Active Status Counts

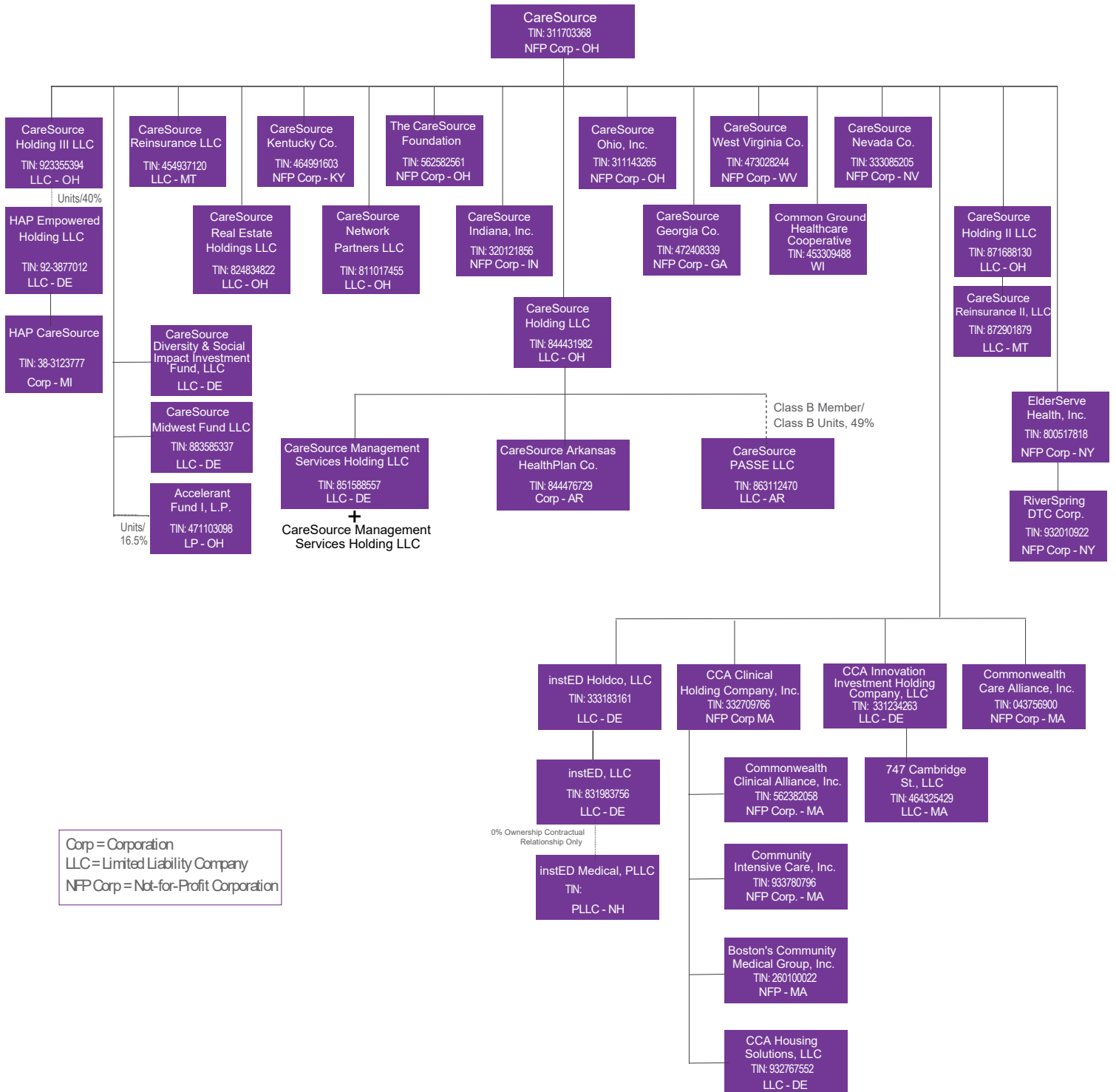
- 1. L – Licensed or Chartered – Licensed insurance carrier or domiciled RRG .....1
- 2. R – Registered – Non-domiciled RRGs .....0
- 3. E – Eligible – Reporting entities eligible or approved to write surplus lines in the state .....0
- 4. Q – Qualified – Qualified or accredited reinsurer .....0
- 5. N – None of the above – Not allowed to write business in the state .....56

STATEMENT AS OF September 30, 2025 OF THE CareSource Arkansas Health Plan  
Co.

SCHEDULE Y - INFORMATION CONCERNING ACTIVITIES OF INSURER  
MEMBERS OF A HOLDING COMPANY GROUP  
PART 1 - ORGANIZATIONAL CHART

# CareSource Organization Chart

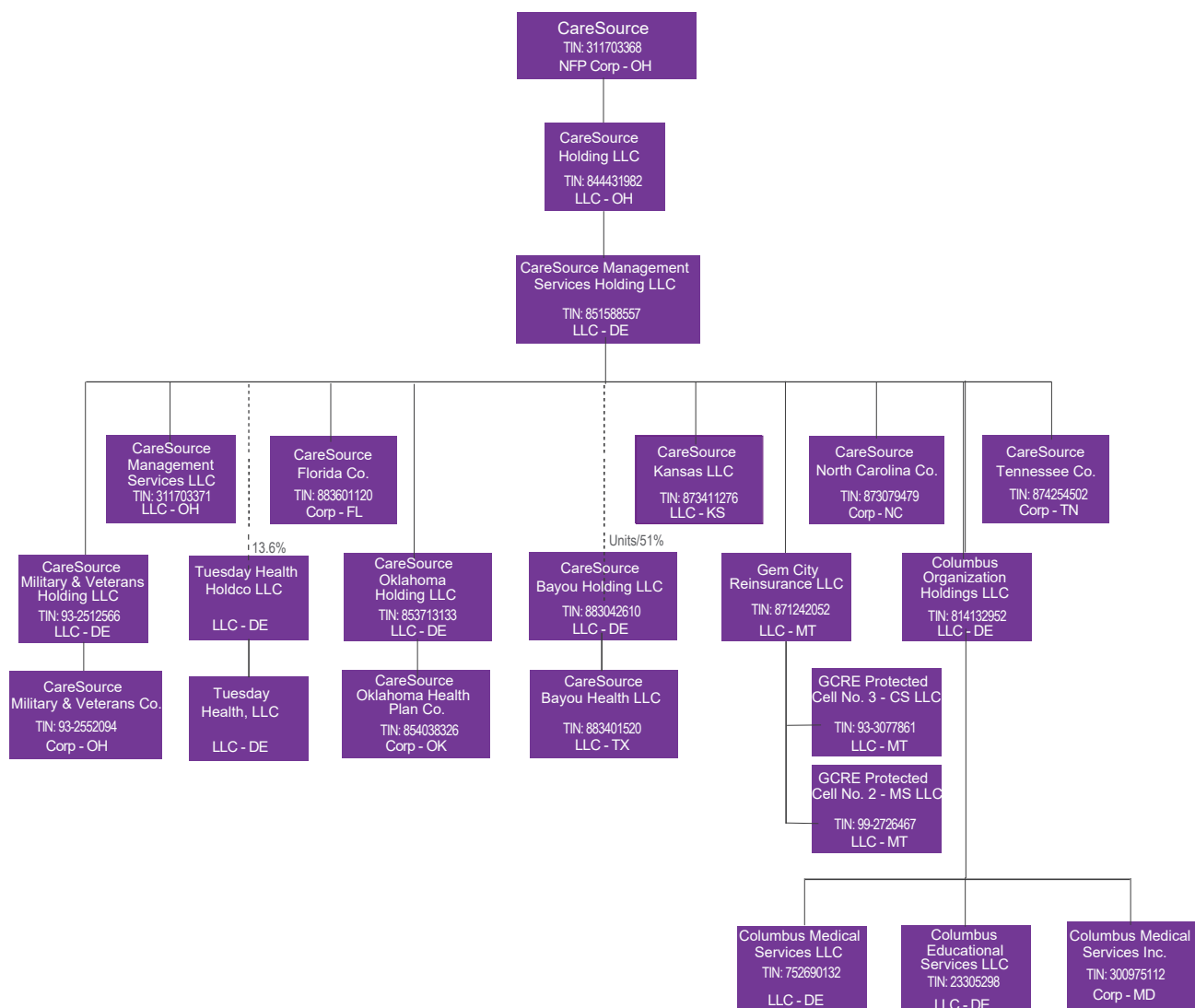
Ownership is 100% unless otherwise indicated.



Confidential & Proprietary

## CareSource Organization Chart

Ownership is 100% unless otherwise indicated.



Corp = Corporation  
 LLC = Limited Liability Company  
 NFP Corp = Not-for-Profit Corporation

Confidential & Proprietary

STATEMENT AS OF SEPTEMBER 30, 2025 OF THE CareSource Arkansas Health Plan Co.

**SCHEDULE Y**  
**PART 1A – DETAILS OF INSURANCE HOLDING COMPANY SYSTEM**

1	2	3	4	5	6	7	8	9	10	11	12	13	14	15	16
Group Code	Group Name	NAIC Company Code	ID Number	Federal RSSD	CIK	Name of Securities Exchange if Publicly Traded (U.S. or International)	Names of Parent, Subsidiaries or Affiliates	Domiciliary Location	Relationship to Reporting Entity	Directly Controlled by (Name of Entity/Person)	Type of Control (Ownership, Board, Management, Attorney-in-Fact, Influence, Other)	If Control is Ownership Provide Percentage	Ultimate Controlling Entity(ies)/Person(s)	Is an SCA Filing Required? (Yes/No)	*
00000	CareSource	00000	84-4431982				CareSource Holding LLC	OH	UDP	CareSource	Ownership	100.0	CareSource	NO	.0
03683	CareSource	17271	84-4476729				CareSource Arkansas Health Plan Co.	AR	RE	CareSource Holding LLC	Ownership	100.0	CareSource	NO	.0
00000	CareSource	00000	56-2582561				The CareSource Foundation	OH	NIA	CareSource	Board of Trustees	.0.0	CareSource	NO	.0
03683	CareSource	10142	32-0121856				CareSource Indiana, Inc.	IN	IA	CareSource	Board of Directors	.0.0	CareSource	NO	.0
00000	CareSource	00000	31-1703371				CareSource Management Services LLC	OH	NIA	CareSource Management Services Holding LLC	Ownership	100.0	CareSource	NO	.0
00000	CareSource	00000	31-1703368				CareSource	OH	DIP	CareSource	Board of Directors	.0.0	CareSource	NO	.0
03683	CareSource	95201	31-1143265				CareSource Ohio Inc.	OH	IA	CareSource	Board of Directors	.0.0	CareSource	NO	.0
03683	CareSource	15479	46-4991603				CareSource Kentucky Co.	KY	IA	CareSource	Board of Directors	.0.0	CareSource	NO	.0
03683	CareSource	15710	47-2408339				CareSource Georgia Co.	GA	IA	CareSource	Board of Directors	.0.0	CareSource	NO	.0
03683	CareSource	15728	47-3028244				CareSource West Virginia Co.	WV	IA	CareSource	Board of Directors	.0.0	CareSource	NO	.0
03683	CareSource	00000	45-4937120				CareSource Reinsurance, LLC	MT	IA	CareSource	Board of Managing Directors	.0.0	CareSource	NO	.0
00000	CareSource	00000	81-1017455				CareSource Network Partners LLC	OH	NIA	CareSource	Board of Directors	.0.0	CareSource	NO	.0
03683	CareSource	17096	86-3112470				CareSource PASSE LLC	AR	IA	CareSource Holding LLC	Ownership	49.0	CareSource	NO	.0
00000	CareSource	00000	82-4834822				CareSource Real Estate Holdings LLC	OH	NIA	CareSource	Board of Directors	.0.0	CareSource	NO	.0
00000	CareSource	00000	85-1588557				CareSource Management Services Holding LLC	DE	NIA	CareSource Holding LLC	Ownership	100.0	CareSource	NO	.0
00000	CareSource	00000	85-3713133				CareSource Oklahoma Holding LLC	DE	NIA	CareSource Management Services Holding LLC	Ownership	100.0	CareSource	NO	.0
03683	CareSource	17023	85-4038326				CareSource Oklahoma Health Plan Co.	OK	IA	CareSource Oklahoma Holding LLC	Ownership	100.0	CareSource	NO	.0
00000	CareSource	00000	87-1242052				Gem City Reinsurance LLC	MT	IA	CareSource Management Services Holding LLC	Ownership	100.0	CareSource	NO	.0
00000	CareSource	00000	87-1688130				CareSource Holding II LLC	OH	NIA	CareSource	Ownership	100.0	CareSource	NO	.0
00000	CareSource	00000	87-2901879				CareSource Reinsurance II, LLC	MT	IA	CareSource Holding II LLC	Ownership	100.0	CareSource	NO	.0
03683	CareSource	17366	87-3079479				CareSource North Carolina Co.	NC	IA	CareSource Management Services Holding LLC	Ownership	100.0	CareSource	NO	.0
03683	CareSource	17467	87-4254502				CareSource Tennessee Co.	TN	IA	CareSource Management Services Holding LLC	Ownership	100.0	CareSource	NO	.0
03683	CareSource	17379	87-3411276				CareSource Kansas LLC	KS	IA	CareSource Management Services Holding LLC	Ownership	100.0	CareSource	NO	.0
00000	CareSource	00000	81-4132952				Columbus Organization Holdings LLC	DE	NIA	CareSource Management Services Holding LLC	Ownership	100.0	CareSource	NO	.0
00000	CareSource	00000	75-2690132				Columbus Medical Services LLC	DE	NIA	Columbus Organization Holdings LLC	Ownership	100.0	CareSource	NO	.0

STATEMENT AS OF SEPTEMBER 30, 2025 OF THE CareSource Arkansas Health Plan Co.

**SCHEDULE Y**  
**PART 1A – DETAILS OF INSURANCE HOLDING COMPANY SYSTEM**

1	2	3	4	5	6	7	8	9	10	11	12	13	14	15	16
Group Code	Group Name	NAIC Company Code	ID Number	Federal RSSD	CIK	Name of Securities Exchange if Publicly Traded (U.S. or International)	Names of Parent, Subsidiaries or Affiliates	Domiciliary Location	Relationship to Reporting Entity	Directly Controlled by (Name of Entity/Person)	Type of Control (Ownership, Board, Management, Attorney-in-Fact, Influence, Other)	If Control is Ownership Provide Percentage	Ultimate Controlling Entity(ies)/Person(s)	Is an SCA Filing Required? (Yes/No)	*
00000	CareSource	00000	02-3305298				Columbus Educational Services LLC	DE	NIA	Columbus Organization Holdings LLC	Ownership	100.0	CareSource	NO	.0
00000	CareSource	00000	30-0975112				Columbus Medical Services Inc	MD	NIA	Columbus Organization Holdings LLC	Ownership	100.0	CareSource	NO	.0
00000	CareSource	00000	88-3042610				CareSource Bayou Holding LLC	DE	NIA	CareSource Management Services Holding LLC	Ownership	51.0	CareSource	NO	.0
03683	CareSource	17449	88-3401520				CareSource Bayou Health LLC	TX	IA	CareSource Bayou Holding LLC	Ownership	100.0	CareSource	NO	.0
03683	CareSource	17455	88-3601120				CareSource Florida Co	FL	IA	CareSource Management Services Holding LLC	Ownership	100.0	CareSource	NO	.0
00000	CareSource	00000	92-3355394				CareSource Holding III LLC	OH	NIA	CareSource	Ownership	100.0	CareSource	NO	.0
00000	CareSource	00000	93-2512566				CareSource Military & Veterans Holding LLC	DE	NIA	CareSource Management Services Holding LLC	Ownership	100.0	CareSource	NO	.0
03683	CareSource	17802	93-2552094				CareSource Military & Veterans Co	OH	NIA	CareSource Military & Veterans Holding LLC	Ownership	100.0	CareSource	NO	.0
00000	CareSource	00000	92-3877012				HAP Empowered Holding LLC	DE	NIA	CareSource Holding III LLC	Ownership	40.0	CareSource	NO	.0
03683	CareSource	95814	38-3123777				HAP CareSource	MI	IA	HAP Empowered Holding LLC	Ownership	100.0	CareSource	NO	.0
03683	CareSource	00000	93-3077861				GCRE Protected Cell No. 3 - CS LLC	MT	IA	Gem City Reinsurance LLC	Ownership	100.0	CareSource	NO	.0
03683	CareSource	00000	99-2726467				GCRE Protected Cell No. 2 - MS LLC	MT	IA	Gem City Reinsurance LLC	Ownership	100.0	CareSource	NO	.0
00000	CareSource	00000	93-2022078				Tuesday Health Holdco., LLC	DE	NIA	CareSource Management Services Holding LLC	Ownership	13.6	CareSource	NO	.0
00000	CareSource	00000	92-2653278				Tuesday Health, LLC	DE	NIA	Tuesday Health Holdco., LLC	Ownership	100.0	CareSource	NO	.0
00000	CareSource	00000	87-1811106				Caresource Diversity & Social Impact Investment Fund LLC	DE	NIA	CareSource	Ownership	100.0	CareSource	NO	.0
00000	CareSource	00000	47-1103098				Accelerant Fund I, L.P	OH	NIA	CareSource	Ownership	16.5	CareSource	NO	.0
00000	CareSource	00000	88-3585337				Caresource Midwest Fund LLC	DE	NIA	CareSource	Ownership	100.0	CareSource	NO	.0
03683	CareSource	17781	33-3085205				CareSource Nevada Co	NV	IA	CareSource	Board of Directors	100.0	CareSource	NO	.0
03683	CareSource	15061	45-3309488				Common Ground Healthcare Cooperative	WI	IA	CareSource	Board of Directors	100.0	CareSource	NO	.0
00000	CareSource	00000	33-3183161				InstED Holdco, LLC	DE	NIA	CareSource	Board of Directors	100.0	CareSource	NO	.0
00000	CareSource	00000	83-1983756				InstED, LLC	DE	NIA	Instead Holdco, LLC	Ownership	100.0	CareSource	NO	.0
00000	CareSource	00000	33-2709766				CCA Clinical Holding Company, Inc	MA	NIA	CareSource	Board of Directors	100.0	CareSource	NO	.0
00000	CareSource	00000	56-2382058				Commonwealth Clinical Alliance, Inc	MA	NIA	CCA Clinical Holding Company, Inc	Ownership	100.0	CareSource	NO	.0
00000	CareSource	00000	93-3780796				Community Intensive Care, Inc	MA	NIA	CCA Clinical Holding Company, Inc	Ownership	100.0	CareSource	NO	.0
00000	CareSource	00000	26-0100022				Boston's Community Medical Group, Inc	MA	NIA	CCA Clinical Holding Company, Inc	Ownership	100.0	CareSource	NO	.0
00000	CareSource	00000	93-2767552				CCA Housing Solutions, LLC	DE	NIA	CCA Clinical Holding Company, Inc	Ownership	100.0	CareSource	NO	.0
00000	CareSource	00000	33-1234263				CCA Innovation Investment Holding Company, LLC	DE	NIA	CareSource	Board of Directors	100.0	CareSource	NO	.0
03683	CareSource	17767	04-3756900				Commonwealth Care Alliance, Inc	MA	IA	CareSource	Board of Directors	100.0	CareSource	NO	.0



# SUPPLEMENTAL EXHIBITS AND SCHEDULES INTERROGATORIES

The following supplemental reports are required to be filed as part of your statement filing. However, in the event that your company does not transact the type of business for which the special report must be filed, your response of **NO** to the specific interrogatory will be accepted in lieu of filing a "NONE" report and a bar code will be printed below. If the supplement is required of your company but is not being filed for whatever reason enter **SEE EXPLANATION** and provide an explanation following the interrogatory questions.

Response

1. Will the Medicare Part D Coverage Supplement be filed with the state of domicile and the NAIC with this statement?

.....NO.....

**AUGUST FILING**

2. Will the regulator-only (non-public) Communication of Internal Control Related Matters Noted in Audit be filed with the state of domicile and electronically with the NAIC (as a regulator-only non-public document) by August 1? The response for 1st and 3rd quarters should be N/A. A NO response resulting with a bar code is only appropriate in the 2nd quarter.

.....N/A.....

**Explanation:**

**Bar Code:**

1.   
1 7 2 7 1 2 0 2 5 3 6 5 0 0 0 0 3

**OVERFLOW PAGE FOR WRITE-INS**

---

**SCHEDULE A – VERIFICATION**

**Real Estate**

	1 Year To Date	2 Prior Year Ended December 31
1. Book/adjusted carrying value, December 31 of prior year .....	.0	.0
2. Cost of acquired:		
2.1 Actual cost at time of acquisition .....		.0
2.2 Additional investment made after acquisition .....		.0
3. Current year change in encumbrances .....		.0
4. Total gain (loss) on disposals .....		.0
5. Deduct amounts received on disposals .....		.0
6. Total foreign exchange change in book/adjusted carrying value .....		.0
7. Deduct current year's other-than-temporary impairment recognized .....		.0
8. Deduct current year's depreciation .....		.0
9. Book/adjusted carrying value at the end of current period (Lines 1+2+3+4-5+6-7-8) .....	.0	.0
10. Deduct total nonadmitted amounts .....	.0	.0
11. Statement value at end of current period (Line 9 minus Line 10)	0	0

NONE

**SCHEDULE B – VERIFICATION**

**Mortgage Loans**

	1 Year To Date	2 Prior Year Ended December 31
1. Book value/recorded investment excluding accrued interest, December 31 of prior year .....	.0	.0
2. Cost of acquired:		
2.1 Actual cost at time of acquisition .....		.0
2.2 Additional investment made after acquisition .....		.0
3. Capitalized deferred interest and other .....		.0
4. Accrual of discount .....		.0
5. Unrealized valuation increase/(decrease) .....		.0
6. Total gain (loss) on disposals .....		.0
7. Deduct amounts received on disposals .....		.0
8. Deduct amortization of premium and mortgage interest points and commitment fees .....		.0
9. Total foreign exchange change in book value/recorded investment excluding accrued interest .....		.0
10. Deduct current year's other-than-temporary impairment recognized .....		.0
11. Book value/recorded investment excluding accrued interest at end of current period (Lines 1+2+3+4+5+6-7-8+9-10) .....	.0	.0
12. Total valuation allowance .....		.0
13. Subtotal (Line 11 plus Line 12) .....	.0	.0
14. Deduct total nonadmitted amounts .....	.0	.0
15. Statement value at end of current period (Line 13 minus Line 14)	0	0

NONE

**SCHEDULE BA – VERIFICATION**

**Other Long-Term Invested Assets**

	1 Year To Date	2 Prior Year Ended December 31
1. Book/adjusted carrying value, December 31 of prior year .....	.0	.0
2. Cost of acquired:		
2.1 Actual cost at time of acquisition .....		.0
2.2 Additional investment made after acquisition .....		.0
3. Capitalized deferred interest and other .....		.0
4. Accrual of discount .....		.0
5. Unrealized valuation increase/(decrease) .....		.0
6. Total gain (loss) on disposals .....		.0
7. Deduct amounts received on disposals .....		.0
8. Deduct amortization of premium, depreciation and proportional amortization .....		.0
9. Total foreign exchange change in book/adjusted carrying value .....		.0
10. Deduct current year's other-than-temporary impairment recognized .....		.0
11. Book/adjusted carrying value at end of current period (Lines 1+2+3+4+5+6-7-8+9-10) .....	.0	.0
12. Deduct total nonadmitted amounts .....	.0	.0
13. Statement value at end of current period (Line 11 minus Line 12)	0	0

NONE

**SCHEDULE D – VERIFICATION**

**Bonds and Stocks**

	1 Year To Date	2 Prior Year Ended December 31
1. Book/adjusted carrying value of bonds and stocks, December 31 of prior year .....	124,392	122,951
2. Cost of bonds and stocks acquired .....	111,109	.0
3. Accrual of discount .....	.610	1,441
4. Unrealized valuation increase/(decrease) .....		.0
5. Total gain (loss) on disposals .....		.0
6. Deduct consideration for bonds and stocks disposed of .....	125,000	.0
7. Deduct amortization of premium .....	184	.0
8. Total foreign exchange change in book/adjusted carrying value .....		.0
9. Deduct current year's other-than-temporary impairment recognized .....		.0
10. Total investment income recognized as a result of prepayment penalties and/or acceleration fees .....		.0
11. Book/adjusted carrying value at end of current period (Lines 1+2+3+4+5-6-7+8-9+10) .....	110,926	124,392
12. Deduct total nonadmitted amounts .....	.0	.0
13. Statement value at end of current period (Line 11 minus Line 12)	110,926	124,392

**STATEMENT AS OF SEPTEMBER 30, 2025 OF THE CareSource Arkansas Health Plan Co.**

**SCHEDULE D - PART 1B**

Showing the Acquisitions, Dispositions and Non-Trading Activity  
During the Current Quarter for all Bonds and Preferred Stock by NAIC Designation

NAIC Designation	1 Book/Adjusted Carrying Value Beginning of Current Quarter	2 Acquisitions During Current Quarter	3 Dispositions During Current Quarter	4 Non-Trading Activity During Current Quarter	5 Book/Adjusted Carrying Value End of First Quarter	6 Book/Adjusted Carrying Value End of Second Quarter	7 Book/Adjusted Carrying Value End of Third Quarter	8 Book/Adjusted Carrying Value December 31 Prior Year
<b>ISSUER CREDIT OBLIGATIONS (ICO)</b>								
1. NAIC 1 (a).....	111,061			(137)	124,756	111,061	110,924	124,390
2. NAIC 2 (a).....	0				0	0	0	0
3. NAIC 3 (a).....	0				0	0	0	0
4. NAIC 4 (a).....	0				0	0	0	0
5. NAIC 5 (a).....	0				0	0	0	0
6. NAIC 6 (a).....	0				0	0	0	0
7. Total ICO	111,061	0	0	(137)	124,756	111,061	110,924	124,390
<b>ASSET-BACKED SECURITIES (ABS)</b>								
8. NAIC 1.....	0				0	0	0	0
9. NAIC 2.....	0				0	0	0	0
10. NAIC 3.....	0				0	0	0	0
11. NAIC 4.....	0				0	0	0	0
12. NAIC 5.....	0				0	0	0	0
13. NAIC 6.....	0				0	0	0	0
14. Total ABS.....	0	0	0	0	0	0	0	0
<b>PREFERRED STOCK</b>								
15. NAIC 1.....	0				0	0	0	0
16. NAIC 2.....	0				0	0	0	0
17. NAIC 3.....	0				0	0	0	0
18. NAIC 4.....	0				0	0	0	0
19. NAIC 5.....	0				0	0	0	0
20. NAIC 6.....	0				0	0	0	0
21. Total Preferred Stock.....	0	0	0	0	0	0	0	0
22. Total ICO, ABS & Preferred Stock	111,061	0	0	(137)	124,756	111,061	110,924	124,390

(a) Book/Adjusted Carrying Value column for the end of the current reporting period includes the following amount of short-term and cash equivalent bonds by NAIC designation: NAIC 1 \$ ..... ; NAIC 2 \$ ..... ; NAIC 3 \$ ..... ; NAIC 4 \$ ..... ; NAIC 5 \$ ..... ; NAIC 6 \$ .....

S102

Schedule DA - Part 1

**NONE**

Schedule DA - Verification

**NONE**

Schedule DB - Part A - Verification

**NONE**

Schedule DB - Part B - Verification

**NONE**

Schedule DB - Part C - Section 1

**NONE**

Schedule DB - Part C - Section 2

**NONE**

Schedule DB - Verification

**NONE**

Schedule E - Part 2 - Verification

**NONE**

Schedule A - Part 2

**NONE**

Schedule A - Part 3

**NONE**

Schedule B - Part 2

**NONE**

Schedule B - Part 3

**NONE**

Schedule BA - Part 2

**NONE**

Schedule BA - Part 3

**NONE**

Schedule D - Part 3

**NONE**

Schedule D - Part 4

**NONE**

Schedule DB - Part A - Section 1

**NONE**

Schedule DB - Part B - Section 1

**NONE**

Schedule DB - Part D - Section 1

**NONE**

Schedule DB - Part D - Section 2

**NONE**

Schedule DB - Part E

**NONE**

Schedule DL - Part 1

**NONE**

Schedule DL - Part 2

**NONE**



**SCHEDULE E - PART 2 - CASH EQUIVALENTS**

Show Investments Owned End of Current Quarter

1 CUSIP	2 Description	3 Restricted Asset Code	4 Date Acquired	5 Stated Rate of Interest	6 Maturity Date	7 Book/Adjusted Carrying Value	8 Amount of Interest Due & Accrued	9 Amount Received During Year
<b>NONE</b>								
8609999999 Total Cash Equivalents						0	0	0